



SonicWall CSE

Il SASE secondo SonicWall

14 Febbraio 2025

Webinar

Andrea Pezzoni – Security Presales Specialist – TD SYNnex

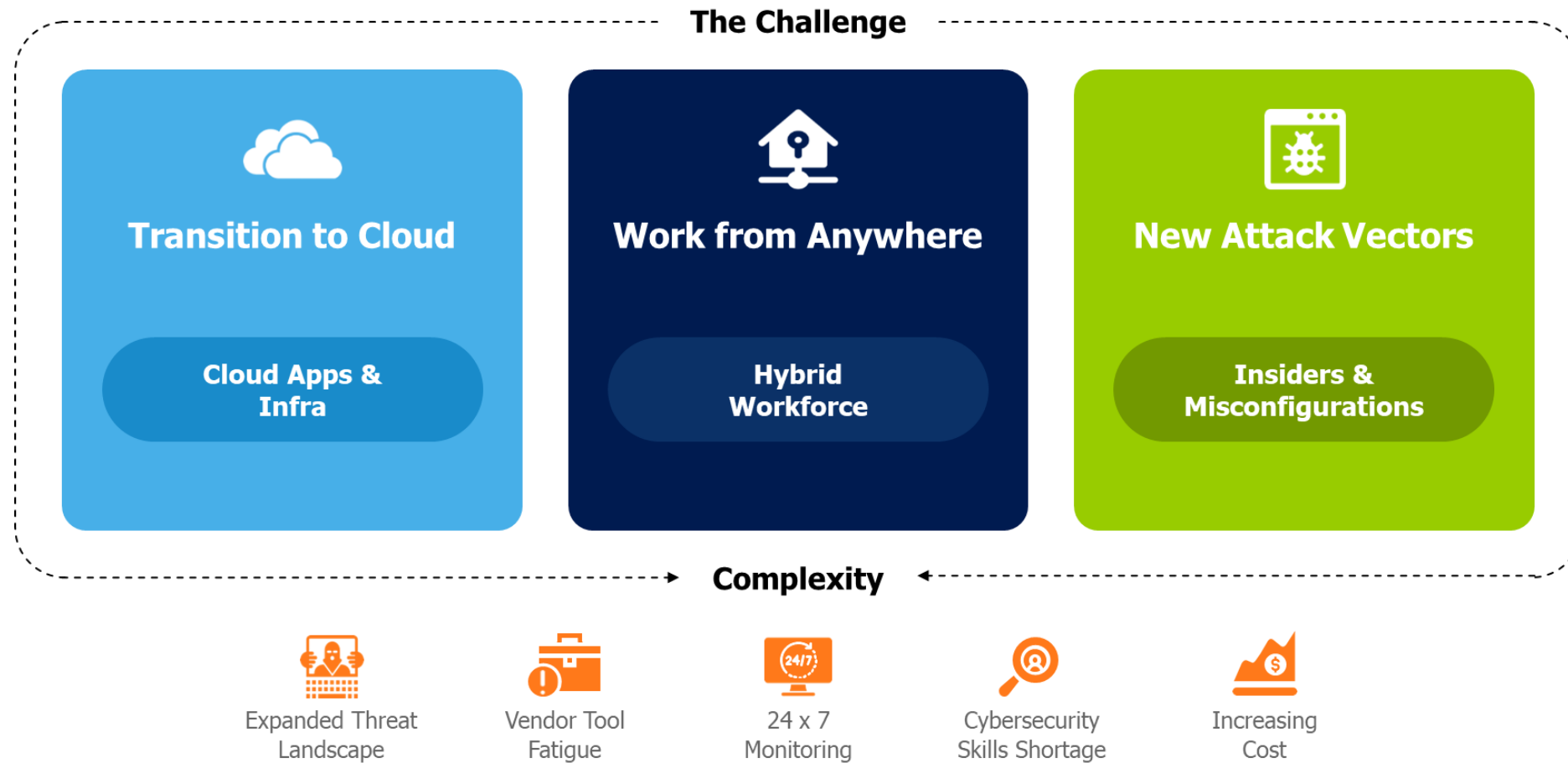
Federico Diamantini – System Engineer - SonicWall

SASE

Secure access service edge (SASE) offre funzionalità di rete convergente e sicurezza come servizio, tra cui SD-WAN, SWG, CASB, NGFW e accesso alla rete a fiducia zero (ZTNA).

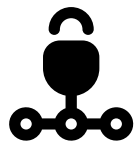
SASE supporta i casi d'uso di filiali, lavoratori remoti e accesso sicuro in sede. SASE viene fornito principalmente come servizio e consente un accesso zero trust basato sull'identità del dispositivo o dell'entità, unito a un contesto in tempo reale e a criteri di sicurezza e conformità.

La Sfida



Una singola piattaforma per la sicurezza

SonicPlatform



**Network &
Infra Security
(FW)**



**Security Service
Edge
(SSE / ZTNA)**



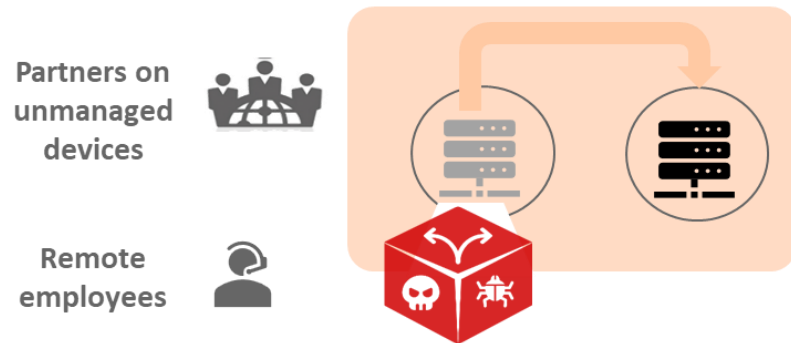
**Endpoint Detection &
Response
(EDR)**

Managed Security Services (MDR / SOCaaS)

Delivered via Partners

Explicit Trust with ZTNA

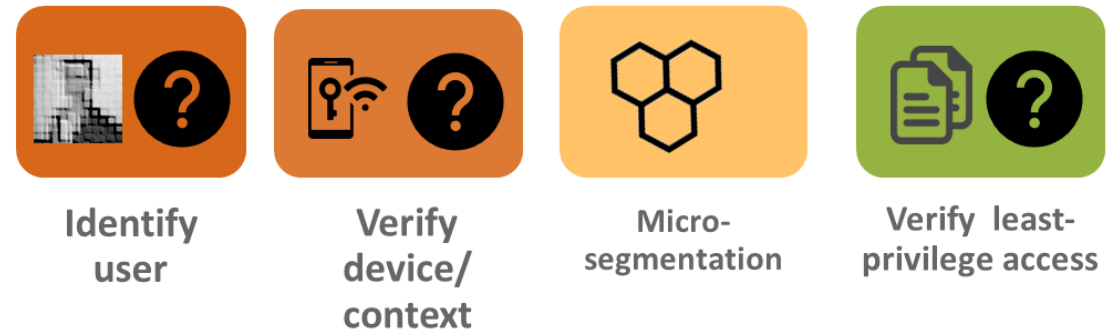
IMPLICIT TRUST



- Broad network access
- Including copying and moving assets
- Cumbersome - static and manual config

TRUST EVERYTHING INSIDE
- PRONE TO BREACH

EXPLICIT TRUST



- Verify and least privilege - access only what's required
- Continuous monitoring of usage
- Real-time access control - can be revoked

VERIFY EVERYTHING & TRUST NOTHING
- BREACH CONTAINED

Zero Trust → Never Trust, Always Verify



Verify The User

(Modern Auth)



Verify Their Device

(Device VPN, EPC)



Verify Their Context

(Recurring EPC, Time-based Access)



Segmented App Access

(HTML5 bookmarks for RDP, HTTPS, etc.)



Sonicwall CSE

Crea un accesso sicuro per i tuoi utenti, ovunque essi siano e qualsiasi dispositivo usino
Verifica la protezione in tempo reale
Ottimizza la tua infrastruttura
Previene gli attacchi sofisticati e zero day sui tuoi utenti e dispositivi



Cloud Delivered

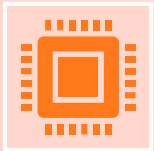


Intelligent Routing



Zero Trust Security

Facile, Veloce e Sicura



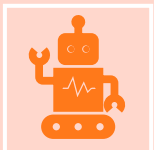
Easy to manage

Simple cloud-based policies for multi-tenant management
One-click deployment and real-time upgrades
Easily integrates with existing tools (IDP, EDR, MDM, SIEM)



Fast and reliable connectivity

No more slow / dropped connections
Elastic scaling with cloud throughput; no concurrent user limits
Global infrastructure with high-availability



Zero Trust security

Fine-grained access controls
Advanced device posture management
Real-time continuous policy enforcement

CSE



Modernize VPN & Firewall

- High-performance network tunnel and identity-aware proxy
- SaaS application security
- Visibility across all users, devices, apps, and access patterns
- Great UX – easy, one-click access without a password



3rd Party Access/ BYOD/M&A

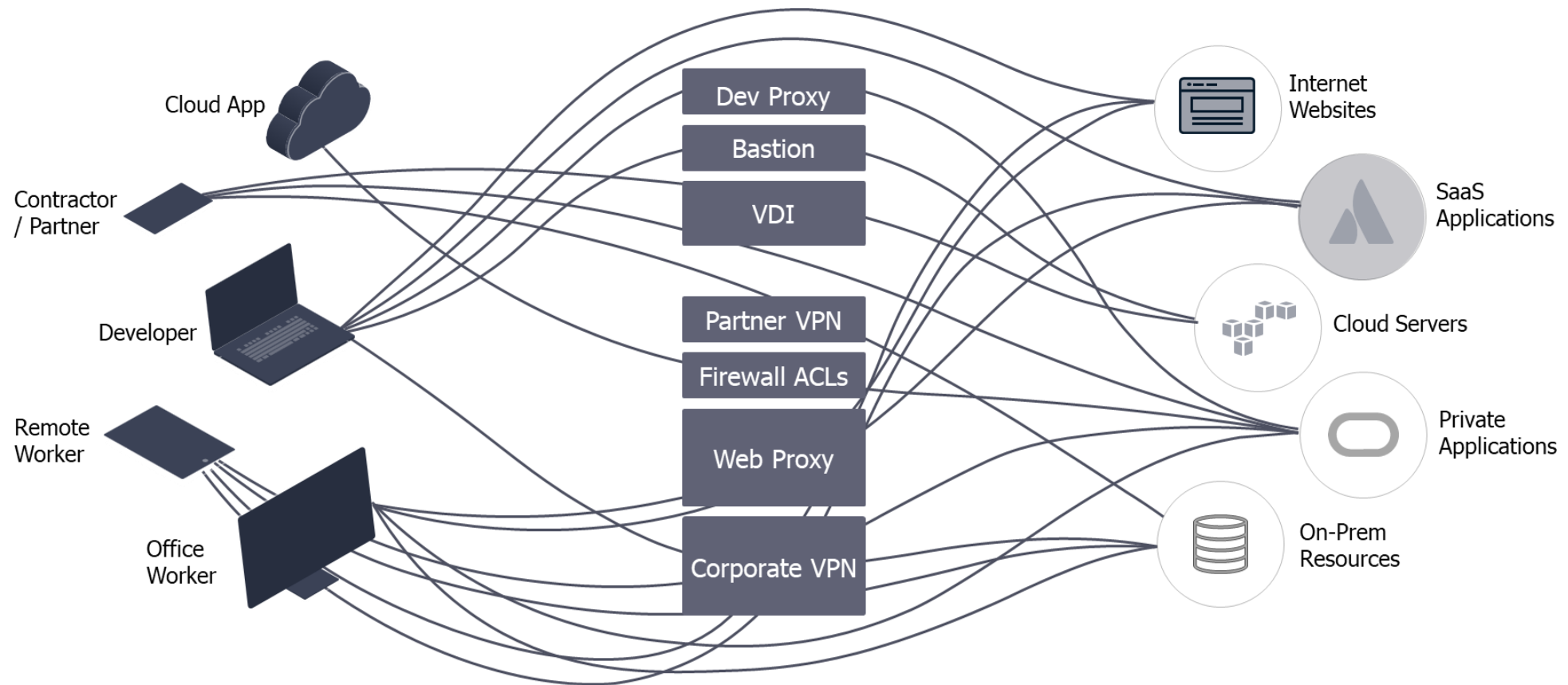
- Least privilege application access based on user & device context
- Agent-based and agentless access to websites, SSH/RDP, etc.
- Protect against ransomware and lateral movement



Device Trust & Internet Threat Protection

- Advanced device posture checks
- Continuous authentication & conditional authorization
- Proactive defense for users being phished or straying onto malicious web sites

Il perimetro cresce

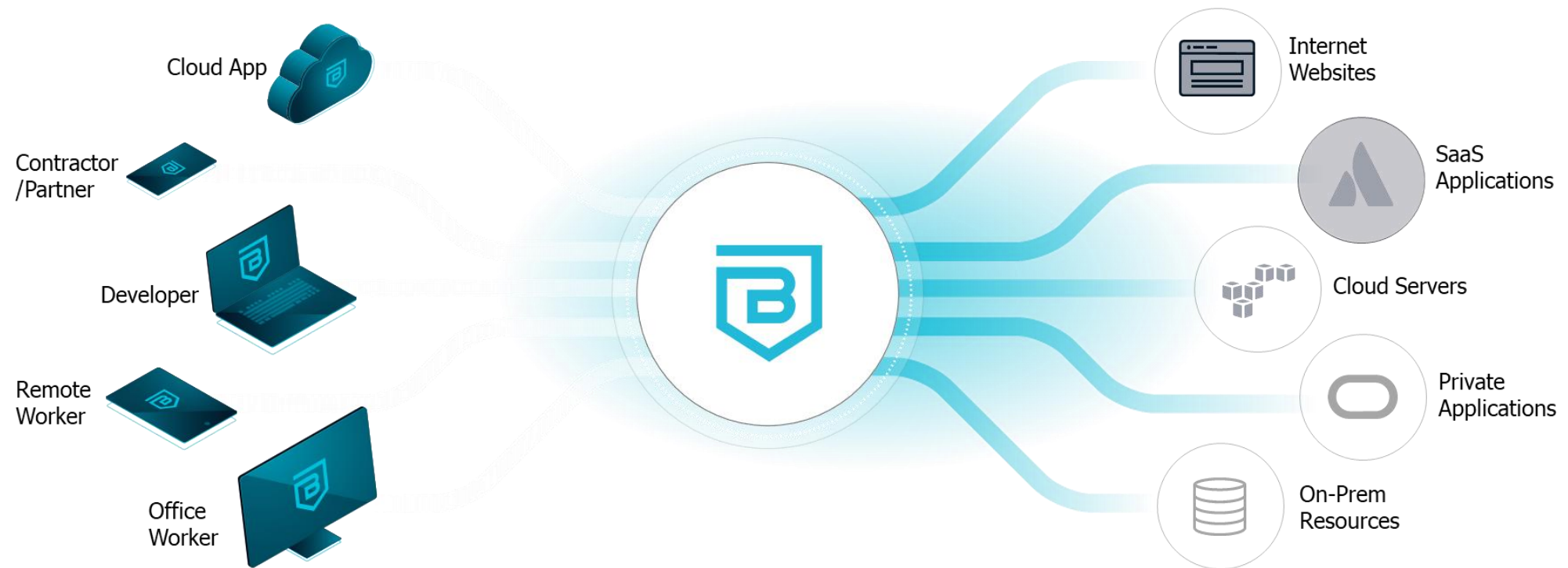


Complex Operations

Poor User Experience

Weak Security

La soluzione

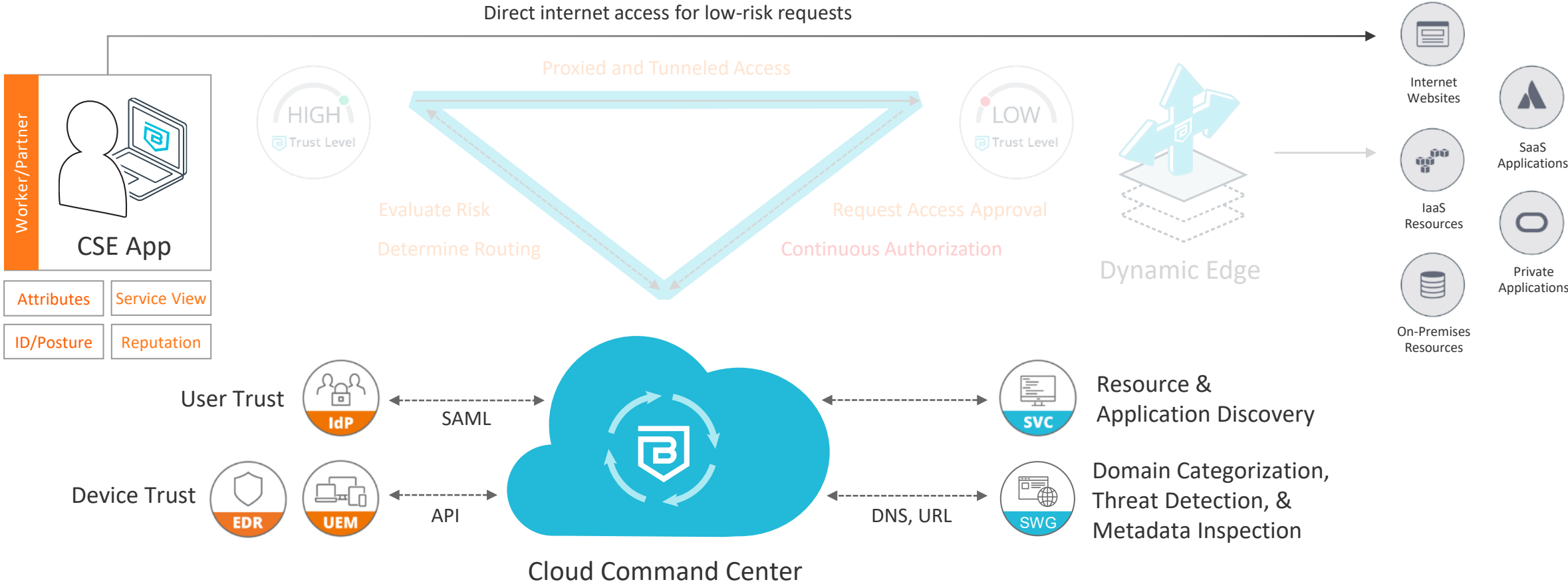


Simplified Operations

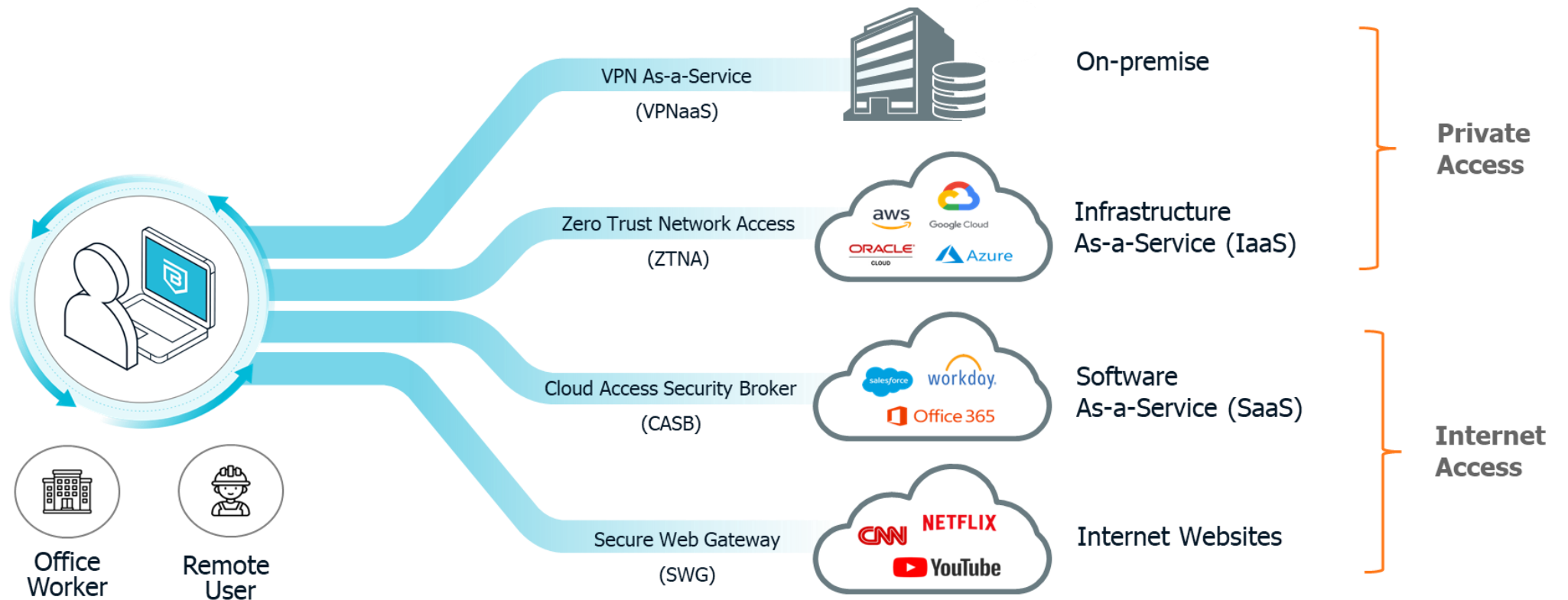
Great User Experience

Robust Security

La soluzione



La soluzione



Cloud enforced and delivered

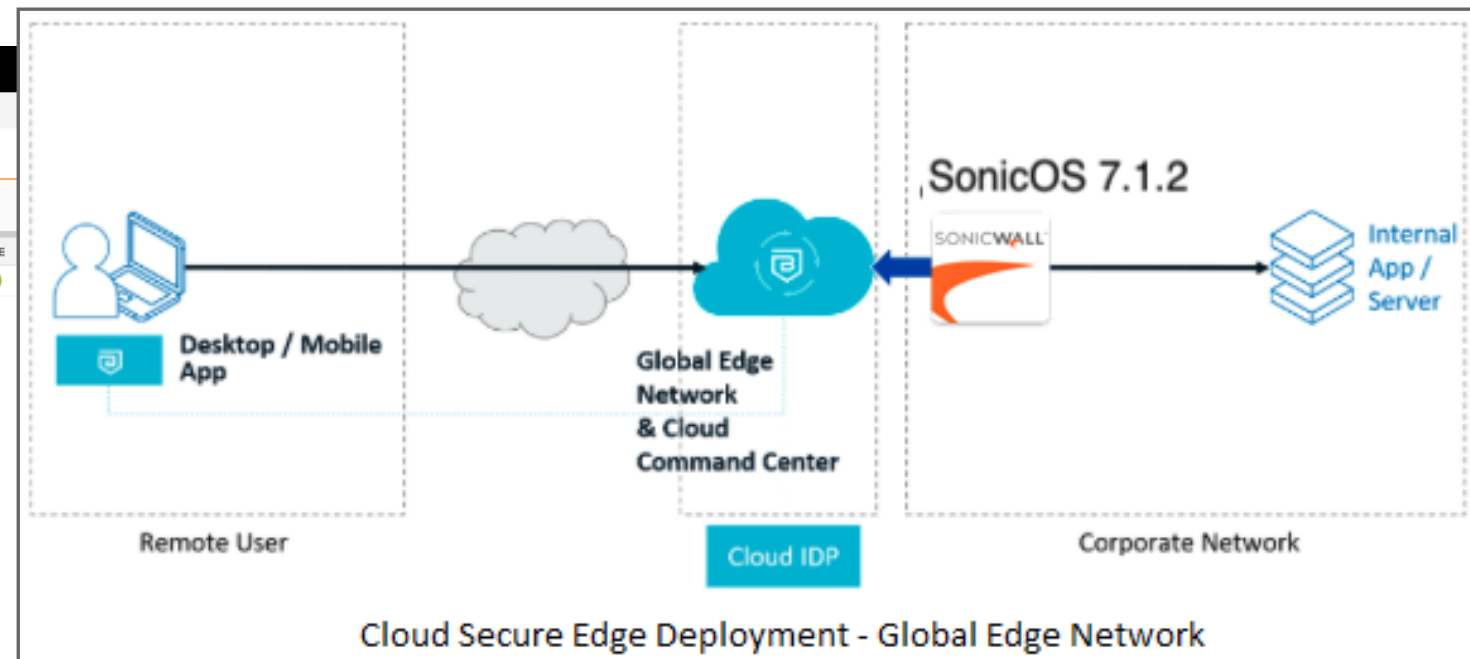
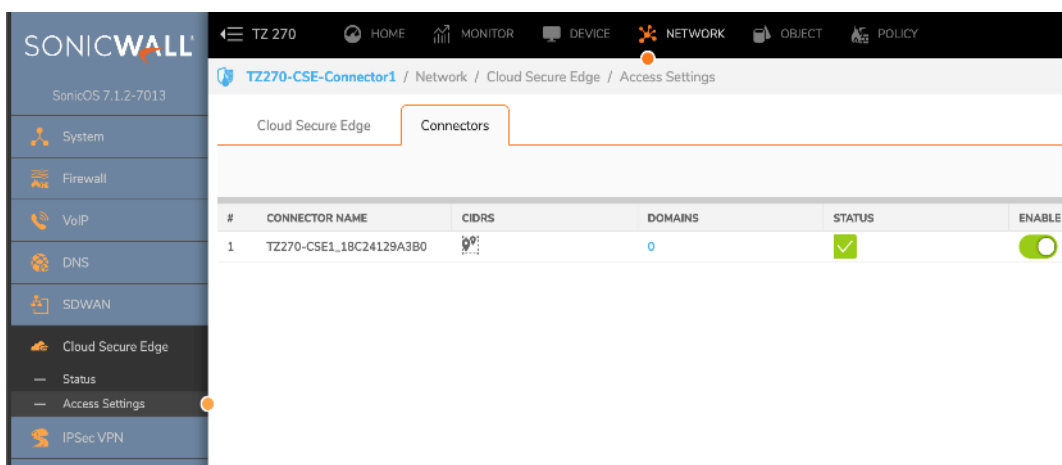
Network-independent security

End-user experience obsessed

Firewall Connector

Cloud Secure Edge (CSE) offer due tipi di deployment per l'accesso ai servizi on-prem: **Self-hosted Private Edge** e **Global Edge Network**.

Dal Firmware SonicOS 7.1.2 i firewall possono funzionare da connettori al Global Edge Network.



Hands-on

SONICWALL[®]
CLOUD SECURE EDGE

Enter your Org Name

CONTINUE

“As a cybercriminal, all you need to do is compromise one machine, one user or one device, and you have access to anything in the network.”

Ashish Jain

<https://www.sonicwall.com/products/cloud-secure-edge>

<https://www.gartner.com/en/information-technology/glossary/secure-access-service-edge-sase>

<https://www.banyansecurity.io/>

https://www.youtube.com/watch?v=7nMGvWcf_WQ&list=PL4mnjMNj4Iq-OStHZ_d2mv7ZuNJyJQBDq

<https://docs.banyansecurity.io/>

<https://docs.banyansecurity.io/docs/securing-private-resources/>

<https://docs.banyansecurity.io/docs/securing-public-applications/>

Q&A

PROSSIMI APPUNTAMENTI

21 FEBBRAIO: Acronis Disaster Recovery

28 FEBBRAIO: Wasabi Cloud Storage

<https://events.tdsynnex.it/cyber-unit-missione-protezione/>

TEAM SECURITY: security.it@tdsynnex.com

SPEAKER: andrea.pezzoni@tdsynnex.com

fdiamantini@sonicwall.com