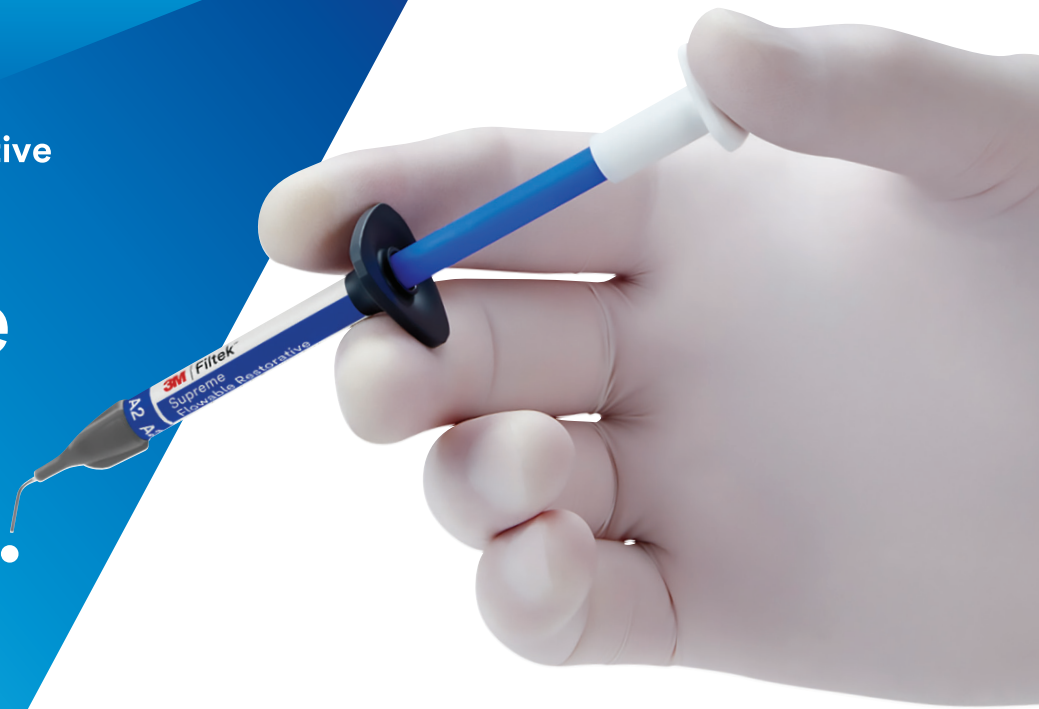




Filtek™
Supreme
Flowable Restorative

Go with the
flow with
confidence.

*Now with expanded
indications!*



Do more with a flowable you trust.

To help you do more with your day, we've expanded the indications of award-winning 3M™ Filtek™ Supreme Flowable Restorative. Now you can use this popular, clinically proven flowable for all classes of direct restorations. Plus, take advantage of our updated syringe, with its ergonomic design and finer, bubble-reducing tip.



Expanded indications

Versatile for an expanded range of indications and techniques – classes I-V.



Increased comfort

Ergonomic syringe designed for increased comfort while reducing bubbles and material “run-on.”



Precision placement

Finer tip (27 gauge) enables precise placement in hard-to-reach areas.



Reduce bubbles and waste

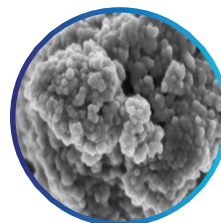
Virtually no bubbles or material “run-on” during dispensing gives you better control.

Additional benefits

- ▶ Warm up to 70°C (158°F) for up to one hour*
- ▶ Single-use capsule design available to reduce risk of cross-contamination
- ▶ Excellent adaptation, polish retention and wear resistance
- ▶ 12 shades
- ▶ Formulated to match 3M™ Filtek™ Supreme Ultra Universal Restorative and 3M™ Filtek™ Universal Restorative

3M's patented TRUE nanotechnology

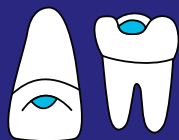
This patented technology makes the nanoparticles more uniform in size, resulting in excellent wear resistance and polished retention.



*Refer to Instructions for Use for complete product information.

Expanded indications

(Incremental up to 2 mm)



Class I



Class II



Class III



Class IV



Class V



Base



Liner



Repair of Indirect
(small defects)



Repair¹



Pit & Fissure
Sealant

Refer to Instructions for Use for full list of indications.

1. Repair of resin and acrylic temporary materials




Ordering information



3M™ Filtek™ Supreme Flowable Restorative Refills

Syringe refills include: 2 – 2g syringes; 20 dispensing tips.

SHADE	ITEM NO.
A1	6032A1
A2	6032A2
A3	6032A3
A3.5	6032A3.5
A4	6032A4
B1	6032B1
B2	6032B2
C2	6032C2
D2	6032D2
White	6032W
Extra White	6032XW
OA3	6032OA3

ITEM NO.	PRODUCT INFO.
3700T	3M™ Filtek™ Supreme Flowable Restorative Dispensing Tips, 20-gauge, Gray (20) 
3700T-100	3M™ Filtek™ Supreme Flowable Restorative Dispensing Tips, 20-gauge, Gray (100) 
3700T27	3M™ Filtek™ Supreme Flowable Restorative Dispensing Tips, 27-gauge, Black (20) 



3M™ Filtek™ Supreme Flowable Restorative

20 - 0.2g Capsules

SHADE	ITEM NO.
A1	6033A1
A2	6033A2
A3	6033A3
A3.5	6033A3.5
AA4	6033A4
B1	6033B1
B2	6033B2
C2	6033C2
Da	6033D2
White	6033W
Extra White	6033XW
OA3	6033OA3
A2-S	6033A2-S

Warranty: 3M warrants this product will be free from defects in material and manufacture at the time of purchase. 3M MAKES NO OTHER WARRANTIES INCLUDING ANY IMPLIED WARRANTY OF MERCHANTABILITY OR FITNESS FOR A PARTICULAR PURPOSE. User is responsible for determining the suitability of the product for user's application. If this product is defective within the warranty period, your exclusive remedy and 3M's sole obligation shall be repair or replacement of the 3M product.

Limitation of Liability: Except where prohibited by law, 3M will not be liable for any loss or damage arising from this product, whether direct, indirect, special, incidental or consequential, regardless of the theory asserted, including warranty, contract, negligence or strict liability.



3M Oral Care
2510 Conway Avenue
St. Paul, MN 55144-1000 USA

Phone 1-800-634-2249
Web 3M.com/dental

3M and Filtek are trademarks of 3M. All other trademarks herein are the property of their respective owners. © 3M 2022. All rights reserved. 70-2013-7231-8 (REV. 9/2022)