



Filtek™
Supreme
Flowable Restorative

Designed to give you
the upper hand



Do more with a flowable you trust.

Designed for improved comfort and injection molding, our award-winning 3M™ Filtek™ Supreme Flowable Restorative is now available for expanded indications. You can use this popular, clinically proven flowable for all classes of direct restorations. Plus, take advantage of our updated syringe, with its ergonomic design and finer, bubble-reducing tip. A single-use capsule design is also available to reduce the risk of cross-contamination.

Expanded indications

Versatile for an expanded range of indications and techniques, classes I-V.

Reduce bubbles and waste

Virtually no bubbles or material “run-on” during dispensing gives you better control.

Easy to hold and inject

Triangle finger plate and plunger make it quick and easy to personalize your grip.

No more guessing

The blue syringe barrel indicates the remaining material volume. When your syringe is empty, only the white plunger shows.

Precise placement

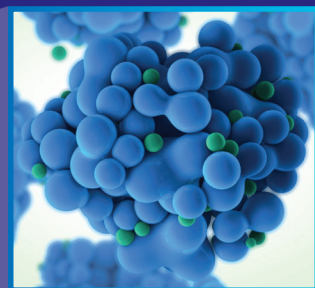
20-gauge cannula is easy to bend without kinking, and 27-gauge cannula enables precise placement in hard-to-reach areas.

Excellent adaptation

Excellent adaptation, polish retention and wear resistance.



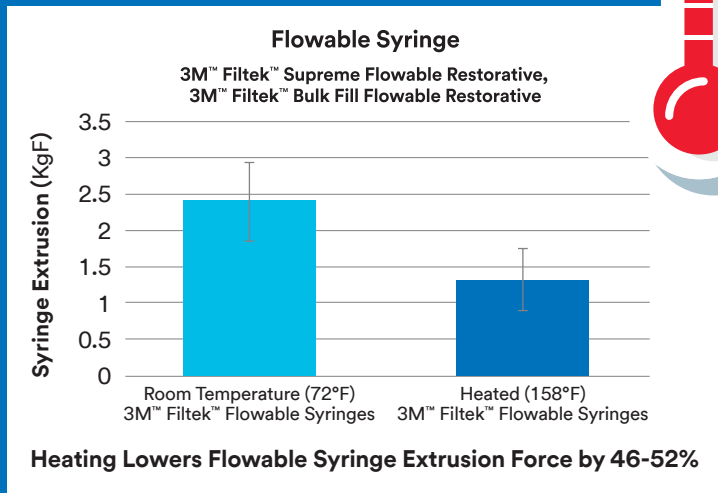
3M's popular flowable is made with TRUE nanotechnology. This patented technology makes the nanoparticles more uniform in size, resulting in excellent wear resistance and polished retention.



Warm with confidence

Why warm 3M Composites?

- Warmed composites are more fluid, for easier handling
- Warming may improve adaptation of 3M composite to tooth structure¹
- Warming lowers extrusion force²



Tips for success

You can safely warm Filtek Restoratives in as little as 5 minutes! Follow these general guidelines, and refer to the instructions for use for more information.

DO

DO heat flowable syringes up to 70°C (158°F) for up to 1 hour, up to 25 times.

DO do heat flowable and universal capsules to 70°C (158°F) for up to 1 hour.

DO only use commercially available composite warmer devices.

DO consult the Instructions for Use for more information.

DO NOT

Do NOT use heat from a light bulb, microwave, mug warmer or other unapproved heating devices. Consult the Instructions for Use for more information.

Get performance with peace of mind

Physical Properties Unchanged:³

- Diametral tensile strength
- Flexural modulus
- Flexural strength
- Color stability
- Depth of cure



*Recommended heating temperature

1 Based on a 3M sponsored in vitro study. 11 dentists placed 88 Class II MOD restorations. Teeth were microscopically exemplified for flaws, defects and voids. Comparisons made between techniques and operators.

2 3M Internal Data

3 When warmed according to our Instructions for Use. Syringes can be warmed up to 70°C, 158°F for up to one hour, up to 25 times. Capsules can be warmed up to 70°C, 158°F for up to one hour.

A shade-matched palette

3M™ Filtek™ Supreme Flowable Restorative shades are formulated to be an identical match to 3M™ Filtek™ Universal Restorative and 3M™ Filtek™ Supreme Ultra Universal Restorative. (A1, A2, A3, A3.5, A4, B1, B2, C2, D2)



3M™ Filtek™ Supreme Flowable Restorative



3M™ Filtek™ Universal Restorative

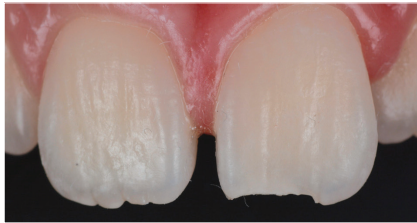


3M™ Filtek™ Supreme Ultra Universal Restorative



Clinical cases

3M™ Filtek™ Supreme Flowable Restorative offers a smooth transition from material to tooth for esthetic restorations.



Before



First layer of flowable, prior to light curing



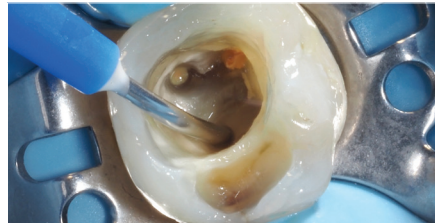
After

Photos courtesy of Dr. Walter Devoto, Santa Margherita Ligure, Italy

Filtek Supreme Flowable Restorative adapts easily and seals the margin.



Before



Flowable placement in a thin layer at the bottom of the access cavity



After

Photos courtesy of Dr. Ivona Bago, Zagreb, Croatia

Expanded Indications (Incremental up to 2 mm)

Class I Class II Class III Class IV

Class V Liner Repair of Indirect (small defects)

Repair¹ Pit & Fissure Sealant Base

Refer to Instructions for Use for full list of indications.
1. Repair of resin and acrylic temporary materials

Ordering information

3M™ Filtek™ Supreme Flowable Restorative Refills

Syringe refills include: 2 – 2 g syringes; 20 dispensing tips.

Capsule refills include 20 - 0.2 g capsules.



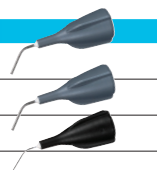
Syringe Refills

Capsule Refills

Shade	Item No.	Item No.
A1	6032A1	6033A1
A2	6032A2	6033A2
A3	6032A3	6033A3
A3.5	6032A3.5	6033A3.5
A4	6032A4	6033A4
B1	6032B1	6033B1
B2	6032B2	6033B2
C2	6032C2	6033C2
D2	6032D2	6033D2
White	6032W	6033W
Extra White	6032XW	6033XW
OA3	6032OA3	6033OA3
A2-S		6033A2-S

3M™ Filtek™ Supreme Flowable Restorative Refills

Item No.	Product Information
3700T	20-gauge, Gray (20)
3700T-100	20-gauge, Gray (100)
3700T27	27-gauge, Black (20)



Warranty: 3M warrants this product will be free from defects in material and manufacture at the time of purchase. 3M MAKES NO OTHER WARRANTIES INCLUDING ANY IMPLIED WARRANTY OF MERCHANTABILITY OR FITNESS FOR A PARTICULAR PURPOSE. User is responsible for determining the suitability of the product for user's application. If this product is defective within the warranty period, your exclusive remedy and 3M's sole obligation shall be repair or replacement of the 3M product.

Limitation of Liability: Except where prohibited by law, 3M will not be liable for any loss or damage arising from this product, whether direct, indirect, special, incidental or consequential, regardless of the theory asserted, including warranty, contract, negligence or strict liability.



3M Oral Care
2510 Conway Avenue
St. Paul, MN 55144-1000 USA

Phone 1-800-634-2249
Web 3M.com/dental

3M and Filtek are trademarks of 3M Company. All other trademarks herein are the property of their respective owners. © 3M 2022.

All rights reserved.
70-2013-7229-2 (REV. 10/2022)