

Restoring severe anterior wear with a simplified solution



Clinical Case

Dr. Paulo Monteiro

About the case

Dental abrasion and wear present as a unique challenge in restorative dentistry. Ensuring that function and form are restored, along with natural esthetics, can be a challenge – especially with multi-shade composite systems. In this case, we show how Filtek™ Easy Match Universal Restorative allows for a simplified, esthetic solution in Class IV restorations.

Dental restorative used:

Filtek™ Easy Match Universal Restorative, Warm shade



About Dr. Paulo Monteiro

In 2005 Paulo completed his specialization in Esthetic and Restorative Dentistry at the ISCSEM, Lisbon, Portugal. In 2010 he finished a Master's degree in Dental Medicine and is currently working towards a PhD in Dentistry at Universidade de Santiago de Compostela, Spain. He has taken the International Professional Course of CAD/CAM technology in Restorative Dentistry at the University of Zurich in 2008. Presently, he is an Assistant Professor at ISCSEM, for the Aesthetic and Restorative Dentistry Post-graduation program and for the Oral Rehabilitation Department at ISCSEM. In parallel, he is the head of Clinical Aesthetic Dentistry advanced consultation at ISCSEM, the head of Operative Dentistry Technology Training Course for Dental Assistants and the head of Intra-Oral Photography Technology Training Course for Dental Assistants in Egas Moniz, Lisbon, Portugal. He is also involved researching new dental materials, including composite resins, dental adhesives, dental ceramics and new technologies. He is an active member of the International Association for Dental Research, and regularly presents research in the dental materials field. He is author and co-author of multiple publications in scientific international journals and gives lectures in national and international courses and congresses in aesthetic dentistry. In his private practice, he devotes himself exclusively to aesthetic dentistry.

Case overview

Refer to instructions for use (IFU) for complete product information.



1 Initial situation



2 Using a custom shade guide, this patient's richer tooth shade was determined to match Filtek™ Easy Match Universal Restorative, Warm shade



3 After isolation, teeth were prepared minimally to remove sharp enamel remnants



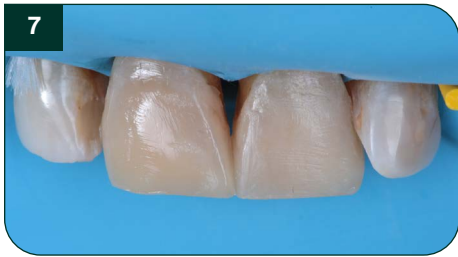
4 After etching with phosphoric acid, 3M™ Scotchbond™ Universal Plus Adhesive is applied to the preparation



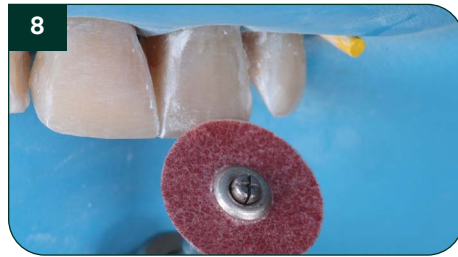
5 After isolation with mylar strips, Filtek Easy Match Universal Restorative, Warm shade is used to restore the buccal and incisal edges



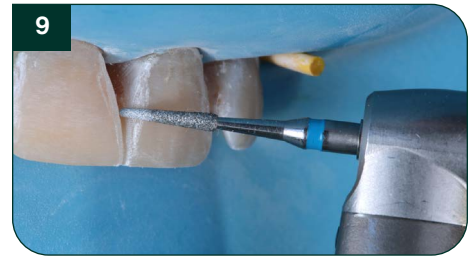
6 Note the naturally-adaptive opacity on the incisal edge of the restored tooth



7 Both centrals restored. Note the opacity gradient that follows the natural appearance



8 3M™ Sof-Lex™ XT Contouring and Polishing Discs and a fine low speed diamond bur are used to finish the restorations, removing gross excess and defining embrasures and line angles



9 3M™ Sof-Lex™ Diamond Polishing Spirals are used to attain high-gloss polish



10 Result after polishing



11 Natural looking, final result



Solventum Dental Solutions
1-800-634-2249
solventum.com

Learn more at 3M.com/FiltekEasyMatch



©Solventum 2025. Solventum, the S logo, Filtek and Sof-Lex are trademarks of Solventum or its affiliates. 3M, Scotchbond and the 3M logo are trademarks of 3M. Other trademarks are the property of their respective owners.