

# Improving smiles with Filtek™ Easy Match Universal Restorative



## Clinical Case

Dr. María Cura

### About the case

A 21-year-old female patient, otherwise healthy, presented with a smile complaint: "I would like to improve my smile. My laterals look broken, and the canine is too sharp." Exam revealed no articular disorder. Occlusion was stable.

#### Dental restorative used:

Filtek™ Easy Match Universal Restorative,  
Bright shade



#### About Dr. María Cura

Dr. María Cura graduated in dentistry from the Rey Juan Carlos University in Madrid. She continued her postgraduate studies in endodontics and restorative dentistry in the same University. Since 2011, she has taught at Rey Juan Carlos University, where in 2015 she defended her international PhD. She is also involved in researching new dental materials with the IDIBO group. She is author and co-author of multiple publications in scientific international journals and gives lectures in national courses and congresses in esthetic dentistry. In her practice she focuses on esthetic dentistry.

# Case overview

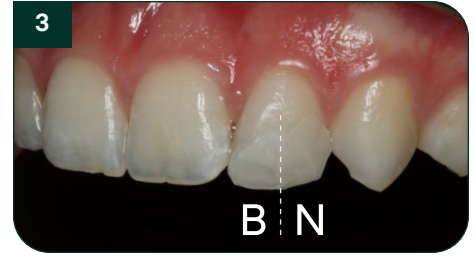
Refer to instructions for use (IFU) for complete product information.



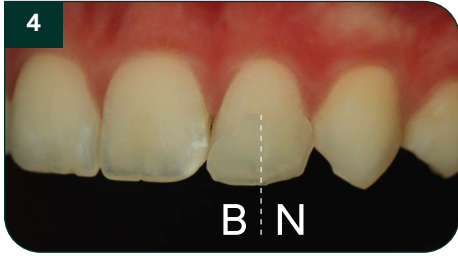
1 Anatomy of the right lateral



2 Anatomy of the left lateral and canine



3 Color test with regular photography – Bright shade blends better due to higher value



4 Color test with polarized photography



5 After rubber dam isolation, the biofilm is removed with pumice paste and a prophyl brush



6 Etch procedure



7 Bonding with 3M™ Scotchbond™ Universal Plus Adhesive



8 Application of Filtek™ Easy Match Universal Restorative, Bright shade



9 Shaping anatomy of right lateral incisor with spatula



10 A brush helps with shape and composite blend on tooth surface



11 All restorations before finishing and polishing. Glycerin gel application before final light-curing to prevent the inhibition layer



12 Final result after finishing and polishing with 3M™ Sof-Lex™ Finishing and Polishing Discs and Spirals



Solventum Dental Solutions

1-800-634-2249  
solventum.com

Learn more at [3M.com/FiltekEasyMatch](https://3M.com/FiltekEasyMatch)



©Solventum 2025. Solventum, the S logo, Filtek and Sof-Lex are trademarks of Solventum or its affiliates. 3M, Scotchbond and the 3M logo are trademarks of 3M. Other trademarks are the property of their respective owners.