

# Simple peg-shaped lateral restoration



Clinical Case

Dr. Walter Devoto

## About the case

What could be simple about restoring a peg shaped lateral? With Filtek™ Easy Match Universal Restorative, it is easy to focus on shape, contour and anatomy, while achieving a natural-looking, esthetic result – without worrying about multiple layers and shades of composite.

### Dental restorative used:

Filtek™ Easy Match Universal Restorative,  
Natural shade



### About Dr. Walter Devoto

Dr. Walter Devoto graduated with honors in dentistry and dental prosthesis in 1991 from the University of Genoa, Italy. He is particularly interested in the fields of conservative dentistry and esthetic dentistry and runs his own private practices in Sestri Levante and Portofino. In addition, he is collaborating with diverse prestigious dental offices throughout Europe that specialize in esthetic dentistry. He has worked as a teacher and demonstrator at the University of Genoa and as a lecturer at the universities of Siena and Madrid. Now, he is a lecturer at the International University of Catalonia, Barcelona, and visiting professor at the Université de la Méditerranée, Marseille.

# Case overview

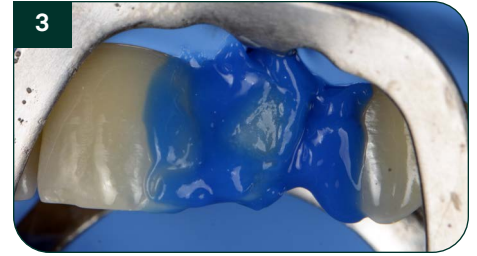
Refer to instructions for use (IFU) for complete product information.



Initial situation



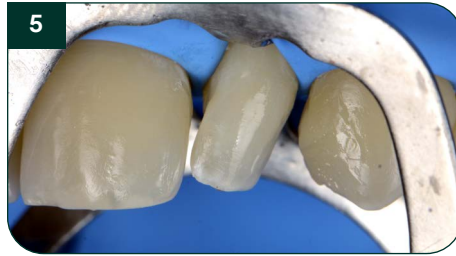
After isolation and retraction, the tooth's enamel is minimally prepped with a fine diamond bur, to enhance adhesion



The preparation and proximal aspects of the adjacent teeth are etched with phosphoric acid



3M™ Scotchbond™ Universal Plus Adhesive is applied to the prep and adjacent teeth, dried and cured



Filtek™ Easy Match Universal Restorative is used to contour the distal aspect of the central incisor, as well as the mesial aspect of the canine



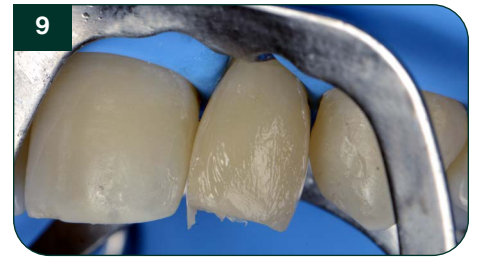
An increment of Filtek Easy Match Universal Restorative is placed on the buccal aspect and contoured to provide a scaffold for the mesial and distal contours of the lateral



Using a sectional matrix, the distal wall and contact point with the canine is created



The same procedure is repeated for the mesial aspect of the lateral, ensuring a contact point



After the general contours are defined, and contact points established, the restoration is ready for finishing and polishing



Final appearance, after finishing and polishing, as well as gingival healing



Solventum Dental Solutions  
1-800-634-2249  
solventum.com

Learn more at [3M.com/FiltekEasyMatch](https://www.3m.com/FiltekEasyMatch)



©Solventum 2025. Solventum, the S logo and Filtek are trademarks of Solventum or its affiliates. 3M, Scotchbond and the 3M logo are trademarks of 3M. Other trademarks are the property of their respective owners.