

Syringe vs. syringe

# A Head-to-Head Comparison

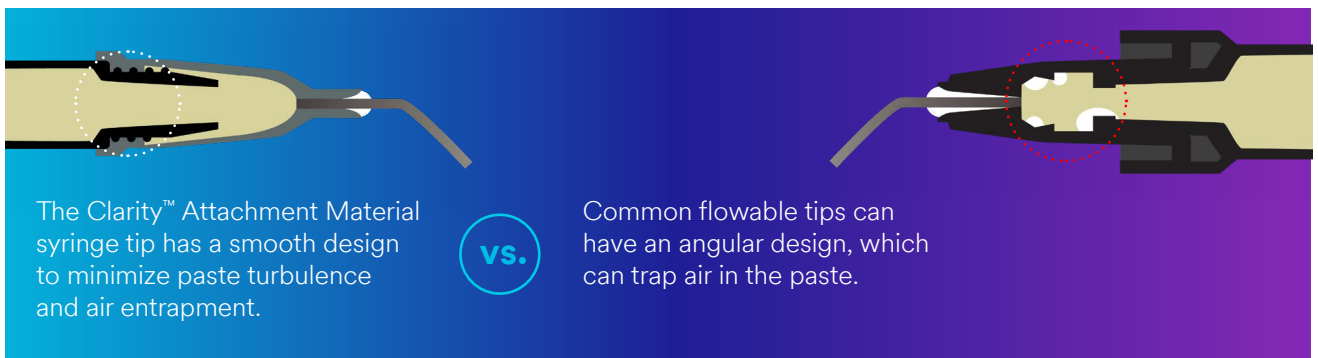
## Clarity™ Attachment Material rises to the top

When it comes to creating successful attachments, the secret is in the syringe. Compared to competitive products, Clarity Attachment Material outperforms all others with a syringe design that virtually eliminates bubbles—and the headaches that come with them.

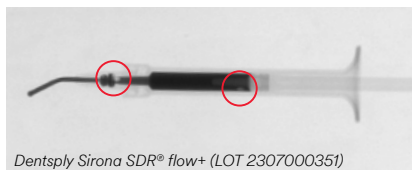


### Virtually bubble-free

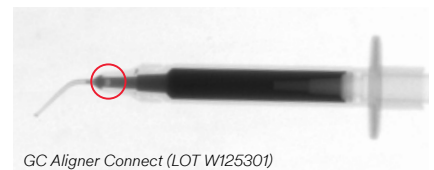
Clarity Attachment Material effectively eliminates bubbles that can compromise the durability of the attachment and create voids that may attract food particles, potentially leading to hygiene and staining issues.



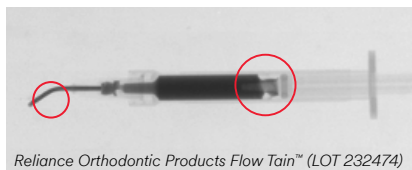
Clarity Attachment Material (LOT NF25351)



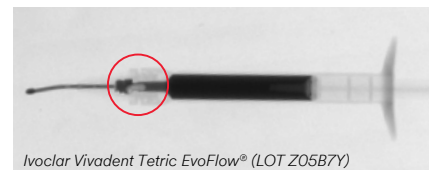
Dentsply Sirona SDR® flow+ (LOT 2307000351)



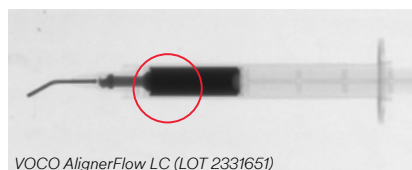
GC Aligner Connect (LOT W125301)



Reliance Orthodontic Products Flow Tain™ (LOT 232474)



Ivoclar Vivadent Tetric EvoFlow® (LOT Z05B7Y)



VOCO AlignerFlow LC (LOT 2331651)



## The flowable that performs like a paste

Clarity Attachment Material provides the ease of a flowable while delivering the strength of a paste for the best of both worlds.

### Stays In Place Like A Paste

Unlike traditional flowables, Clarity Attachment Material does not flow when left on a vertical surface for up to a week.



### Clean, Controlled Dispensing

Material run-on yields waste and reduces control. Stringiness of material creates challenges for precision to prevent under/overfilling of template. Clarity Attachment Material helps solve these issues.

Clarity Attachment Material



Competitive Flowable



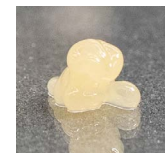
### Self-leveling

Clarity Attachment Material is self-levelling, smoothing out small imperfections, but is not so runny that it would flow out of the attachment template or create a mess.

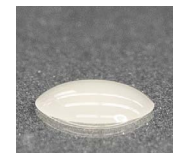
Photograph taken 1 minute after dispensing.



Clarity Attachment Material



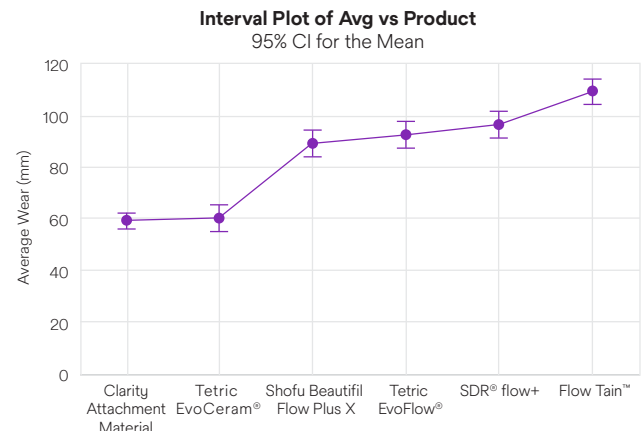
Competitive High-Viscosity Material



Competitive Low-Viscosity Material

### Durable Like a Paste

3-Body-Wear Test\* shows Clarity Attachment Material performs equivalently to a leading paste material and better than competitive flowables.



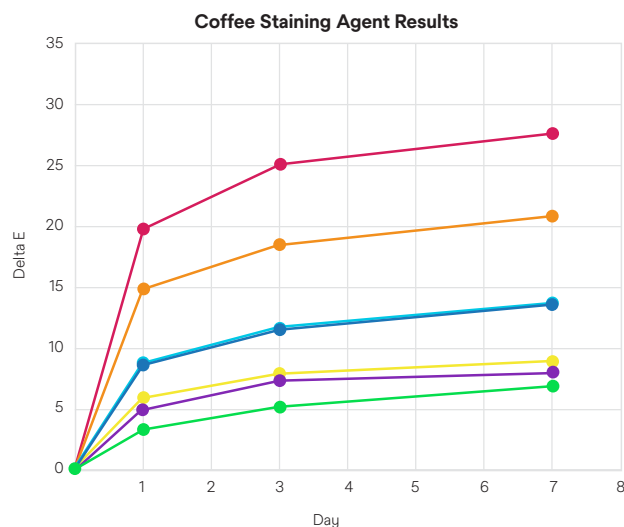
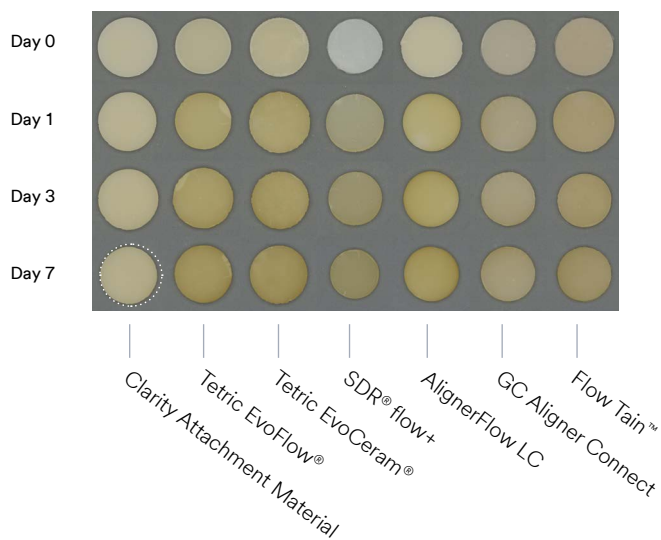
The pooled standard deviation is used to calculate the intervals.



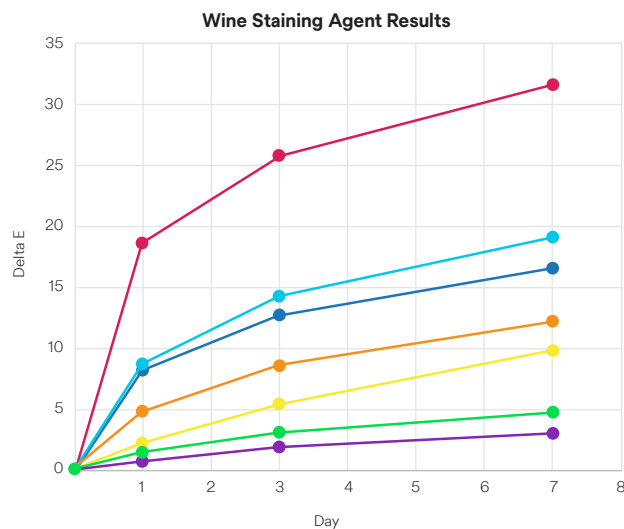
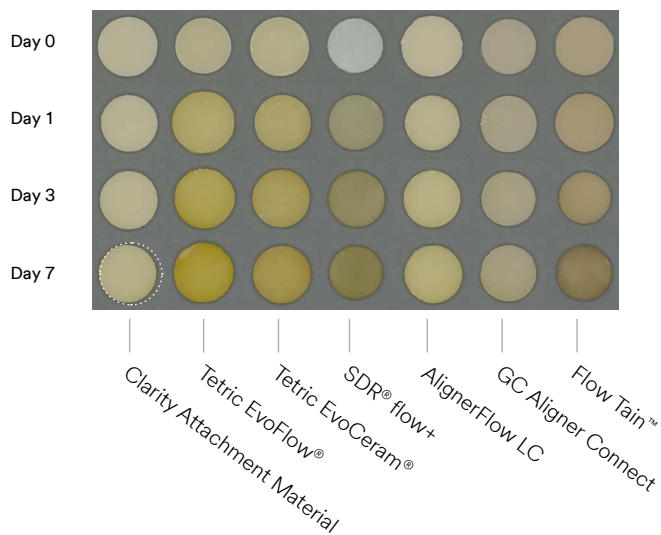
## Excellent stain resistance

Clarity Attachment Material creates beautifully esthetic attachments, delivering superior stain-resistance over leading competitors.

### Coffee stain testing results\*



### Wine stain testing results\*



- Clarity Attachment Material | LOT NF25351
- Ivoclar Vivadent Tetric EvoFlow A2 Shade | LOT Z05B7Y
- Ivoclar Vivadent Tetric EvoCeram® A2 Shade | LOT Z057TZ
- Reliance Orthodontic Products Flow Tain™ (Regular Viscosity) | LOT 232474
- Dentsply Sirona SDR® flow+ | LOT 2307000351
- VOCO AlignerFlow LC | LOT 2331651
- GC Aligner Connect | LOT W125301




\*internal data Solventum



## Head-to-head, there's one clear choice

Only Clarity Attachment Material offers the key performance attributes you need to create long-lasting, successful attachments.



Attachment Material	 Virtually No Bubbles in Syringe	 No Run On	 Superior Stain Resistance (coffee, wine)
<b>Clarity Attachment Material</b> <i>LOT NF25351</i>	✓	✓	✓
GC Aligner Connect <i>LOT W125301</i>	✗	✓	✓
Ivoclar Vivadent Tetric EvoFlow® <i>A2 Shade - LOT Z05B7Y</i>	✗	✗	✗
Ivoclar Vivadent Tetric EvoCeram® <i>A2 Shade - LOT Z057TZ</i>	✗	✓	✗
Reliance Orthodontic Products Flow Tain™ <i>Regular Viscosity - LOT 232474</i>	✗	✗	✗
VOCO AlignerFlow LC <i>LOT 2331651</i>	✗	✓	✗
Dentsply Sirona SDR® flow+ <i>LOT 2307000351</i>	✗	✗	✗

Create esthetic and durable attachments with Clarity Attachment Material: the stain-resistant, bubble-free flowable that performs like a paste.

Ask your Solventum representative how you can switch to Clarity Attachment Material today.