

Vanish™ XT Extended Contact Varnish

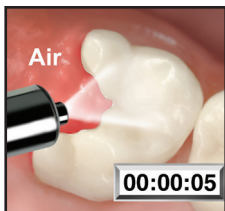
Site Specific Protective Coating for Newly Erupted Teeth Application



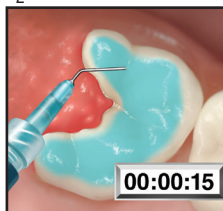
1



2



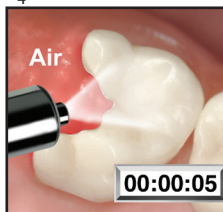
3



4



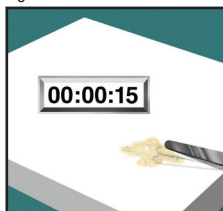
5



6



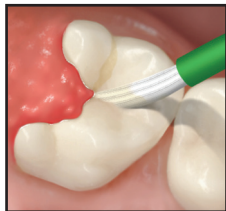
7



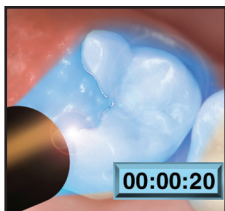
8

Vanish™ XT Extended Contact Varnish

Site Specific Protective Coating for Newly Erupted
Teeth Application



9



10



11

3M ESPE

Dental Products, 2510 Conway Avenue, St. Paul, MN 55144-1000 USA

3M ESPE Customer Care/MSDS Information:

U.S.A. 1-800-634-2249 and Canada 1-888-363-3685

3M, ESPE and Vanish are trademarks of 3M or 3M Deutschland GmbH.

© 3M 2014. All rights reserved.



44-0007-4659-2-B