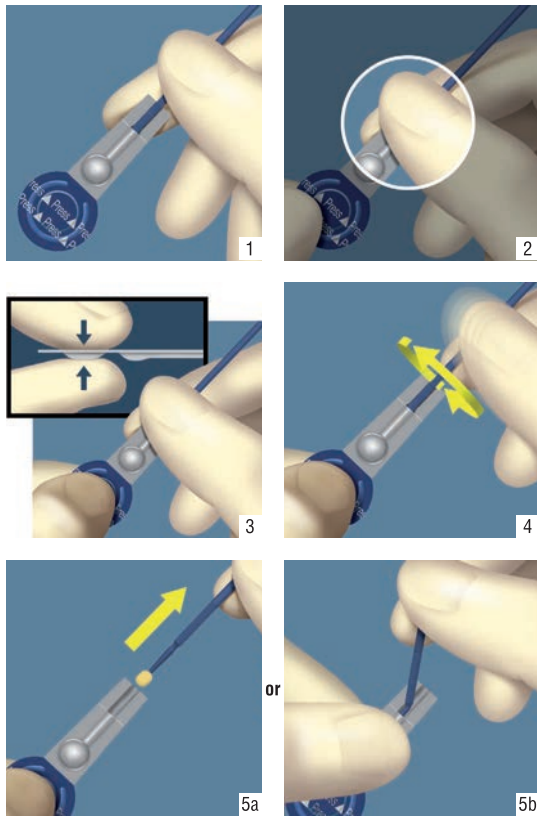




Dispensing from unit dose / Verwendung des L-Pop

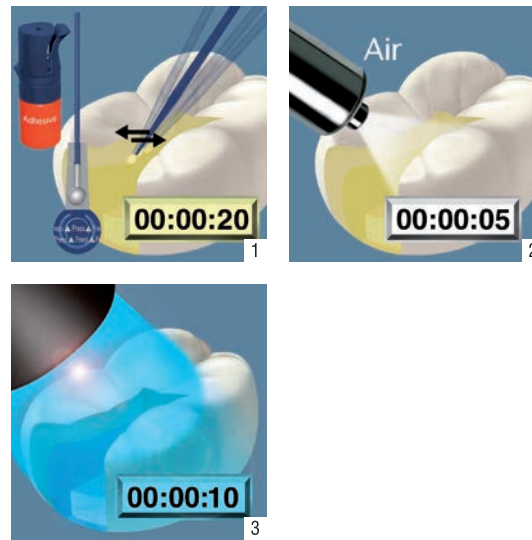


Indications

- Direct light cure restoration
- Intraoral repair
- Sealing of cavities prior to amalgam restorations
- Sealing of cavities and stump preparations prior to temporary cementation of indirect restorations

Indikationen

- Direkte lichthärtende Restaurationen
- Intraorale Reparatur
- Versiegelung von Kavitäten vor Amalgam-Restauration
- Versiegelung von Kavitäten und Stumpfpräparationen vor temporärer Befestigung indirekter Restaurationen

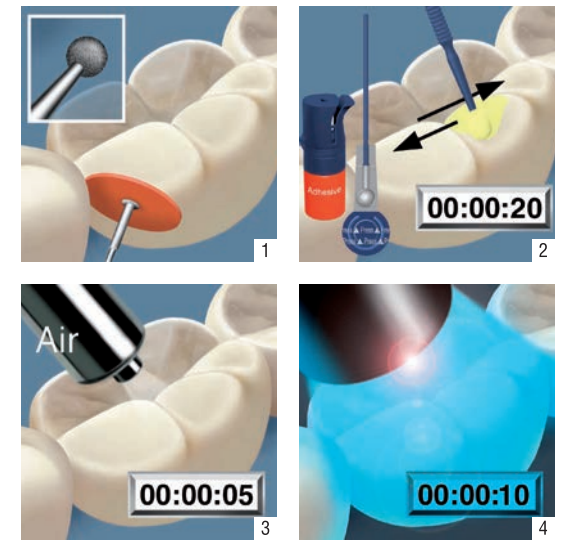


Indications

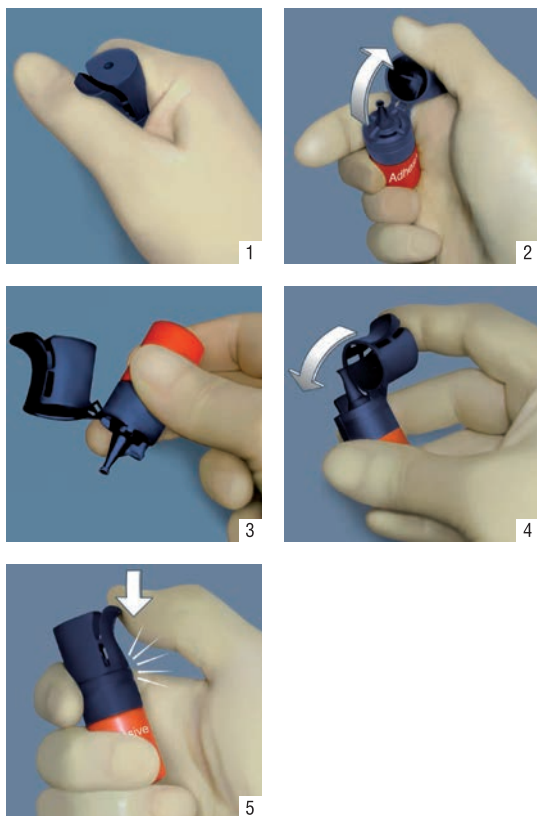
- Protective varnish for Glass Ionomer fillings

Indikationen

- Schutzlack für Glasionomerfüllungen



Dispensing from Vial / Verwendung der Flasche

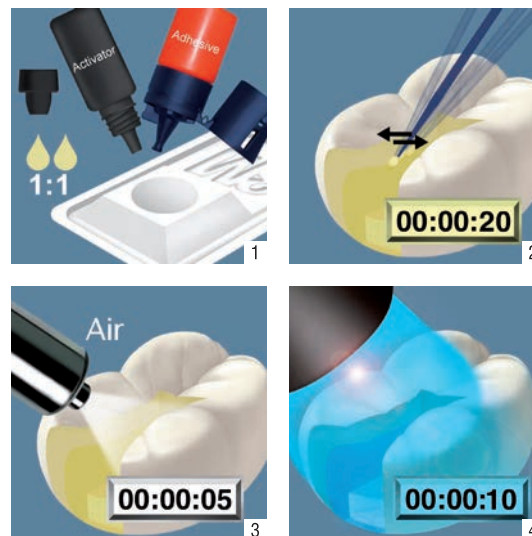


Indications

- Bonding of dual cure cements and core build-up materials and self-cure composites combined with Scotchbond™ Universal DCA, Dual Cure Activator

Indikationen

- Bonding für dualhärtende Zemente und Stumpfaufbaumaterialien und selbsthärtende Composite-Materialien mit Scotchbond™ Universal DCA, Aktivator für Dualhärtung

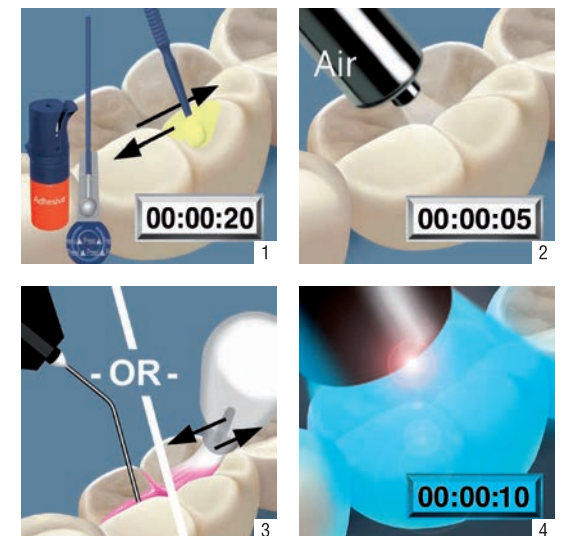


Indications

- Bonding of fissure sealants

Indikationen

- Bonding für Fissurenversiegelungsmaterialien



3M ESPE

3M Deutschland GmbH
 Dental Products
 Carl-Schurz-Str. 1
 41453 Neuss – Germany



3M ESPE
 Dental Products
 St. Paul, MN 55144-1000 U.S.A.

3M, ESPE and Scotchbond are trademarks of 3M Company or 3M Deutschland GmbH. Used under license in Canada. © 2012, 3M. All rights reserved.

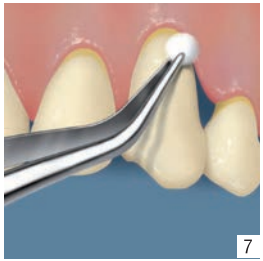
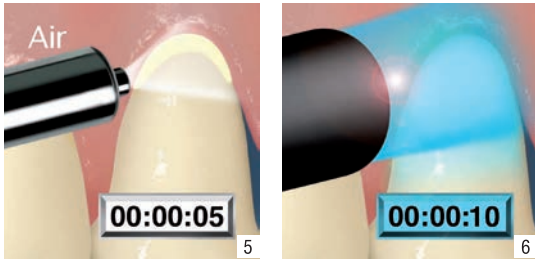
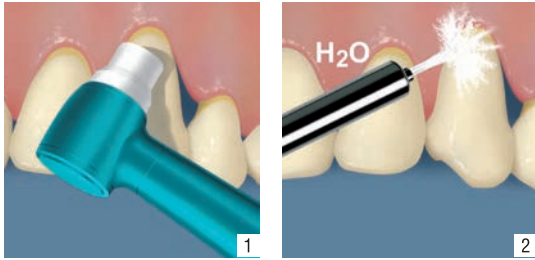


Indications

- Root surface desensitization

Indikationen

- Zahnhalsdesensibilisierung

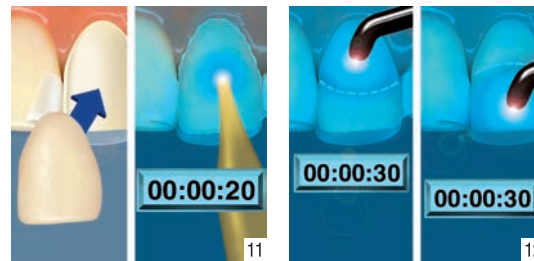
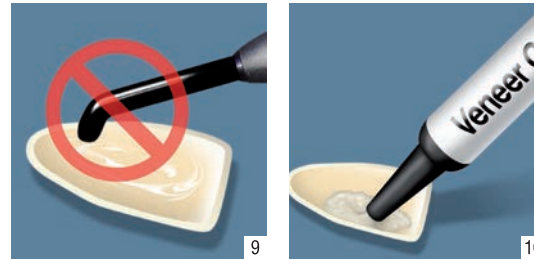
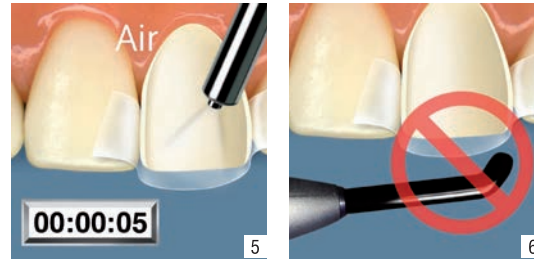
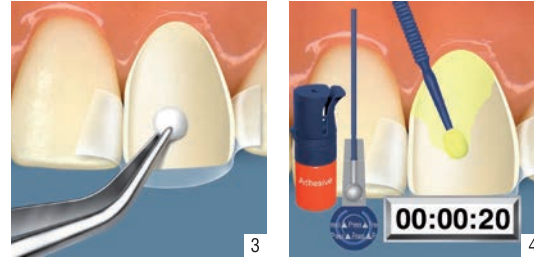
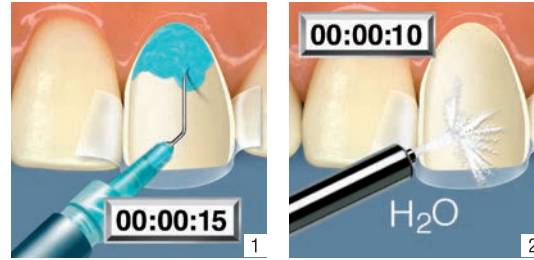


Indications

- Cementation of veneers using RelyX™ Veneer Cement

Indikationen

- Zementierung von Veneers mit RelyX™ Veneer Zement



3M ESPE

3M Deutschland GmbH
 Dental Products
 Carl-Schurz-Str. 1
 41453 Neuss – Germany

CE 0123

3M ESPE
 Dental Products
 St. Paul, MN 55144-1000 U.S.A.