

3M Science.
Applied to Life.™

**If they need added
protection ...
give them the
protection they need.**



Comprehensive treatment can be fast and easy.

Every day you see patients who don't brush and floss like they should. The plaque bacteria and sugars in their mouths form acids that weaken tooth structure, leaving them vulnerable to tooth decay. That's why an effective plan for treating their caries must also include a strategy to protect them from their caries-causing habits.

If that sounds time-consuming or complicated—it isn't. 3M gives you a comprehensive solution that restores and protects ... and that's fast and easy, too.

Give them extra care with the power of fluoride.

Fluoride helps protect the teeth by making enamel more resistant to acid attacks from plaque bacteria, sugars and acidic foods and beverages. As you'll see, each product in this solution releases fluoride—from a glass ionomer restorative to other in-office and at-home treatments.

Effective care for high-risk patients starts in your office and follows them home.

Restore

3M™ Glass Ionomer Restoratives



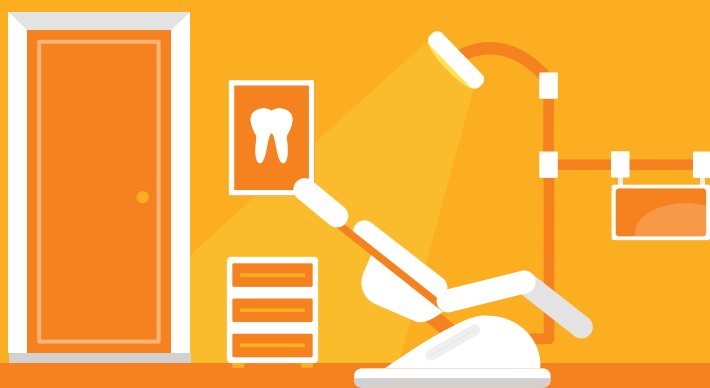
Protect

3M™ Clinpro™ White Varnish



Mineralize

3M™ Clinpro™ Tooth Crème Anti-Cavity Toothpaste



Restore

When treating a patient with caries, a fluoride-releasing glass ionomer (GI) is a restorative of choice. In addition, glass ionomers can be an excellent choice for a minimally invasive procedure.



Convenient to use

When added confidence is important, choose our GI with tri-cure technology.

3M™ Vitremer™ Core Buildup Restorative

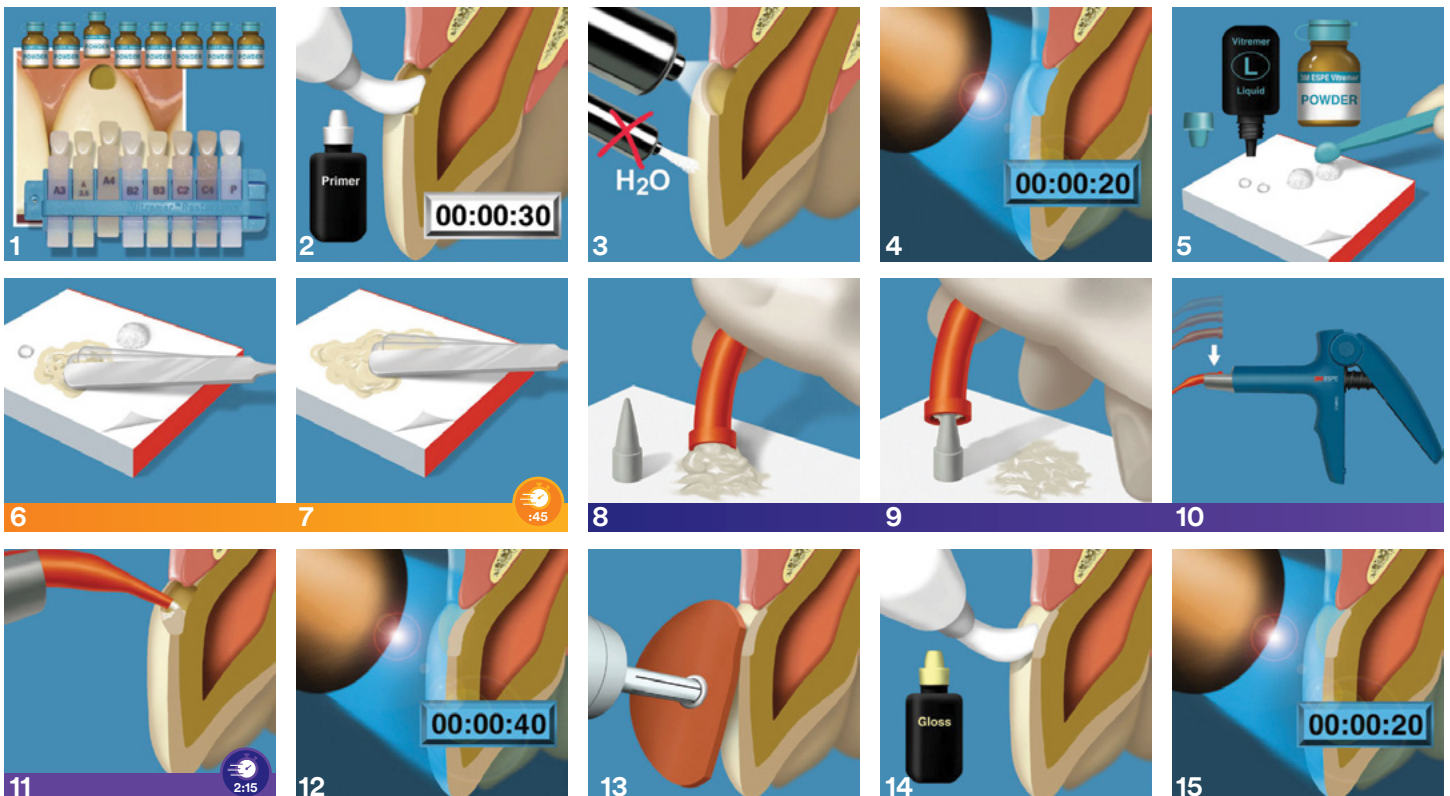
Patented tri-cure technology for added convenience and confidence

The Vitremer core buildup/restorative system is indicated for:

- Class III and Class V restoration
- Restoration of cervical erosion/abrasion lesions
- Restoration of root caries lesions
- Class I and Class II restorations in primary teeth
- Temporary repair of fractured teeth
- Filling defects and undercut areas in crown preparations
- As a core buildup where at least half the coronal tooth structure is remaining to provide structural support for the crown
- Laminate/Sandwich Restorations
- Interim Restoration



3M™ Vitremer™ Glass Ionomer System Class III and V Restoration Technique Guide



Protect and Mineralize

Many studies and years of clinical experience show that the application of fluoride, calcium and phosphate is beneficial to the health of the teeth. You can help protect your patients with a combination of 3M in-office and at-home products containing fluoride and Tri-Calcium Phosphate (TCP).



Extended-release formula

Before they leave, apply the advanced fluoride varnish that stays with them.

3M™ Clinpro™ White Varnish

Studies show the longer a fluoride varnish stays in contact with the teeth, the more effective it is.¹

Clinpro White Varnish, with an extended-release formula and durable long-lasting coating, stays on the teeth longer for more effective protection.

- Releases **more fluoride** after 4 hours than other leading varnishes, continuously releasing up to 24 hours
- High fluoride uptake—even after acid attack
- Contains 22,600 ppm fluoride and tri-calcium phosphate (TCP)
- Relieves hypersensitivity



Mint flavor



Fast and easy horizontal swipe application

1. Source: Karlinsky, Robert L. (2016). Fluoride Varnishes: Why They Work & What to Look For. *EC Dental Science*, 5.6, 1220–1223.



Non-prescription strength

Send them home with powerful protection that's as simple as brushing.

3M™ Clinpro™ Tooth Crème 0.21% Sodium Fluoride Anti-Cavity Toothpaste

Getting patients to comply with a treatment can be challenging. But Clinpro Tooth Crème with TCP simply replaces their current toothpaste in their brushing routine, up to twice a day, making compliance easy.

- Contains 0.21% NaF (950 ppm fluoride ion) and an innovative calcium and phosphate ingredient (TCP)
- Helps strengthen and repair early lesions by remineralizing throughout the lesion—not just on the surface
- Creates acid-resistant mineral in dentin tubules



Ordering Information—Prevention Solutions

3M™ Clinpro™ 5% Sodium Fluoride White Varnish

Item #	Product Information
12249	3M™ Clinpro™ 5% Sodium Fluoride White Varnish, Mint—50 Pack Includes: 50 unit-dose packets (0.5ml each), Mint flavor; 50 applicator brushes
12250	3M™ Clinpro™ 5% Sodium Fluoride White Varnish, Mint—100 Pack Includes: 100 unit-dose packets (0.5ml each), Mint flavor; 100 applicator brushes



3M™ Clinpro™ Tooth Crème 0.21% Sodium Fluoride Anti-Cavity Toothpaste

Item #	Product Information
12117	3M™ Clinpro™ Tooth Crème 0.21% Sodium Fluoride Anti-Cavity Toothpaste Vanilla Mint Flavor – 113 g tube



Ordering Information—Glass Ionomer Solutions

3M™ Vitremer™ Core Buildup Restorative

Item #	Product Information
33031	3M™ Vitremer™ Core Buildup Restorative Kit Includes: 6 – 5g jars of shade powder, 1 each of shades A3, A4, C2, C4, Pedo, Blue; 2 – 8ml vials liquid; 1 – 6.5ml vial primer; 1 – 6.5ml vial finishing gloss; 1 shade guide; 1 mixing pad; 1 mixing well; 1 spoon; 50 delivery tips with pistons; 1 applicator brush handle; 60 disposable brush tips; technique card; Instructions For Use
3303MP BLUE	3M™ Vitremer™ Core Buildup Restorative Kit—Blue Includes: 1 – 5g jar of Blue shade powder; 1 – 2.5ml vial liquid; 1 – 2ml vial primer; 10 delivery tips with pistons; 1 mixing pad; 1 spoon; technique card; Instructions For Use
3303MP PEDO	3M™ Vitremer™ Core Buildup Restorative Kit—Pedo Includes: 1 – 5g jar of Pedo shade powder; 1 – 2.5ml vial liquid; 1 – 2ml vial primer; 1 – 2ml vial finishing gloss; 10 delivery tips with pistons; 1 mixing pad; 1 spoon; technique card; Instructions For Use
3303MP A3	3M™ Vitremer™ Core Buildup Restorative Kit—A3 Includes: 1 – 5g jar of A3 shade powder; 1 – 2.5ml vial liquid; 1 – 2ml vial primer; 1 – 2ml vial finishing gloss; 10 delivery tips with pistons; 1 mixing pad; 1 spoon; technique card; Instructions For Use



3M™ Vitremer™ Core Buildup Restorative—Refills

Item # Product information

Shade powder refills, 9g jar

3303A3	A3
3303A3.5	A3.5
3303A4	A4
3303B2	B2
3303B3	B3
3303C2	C2
3303C4	C4
3303BLUE	Blue
3303PEDO	Pedo

3303L	Liquid refill, 8ml vial
3303P	Primer refill, 6.5ml vial
3303FG	Finishing gloss refill, 6.5ml vial
3303DT	Tips and Pistons, 50 each



3M Oral Care
2510 Conway Avenue
St. Paul, MN 55144-1000 USA

Phone 1-800-634-2249
Web 3M.com/dental

www.3M.com/dental

UPDATE PER YOUR LOCATION

3M Deutschland GmbH
Location Seefeld
3M ESPE • ESPE Platz
82229 Seefeld • Germany
Info3MESPE@mmm.com
www.3MESPE.com

NOTE: Prescribing dentists and physicians should consider total fluoride exposure (dental care plus food, water and other sources) when prescribing these products for use in children.

3M, Clinpro, ESPE and Vitremer are trademarks of 3M or 3M Deutschland GmbH. Used under license in Canada. © 3M 2018. All rights reserved.