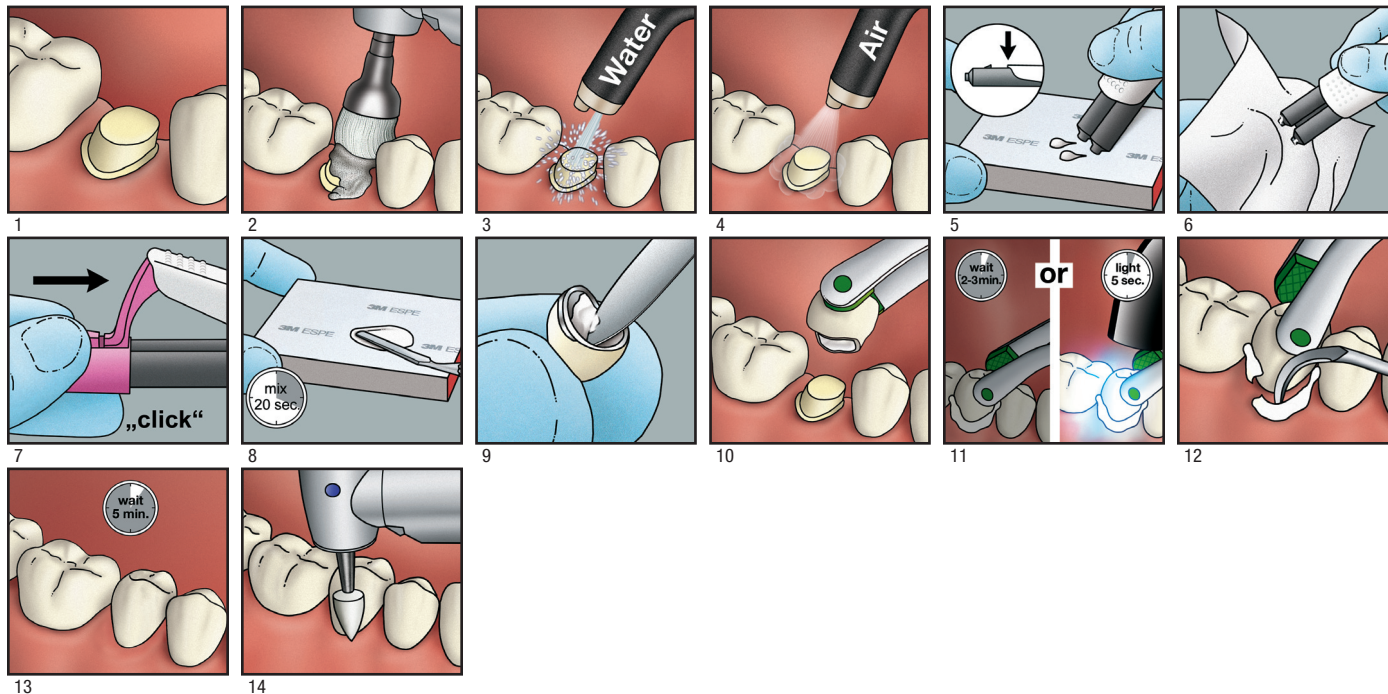


**RelyX™ Luting Plus**

Resin Modified Glass Ionomer Cement

For Metal, All-alumina and All-zirconia Ceramic Indications



**3M ESPE**  
**Dental Products**  
 2510 Conway Avenue  
 St. Paul, MN 55144-1000 USA



**3M Deutschland GmbH**  
 Dental Products  
 Carl-Schurz-Strasse 1  
 D-41453 Neuss, Germany

[www.3MESPE.com](http://www.3MESPE.com)

**3M ESPE Customer Care/MSDS Information:**  
 U.S.A. 1-800-634-2249 and Canada 1-888-363-3685

3M, ESPE and Ketac are trademarks of 3M or 3M Deutschland GmbH.  
 Used under license in Canada. © 3M 2012. All rights reserved.

