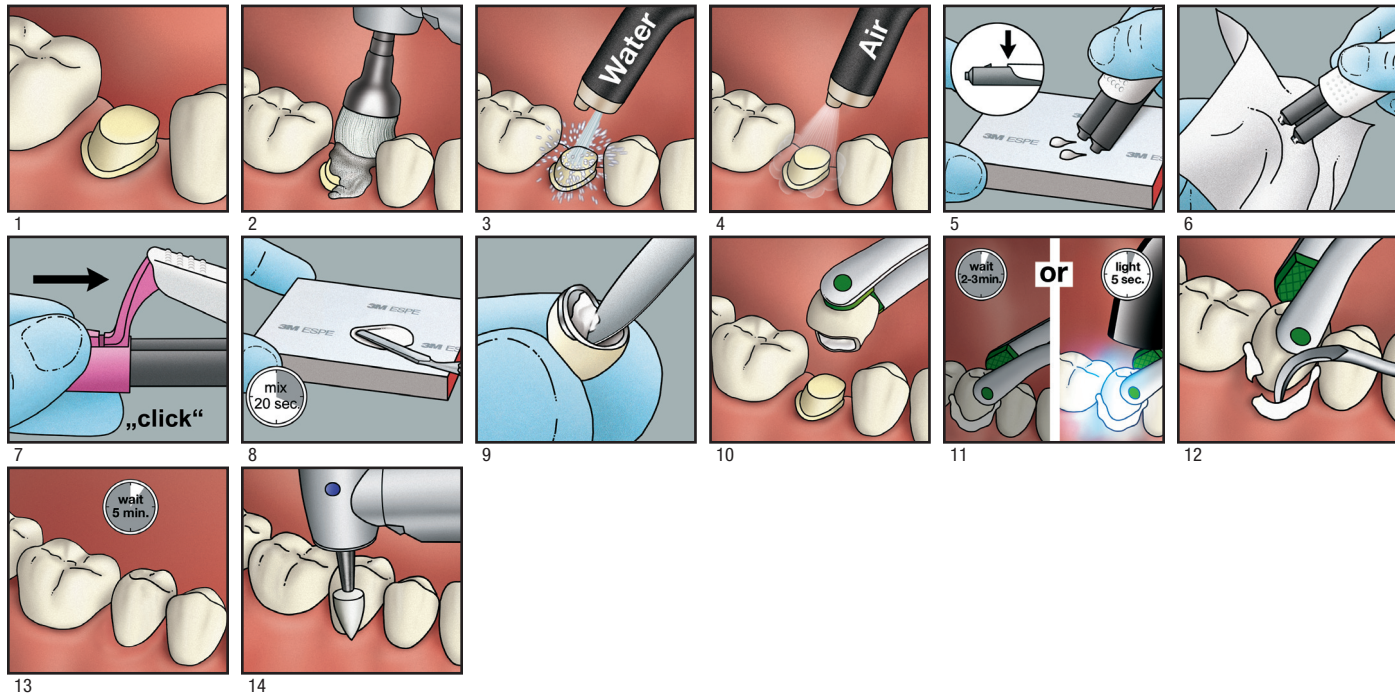


RelyX™ Luting Plus

Resin Modified Glass Ionomer Cement

For Metal, All-alumina and All-zirconia Ceramic Indications



3M ESPE
Dental Products
 2510 Conway Avenue
 St. Paul, MN 55144-1000 USA



3M Deutschland GmbH
 Dental Products
 Carl-Schurz-Strasse 1
 D-41453 Neuss, Germany

www.3MESPE.com

3M ESPE Customer Care/MSDS Information:
 U.S.A. 1-800-634-2249 and Canada 1-888-363-3685

3M, ESPE and Ketac are trademarks of 3M or 3M Deutschland GmbH.
 Used under license in Canada. © 3M 2012. All rights reserved.

