

# Metal and Zirconia Crown Cementation

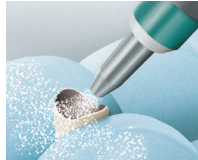


## Simple Steps for 3M™ RelyX™ Luting Plus Resin Modified Glass Ionomer Cement

### Prepare restoration.

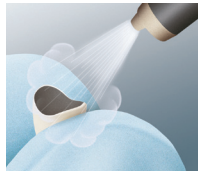
#### Step 1

Sandblast surfaces to be cemented with 30 or 50 micron aluminum oxide at a pressure of 2 Bar (30 psi) to create a matte surface appearance.



#### Step 2

Clean with alcohol and air dry with oil-free air.



### Pretreat tooth.

#### Step 3

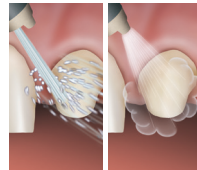
Remove provisional restoration. Mechanically clean prepared tooth (e.g. with pumice paste).



**⚠ Tip:** Make sure any residue (temporary cement, desensitizers, astringents, disinfectants, etc.) is completely removed. Do not use H<sub>2</sub>O<sub>2</sub>, EDTA or Na<sub>2</sub>CO<sub>3</sub>.

#### Step 4

Rinse and lightly dry. Leave tooth surface moist. Do not over dry the tooth. Over drying can lead to post operative sensitivity.



### Apply cement.



#### Step 5 — For Clicker Delivery:

- Dispense a small amount of cement to ensure even dispensing
- Discard this material
- Apply two clicks of the cement pastes onto a mixpad
- Hand mix with a spatula until a homogeneous mix is obtained
- Wipe the Clicker barrels independently to avoid contamination of the material and premature setting
- Ensure that the cap is put firmly in place (clicking sound).

**⚠ Tip:** For a crown, typically two clicks would be needed.

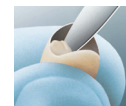
#### Step 5 For Automix Delivery:

Dispense a small amount of cement onto the mixpad to ensure a perfect mix. Discard this material.

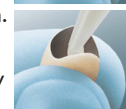


#### Step 6 For Clicker Delivery:

Apply a thin layer of cement to the inside surface of the restoration.



**For Automix Delivery:** Dispense cement directly into the crown.



### Seat and Clean-up.

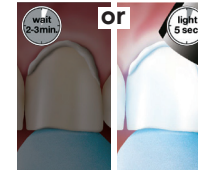
#### Step 7

Firmly seat the crown with finger pressure.



#### Step 8

Excess cement can be removed 2 minutes after seating the restoration or after tack light curing 5 seconds per surface.



#### Step 9

Remove excess cement with a scaler while holding the crown in place.



#### Step 10

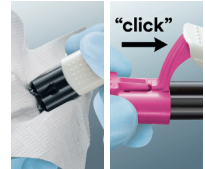
Set time is 5 minutes after placement in the mouth. Finish restoration and adjust occlusion.



### Storage.

#### Step 11 For Clicker Delivery:

- Wipe the Clicker barrels independently to avoid contamination of the material and premature setting
- Ensure that the cap is put firmly in place (clicking sound).



#### For Automix Delivery:

Store with original sealing cap in place. NOTE: **DO NOT** store with used mix tip.

**⚠ Tip:** To prevent premature curing and drying of the paste, be sure to follow recommended cleaning and storage steps. Ideal storage is normal ambient room temperature of 18–24°C.

Illustrations show PFM crown only.

For further reference, please refer to Instructions for Use, Step-by-Step Card and Frequently Asked Questions.

3M Oral Care, 2510 Conway Avenue, St. Paul, MN 55144-1000 USA Phone: 1-800-634-2249 Web: 3M.com/dentalcements

3M, Clicker, ESPE and RelyX are trademarks of 3M or 3M Deutschland GmbH. Used under license in Canada. © 3M 2018. All rights reserved. 70-2013-0800-7 (REV 4/2018)

# Zirconia Crown Cementation



Simple Steps for 3M™ RelyX™ Unicem 2 Self-Adhesive Resin Cement

## Prepare restoration.

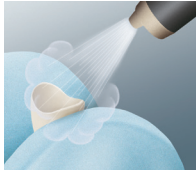
### Step 1

Sandblast surfaces to be cemented with 30 or 50 micron aluminum oxide at a pressure of 2 Bar (30 psi) to create a matte surface appearance.



### Step 2

Clean with alcohol and air dry with oil-free air.



**Tip:** If sandblasting is done in laboratory before try-in, clean saliva contamination with NaOCl (ca. 5%) and rinse with water. Do not use phosphoric acid for cleaning.

## Pretreat tooth.

### Step 3

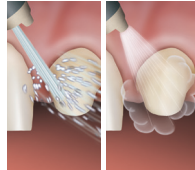
Remove provisional restoration. Mechanically clean prepared tooth (e.g. with pumice paste).



**Tip:** Make sure any residue (temporary cement, desensitizers, astringents, disinfectants, etc.) is completely removed. Do not use H<sub>2</sub>O<sub>2</sub>, EDTA or NaHCO<sub>3</sub>.

### Step 4

Rinse and lightly dry. Leave tooth surface moist. Do not over dry the tooth. Over drying can lead to post operative sensitivity.



## Apply cement.



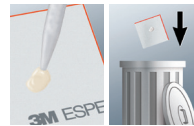
### Step 5 — For Clicker Delivery:

- Dispense a small amount of cement to ensure even dispensing
- Discard this material
- Apply two clicks of the cement pastes onto a mixpad
- Hand mix with a spatula until a homogeneous mix is obtained
- Wipe the Clicker barrels independently to avoid contamination of the material and premature setting
- Ensure that the cap is put firmly in place (clicking sound).

**Tip:** For a crown, typically two clicks would be needed.

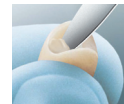
### Step 5 For Automix Delivery:

Dispense a small amount of cement onto the mixpad to ensure a perfect mix. Discard this material.

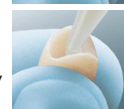


### Step 6

**For Clicker Delivery:** Use the mixing spatula to apply the cement into the crown.



**For Automix Delivery:** Dispense cement directly into the crown.



## Seat and Clean-up.

### Step 7

Firmly seat the crown with finger pressure.



### Step 8

Tack cure for 1–2 seconds.



### Step 9

Remove excess cement with a scaler while holding the crown in place.



**Tip:** Do not exceed recommended tack cure time, otherwise clean-up will be difficult. For a controlled curing time, use 3M™ Elipar™ S10 LED Curing Light or 3M™ Elipar™ DeepCure-S LED Curing Light tack curing function.

## Final cure.

### Step 10

Light cure for 20 seconds per surface or wait 6 minutes from start of mix for dark cure. Finish and polish as needed.



### Finished crown.



For further reference, please refer to Instructions for Use, Step-by-Step Card and Frequently Asked Questions.

3M Oral Care, 2510 Conway Avenue, St. Paul, MN 55144-1000 USA Phone: 1-800-634-2249 Web: 3M.com/dentalcements

3M, Clicker, Elipar, ESPE and RelyX are trademarks of 3M or 3M Deutschland GmbH. Used under license in Canada. © 3M 2018. All rights reserved. 70-2013-0800-7 (REV 4/2018)