

# The edge you need for the productivity you want.

## Lava™ Ultimate

### CAD/CAM Restorative for CEREC®

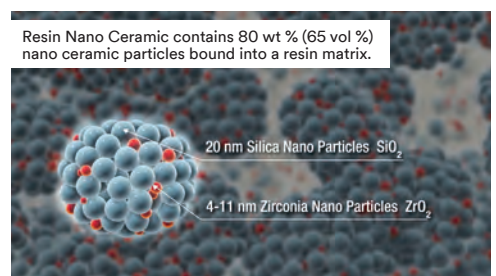
The world's first resin nano ceramic material, Lava™ Ultimate Restorative is designed for **precision**, **speed** and single-appointment **efficiency**. Because the resin nano ceramic material is less brittle than glass ceramic, it **resists chipping and cracking when milled**. Dentists can achieve **better edge quality** and smooth margins for a brilliant restoration that feels as natural as it looks. There's **no post firing**, so the **restoration is finished faster**. Simply polish to a high-quality luster. It's an advance that will improve your productivity and create a better experience for your patients.



### The benefits of resin nano ceramic material

Nanotechnology and proprietary curing treatment create a unique hybrid material that offers the benefits of both glass ceramic and resin materials:

- High flexural strength adds durability to posterior restorations.
- Excellent wear resistance.
- Less wear to opposing enamel than glass ceramics.
- Brilliant and long-lasting polish.



### The cementation system

Lava Ultimate restorations must be bonded with an adhesive resin cement. 3M ESPE Dental recommends RelyX™ Ultimate Adhesive Resin Cement with Scotchbond™ Universal Adhesive — primer and adhesive in one bottle. For step-by-step instructions, download a free copy of the Step by Step guide at [3MESPE.com/LavaUltimateTips](http://3MESPE.com/LavaUltimateTips).



## Chairside steps to give you brilliant results

From onlays and inlays to veneers, Lava™ Ultimate Restorative is engineered specifically to help you produce efficient chairside restorations. And create results your patients will love.

### Onlay clinical case study



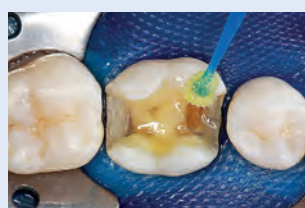
1. Initial situation



2. Tooth preparation



3. Selective etch



4. Bond with Scotchbond™ Universal Adhesive and RelyX™ Ultimate Adhesive Resin Cement



5. Light cure each surface



6. Final restoration



Lava™ Ultimate Restorative is indicated for:

- Onlays
- Inlays
- Veneers

3M ESPE  
Lava™ Ultimate  
CAD/CAM Restorative

For Step by Step  
Guide visit:  
[www.3MESPE.com/LavaUltimateTips](http://www.3MESPE.com/LavaUltimateTips)

Our Step by Step Guide for Lava Ultimate Restorative can be found online at [3MESPE.com/LavaUltimateTips](http://3MESPE.com/LavaUltimateTips).

## Ordering Information

| Item # | Product Information  |
|--------|--|
| 2914SK | Lava™ Ultimate Restorative—Introductory Kit for CEREC®<br>Kit includes: 5 blocks, size 14L: Shades A1-LT, A2-HT, A2-LT, A3-HT, A3-LT;<br>5 blocks, size 12: Shades A1-LT, A2-HT, A2-LT, A3-HT, A3-LT |

### Lava™ Ultimate Restorative for CEREC® – REFILLS

| Shade  | Low Translucency    |                      | High Translucency   |                      |
|--------|---------------------|----------------------|---------------------|----------------------|
|        | Size 12<br>Item No. | Size 14L<br>Item No. | Size 12<br>Item No. | Size 14L<br>Item No. |
| A1     | 2912A1-LT           | 2914A1-LT            | 2912A1-HT           | 2914A1-HT            |
| A2     | 2912A2-LT           | 2914A2-LT            | 2912A2-HT           | 2914A2-HT            |
| A3     | 2912A3-LT           | 2914A3-LT            | 2912A3-HT           | 2914A3-HT            |
| A3.5   | 2912A3.5-LT         | 2914A3.5-LT          |                     |                      |
| B1     | 2912B1-LT           | 2914B1-LT            | 2912B1-HT           | 2914B1-HT            |
| C2     | 2912C2-LT           | 2914C2-LT            |                     |                      |
| D2     | 2912D2-LT           | 2914D2-LT            |                     |                      |
| BLEACH | 2912BL-LT           | 2914BL-LT            |                     |                      |



Each refill box contains 5 blocks of a single shade in size 12 or 14L.



3M Oral Care  
2510 Conway Avenue  
St. Paul, MN 55144-1000 USA

Phone 1-800-634-2249  
Web [3M.com/LavaUltimate](http://3M.com/LavaUltimate)

3M Canada  
Post Office Box 5757  
London, Ontario N6A 4T1  
Canada

Phone 1-888-363-3685

3M, ESPE, Lava, RelyX, and Scotchbond are trademarks of 3M or 3M Deutschland GmbH. Used under license in Canada. CEREC is not a trademark of 3M.

Please recycle. Printed in U.S.A. © 3M 2015.  
All rights reserved. 70-2013-0677-9 (REV 10/2015)