



# Filtek™

Universal Restorative

Your restorations.  
Your composite.  
Your day.

# Universally simpler.

3M™ Filtek™  
Universal Restorative



## 8 Designer shades. 1 Universal opacity. It doesn't get any simpler.

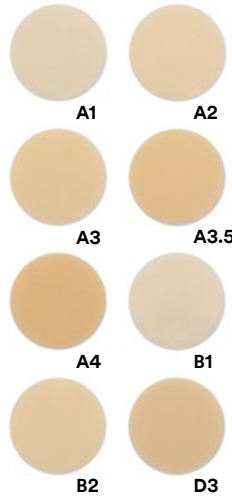
Efficiency is key to navigating a tight schedule. That's one reason dentists use a single-shade restoration for about 80% of their cases.\* Making those restorations easier is why we created 3M™ Filtek™ Universal Restorative.

### It starts with simplifying shade selection.

Just 8 designer shades plus an Extra White (XW) cover the 19 VITA classical and bleach shades.\* Plus, the shades have a universal opacity that meets most clinical needs.

- **NaturalMatch technology** (made up of nanofillers, proprietary low-stress monomers and pigments) enables one-shade esthetics to blend more naturally with dentition.
- **Fluorescent pigments** enhance the lifelike appearance.
- **3M filler technology** allows for increased radiopacity.

### Your 8 designer shades:



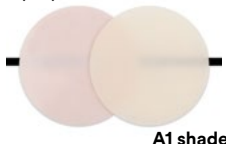
Enhancements like an Extra White (XW) and a Pink Opaquer (PO) help you deliver excellent esthetics in unique situations.

Create Extra White restorations to meet the expectations of patients who bleach.



Keep dark areas from diminishing esthetic results. A Pink Opaquer effectively masks metal and stained dentition.

Pink Opaquer (PO)



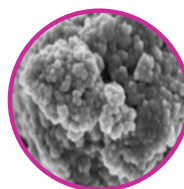
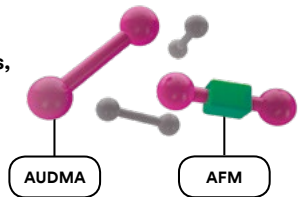
A1 shade

### A new class of universal composite

From the moment of cure, restorations are challenged by chewing, brushing and grinding. We raised the bar for durability by combining two proven proprietary dental technologies *for the first time* in a universal composite.

#### Low-stress monomer technologies

Pioneered in our bulk-fill composites, they help protect restorations from problems caused by shrinkage and shrinkage stress.



#### 3M's patented TRUE nanotechnology

Gives restorations excellent polish that lasts, as well as high strength and excellent wear resistance.

100K magnification of nanocluster. SEM photo courtesy of Dr. J. Perdigão, University of Minnesota.

\*3M Internal Data

## Key features

- **Simplified shade selection**—just 8 designer shades to cover most of your patients
- **Universal opacity** to blend more naturally
- **Extra White (XW)** for matching bleached teeth
- **Fluorescent pigments** to give restorations a lifelike appearance
- **Pink Opaquer** to easily mask dark areas
- **3M's nanotechnology** for easy polish that lasts
- **Proprietary low-stress monomers** for fracture resistance
- **Increased radiopacity** for easier identification at recall
- **Capsule warming**—3M™ Filtek™ Universal Restorative capsules can be safely warmed.\*

\*See Instructions for Use

## Indications

- Direct anterior and posterior restorations (including occlusal surfaces)
- Core buildups
- Splinting
- Indirect restorations including inlays, onlays and veneers

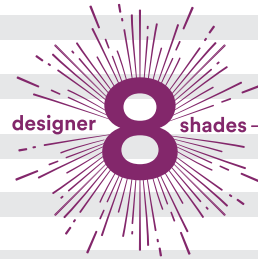


## Ordering Information

### 3M™ Filtek™ Universal Restorative

Item #	Product Information
6550CK	<b>3M™ Filtek™ Universal Restorative Essential Kit, Capsules</b> Kit includes: 80 – 0.2g capsules: 20 each of A1, A2, A3, A3.5; 10 – 0.2g capsules of PO; Technique Guide; Instructions for Use.
6555SK	<b>3M™ Filtek™ Universal Restorative Essential Kit, Syringe</b> Kit includes: 5 – 4g syringes: 1 each of A1, A2, A3, A3.5 and PO; Technique Guide; Instructions for Use.

Refill	Item #	Item #
<b>SHADES</b>	<b>SYRINGE</b>	<b>CAPSULE</b>
A1	6555A1	6550A1
A2	6555A2	6550A2
A3	6555A3	6550A3
A3.5	6555A3.5	6550A3.5
A4	6555A4	6550A4
B1	6555B1	6550B1
B2	6555B2	6550B2
D3	6555D3	6550D3
XW—Extra White	6555XW	6550XW
PO—Pink Opaquer	6555PO	6550PO
SHADE REFILLS	CAPSULES—includes 20 – 0.2g capsules	SYRINGES—includes 1 – 4g syringe
PINK OPAQUER (PO) REFILLS	CAPSULES—includes 10 – 0.2g capsules	SYRINGES—includes 1 – 4g syringe



All refills include a Technique Guide and Instructions for Use.

[www.3M.com/FiltekUniversal](http://www.3M.com/FiltekUniversal)



3M Oral Care  
2510 Conway Avenue  
St. Paul, MN 55144-1000 USA  
Phone 1-800-634-2249  
Web 3M.com/dental

3M Deutschland GmbH  
Location Seefeld  
3M ESPE • ESPE Platz  
82229 Seefeld • Germany  
Info3MESPE@mmm.com  
www.3MESPE.com

3M and Filtek are trademarks of 3M or 3M Deutschland GmbH. Used under license in Canada. Printed in USA. © 3M 2019. All rights reserved.