

3M

Filtek™

**Supreme Ultra
Universal Restorative**



**Dentists everywhere
love using it
anywhere.**



600 million reasons you can be confident using it anywhere.

Bring unsurpassed esthetics and outstanding strength to every restoration—anterior or posterior—with 3M™ Filtek™ Supreme Ultra Universal Restorative.

As you'd expect from the global leader in esthetic and restorative technologies, 3M's TRUE nanotechnology provides superior wear resistance and gloss retention ... so your restorations will last and look beautiful, too.

That's why dentists around the world have made it their composite of choice for **more than 600 million restorations*** ... and counting.



3M™ Filtek™ Supreme Ultra Universal Restorative

Simplify your practice with the composite that does it all.

Any place: anterior or posterior. Any class.



A versatile choice is a smart choice.

Unsurpassed esthetics

- Excellent polish retention
- Wide range of shades and opacities
- Natural-looking fluorescence

Simple to use

- Exceptional handling
- Natural-looking body shades for a simple, single-shade technique
- Capsules and syringes are color coded by opacity

Durable in anterior and posterior use

- Excellent wear resistance
- Outstanding strength
- High radiopacity

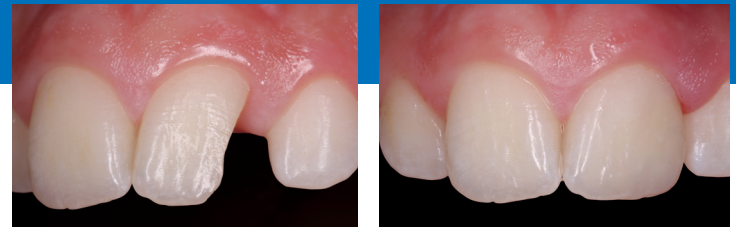
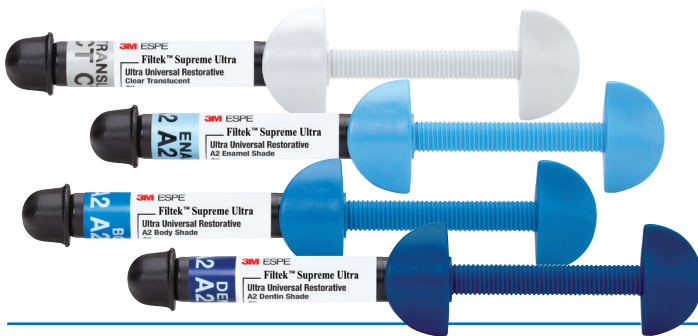
*3M™ Filtek™ Supreme Universal Restorative line

Always beautiful

When you want to elevate your artistry, here's your dream palette.

When it comes to beautiful, natural-looking results, there's nothing like 3M™ Filtek™ Supreme Ultra Universal Restorative. Whether you specialize in esthetic dentistry or create esthetic restorations in specific cases, we have your dream palette.

Our **36 beautiful shades and 4 opacities** allow you to match any patient's dentition and create restorations that are virtually undetectable using a multi-shade layering technique.

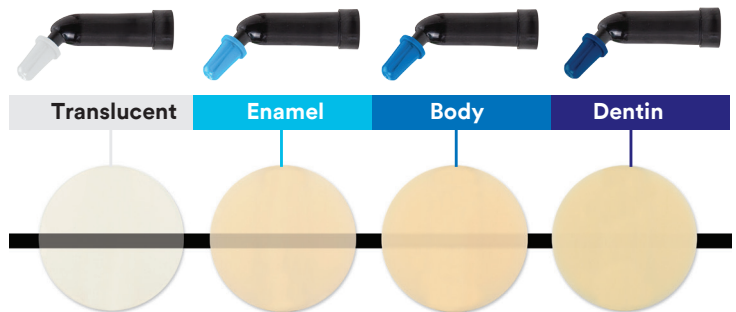


Anterior restoration created using three shades (A3D, A3.5B, A1E) of 3M™ Filtek™ Supreme Ultra Universal Restorative.

Photo courtesy of Dr. Gabriel Krastl, Department of Periodontology, Endodontics and Cariology, University of Basel, Switzerland.

Four Opacities

Translucent, Enamel, Body and Dentin designations refer to differences in opacity.



Syringes and capsules are color coded by opacity—Translucent, Enamel, Body and Dentin—and bold lettering makes shades easy to identify.

Unsurpassed polish retention—a difference you can see.

The initial gloss of most restoratives can be very impressive, but you want a polish that lasts. Thanks to 3M's TRUE nanofiller technology, Filtek Supreme Ultra restorative polishes easily and retains its natural gloss better than other composites—even a microfill.



Polish you can see. Side-by-side photos compare the polish retention of leading restoratives to that of 3M™ Filtek™ Supreme Ultra Universal Restorative after 6,000 cycles of simulated toothbrushing.

Beautifully simple

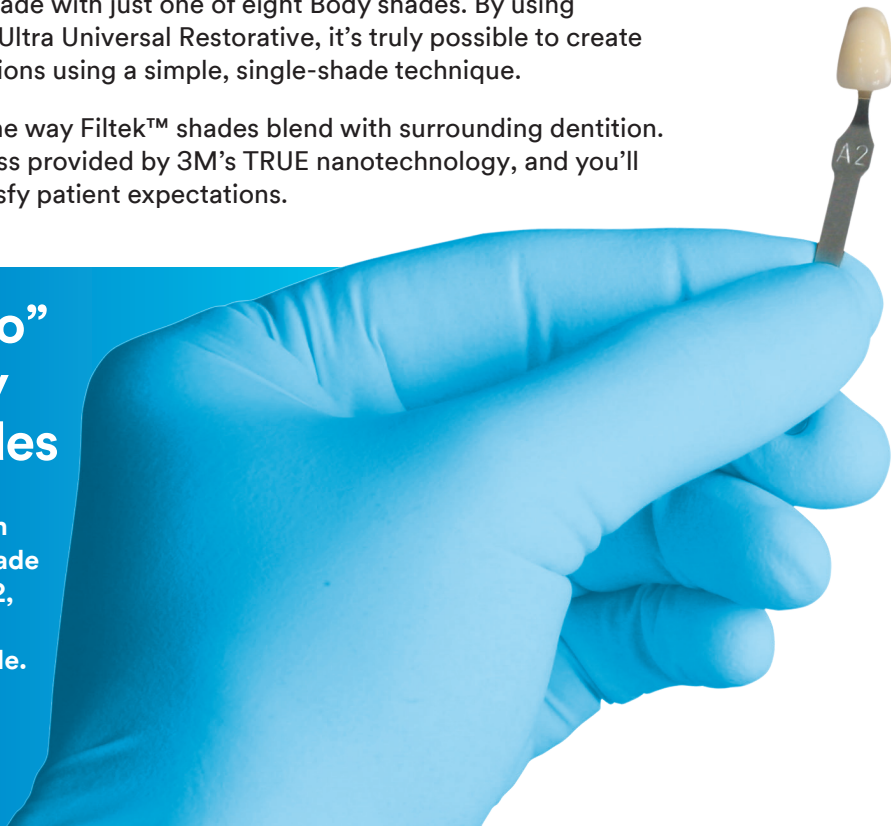
When you want a simple solution, you'll love this.

Most restorations are made with just one of eight Body shades. By using 3M™ Filtek™ Supreme Ultra Universal Restorative, it's truly possible to create natural-looking restorations using a simple, single-shade technique.

Dentists say they love the way Filtek™ shades blend with surrounding dentition. Add to that the high gloss provided by 3M's TRUE nanotechnology, and you'll find it really easy to satisfy patient expectations.

8 "Go-to" Body Shades

Filtek™ shades match the VITA classical Shade Guide. An A2 is an A2, so esthetics are beautifully predictable.



Dentists rate the handling as "ideal."

It's easier to achieve the restorative result you want when the composite handles well. For example, the improved handling of our Translucent shades makes it easier to create lifelike incisal edges.

All of our shades offer excellent handling. In fact, in a field study,* dentists rated Filtek Supreme Ultra restorative as "ideal" on viscosity, stickiness, flow and ability to hold its shape.

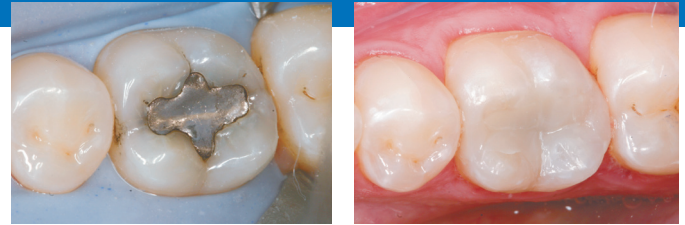
*3M internal data



Simply durable ... anywhere

Beautiful ... yes. And it's strong enough to use anywhere.

Think how much more efficient your day would be if you didn't have to decide which composite to use in each clinical situation. Our TRUE nanotechnology gives 3M™ Filtek™ Supreme Ultra Universal Restorative remarkable strength for anterior and posterior use.



Amalgam filling replaced by 3M™ Filtek™ Supreme Ultra Universal Restorative in a posterior restoration.

Photo courtesy of Dr. Grant Chyz.

Excellent wear resistance

The lower the wear rate of a composite material, the better its wear resistance. In an in vitro 3-body wear test, Filtek Supreme Ultra restorative had the lowest wear rate of all leading composites tested.

Source: 3M internal data



3-Body Wear

Normalized wear rate

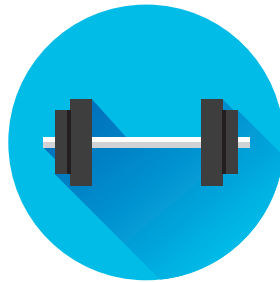
3M™ Filtek™ Supreme Ultra Universal Restorative.....	1.0
Grandio®SO	1.4
EsthetX® HD.....	1.6
TPH Spectra® HV	2.6
Tetric EvoCeram®.....	3.4
Herculite™ Ultra	2.5

Over 200,000 cycles

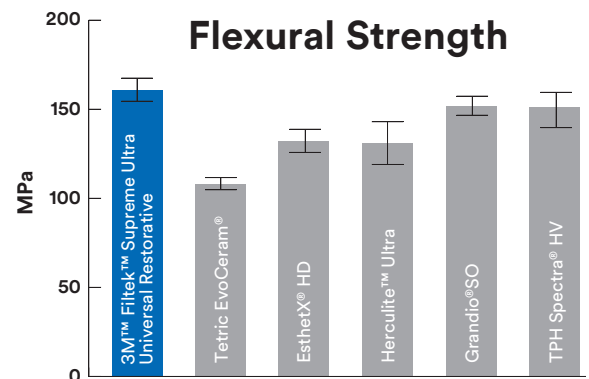
Outstanding strength

In a test comparing leading dental composites, the flexural strength of Filtek Supreme Ultra restorative proved better than that of EsthetX® HD, Herculite™ Ultra and Tetric EvoCeram®, and comparable to other composites tested.

Source: 3M internal data



Flexural Strength



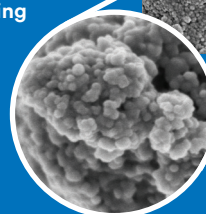
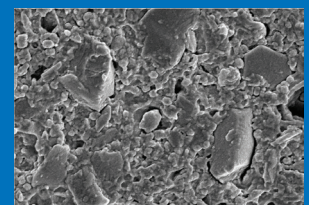
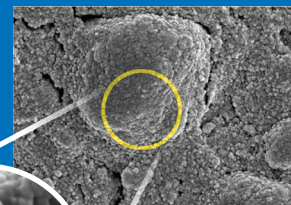
3M's TRUE nanofiller technology leads to outstanding polish and strength.

The significant distinction between 3M™ Filtek™ Supreme Ultra Universal Restorative and micro- and nanohybrids is that our nanoparticles are uniquely formed in the nano size range and are not the result of a grinding process. Some nanoparticles are fused into nanoclusters, which shear at a rate similar to the wear of the surrounding resin matrix during abrasion, such as toothbrush abrasion. That's why restorations made from Filtek Supreme Ultra restorative maintain a smooth surface gloss for superb esthetics.

The nanoclusters have a similar size range as fillers found in the hybrid composites and provide for high filler loading. This results in excellent physical properties and wear resistance that are ideal for posterior restorations.

3M™ Filtek™ Supreme Ultra Universal Restorative nanocluster

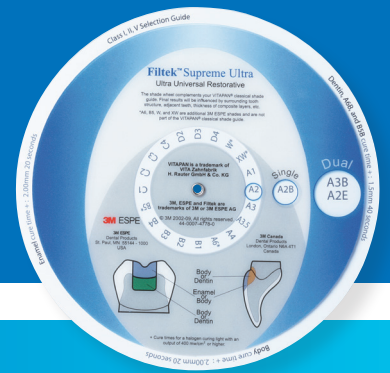
Leading competitive composite



100K magnification of nanocluster

SEM photos courtesy of Dr. J. Perdigo, University of Minnesota.

You may already know the benefits of working with 3M™ Filtek™ Supreme Ultra Universal Restorative. What you may not know is how easy it is to move from a single-shade to a dual-shade technique. The 3M™ Shade Selector Wheel simplifies the selection process and serves as a guide for placing one to four shades of composite. It is included in every dual-shade kit and professional kit.



Ordering Information

Although Filtek Supreme Ultra restorative is available in 36 shades and opacities, the **8 Body shades** highlighted below will meet the majority of your needs for creating natural-looking, single-shade restorations.

Item #	Product Information
6029SU	3M™ Filtek™ Supreme Ultra Universal Restorative Single Opacity Trial Kit—Capsule Kit includes: 20 – 0.2g capsules: 10 each of Body shades A1 and A2; 1 – 1.5ml 3M™ Scotchbond™ Universal Adhesive Vial; 1 – 3ml 3M™ Scotchbond™ Universal Etchant Syringe; Restorative Dispenser; Shade Selection Wheel; Technique Guides; Instructions for Use
6028SU	3M™ Filtek™ Supreme Ultra Universal Restorative Single Opacity Trial Kit—Syringe Kit includes: 1 – 4g syringe of Body shades A2 and A3; 1 – 1.5ml 3M™ Scotchbond™ Universal Adhesive Vial; 1 – 3ml 3M™ Scotchbond™ Universal Etchant Syringe; Shade Selection Wheel; Technique Guides; Instructions for Use
6029DU	3M™ Filtek™ Supreme Ultra Universal Restorative Dual Opacity Trial Kit—Capsule Kit includes: 40 – 0.2g capsules: 10 each of Dentin shades A3 and A4 and Enamel shades A2 and A3; 1 – 1.5ml 3M™ Scotchbond™ Universal Adhesive Vial; 1 – 3ml 3M™ Scotchbond™ Universal Etchant Syringe; Restorative Dispenser; Shade Selection Wheel; Technique Guides; Instructions for Use
6028DU	3M™ Filtek™ Supreme Ultra Universal Restorative Dual Opacity Trial Kit—Syringe Kit includes: 1 – 4g syringe of Dentin shades A3 and A4 and Enamel shades A2 and A3; 1 – 1.5ml 3M™ Scotchbond™ Universal Adhesive Vial; 1 – 3ml 3M™ Scotchbond™ Universal Etchant Syringe; Shade Selection Wheel; Technique Guides; Instructions for Use
6029M	3M™ Filtek™ Supreme Ultra Universal Restorative Master's Kit—Capsule Kit includes: 129 – 0.2g capsules: 3 each of A1D, A2D, A3D, A4D, B3D, C4D, WD; 6 each of A1B, A2B, A3B, A3.5B, A4B, B1B, B2B, C2B; 3 each of A6B, B3B, B5B, C1B, C3B, D2B, D3B, WB, XWB; 6 of A2E; 3 each of A1E, A3E, B1E, B2E, D2E, WE, XWE; 3 each of Translucent shades AT, CT; Shade Selection Wheel; Technique Guides; Instructions for Use

REFILLS—3M™ Filtek™ Supreme Ultra Universal Restorative

Refill	Item #	Item #
BODY SHADES		
A1B	6028A1B	6029A1B
A2B	6028A2B	6029A2B
A3B	6028A3B	6029A3B
A3.5B	6028A3.5B	6029A3.5B
B1B	6028B1B	6029B1B
B2B	6028B2B	6029B2B
C1B	6028C1B	6029C1B
C2B	6028C2B	6029C2B
A4B	6028A4B	6029A4B
A6B	6028A6B	6029A6B
B3B	6028B3B	6029B3B
B5B	6028B5B	6029B5B
C3B	6028C3B	6029C3B
D2B	6028D2B	6029D2B
D3B	6028D3B	6029D3B
White	6028WB	6029WB
Extra White	6028XWB	6029XWB
DENTIN SHADES		
A1D	6028A1D	6029A1D
A2D	6028A2D	6029A2D
A3D	6028A3D	6029A3D
A4D	6028A4D	6029A4D
B3D	6028B3D	6029B3D
C4D	6028C4D	6029C4D
White	6028WD	6029WD
ENAMEL SHADES		
A1E	6028A1E	6029A1E
A2E	6028A2E	6029A2E
A3E	6028A3E	6029A3E
B1E	6028B1E	6029B1E
B2E	6028B2E	6029B2E
D2E	6028D2E	6029D2E
White	6028WE	6029WE
Extra White	6028XWE	6029XWE
TRANSLUCENT SHADES		
Clear	6028CT	6029CT
Blue	6028BT	6029BT
Gray	6028GT	6029GT
Amber	6028AT	6029AT

The 8 "Go-To" Body Shades

www.3M.com/FiltekSupremeUltra



3M Oral Care
2510 Conway Avenue
St. Paul, MN 55144-1000 USA
Phone 1-800-634-2249
Web 3M.com/dental

3M Canada
Post Office Box 5757
London, Ontario N6A 4T1
Canada
Phone 1-888-363-3685

SYRINGE SHADE REFILLS: Include 1 – 4g syringe, Instructions For Use

CAPSULE SHADE REFILLS: Dentin, Enamel and Translucent shade refills include 10 – 0.2g capsules; Body Shade Refills include 20 – 0.2g capsules; Instructions for Use

3M and Filtek are trademarks of 3M or 3M Deutschland GmbH. Used under license in Canada. Printed in USA. © 3M 2017. All rights reserved. All other trademarks are not trademarks of 3M.
70-2013-0840-3