

Your restorations.
Your composite.
Your day.

Universally simpler.

3M™ Filtek™ Universal Restorative



8 designer shades. 1 universal opacity. It doesn't get any simpler.

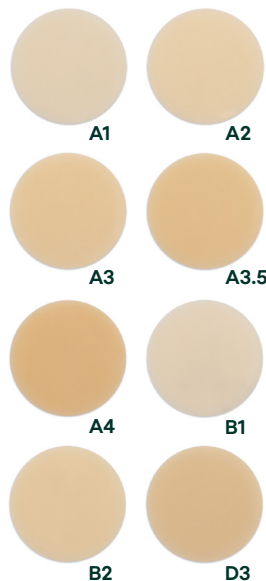
Efficiency is key to navigating a tight schedule. That's one reason dentists use a single-shade restoration for about 80% of their cases.* Making those restorations easier is why we created Filtek Universal Restorative.

It starts with simplifying shade selection

Just 8 designer shades plus an Extra White (XW) cover the 19 VITA classical and bleach shades.* Plus, the shades have a universal opacity that meets most clinical needs.

- **NaturalMatch technology** (made up of nanofillers, proprietary low-stress monomers and pigments) enables one-shade esthetics to blend more naturally with dentition.
- **Fluorescent pigments** enhance the lifelike appearance.
- **Solventum filler technology** allows for increased radiopacity.

Your 8 designer shades:

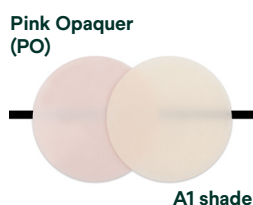


Enhancements like an Extra White (XW) and a Pink Opaquer (PO) help you deliver excellent esthetics in unique situations

Create Extra White restorations to meet the expectations of patients who bleach.



Keep dark areas from diminishing esthetic results. A Pink Opaquer effectively masks metal and stained dentition.



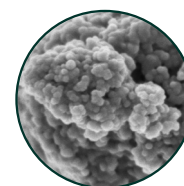
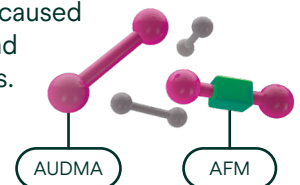
*Internal data

A new class of universal composite

From the moment of cure, restorations are challenged by chewing, brushing and grinding. We raised the bar for durability by combining two proven proprietary dental technologies *for the first time* in a universal composite.

Low-stress monomer technologies

Pioneered in our bulk-fill composites, they help protect restorations from problems caused by shrinkage and shrinkage stress.



Solventum's patented TRUE nanotechnology

Gives restorations excellent polish that lasts, as well as high strength and excellent wear resistance.

100K magnification of nanocluster. SEM photo courtesy of Dr. J. Perdigão, University of Minnesota

Key features

- **Simplified shade selection**—just 8 designer shades to cover most of your patients
- **Universal opacity** to blend more naturally
- **Extra White (XW)** for matching bleached teeth
- **Fluorescent pigments** to give restorations a lifelike appearance
- **Pink Opaquer** to easily mask dark areas
- **Solventum’s nanotechnology** for easy polish that lasts
- **Proprietary low-stress monomers** for fracture resistance
- **Increased radiopacity** for easier identification at recall
- **Capsule warming**—3M™ Filtek™ Universal Restorative capsules can be safely warmed*

*See Instructions for Use

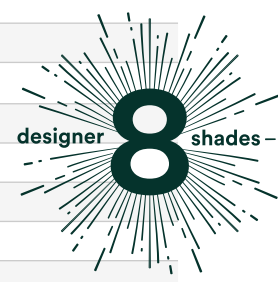
Indications

- Direct anterior and posterior restorations (including occlusal surfaces)
- Core buildups
- Splinting
- Indirect restorations including inlays, onlays and veneers



Ordering information

| 3M™ Filtek™ Universal Restorative | | |
|-----------------------------------|--|-------------------------------------|
| Item no. | Product information | |
| 6550CK | 3M™ Filtek™ Universal Restorative Essential Kit, Capsules Kit includes: 80 – 0.2g capsules: 20 each of A1, A2, A3, A3.5; 10 – 0.2g capsules of PO; Technique Guide; Instructions for Use | |
| 6555SK | 3M™ Filtek™ Universal Restorative Essential Kit, Syringes Kit includes: 5 – 4g syringes: 1 each of A1, A2, A3, A3.5 and PO; Technique Guide; Instructions for Use | |
| Refill shades | Syringe includes 1 – 4g syringe | Capsule includes 20 – 0.2g capsules |
| A1 | 6555A1 | 6550A1 |
| A2 | 6555A2 | 6550A2 |
| A3 | 6555A3 | 6550A3 |
| A3.5 | 6555A3.5 | 6550A3.5 |
| A4 | 6555A4 | 6550A4 |
| B1 | 6555B1 | 6550B1 |
| B2 | 6555B2 | 6550B2 |
| D3 | 6555D3 | 6550D3 |
| XW—Extra White Bleach | 6555XW | 6550XW |
| PO—Pink Opaquer | 6555PO | |



All refills include a Technique Guide and Instructions for Use



Solventum Dental Solutions
1-800-634-2249
Solventum.com

© Solventum 2026. Solventum, the S logo and Filtek are trademarks of Solventum or its affiliates. 3M and the 3M logo are trademarks of 3M.