

**Case Study:** 3M™ Clarity™ Aligners

**Correction of severe deep bite with combination treatment.**

**Age:** 47

**Chief concern:** My dentist says I have a really deep bite

**Case diagnostics:** Class I, 100% deep bite, mild upper spacing, mild lower crowding

**Upper:** Total number of aligners: 37  
3M™ Clarity™ Aligners Force upper arch only  
Initial Tx Design – stages 1-21 (21 aligners)  
Refinement 1 – stages 22-29 (8 aligners)  
Refinement 2 – stages 30-37 (8 aligners)

**Lower:** Mandibular wire sequence: 014 NiTi, 018 Reverse Curve NiTi, 16×22 NiTi, 19×25 NiTi, 19×25 SS. After 11 months of treatment added the LL7, rebracket the LR2, drop back to 018 NiTi, then same wire sequence as before.

**Wear interval:** Weekly

**Treatment time:** 15 months

**Case courtesy of:**  
Dr. Justin Hughes  
Alexandria, VA – USA

**Initial**

**Final**

**Profile at rest**



**Face at rest**



**Face smiling**



**Initial**

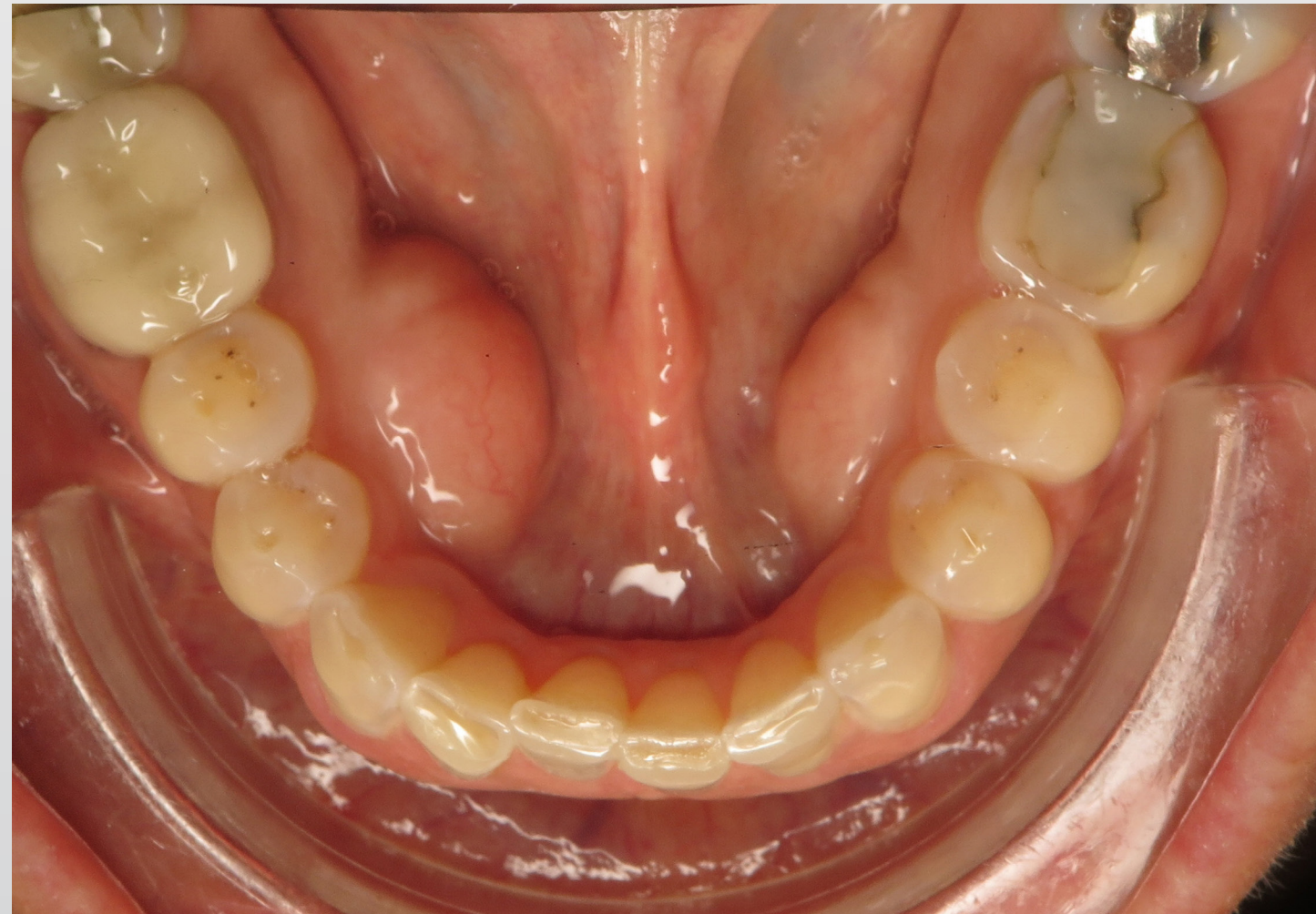
**Progress - 7 months**

**Final**

**Occlusal –  
maxillary**



**Occlusal –  
mandibular**



**Initial**

**Progress - 7 months**

**Final**

**Retracted  
buccal - right**



**Retracted  
anterior  
biting**



**Retracted  
buccal - left**



Panoramic radiograph

Cephalometric radiograph

Initial



Final



## **Tx Design Video**

Treatment Plan  
Attachment Strategy  
Key Movements  
Summary of Final Results

**Best Fit Overlay**

# Ready to learn more?

