

3M Science.
Applied to Life.™



Confidence for you.
Comfort for your patient.

Clinpro™
Glycine Prophy Powder



Comfortable cleaning for your patients.

You take special care with your preventive measures to ensure your patients' comfort and continued oral health. Now there's a way to enhance your prophylaxis procedure and advance their care.

Clinpro™ Glycine Prophylaxis Powder from 3M is a gentle prophylaxis powder that has the longest clinical history of glycine air-polishing powders—used clinically since 2001.

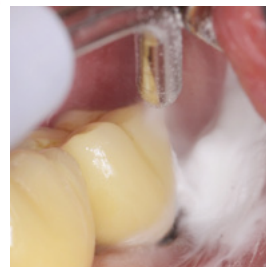
Clinpro™ Glycine Prophylaxis Powder

Benefits for you and for your patients:

- For supra- and subgingival plaque biofilm removal
- Low abrasiveness on dentin, root surfaces and restorations
- Proven to effectively remove biofilm in periodontal pockets
- Removes light to moderate extrinsic stains
- Gentle on restorations, orthodontic brackets, implants and sealants
- Fast and easy procedure
- Pleasant tasting
- Can be used in commercially available air-polishing equipment
- Effective for areas difficult to reach with paste



Around orthodontic brackets

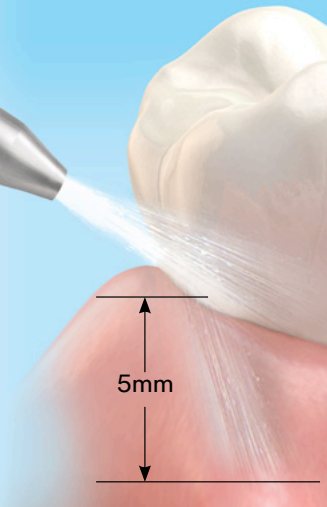


On implants and restorations



Around gingival margins

Subgingival plaque biofilm removal by spraying Clinpro™ Glycine Prophylaxis Powder along the gingival margin with a 30° to 60° angle in a steady motion to facilitate subgingival cleaning up to 5mm pocket depth.



Unlike conventional air-polishing powders such as sodium bicarbonate, Clinpro glycine prophylaxis powder is made with soft and gentle water-soluble glycine technology, for a thorough but gentle cleaning—even subgingivally. That means:

- A fast and comfortable cleaning for your patients and confidence for you
- Safe removal of biofilm from soft root surfaces, dental restorations, implants and around orthodontic brackets
- Gentler on dental tissues than conventional procedures using currettes and scalers

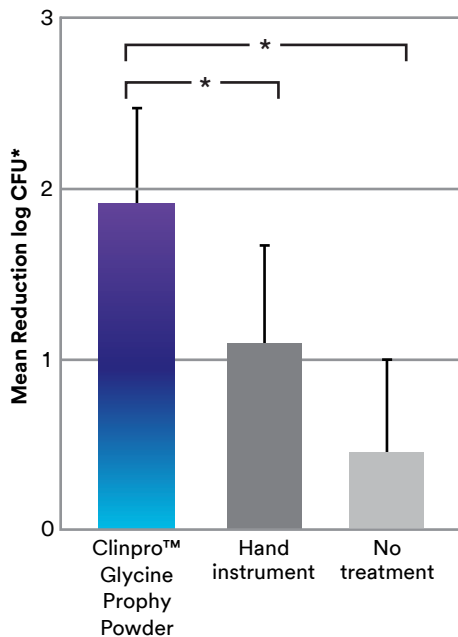
Fast and effective biofilm removal for you.

Clinpro™ Glycine Prophy Powder is indicated for the removal of biofilm on supra- and subgingival tooth surfaces—during routine professional tooth cleaning and for supportive maintenance in periodontitis and peri-implant disease therapy.

The gentle air-polishing procedure with Clinpro glycine prophy powder results in a decrease in pocket depth, and is clinically proven to remove biofilm in 3–5mm periodontal pockets as effectively as hand instruments.

Proof it works

Reduction of Bacteria
(n = 23 Patients)



More Gentle, Less Abrasive on Dental Surfaces

Treatment Type	Dentin Surface		Composite Surface	
	Before	After	Before	After
Clinpro™ Glycine Prophy Powder				
Curette				
Ultrasonic Scaler				
Sodium Bicarbonate Powder <small>(Sodium bicarbonate is not indicated for subgingival use)</small>				

Microscopic images showing surface before and after treatment (SEM 500x magnification)

Leading the way in preventive dentistry



For gentle supra-
and subgingival
cleaning



With proven, innovative products, 3M supports your prophylaxis procedure from start to finish—helping you provide the ultimate in patient comfort and care.

	Clinpro™ Glycine Prophy Powder	Conventional Sodium Bicarbonate Powders	Conventional Prophy Paste
Used to remove subgingival plaque biofilm up to 5mm pocket depth	X		
Used to remove supragingival plaque biofilm	X	X	X
Made with less abrasive glycine technology	X		
Safe on restorations, implants, orthodontic brackets and sealants	X		X
Water-soluble	X	X	X
Pleasant, non-salty taste	X		X
Can be used for patients with sodium restrictions	X		X
Removes light to moderate extrinsic stains	X	X	X
Removes heavy discoloration		X	
Used for supportive maintenance in periodontitis therapy	X		
Used for supportive maintenance for peri-implant therapy	X		



Ordering Information

Item #	Product Information
67008	Clinpro™ Glycine Prophy Powder: 2 bottles – 5.6 oz/160 grams each
12616	C&P Powder: 10 oz bottle

Clinpro™ prophylaxis solutions help your patients, and you, achieve success.
Make 3M in-office and at-home preventive products part of your patient care protocol.

www.3M.com/ProphyPowder



3M Oral Care
2510 Conway Avenue
St. Paul, MN 55144-1000 USA
Phone 1-800-634-2249
Web 3M.com/dental

3M Canada
Post Office Box 5757
London, Ontario N6A 4T1
Canada
Phone 1-888-363-3685

3M, ESPE and Clinpro are trademarks of 3M or 3M Deutschland GmbH. Used under license in Canada. Printed in USA. © 3M 2016. All rights reserved. 70-2013-0760-3