

# **ADAPTIC TOUCH™**

NON-ADHERING SILICONE DRESSING

## **All you could wish for in a silicone wound contact layer**

Comfort Performance  
Affordability

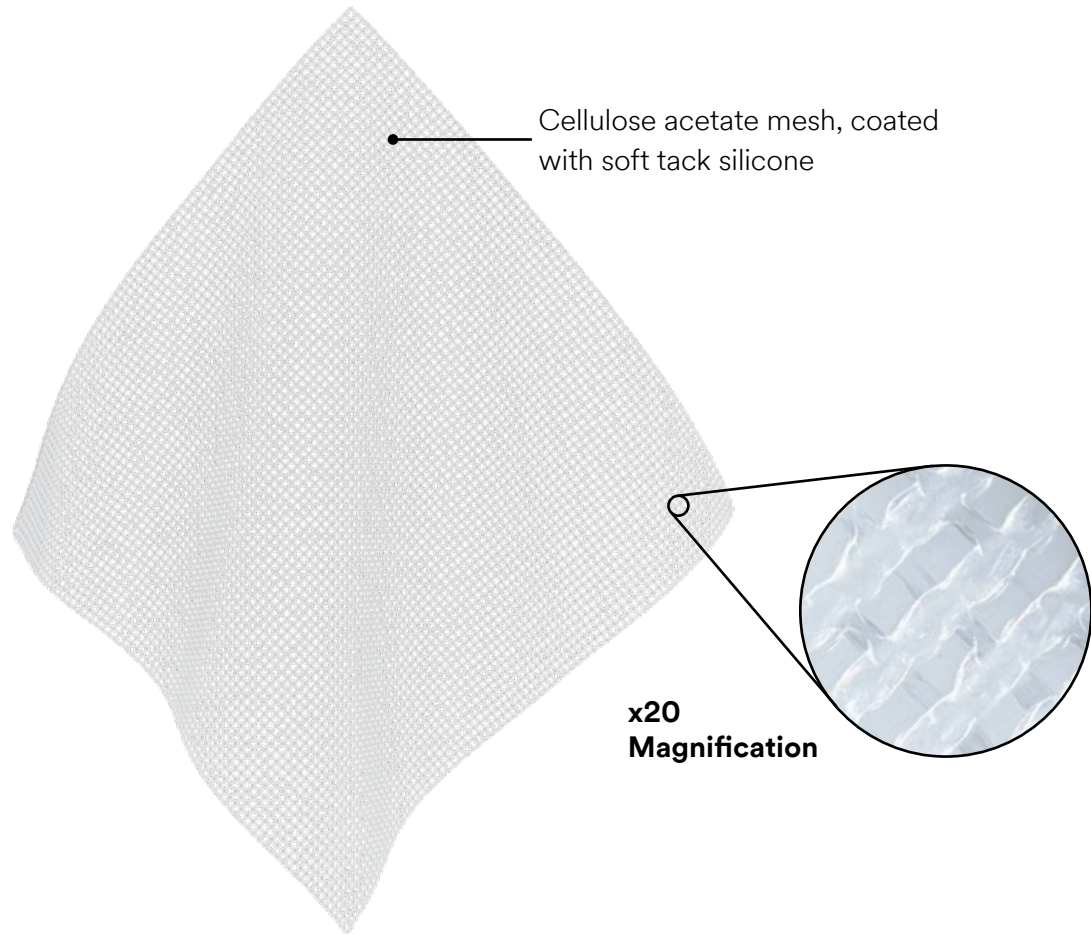


**3M** + **KCI™**

# What is it?

ADAPTIC TOUCH™ Dressing is a flexible, open-mesh primary wound contact layer comprised of cellulose acetate coated with a soft tack silicone designed to facilitate fluid transfer to secondary dressing and minimize adherence and pain at dressing change.

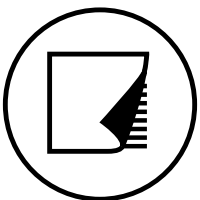
# How does it work?



## Comfort

ADAPTIC TOUCH™ Dressing helps protect the wound while minimizing patient pain and trauma on removal and at dressing change<sup>1</sup>:

- The advanced mesh design allows for atraumatic removal.<sup>1,2</sup>
- The soft tack silicone assists dressing application and helps prevent adherence of the secondary dressing to the wound.<sup>1,2</sup>

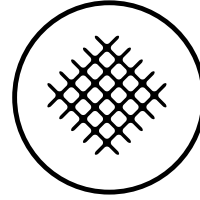


In an *in vitro* model, the use of ADAPTIC TOUCH™ Dressing in conjunction with a secondary dressing reduced secondary dressing adherence (84% reduction with a foam dressing and 92% reduction with an alginate dressing)<sup>2</sup>

## Performance

ADAPTIC TOUCH™ Dressing has been designed to incorporate:

- A large number of small sized pores, to minimize the risk of granulation tissue in-growth<sup>3,4</sup>.
- While also maintaining an open area, which facilitates the free passage of exudate to the secondary dressing, reducing the risk of exudate pooling and maceration<sup>3,4</sup>.



Open area

**92%**

greater than Mepitel<sup>3,4</sup>

## Affordability

A consensus document described how well ADAPTIC TOUCH™ Dressing functions in the clinical settings over time. Particularly in regards to non-adherence to the wound and secondary dressing, atraumatic removal, ease of use and cost-effectiveness<sup>3</sup>.

### Skin tears case study

A case series involving 6 elderly patients with skin tears of type I, II and III showed ADAPTIC TOUCH™ Dressing to<sup>5</sup>:

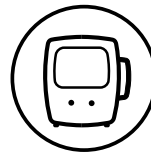
- increase patient comfort
- reduce pain
- decrease nursing time for dressing change

## When to use

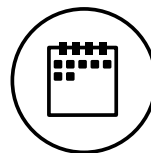
It is designed as a primary wound contact layer for use in the management of dry to heavily exuding, partial and full-thickness chronic wounds including:

- venous ulcers
- decubitus (pressure) ulcers
- diabetic ulcers
- traumatic wounds
- surgical wounds
- donor sites
- 1st and 2nd degree burns

Please refer to the full instructions for use in the packaging insert.



ADAPTIC TOUCH™ Dressing may also be suitable for use, under medical supervision, with NPWT for the protection of fragile wound structures<sup>1,6\*</sup>



May be left in place for several days depending upon amount of exudate



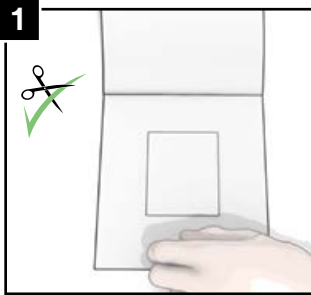
ADAPTIC TOUCH™ Dressing stays in place during dressing application<sup>1,2</sup>

# User guide

## Before application

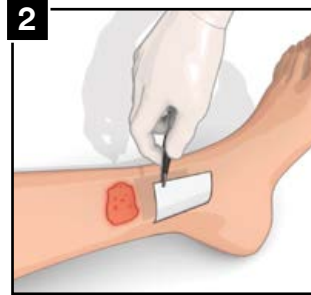
Please refer to the full instructions for use in the packaging insert. Select a size of ADAPTIC TOUCH™ Dressing that is larger than the wound. Prepare the wound according to wound management protocol. Ensure skin surrounding the wound is dry. Remove ADAPTIC TOUCH™ Dressing from the pouch.

## Dressing preparation



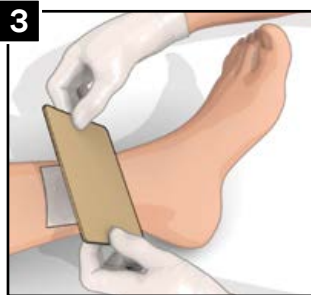
1. If needed, **ADAPTIC TOUCH™** Dressing may be cut to size with sterile scissors.
2. It is best to cut **ADAPTIC TOUCH™** Dressing while one or two backing papers are in place.

## Dressing application



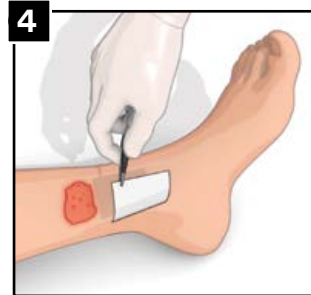
1. Remove one backing paper from **ADAPTIC TOUCH™** Dressing. Place **ADAPTIC TOUCH™** Dressing directly over the wound and smooth in place around the wound.
2. Remove the second backing paper using surgical tongs or forceps. If more than one piece of **ADAPTIC TOUCH™** Dressing is required, ensure dressings overlap to avoid secondary dressing adherence to the wound. Overlap should be minimized to prevent occlusion of holes.

## Secondary dressing application



- Cover **ADAPTIC TOUCH™** Dressing with a secondary dressing such as **TIELLE™** Dressing Family.
- Choose the secondary dressing based on the level of exudate. Apply any secondary cover or retention/compression bandage.

## Dressing change and removal



- Dressing change frequency is dictated by good wound care practice and will depend on the condition of the wound. **ADAPTIC TOUCH™** Dressing may be left in place for several days.
1. Gently remove the secondary dressing.
  2. Gently remove the dressing from the wound bed and discard.



Re-order code	Size	UOM Packaged	HCPCS code
500501	2" x 3"	10 ea/ct – 5 ct/bx	A6206
500502	3" x 4 1/4"	10 ea/ct – 5 ct/bx	A6206
500503	5" x 6"	10 ea/ct – 5 ct/bx	A6207
500504	8" x 12 3/4"	5 ea/bx	A6208

To learn more about the benefits of ADAPTIC TOUCH™ Dressing, call **800-275-4524** or visit **acelity.com**

\*Please refer to the full instructions for use in the NPWT devices packaging insert

### References:

1. International case series: Using ADAPTIC TOUCH™ Non-Adherent Silicone Dressing: Case Studies. London: Wounds International, 2013.
2. Bianchi J, Gray D. Adaptic Touch non adherent dressing. Wounds UK 2011; 7(1).
3. Bianchi, J. et al. Consensus guidance for the use of Adaptic Touch non-adherent dressing. Wounds UK, 2011, 7(3).
4. Brosnan, P. et al. The design principles of non-adherent materials. Poster, EWMA 2012.
5. LeBlanc, K. et al Managing Skin Tears in the Elderly Population with Adaptic Touch Non Adhering Silicone Dressing A Case Series. Paper presented by CAWC, 2011.
6. Le C. Pairing advanced wound care therapy with NPWT. Today's wound clinic, 2013; 18-20.

**NOTE: Specific indications, contraindications, warnings, precautions and safety information may exist for these products and therapies. Please consult a healthcare provider and product instructions for use prior to application. Rx only.**

©Copyright 2020 3M. All rights reserved. 3M and the other marks shown are marks and/or registered marks. Unauthorized use prohibited. LIT#AT SS • PRA-PM-US-00537 (03/20)

