



Cuрос™

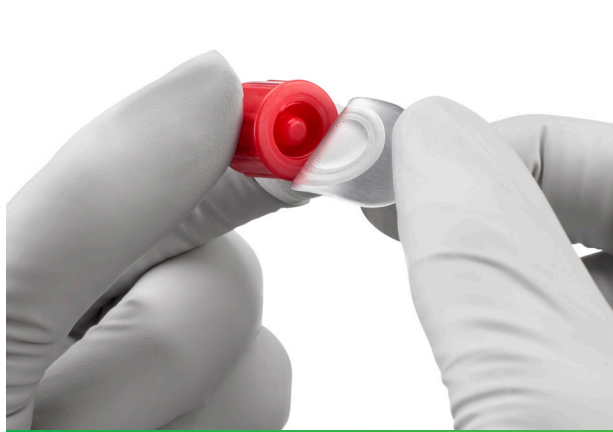
Disinfecting Port
Protectors

HOW TO USE: DISINFECTING CAP FOR STOPCOCKS AND CATHETER HUBS

Cuрос™ Stopper

Disinfecting Cap for Open Female Luers

Disinfects in 1 minute. Protects open female luers for up to 7 days.



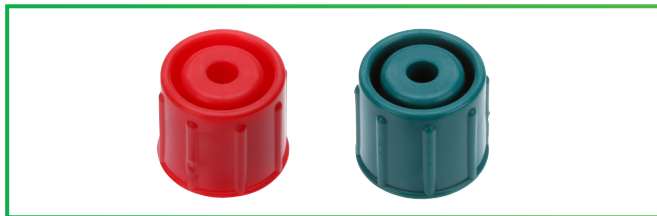
Peel



Push & Twist on stopcock



Push & Twist on catheter hub



3M™ Cuрос™ Stopper Disinfecting Caps for Open Female Luers are available in two colors: red and teal.

While they do not differ in function, some facility's use red caps to denote arterial lines. Choose the appropriate color based on your facility's protocol.

- Verify stopcock valve or catheter clamps are in the **closed** position prior to using the 3M™ Cuрос™ Disinfecting Cap for Open Female Luers
- If open female luer is visibly soiled, clean with 70% Isopropyl Alcohol swab before using cap
- Do not use cap if the seal is broken, torn, or punctured
- Detach the cap from the foil
- Once foil is removed, push and twist device clockwise onto the end of the open female luer until tightly connected
- Cap must remain in place for a minimum of one (1) minute and may remain on for seven (7) days if not removed
- The open female luer can be accessed immediately after removing the Cuрос Stopper disinfecting cap that has been in place for a minimum of one (1) minute
- Discard cap after each use; do not reuse cap
- New cap should be placed on open female luer after each use
- Follow hospital protocol for disinfecting open female luers, if performing sequential accesses.

WARNING: To avoid potential for injury, use only on open female luers and ensure the cap is securely tightened.

CAUTION: Potential choking hazard.



Do not apply to needleless connectors



Do not apply to Tego® Hemodialysis Connectors



Critical & Chronic Care Solutions Division
3M Health Care
2510 Conway Avenue
St. Paul, MN 55144 USA

1 800 228-3957
www.3M.com/C3SD

Printed in U.S.A. Please recycle this poster.
© 3M 2017. All rights reserved.
3M and Cuрос are trademarks of 3M.
70-2011-6731-2

STERILE R

Active Ingredient: 70% isopropyl alcohol (IPA).
Single Use Only. Rx Only. This device is not made with natural rubber latex or plasticiser Diethylhexylphthalate (DEHP). Refer to current device labeling for indications for use, warnings and product details.