

**3M** Science.  
Applied to Life.™



# 3M™ Filtek™ Supreme XTE Universal Restorative

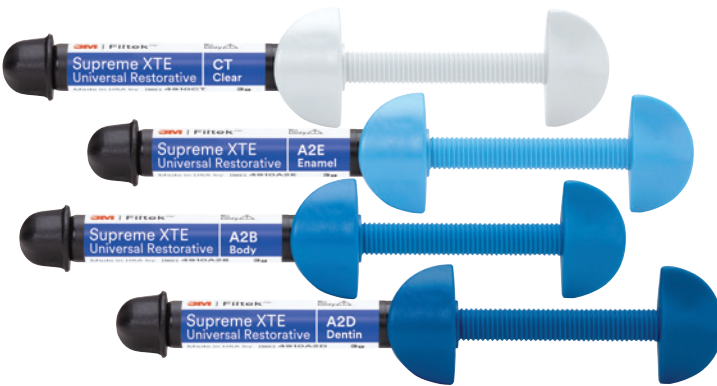


# Always beautiful

## When you want to elevate your artistry, here's your dream palette.

When it comes to beautiful, natural-looking results, there's nothing like 3M™ Filtek™ Supreme XTE Universal Restorative. Whether you specialise in aesthetic dentistry or create aesthetic restorations in specific cases, we have your dream palette.

Our **36 beautiful shades and 4 opacities** allow you to match any patient's dentition and create restorations that are virtually undetectable using a multi-shade layering technique.

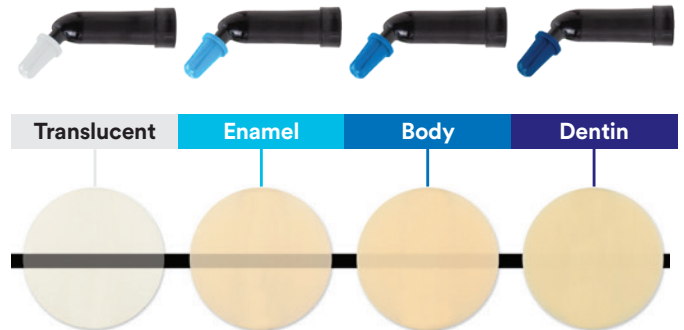


Anterior restoration created using three shades (A3D, A3.5B, A1E) of 3M™ Filtek™ Supreme XTE Universal Restorative.

Photo courtesy of Dr. Gabriel Krastl, Department of Periodontology, Endodontics and Cariology, University of Basel, Switzerland.

## Four opacities

Translucent, Enamel, Body and Dentin designations refer to differences in opacity.



Syringes and caps are colour coded by opacity – Translucent, Enamel, Body and Dentin – and bold lettering makes shades easy to identify.

## Unsurpassed polish retention – a difference you can see.

The initial gloss of most restorative can be very impressive, but you want a polish that lasts. Thanks to 3M's nanofiller technology, Filtek Supreme XTE Restorative polishes easily and retains its natural gloss better than other composites – even a microfill.\*



Polish you can see. Side-by-side photos compare the polish retention of five leading composite restoratives to that of 3M™ Filtek™ Supreme XTE Universal Restorative after 6,000 cycles of simulated toothbrushing.

# Beautifully simple

## One simple shading system with endless possibilities.

We know that you are committed to making each restoration the best it. If you prefer a dual-shade or multishade technique, then you'll enjoy the full palette of shades Filtek Supreme XTE Restorative offers.

To make it easier, we've simplified our shading system. Our syringes and capsule bottle labels are now colour-coded by opacity. Plus, the labels have bold lettering to help you quickly find the shades you've selected.

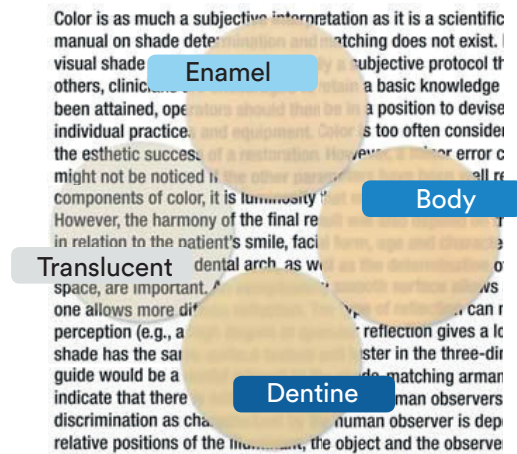
**Translucent shade handling:** Our Translucent shades have the same non-sticky, great paste handling as the other opacities – and are also available in capsules.

Filtek Supreme XTE Universal Restorative is a system that provides excellent aesthetic results, whether using a single, dual or multi-shade technique.



Multi-layer restoration (composite replacement) created using a combination of 3M™ Filtek™ Supreme XTE shades: A3D, A1E, A2E, WB and GT.

Photo courtesy of Dr Terry Wong BDS (Hons) Melbourne, Australia



**Opacities:** Dentine Body, Enamel and Translucent designations refer to differences in opacity.

## When you want a simple solution, you'll love this.

Most restorations are made with just one of eight body shades. By using 3M™ Filtek™ Supreme XTE Universal Restorative, it's truly possible to create natural-looking restorations using a simple, single-shade technique.

Dentists say they love the way 3M™ Filtek™ Restorative shades blend with surrounding dentition. Add to that the high gloss provided by 3M's nanotechnology, and you'll find it really easy to satisfy patient expectations.

**8** 'Go-to' body shades

Filtek restorative shades match the VITA classical Shade Guide. An A2 is an A2, so aesthetics are beautifully predictable.



- A1B
- A2B
- A3B
- A3.5B
- B1B
- B2B
- C1B
- C2B

# Simply durable... anywhere

## Beautiful... yes. And it's strong enough to use anywhere.

Think how much more efficient your day would be if you didn't have to decide which composite to use in each clinical situation. Our nanotechnology gives 3M™ Filtek™ Supreme XTE Universal Restorative remarkable strength for anterior and posterior use.\*



Amalgam filling replaced by 3M™ Filtek™ Supreme XTE Universal Restorative in a posterior restoration.

Photo courtesy of Dr. Grant Chyz.

## Excellent wear resistance

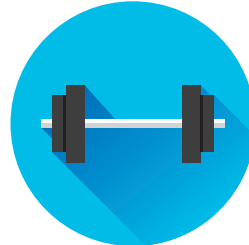
The lower the wear rate of a composite material, the better its wear resistance. In an in vitro 3-body wear test, Filtek Supreme XTE restorative had the lowest wear rate of all leading composites tested.\*



3-body wear

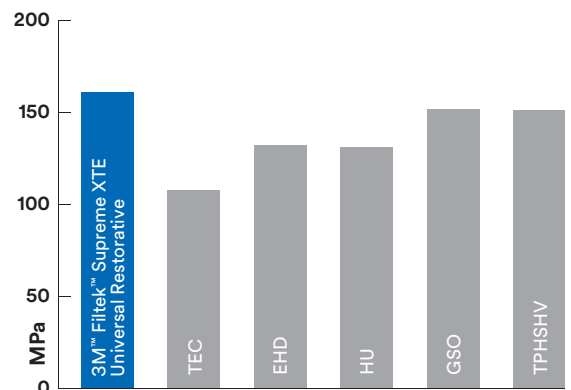
## Outstanding strength

In a test comparing leading dental composites, the flexural strength of Filtek Supreme XTE restorative proved better than that of comparable products tested.\*



Flexural strength

## Flexural strength



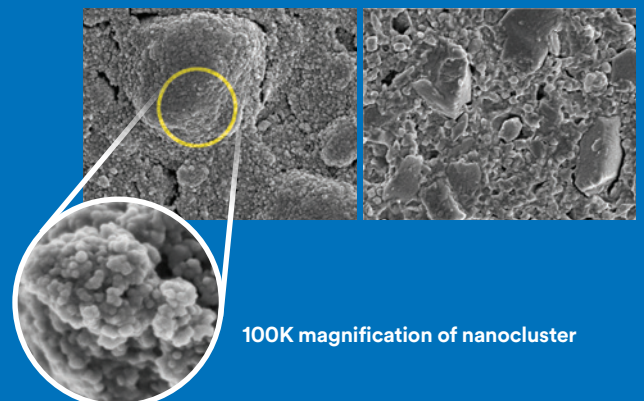
## 3M's nanofiller technology leads to outstanding polish and strength.

The significant distinction between 3M™ Filtek™ Supreme XTE Universal Restorative and micro- and nanohybrids is that our nanoparticles are uniquely formed in the nano size range and are not the result of a grinding process. Some nanoparticles are fused into nanoclusters, which shear at a rate similar to the wear of the surrounding resin matrix during abrasion, such as toothbrush abrasion. That's why restorations made from Filtek Supreme XTE restorative maintain a smooth surface gloss for superb aesthetics.

The nanoclusters have a similar size range as fillers found in the hybrid composites and provide for high filler loading. This results in excellent physical properties and wear resistance that are ideal for posterior restorations.

3M™ Filtek™ Supreme XTE Universal Restorative nanocluster

Leading competitive composite



100K magnification of nanocluster

SEM photos courtesy of Dr. J. Perdigo, University of Minnesota.

# Confidence to use anywhere.

Bring excellent aesthetics and outstanding strength to every restoration – anterior or posterior\* – with 3M™ Filtek™ Supreme XTE Universal Restorative.

As you'd expect from a global leader in aesthetic and restorative technologies, 3M's nanotechnology provides excellent wear resistance\* and gloss retention\*... so your restorations will last and look beautiful, too.

That's why dentists around the world have made it their composite of choice for **more than 600 million restorations\***... and counting.

## Dentists rate the handling as 'ideal'.

It's easier to achieve the restorative result you want when the composite handles well. For example, the improved handling of our translucent shades makes it easier to create life-like incisal edges.

All of our shades offer excellent handling. In fact, in a field study, dentists (n=99) rated Filtek Supreme XTE Restorative as 'ideal' on viscosity, stickiness, flow and ability to hold its shape.\*

## Simplify your practice with the composite that does it all.

Any place:  
anterior or posterior.\*

Any class.



## A versatile choice is a smart choice.

### Beautiful aesthetics\*

- ▶ Excellent polish retention\*
- ▶ Wide range of shades and opacities
- ▶ Natural-looking fluorescence

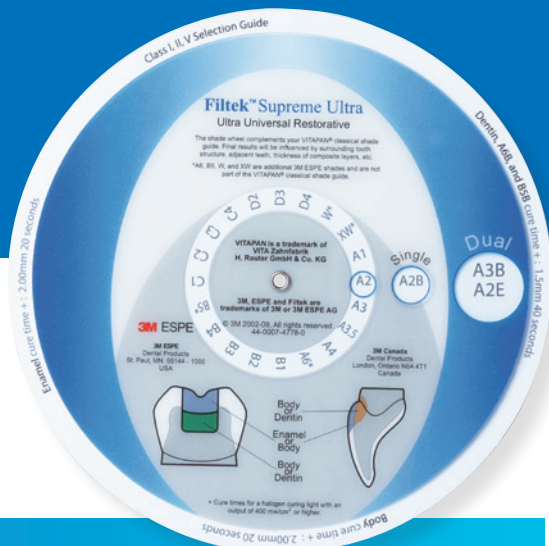
### Simple to use\*

- ▶ Exceptional handling
- ▶ Natural-looking body shades for a simple, single-shade technique
- ▶ Capsules and syringes are colour coded by opacity

### Durable in anterior and posterior use\*

- ▶ Excellent wear resistance\*
- ▶ Outstanding strength\*
- ▶ High radiopacity\*

You may already know the benefits of working with 3M™ Filtek™ Supreme XTE Universal Restorative. What you may not know is how easy it is to move from a single-shade to a dual-shade technique. The 3M™ Shade Selector Wheel simplifies the selection process and serves as a guide for placing one to four shades of composite. It is included in every dual-shade kit and professional kit.



## Ordering information

Although Filtek Supreme XTE Restorative is available in 36 shades and opacities, the **8 Body shades** highlighted below will meet the majority of your needs for creating natural-looking, single-shade restorations.

Item	Product information
4911S	<b>3M™ Filtek™ Supreme XTE Universal Restorative Single Shade Intro Kit</b> 40 × 0.2g capsules: 20 each of body shades A2, A3; Technique guide; Instructions for use
4910S	<b>3M™ Filtek™ Supreme XTE Universal Restorative Single Shade Intro Kit</b> 4 × 3g syringes: 2 each of body shades A2, A3; Technique guide; Instructions for use
4911P	<b>Professional kit in capsules: 160 capsules, 0.2 g</b> 10 of each dentin shade: A2, A3, A4 20 of each body shade: A2, A3, A3.5, A4 10 of each enamel shade: A1, A2, A3, W 10 of each translucent shade: AT
4910P	<b>Professional kit in syringes: 12 syringes, 3 g</b> Dentin shades: A2, A3, A4 Body shades: A2, A3, A3.5, A4 Enamel shades: A1, A2, A3, W Translucent shades: T
5850RD	<b>Filtek restorative capsule dispenser</b> A dispenser designed to provide quick and easy delivery of 3M™ restorative materials packaged in capsules.

You may like to consider this flowable restorative: **3M™ Filtek™ Supreme Flowable Restorative.**

Virtually no bubbles or material “run-on” during dispensing\*



Shade	Item No.	Item No.	Product Info.
A1	6032A1	3700T	<b>3M™ Filtek™ Supreme Flowable Restorative Dispensing Tips, 20-gauge, Grey (20)</b>
A2	6032A2		
A3	6032A3		
A3.5	6032A3.5		
A4	6032A4		
B1	6032B1		
B2	6032B2		
C2	6032C2		
D2	6032D2		
White	6032W		
Extra White	6032XW		
OA3	6032OA3		

### 3M Oral Care

**3M United Kingdom PLC**  
Charnwood Campus  
10 Bakewell Road  
Loughborough  
Leicestershire  
LE11 5RB

**3M Ireland Ltd**  
The Iveagh Building  
Carrickmines Park  
Carrickmines  
Dublin 18  
+353 (0)1280 3555

### Refills for 3M™ Filtek™ Supreme XTE Universal Restorative

Refill	Item	Item
<b>Body Shades</b>		
A1B	4910A1B	4911A1B
A2B	4910A2B	4911A2B
A3B	4910A3B	4911A3B
A3.5B	4910A3.5B	4911A3.5B
B1B	4910B1B	4911B1B
B2B	4910B2B	4911B2B
C1B	4910C1B	4911C1B
C2B	4910C2B	4911C2B
A4B	4910A4B	4911A4B
A6B	4910A6B	4911A6B
B3B	4910B3B	4911B3B
B5B	4910B5B	4911B5B
C3B	4910C3B	4911C3B
D2B	4910D2B	4911D2B
D3B	4910D3B	4911D3B
White	4910WB	4911WB
Extra White	4910XWB	4911XWB
<b>Dentin Shades</b>		
A1D	4910A1D	4911A1D
A2D	4910A2D	4911A2D
A3D	4910A3D	4911A3D
A4D	4910A4D	4911A4D
B3D	4910B3D	4911B3D
C4D	4910C4D	4911C4D
White	4910WD	4911WD
<b>Enamel Shades</b>		
A1E	4910A1E	4911A1E
A2E	4910A2E	4911A2E
A3E	4910A3E	4911A3E
B1E	4910B1E	4911B1E
B2E	4910B2E	4911B2E
D2E	4910D2E	4911D2E
White	4910WE	4911WE
Extra White	4910XWE	4911XWE
<b>Translucent Shades</b>		
Clear	4910CT	4911CT
Blue	4910BT	4911BT
Grey	4910GT	4911GT
Amber	4910AT	4911AT

**Syringe shade refill:** Includes 1 × 4g syringe, Instructions for use

**Capsule shade refill:** Dentin, enamel and translucent shade refills include 10 × 0.2g capsules; Body shade refills include 20 × 0.2g capsules; Instructions for use

\* 3M internal data.

OMG217482.

3M and Filtek are trademarks of 3M Company.  
© 3M 2021. All rights reserved.

