

3M Science.
Applied to Life.™

3M™ Filtek™ One
Bulk Fill Restorative



You choose
it for speed.
Now it's more
aesthetic, too.



You'll like that it's simple. They'll be happy that it looks good, too.

3M™ Filtek™ One Bulk Fill Restorative



It's true. Now bulk fill placement can be more aesthetic.

Posterior restorations are challenging – which is why bulk fill composites that simplify and speed up the procedure have become so popular.

However, until now, the faster, easier placement of bulk fill has been at the sacrifice of aesthetics. So, as a global leader in aesthetic and restorative technologies, we went back to our experts for a solution you're sure to love:

3M™ Filtek™ One Bulk Fill Restorative

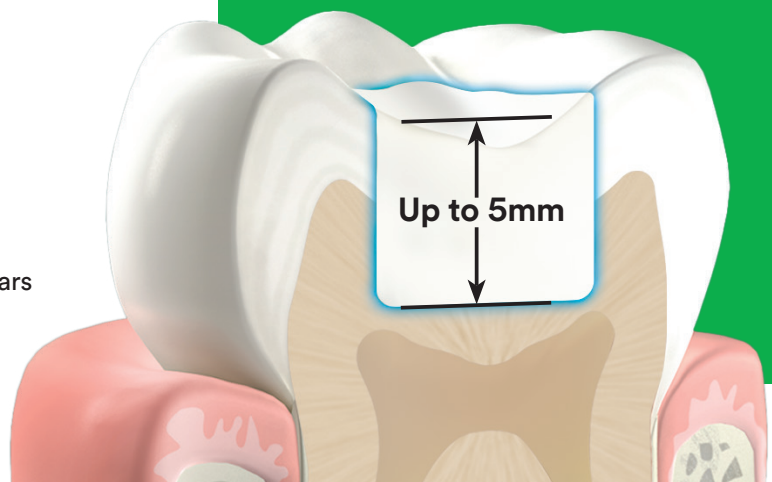
Designed for the posterior, its unique optical properties and improved opacity give you the simplicity of one-step placement – up to 5mm – *without compromising aesthetic results.*⁺

Now you and your patients have something to smile about.

Indications

- ▶ Direct anterior and posterior restorations (including occlusal surfaces)
- ▶ Base/liner under direct restorations
- ▶ Core build ups
- ▶ Splinting
- ▶ Indirect restorations including inlays, onlays and veneers
- ▶ Restoration of deciduous teeth
- ▶ Extended fissure sealing in molars and pre-molars
- ▶ Repair of defects in porcelain restorations, enamel and temporaries

- ▶ Fast and easy one-step placement
- ▶ Increased opacity for improved aesthetics⁺
- ▶ Stress relief to enable up to 5mm depth of cure⁺
- ▶ Excellent adaptation⁺
- ▶ No need for layering or expensive dispensing devices
- ▶ Excellent handling and sculptability⁺
- ▶ 3M's true nanotechnology provides superior wear resistance and excellent polish retention⁺
- ▶ High radiopacity⁺
- ▶ Unique tip design for easier access to deep cavities
- ▶ Available in 5 shades



How 3M Science enables the simplicity of one-step bulk placement with improved aesthetics.

The technologies behind 3M™ Filtek™ One Bulk Fill Restorative

New! Smart contrast ratio management

Increases opacity without sacrificing depth of cure

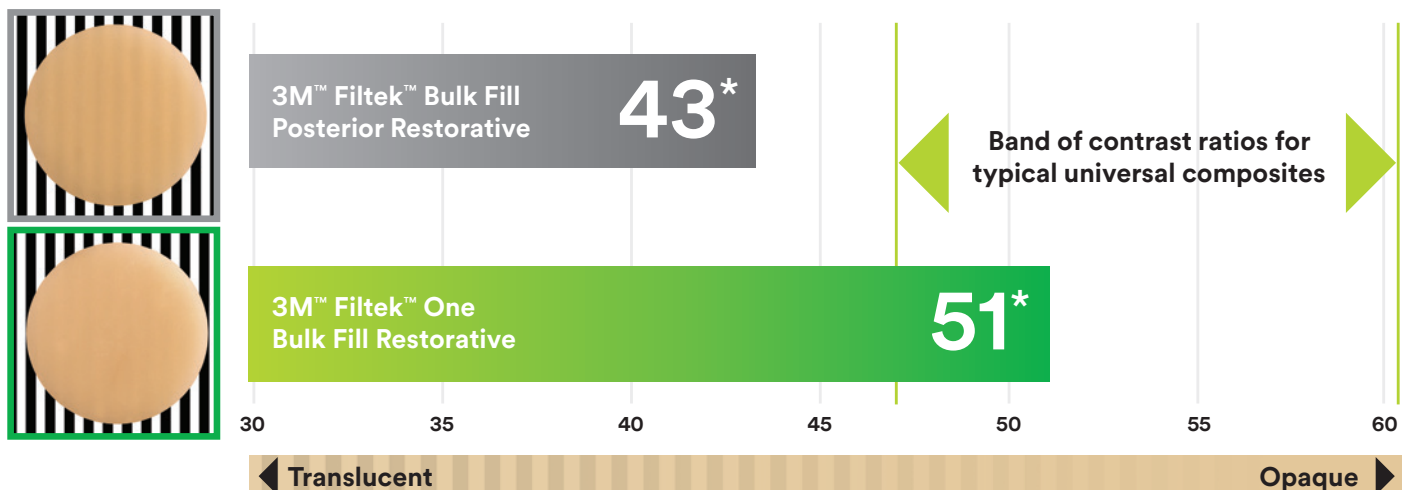
Further development of 3M nanotechnology allows us to manage opacity and depth of cure in a smarter way. With our unique Smart Contrast Ratio Management technology, we've increased opacity without reducing depth of cure.*

In its cured state, Filtek One Bulk Fill restorative has a higher opacity than 3M™ Filtek™ Bulk Fill Posterior Restorative, resulting in improved aesthetics.*

Did you know?

Contrast ratio is the measurement of the translucency or opacity of the material.

Contrast ratio

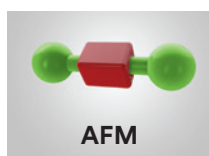


3M Oral Care Internal Data. Claim 6810, 2016.

*The contrast ratio is the average of all shades.

Innovative AUDMA and AFM monomers

Reduces shrinkage and relieves stress to allow bulk fill placement up to 5mm.*



Addition-fragmentation monomer (AFM) relieves stress during polymerisation.*

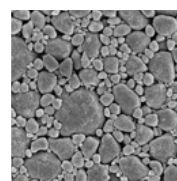


Aromatic urethane dimethacrylate (AUDMA) helps reduce the amount of shrinkage and stress that occurs during polymerisation.*

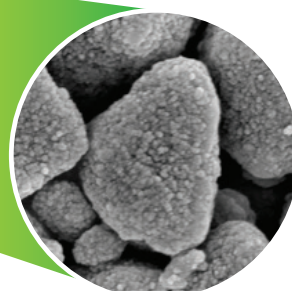
3M's true nanofiller technology

Provides superior wear resistance and excellent polish retention.*

5K magnification of nanocluster



50K magnification of nanocluster



Simplify your entire posterior restorative procedure.



3M™ Scotchbond™ Universal Plus Adhesive

3M™ Scotchbond™ Universal Plus Adhesive is the first radiopaque universal adhesive. It keeps all the benefits of the original 3M™ Scotchbond™ Universal Adhesive while adding greater control and predictability.



3M™ Elipar™ DeepCure-S LED Curing Light

Predictable, reliable cure.* Optimised light guide is more comfortable for patients and provides easier access to posterior teeth.*



3M™ Sof-Lex™ Diamond Polishing System

Easily adapts to irregular, convex and concave tooth surfaces* and imparts paste-like gloss with the convenience of a rubberised system.* Fast and easy to use.

Ordering information



3M™ Filtek™ One Bulk Fill Restorative

Shade	Syringe	Capsule
A1	4866A1	4867A1
A2	4866A2	4867A2
A3	4866A3	4867A3
B1	4866B1	4867B1
C2	4866C2	4867C2

Syringe shade refills include:

1 – 4g syringe; Technique guide; Instructions for use.

Capsule shade refills include:

20 – 0.2g capsules; Technique guide; Instructions for use.



3M™ Scotchbond™ Universal Plus Adhesive - Vial

Item # Product information

41293	Intro Kit – Vial 1 Vial 5ml, 50 Disposable Brushes, 1 Etchant Syringe 3ml, 25 Dispensing Tips
41294	Refill Vial - 1 × 5ml
41295	Refill Vial - 3 × 5ml

3M™ Scotchbond™ Universal Plus Adhesive - Unit Dose

Item # Product information

41297	Intro Kit Unit Dose 50 unit doses, 1 Etchant Syringe 3ml, 25 Dispensing Tips
41298	Unit Dose 100 100 unit doses, 1 Etchant Syringe 3ml, 25 Dispensing Tips



3M™ Elipar™ DeepCure-S LED Curing Light

Item # Product information

76976	3M™ Elipar™ DeepCure-S LED Curing Light Handpiece (cordless), Charging base (230V); Li-ion battery; 10mm Light guide; Eye shield
-------	-----------------------------------------------------------------------------------------------------------------------------------------



3M™ Sof-Lex™ Diamond Polishing System

Item # Product information

5092-IM	3M™ Sof-Lex™ Diamond Polishing System – Introductory kit 5 – 3M™ Sof-Lex™ Pre-Polishing Spirals (Beige); 5 – 3M™ Sof-Lex™ Diamond Polishing Spirals (Pink); 1 – 3M™ Sof-Lex™ RA Mandrel; Instructions for use; Technique card
5090	3M™ Sof-Lex™ Pre-Polishing Spirals – Refill 15 Sof-Lex Pre-Polishing Spirals (Beige)
5091	3M™ Sof-Lex™ Diamond Polishing Spirals – Refill 15 Sof-Lex Diamond Polishing Spirals (Pink)

3M Oral Care
3M United Kingdom PLC
Charnwood Campus
10 Bakewell Road
Loughborough
Leicestershire LE11 5RB
0845 602 5094

3M Ireland Ltd
The Iveagh Building
Carrickmines Park
Carrickmines
Dublin 18
00 353 (01) 280 3555

3M.co.uk/Dental

GD607.

*3M Internal data.

3M, Scotchbond, Elipar, Sof-Lex and Filtek are trademarks of 3M Company. © 3M 2021. All rights reserved. OMG217490

