

3M Science.
Applied to Life.™

STEP-BY-STEP



3M™ RelyX™ Universal
Resin Cement



System Components

3M™ RelyX™ Universal

Resin Cement

- Dual-cure two paste resin cement
- Adhesive and self-adhesive indications

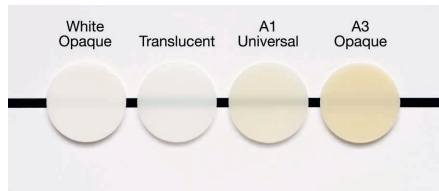


3M™ Scotchbond™ Universal Plus

Adhesive

- Self-etch, selective-etch and total-etch adhesive
- MDP primer for zirconia and metal
- Silane primer for glass ceramics, composites, fiber reinforced posts

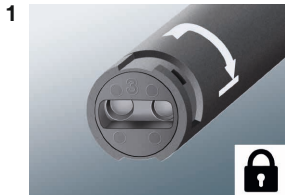
Shade Selection



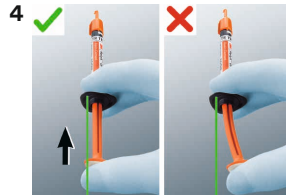
3M™ RelyX™ Universal Micro Mixing Tips with Elongation Tips



Self-sealing automix syringe



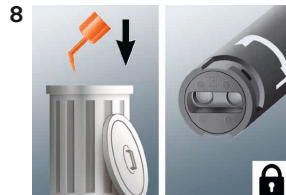
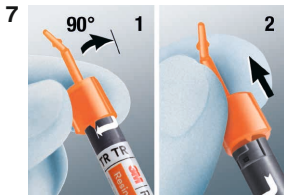
Full rotation until stop.



Apply moderate centric force without bending the plunger.



Discard a small amount of cement.



Store syringe without mixing tip.



15 applications on average

Restoration Pre-Treatment Overview

Fiber-reinforced Composite Post

Priming with adhesive not required for 3M™ RelyX™ Fiber Posts



Zirconia, Alumina, Metal

Priming with adhesive optional, recommended for veneer, table top, adhesive bridge

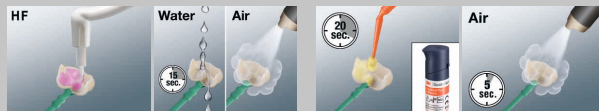


Composite/Hybrids



Glass-Ceramic

Alternative primer: Apply a Silane, e.g. 3M™ RelyX™ Ceramic Primer



See section

1

Follow the instructions for use of the restoration material for specific instructions.

Option 1

Self-adhesive. Recommended for:

- Post
- Crown
- Bridge



Adhesive on tooth not required.

See section

2a/2b

Option 2

(Selective-etch) adhesive. Recommended for:

- Inlay
- Onlay



Optional for cut enamel.

See section

2c

Option 3

Total-etch adhesive. To be used for:

- Table Top
- Veneer
- Adhesive Bridge



See section

2d

1

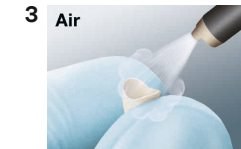
Restoration Pre-Treatment Recommendation

STEP-B

Fiber-reinforced Composite Post



Zirconia, Alumina, Metal



Y-STEP

3M™ RelyX™ Universal Resin Cement

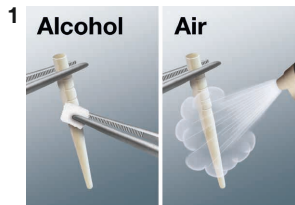
Composite/ Hybrids



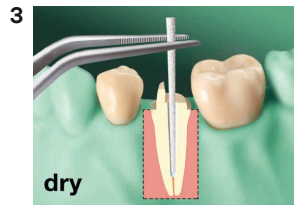
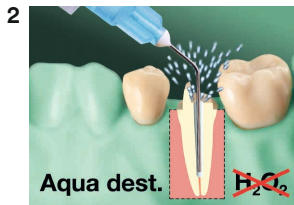
Glass-Ceramic



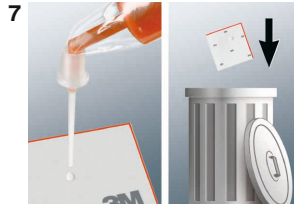
Follow the instructions for use of the restoration material for specific instructions.



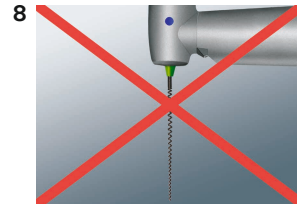
3M™ RelyX™ Fiber Posts only. For pre-treatment of other posts see section 1.



To unlock syringe fully rotate mixer until stop.



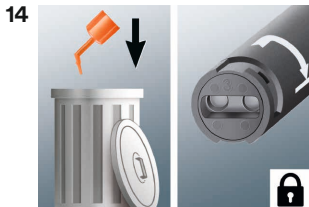
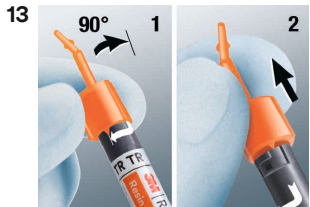
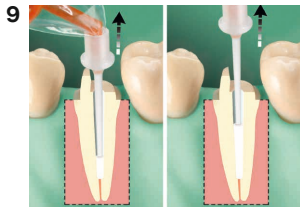
Do not use high pressure. Check mixer position (image 5) if extrusion force is high.



No lentulo!

Y-STEP

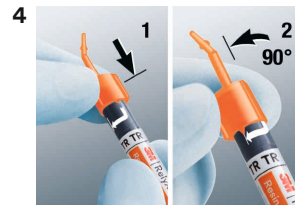
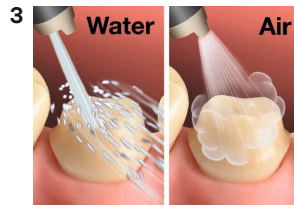
3M™ RelyX™ Universal Resin Cement



2b Self-Adhesive Cementation

STEP-B

1
Pre-treat
restoration
according to
section 1



To unlock syringe fully rotate
mixer until stop.

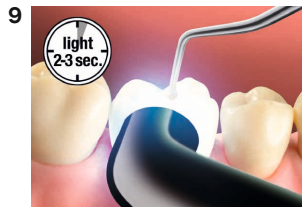


Do not use high pressure.
Check mixer position (image 5)
if extrusion force is high.

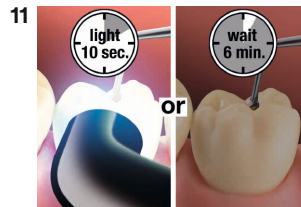


Y-STEP

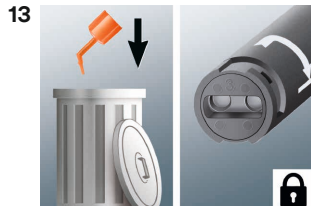
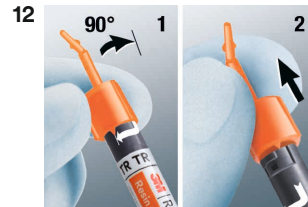
3M™ RelyX™ Universal Resin Cement



Tack cure approx. 2-3 sec per surface (>1200 mW/cm²).



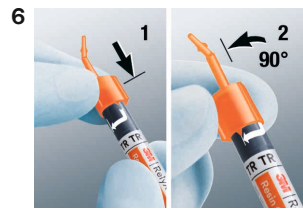
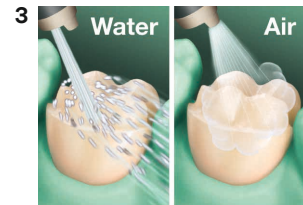
Light cure 10 sec per surface (>1200 mW/cm²) or wait 6 minutes.



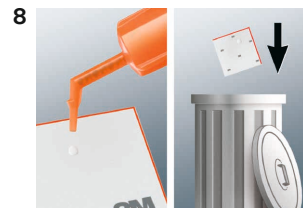
1
Pre-treat
restoration
according to
section 1



Selective-etch of uncut enamel.
Optional for cut enamel.



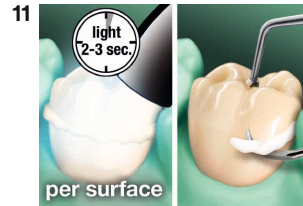
To unlock syringe fully rotate mixer
until stop.



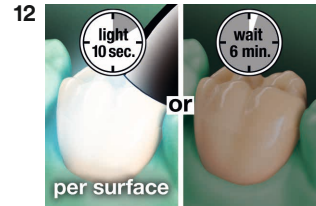
Do not use high pressure.
Check mixer position (image 7)
if extrusion force is high.

Y-STEP

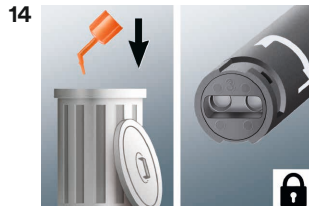
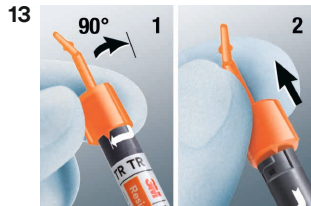
3M™ RelyX™ Universal Resin Cement



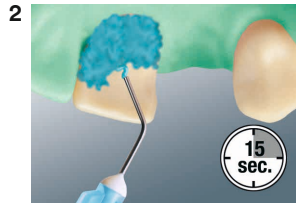
Tack cure approx. 2-3 sec per surface (>1200 mW/cm²).



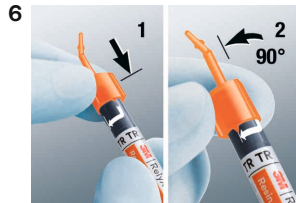
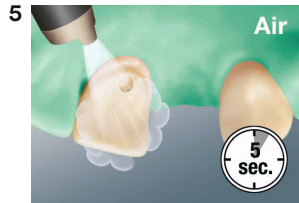
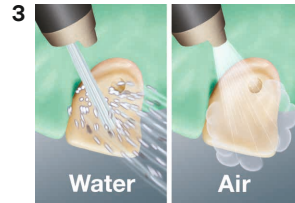
Light cure 10 sec per surface (>1200 mW/cm²) or wait 6 minutes.



1
Pre-treat
restoration
according to
section 1



Total-etch.



To unlock syringe fully rotate
mixer until stop.



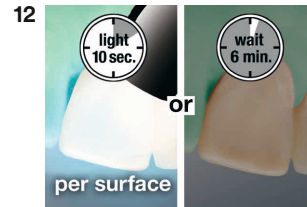
Do not use high pressure.
Check mixer position (image 7)
if extrusion force is high.

Y-STEP

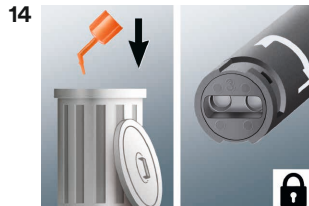
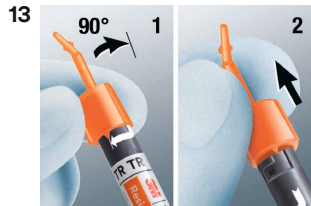
3M™ RelyX™ Universal Resin Cement



Tack cure approx. 2-3 sec per surface (>1200 mW/cm²).



Light cure 10 sec per surface (>1200 mW/cm²) or wait 6 minutes.



Please refer to product instructions for use for complete information.

3M.com/RelyXUniversal

3M.com/ScotchbondPlus



3M Oral Care · 2510 Conway Avenue · St. Paul, MN 55144-1000 USA · Phone 1-800-634-2249 · 3M.com/dental
3M, RelyX and Scotchbond are trademarks of 3M Company or 3M Deutschland GmbH. Printed in USA © 3M 2020. All rights reserved.



0123

70-2013-7320-9