



**3M** Science.  
Applied to Life.™

**Predictable impressions  
for your unpredictable day.**



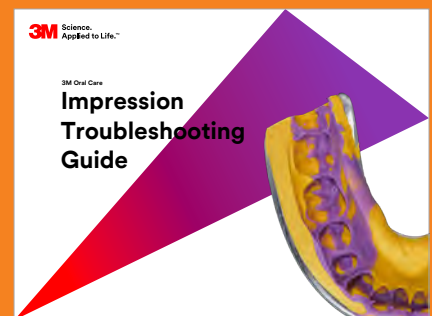
Long working time for you.  
Short setting time for them.

## Make better impressions.

3M gives you exactly what you need to simplify the process and achieve consistent clinical results.

### How you get there:

With products that set fast yet give you enough working time. Ingenious tools that streamline the procedure. And troubleshooting tips to help you ace every impression, so restorations fit.



Download 3M's tips at:  
[3M.com/GreatImpressions](https://www.3M.com/GreatImpressions)



# A successful procedure starts with the right materials.

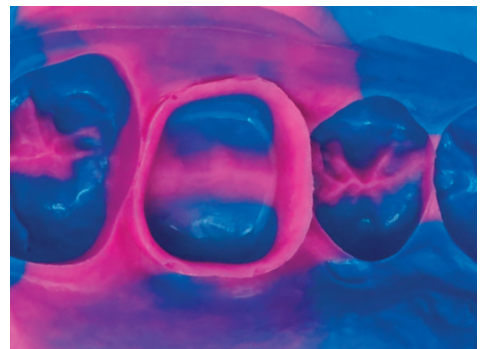
## Everyday impressions

### 3M™ Imprint™ 4 VPS Impression Material

Make precision an everyday occurrence. Imprint 4 VPS Impression Material provides:

- Sufficient time to load and seat the tray—no stressful race against the clock
- Help reduce chair time and stress for patients—Imprint 4 material has the shortest intraoral setting time among leading VPS fast-setting impression materials

3M™ Imprint™ 4 VPS  
Impression Material



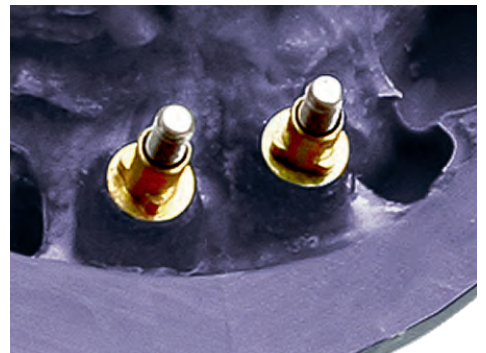
## For all challenges and implants

### 3M™ Impregum™ Polyether Impression Material

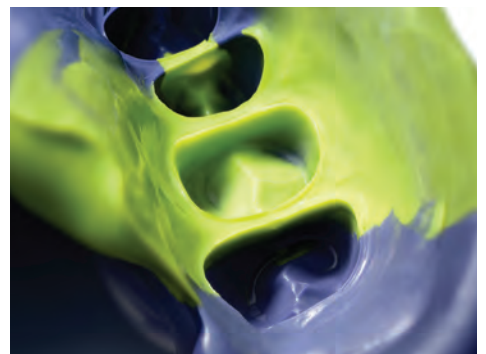
Helps remove the pressure of challenging cases. Impregum Polyether Impression Material gives you:

- Excellent moisture tolerance for void-free impressions, even in wet environments
- Sustained flowability throughout the entire working time
- Unique snap-set behavior—setting doesn't start until working time ends
- Classic materials offer all the working time you need for large cases
- Super Quick materials offer a 2-minute set time and improved taste for better patient comfort in small cases

3M™ Impregum™  
Polyether Impression  
Material



3M™ Impregum™ Super  
Quick Polyether  
Impression Material



# Gain control of your impression from start to finish.

## Before the procedure



### Prepare in advance

The 3M™ Intra-Oral Syringe can be prefilled up to 12 hours in advance without the material setting, so you can prepare for your daily case load.



## The impression procedure

Efficient tissue prep and precise displacement for a successful procedure.



### Manage tissue gently

3M™ Astringent Retraction Paste, with its extra-fine tip, offers a faster and gentler way to retract gingival tissue and control bleeding.



# ression

## cedure

ensing contribute to a



### Syringe more precisely

Apply wash materials with extreme accuracy and less waste. The 3M™ Intra-Oral Syringe enables easy handling and intraoral access.

**67%**  
less



VPS material waste with the 3M Intra-oral Syringe — Green compared to a traditional mix tip.



### Skip the tray adhesive

Save time with the ready-to-use 3M™ Impression Tray. Simply fill directly from the mixing device. The unique design controls material flow, minimizing defects and voids. And the fleece strip replaces messy, time-consuming tray adhesives.

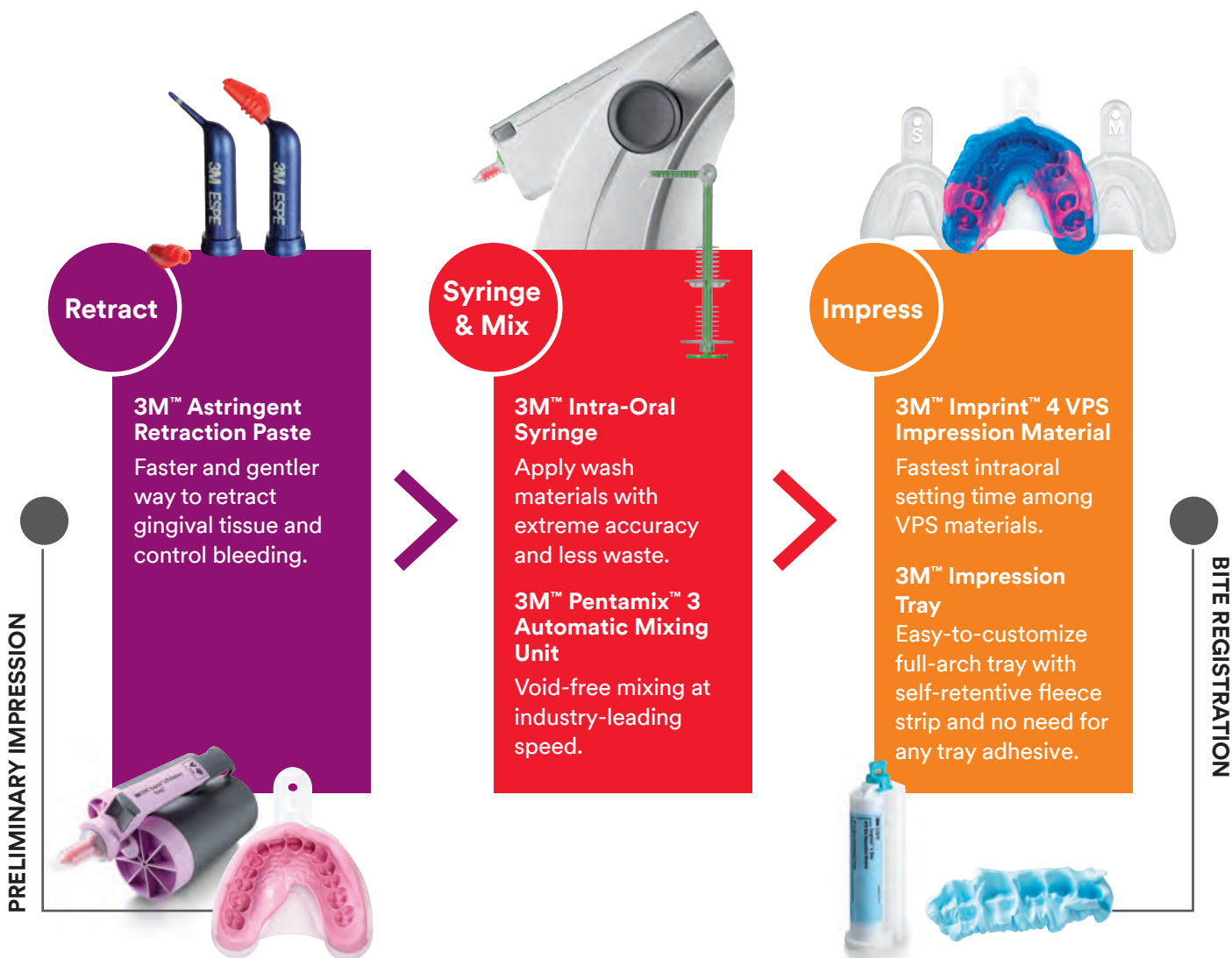


### Automix fast and easily

Cut down on steps, waste, mess and hand fatigue. With the push of a button, get a homogeneous mixture and deliver just the right amount, whether it's Imprint 4 VPS or Impregum Polyether materials.

- 3M™ Pentamix™ 3 Automatic Mixing Unit is small and fast, perfect for high-volume practices.
- Affordable 3M™ Pentamix™ Lite Automatic Mixing Unit is easy to carry and store, and ideal for practices with multiple operatories.

# Get more confidence in every step.



## Retract

### 3M™ Astringent Retraction Paste

Faster and gentler way to retract gingival tissue and control bleeding.

## Syringe & Mix

### 3M™ Intra-Oral Syringe

Apply wash materials with extreme accuracy and less waste.

### 3M™ Pentamix™ 3 Automatic Mixing Unit

Void-free mixing at industry-leading speed.

## Impress

### 3M™ Imprint™ 4 VPS Impression Material

Fastest intraoral setting time among VPS materials.

### 3M™ Impression Tray

Easy-to-customize full-arch tray with self-retentive fleece strip and no need for any tray adhesive.

PRELIMINARY IMPRESSION

BITE REGISTRATION

### 3M™ Imprint™ 4 Preliminary VPS Preliminary Impression Material

No dust, no mess, just low-stress impressions. Pouring when convenient and multiple times from only one impression. High hydrophilicity for easy model pouring.

### 3M™ Imprint™ 4 Bite VPS Bite Registration Material

Offers great flow properties, no-slump consistency, ample working time and a 60-second setting time.

**Warranty:** 3M warrants this product will be free from defects in material and manufacture at the time of purchase. 3M MAKES NO OTHER WARRANTIES INCLUDING ANY IMPLIED WARRANTY OF MERCHANTABILITY OR FITNESS FOR A PARTICULAR PURPOSE. User is responsible for determining the suitability of the product for user's application. If this product is defective within the warranty period, your exclusive remedy and 3M's sole obligation shall be repair or replacement of the 3M product.

**Limitation of Liability:** Except where prohibited by law, 3M will not be liable for any loss or damage arising from this product, whether direct, indirect, special, incidental or consequential, regardless of the theory asserted, including warranty, contract, negligence or strict liability.



3M Oral Care  
2510 Conway Avenue  
St. Paul, MN 55144-1000 USA  
Phone 1-800-634-2249  
Web 3M.com/dental

3M Deutschland GmbH  
Location Seefeld  
3M ESPE • ESPE Platz  
82229 Seefeld • Germany  
Info3MESPE@mmm.com  
www.3MESPE.com

3M, Impregum, Imprint and Pentamix are trademarks of 3M or 3M Deutschland GmbH. © 3M 2021. All rights reserved. (Rev. 8/2021)





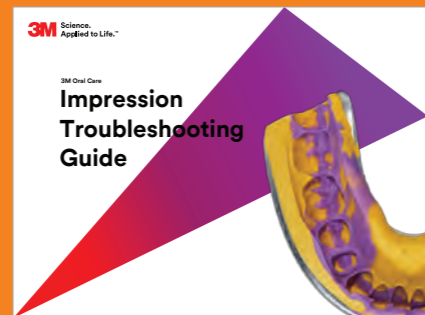
Long working time for you.  
Short setting time for them.

## Make better impressions.

3M gives you exactly what you need to simplify the process and achieve consistent clinical results.

### How you get there:

With products that set fast yet give you enough working time. Ingenious tools that streamline the procedure. And troubleshooting tips to help you ace every impression, so restorations fit.



Download 3M's tips at:  
[3M.com/GreatImpressions](https://www.3m.com/GreatImpressions)

## Get more confidence in every step.



3M Oral Care  
2510 Conway Avenue  
St. Paul, MN 55144-1000 USA  
Phone 1-800-634-2249  
Web 3M.com/dental

3M Deutschland GmbH  
Location Seefeld  
3M ESPE • ESPE Platz  
82229 Seefeld • Germany  
Info3MESPE@mmm.com  
www.3MESPE.com

3M, Impregum, Imprint and Pentamix are trademarks of 3M or 3M Deutschland GmbH. © 3M 2021. All rights reserved. (Rev. 8/2021)

**Warranty:** 3M warrants this product will be free from defects in material and manufacture at the time of purchase. 3M MAKES NO OTHER WARRANTIES INCLUDING ANY IMPLIED WARRANTY OF MERCHANTABILITY OR FITNESS FOR A PARTICULAR PURPOSE. User is responsible for determining the suitability of the product for user's application. If this product is defective within the warranty period, your exclusive remedy and 3M's sole obligation shall be repair or replacement of the 3M product.

**Limitation of Liability:** Except where prohibited by law, 3M will not be liable for any loss or damage arising from this product, whether direct, indirect, special, incidental or consequential, regardless of the theory asserted, including warranty, contract, negligence or strict liability.

**3M** Science.  
Applied to Life.™

Predictable impressions  
for your unpredictable day.



# A successful procedure starts with the right materials.

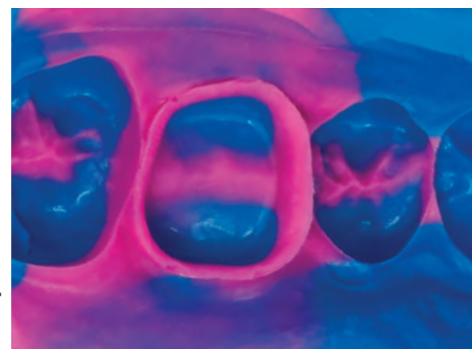
## Everyday impressions

### 3M™ Imprint™ 4 VPS Impression Material

Make precision an everyday occurrence. Imprint 4 VPS Impression Material provides:

- Sufficient time to load and seat the tray—no stressful race against the clock
- Help reduce chair time and stress for patients—Imprint 4 material has the shortest intraoral setting time among leading VPS fast-setting impression materials

3M™ Imprint™ 4 VPS Impression Material



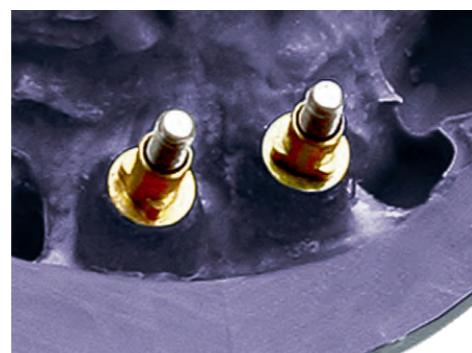
## For all challenges and implants

### 3M™ Impregum™ Polyether Impression Material

Helps remove the pressure of challenging cases. Impregum Polyether Impression Material gives you:

- Excellent moisture tolerance for void-free impressions, even in wet environments
- Sustained flowability throughout the entire working time
- Unique snap-set behavior—setting doesn't start until working time ends
- Classic materials offer all the working time you need for large cases
- Super Quick materials offer a 2-minute set time and improved taste for better patient comfort in small cases

3M™ Impregum™ Polyether Impression Material



3M™ Impregum™ Super Quick Polyether Impression Material



# Gain control of your impression from start to finish.

## Before the procedure



### Prepare in advance

The 3M™ Intra-Oral Syringe can be prefilled up to 12 hours in advance without the material setting, so you can prepare for your daily case load.



## The impression procedure

Efficient tissue prep and precise dispensing contribute to a successful procedure.



### Manage tissue gently

3M™ Astringent Retraction Paste, with its extra-fine tip, offers a faster and gentler way to retract gingival tissue and control bleeding.



### Syringe more precisely

Apply wash materials with extreme accuracy and less waste. The 3M™ Intra-Oral Syringe enables easy handling and intraoral access.



VPS material waste with the 3M Intra-oral Syringe — Green compared to a traditional mix tip.



### Skip the tray adhesive

Save time with the ready-to-use 3M™ Impression Tray. Simply fill directly from the mixing device. The unique design controls material flow, minimizing defects and voids. And the fleece strip replaces messy, time-consuming tray adhesives.



### Automix fast and easily

Cut down on steps, waste, mess and hand fatigue. With the push of a button, get a homogeneous mixture and deliver just the right amount, whether it's Imprint 4 VPS or Impregum Polyether materials.

- 3M™ Pentamix™ 3 Automatic Mixing Unit is small and fast, perfect for high-volume practices.
- Affordable 3M™ Pentamix™ Lite Automatic Mixing Unit is easy to carry and store, and ideal for practices with multiple operators.