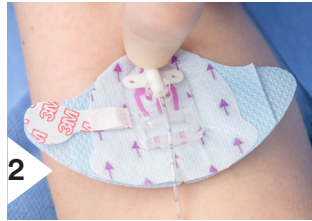


## Application



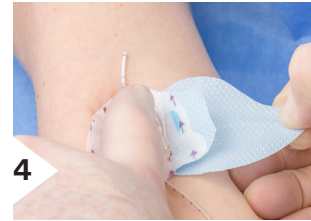
**1** Allow all preps and skin protectants to dry completely. Open package and remove sterile dressing and device. Put the 'Post-It' application guide somewhere visible.



**2** Orient the device with arrows pointing toward the insertion site. Place single-, double- or triple lumen catheters into the device securement post and weave lumen(s) under the single plastic arm.



**3** Remove the liner of the attached tape strip and secure lumen(s) to the device base.



**4** Position device on skin at the desired location. Pull and remove liner from one side of base to expose adhesive while holding the device in place. Pull and remove liner from the other side of base. Reposition the device if necessary to gain correct position.



**5** Peel the backing from the dressing, exposing the adhesive surface. Orient the adhesive to the skin and place the dressing so the transparent film covers the insertion site and the flat border edge of the dressing covers the plastic base of the device. Do not stretch dressing during application.



**6** Remove the frame delivery system whilst applying firm pressure to the dressing and dressing edges to enhance adhesion to the skin. Place the frame to the side.



**7** Remove the backing from securement strip. Lift the catheter lumen(s) and apply the notched end of the securement strip under the catheter lumen(s) and over the dressing edge ensuring all of the securement device is covered. Apply pressure to enhance adhesion. Remove the frame delivery system.



**8** Document dressing change on the documentation label. Place the documentation label on top of the dressing over the catheter lumen(s) to close the system. Apply pressure to enhance adhesion.

## Removal



**1** Remove documentation label. Lift catheter lumens, exposing the notch of the perforated tape strip. Gently pull apart the perforated tape strip either side of the catheter.



**2** Utilising the low and slow removal technique, slowly start removing the tape strips and dressing, as one layer, toward the insertion site until the dressing is beyond the securement device.



**3** Remove the device tape strip from the catheter lumen(s) and stick to one side to prevent intrusion. Unhook the catheter from under the fixed arm and from out of the securement post.



**4** Secure the catheter with one hand and use your other hand to remove the device from the patient's skin. Clean the skin, allow to dry and apply a new device. Once secure, remove the remaining dressing 'low & slow', clean the area and apply a new dressing.