



TURNOUT  
GEAR CATALOG

ATHLETIX



## CONTENTS

HISTORY OF INNOVATION ..... 2

TURNOUT GEAR

- ATHLETIX™ ..... 4
- G-XTREME® 3.0 ..... 8
- IH™ READY ..... 12
- A NEW DIMENSION IN FIT: SHAPE ..... 14
- REACTION® ..... 16
- G-XCEL® ..... 20
- CLASSIX® ..... 24
- CLASSIX® METRO™ ..... 25

I RISE TO EVERY CHALLENGE.

# ATHLETE



**Nomex.** **Kevlar.**

An unstoppable combination of strength and inherent flame resistance.



# 130 YEARS OF INNOVATION

Globe invented turnout gear 130 years ago. Today we still deliver the most advanced, best-fitting, and longest-lasting protection by listening to our customers, creating breakthrough designs, and applying the engineering skills of the nation's most trusted manufacturer.

Our owners, our employees, and our dealers all share a passion for building "Athletic Gear for Firefighters" in their choice of styles, materials, and options. And no matter what challenges tomorrow's firefighters face, they can be sure that Globe will continue to be there to protect them.

**1887** Globe Manufacturing Company is founded in Lynn, MA. Courtland F.H. Freese buys the company and moves it to Pittsfield, NH, which remains its headquarters to this day.

**1918** Globe receives a patent for a waterproof coat using an outer shell, a waterproof barrier, and a thermal lining—the same system still used today by all manufacturers of turnout gear.

**1953** Globe is the first to use 3M™ Scotchlite™ reflective trim to add visibility to its turnout gear.

**1966** Globe introduces DuPont NOMEX® inherently flame-resistant fabric.

**1975** Globe is a charter member of the National Fire Protection Association, creating the first NFPA 1971 Standard for Protective Clothing for Structural Fire Fighting. Globe becomes the first to comply with this new standard for every turnout sold.

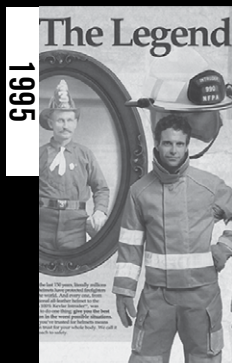
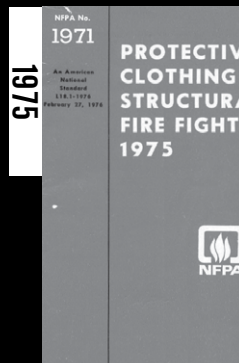
**1985** Globe introduces two state-of-the-art performance fabrics: PBI® for outer shells and waterproof, breathable Gore-Tex® fabric for moisture barriers.

**1991** Globe brings ergonomic design to turnout gear by launching the revolutionary GX-7™, which rapidly becomes the most popular turnout gear in the fire service.

**1993** The fourth generation of the founding Freese family takes over the ownership and management of Globe. Gef (left), Rob (middle), and Don (right).

**1994** Globe is the first manufacturer of turnouts to achieve ISO 9001 Certification.

**1995** Globe acquires Cairns Protective Clothing.



**2000** **2003** **2005** **2006** **2007** **2008** **2009** **2012** **2015** **2016** **2017**

Recognizing that the rescue component of firefighters' jobs continues to grow, Globe introduces Globe LifeLine—the right gear for the job. Globe implements Lean Manufacturing, dramatically improving efficiency and reducing delivery times.

Globe launches G-XTREME®—the world's most advanced turnout gear—designed to move the way the human body moves without restriction.

REACTION® joins the Globe Cairns family, with its patented collar that attaches the liner to the outside of the jacket and adds length and fullness where the body bends.

Globe introduces "Athletic Footwear for Firefighters," with its remarkably flexible, cushioned, and contoured construction, to choruses of "Wow."

Globe launches IH™ Pants—integrating a Class 2 internal seat harness with floating, load-equalizing leg loops into turnout gear.

Globe introduces G-XCEL® and RSX™ turnout gear styles—serious performance and great value.

Another new Globe turnout style—CLASSIX®. Value-priced turnout gear with a nod to the traditional.

G-XTREME® introduces a whole new dimension in fit—SHAPE. Now your gear can really fit your body—without extra bulk and without restriction—so that you can perform your job better.

Globe introduces the evolution of Athletic Gear for Firefighters. The new G-XTREME® 3.0 is completely retailored from collar to cuff to provide even less restriction.

Globe previews the future of turnout gear—ATHLETIX™. New material technology enables the all-new athletic design with stretch fabrics that allow closer, body-contoured fit to provide unprecedented range of motion with less bulk, more flexibility, and lighter weight.

MSA acquires Globe Manufacturing Company to continue the Globe tradition of innovation.



# ATHLETIX™ JACKET



2016 IFAI AWARD OF  
**EXCELLENCE**  
INTERNATIONAL ACHIEVEMENT AWARDS



**LESS BULKY, SOFTER & MORE ADJUSTABLE COLLAR** interfaces better with hood and helmet and reduces head restriction.



**STRETCH PANELS** in the thermal liner work with the stretch outer shell to provide maximum range of motion and minimum restriction.



**DRD OPENING IN THE COLLAR** takes bulk out of the upper back and allows better access above the SCBA.



**ELASTICIZED SIDE PANELS** provide flexible, more athletic fit at the waist.



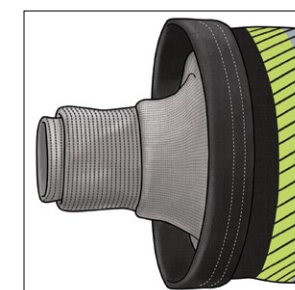
**ARTICULATED ELBOWS** for body-contoured fit with minimum restriction.



**OVERLAPPING FRONT CLOSURE WITH OPTIONAL ZIPPERGRIPPER™** to reduce bulk and permit quicker and easier donning and doffing.



**CARGO POCKETS WITH GRIP TABS** for quicker and easier access to all your stuff in the minimum amount of time.



**TELESCOPING SLEEVE BAND WITH DOUBLE WRISTERS** keeps water out and adds thermal protection.

## ATHLETIX™ JACKET

New material technology enables all-new athletic design with stretch fabrics that allow closer, body-contoured fit to provide unprecedented range of motion with less bulk, more flexibility, and lighter weight.

## MATERIALS

**NEW KOMBAT™ STRETCH PBI®/KEVLAR®** fabric allows closer, less bulky fit with unprecedented range of motion and more flexibility, while providing premium thermal break open protection.

**NEW NOMEX® NANO** thermal barrier material is thinner, lighter, more flexible, more breathable, and quicker drying.

**NEW 3M™ SCOTCHLITE™ COMFORT TRIM** reflective material is segmented and heat sealed to be lighter, more flexible, and breathable without sacrificing visibility.

**GORE® CROSSTECH® BLACK** moisture barrier provides the highest breathability in the widest range of environmental conditions to reduce heat stress.

## JACKET FEATURES

**MORE STREAMLINED DESIGN** with vertical seaming reduces oversize in front chest, bulk under SCBA, and stiffness in front closure.

**YOCCO™ DRAG RESCUE DEVICE** is easy to deploy when you need it, out of the way when you don't.

**EXTENDED BACK** option allows you to choose to extend the back by 3" or 6" for additional overlap and lettering below the SCBA.

**LINER ACCESS OPENING** allows for easy access between the layers.

**NEW, MORE FLEXIBLE SEAMS** are safety-stitched and double-needle top-stitched for strength but are less bulky and lay flatter.

Because ATHLETIX™ is loaded with standard features and the nature of the stretch outer shell fabric, **OPTIONS** are limited. Please inquire.

**MEN'S & WOMEN'S SIZES:** Chest, Length, and Sleeve.



Certified to NFPA 1971 (Structural Fire Fighting).

MADE IN THE USA

# ATHLETIX™ PANTS



2016 IFAI AWARD OF  
**EXCELLENCE**  
INTERNATIONAL ACHIEVEMENT AWARDS



**LOWER RISE, LESS BULKY DESIGN** fits closer to your body, and deeper fly opening permits quicker and easier donning and doffing.



**BANDED INSEAM DESIGN** allows stretch in all directions and reduces binding in the crotch.



**STRETCH PANELS** in the thermal liner work with the stretch outer shell to provide maximum range of motion and minimum restriction.



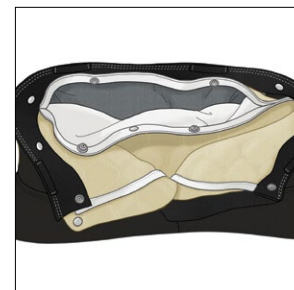
**ELASTICIZED SIDES** and one-hand adjustable belt closure provide flexible, more athletic fit at the waist.



**ARTICULATED KNEES** with cathedral knee patches and SILIZONE® knee pads are built for unrestricted and protected crawling.



**ANGLED SIDE POCKETS WITH GRIP TABS** for easier access to all your stuff in the minimum amount of time.



**LINER ACCESS OPENING** allows for easy access between the layers.



**PADDED H-BACK RIPCORD SUSPENDERS** attach to horizontal loops, so there is no metal hardware to dig in or pull out.

## MATERIALS

**NEW KOMBAT™ STRETCH PBI®/KEVLAR®** fabric allows closer, less bulky fit with unprecedented range of motion and more flexibility, while providing premium thermal break open protection.

**NEW NOMEX® NANO** thermal barrier material is thinner, lighter, more flexible, more breathable, and quicker drying.

**NEW 3M™ SCOTCHLITE™ COMFORT TRIM** reflective material is segmented and heat sealed to be lighter, more flexible, and breathable without sacrificing visibility.

**GORE® CROSSTECH® BLACK** moisture barrier provides the highest breathability in the widest range of environmental conditions to reduce heat stress.

## PANTS FEATURES

**REVERSE BOOT CUT** is shorter in the back to avoid premature cuff wear.

**NEW, MORE FLEXIBLE SEAMS** are safety-stitched and double-needle top-stitched for strength but are less bulky and lay flatter.

Because ATHLETIX™ is loaded with standard features and the nature of the stretch outer shell fabric, **OPTIONS** are limited. Please inquire.

**MEN'S & WOMEN'S SIZES:** Waist and Inseam.



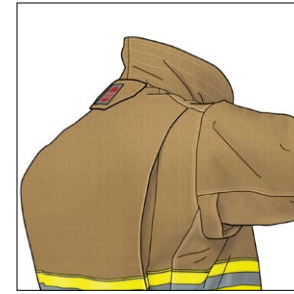
Certified to NFPA 1971 (Structural Fire Fighting).

MADE IN THE USA

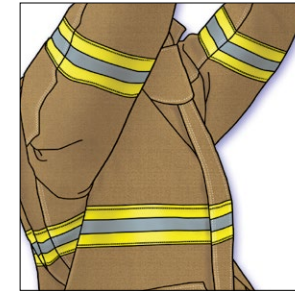
# G-XTREME® 3.0 JACKET



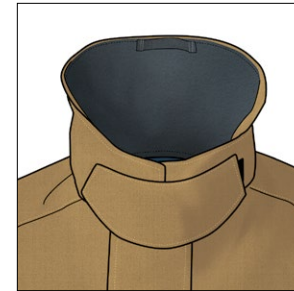
Shown with optional American flag, cuff reinforcements made from outer shell fabric, and grey wristers.



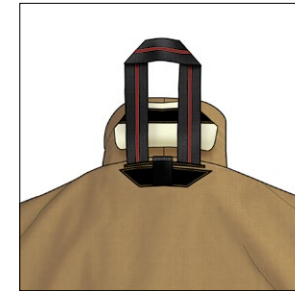
**AXTION® BACK** adds length across your shoulders when you work in front of you.



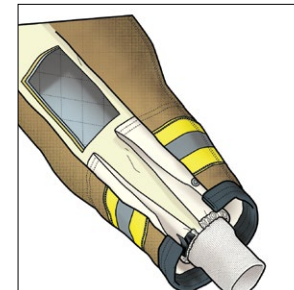
**AXTION® SLEEVE** provides extra length when you reach.



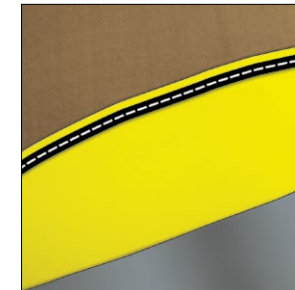
**FREE-HANGING THROAT TAB** stays out of your way when not deployed.



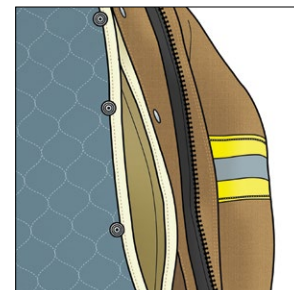
**YOCCO™ DRAG RESCUE DEVICE** is easy to deploy when you need it, out of the way when you don't.



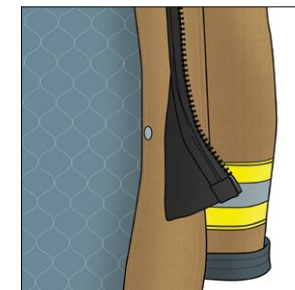
**TELESCOPING SLEEVE WELLS** keep water out and add thermal protection.



**TRIMTRAX® THREAD PROTECTION** with patented cording lasts far longer on sewn on trim than conventional stitching.



**LINER ACCESS OPENING** allows for easy access between the layers.



Optional **ZIPPERGRIPPER™** (patent pending) makes starting the zipper a breeze.

## G-XTREME® 3.0 JACKET

With all the features of our original G-XTREME®, including Globe's exclusive AXTION® Back and Sleeve, the updated G-XTREME® 3.0 jacket is retailored in the chest, shoulder, and sleeve for even more mobility. The lower collar with a deeper neck opening is more flexible, less restrictive, and better fitting, even with your hood on. And like the original, G-XTREME® 3.0 comes in SHAPES to fit your body better.

## MORE STANDARD FEATURES

**THERMALLY ENHANCED UPPER BODY** is oversized for more coverage.

**CONTOURED SLEEVES** are ergonomically curved to work with you—not against you.

**ONE-PIECE CONTOURED COLLAR** eliminates bulk and maintains ergonomic shape when flipped up or folded down.

**EXPANSION CARGO/HANDWARMER POCKETS** are reinforced with KEVLAR® fabric inside and NOMEX® fleece behind.

**GENEROUS LINER POCKET** is lined with moisture barrier.

**EXTENDED BACK** option allows you to choose to extend the back by 3" or 6" for additional overlap and lettering below the SCBA.

**DOUBLE-STITCHED SEAMS** with 8–10 stitches per inch for longer service life.

Your choice of **MATERIALS**: Outer Shells, Moisture Barriers, Thermal Liners, Reinforcements, Reflective Trim, and Lettering.

Your choice of **OPTIONS**: Closures, Pockets, Holders/Clips/Straps, Patches, and Sleeve Wells/Wristers.

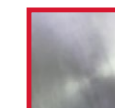
**MEN'S SIZES**: Chest, Length, Shape, and Sleeve.

**WOMEN'S SIZES**: Chest, Length, and Sleeve.



Certified to NFPA 1971 (Structural Fire Fighting).

MADE IN THE USA

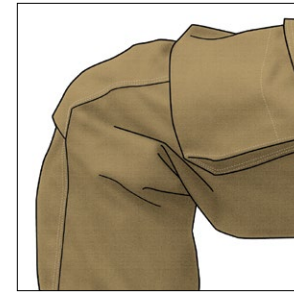


ALSO AVAILABLE IN PROXIMITY

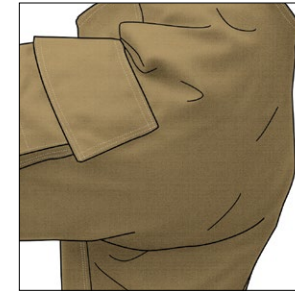
# G-XTREME® 3.0 PANTS



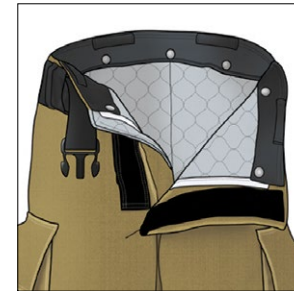
Shown with optional DRAGONHIDE® reinforcements on knees and cuffs and SILIZONE® knee padding on liner.



**AXTION® KNEE** adds length over the knee so you can step up, sit down, kneel, or crawl freely.



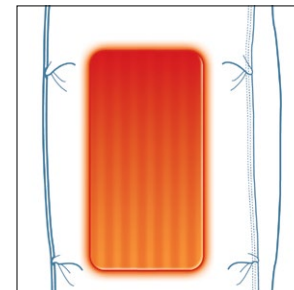
**AXTION® SEAT** adds length in the seat to allow you to bend at the waist and knees freely.



**ADJUSTABLE BELT CLOSURE** transfers weight to your hips and makes the pants fit like a pair of jeans.



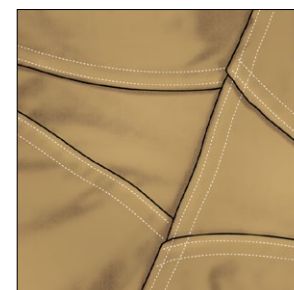
**PADDED H-BACK RIPCORD SUSPENDERS** attach to horizontal loops so there is no metal hardware to dig in or pull out.



**THERMALLY ENHANCED KNEES** add a layer of thermal and moisture barrier to protect this high-compression area.



Optional **SILIZONE® KNEE PADDING** on liner.



**DIAMOND CROTCH GUSSET** distributes stress in both shell and liner for durability.



**LINER ACCESS OPENING** allows for easy access between the layers.

## G-XTREME® 3.0 PANTS

In this latest release of our best-selling style, we've retailored the waist, seat, and thigh for less bulk, while making these pants much easier to get on and off. With all the features of our original G-XTREME® including Globe's exclusive AXTION® Seat and Knee, these pants fit like a pair of jeans and let you make all the right moves. And like the original, G-XTREME® 3.0 comes in SHAPES to fit your body better.

## MORE STANDARD FEATURES

**EXPANSION CARGO POCKETS** are reinforced with KEVLAR® fabric inside.

**INDEPENDENT STRETCH WAISTBAND** for unrestricted fit and no-gap protection with liner.

**REVERSE BOOT CUT** is shorter in the back to avoid premature cuff wear.

**VERTICAL FLY CLOSURE** with hook and loop makes for fast and secure donning.

Optional **DRAGONHIDE® REINFORCEMENTS** on knees and cuffs.

**TRIMTRAX® THREAD PROTECTION** with patented cording lasts far longer on sewn on trim than conventional stitching.

**DOUBLE-STITCHED SEAMS** with 8–10 stitches per inch for longer service life.

Your choice of **MATERIALS**: Outer Shells, Moisture Barriers, Thermal Liners, Reinforcements, Reflective Trim, and Lettering.

Your choice of **OPTIONS**: Closures, Pockets, Holders/Clips/Straps, Suspenders, and Harnesses/Loops/Pockets.

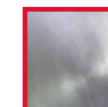
**MEN'S SIZES**: Waist, Shape, and Inseam.

**WOMEN'S SIZES**: Waist and Inseam.



Certified to NFPA 1971 (Structural Fire Fighting).

MADE IN THE USA



ALSO AVAILABLE IN PROXIMITY

# IH™ READY PANTS



Shown with optional DRAGONHIDE® reinforcements on knees and cuffs and SILIZONE® knee padding on liner.



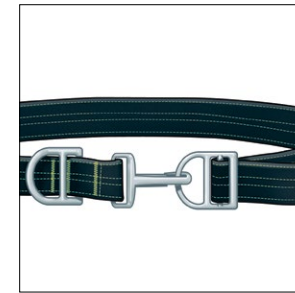
Optional **SERIES 1 INTERNAL HARNESS** with floating leg loops and low-profile waist buckle.



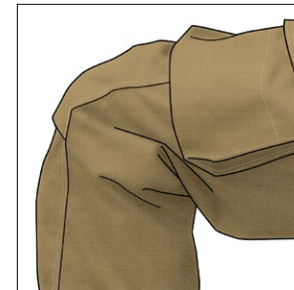
Optional **SERIES 2 INTERNAL HARNESS** with floating leg loops, hook and dee closure, and choice of auto-lock carabiner.



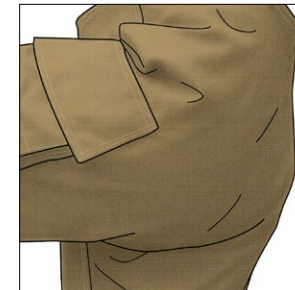
Optional **SERIES 3 INTERNAL HARNESS** with floating leg loops and a hook and dee style closure.



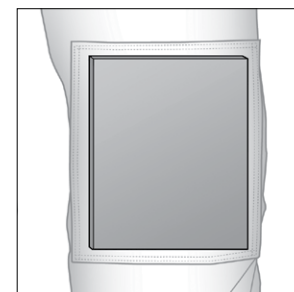
Optional **ESCAPE BELT** replaces standard belt closure.



**AXTION® KNEE** adds length over the knee so you can step up, sit down, kneel, or crawl freely.



**AXTION® SEAT** adds length in the seat to allow you to bend at the waist and knees freely.



Optional **SILIZONE® FOAM KNEES** make crawling almost heavenly and don't absorb water.



**PADDED H-BACK RIPCORD SUSPENDERS** attach to horizontal loops so there is no metal hardware to dig in or pull out.

## IH™ READY PANTS

Your choice of internal Class 2 Seat Harnesses or a Personal Escape Belt certified to NFPA 1983 (Life Safety Rope and Equipment). Harnesses feature our patented floating leg loop system. Leg loops stay down out of your business except when you load the harness, pulling them up into the correct seat position to equalize the load. Leg loops are hardware free, so there's nothing to dig into your legs. Made from KEVLAR®, these harnesses meet NFPA 1971 (Structural Fire Fighting) requirements for flame and heat resistance when installed in the pants. Not ready to upgrade to an internal harness? Add it later without alteration.

## MORE STANDARD FEATURES

**ADJUSTABLE BELT CLOSURE** makes the pants fit like jeans or can be replaced by your choice of harnesses or belts, initially or down the road.

**VERTICAL FLY CLOSURE** with hook and loop makes for fast and secure donning.

**INDEPENDENT STRETCH WAISTBAND** for unrestricted fit and no-gap protection with liner.

**LINER ACCESS OPENING** for easy access between the layers.

**THERMALLY ENHANCED KNEES** add a layer of thermal and moisture barrier to protect this high-compression area.

**EXPANSION CARGO AND ROPE POCKETS** with hook and loop hardware straps and reinforced with KEVLAR® fabric inside.

**REVERSE BOOT CUT** is shorter in the back to avoid premature cuff wear.

**TRIMTRAX® THREAD PROTECTION** with patented cording lasts far longer on sewn on trim than conventional stitching.

**DOUBLE-STITCHED SEAMS** with 8–10 stitches per inch for longer service life.

Your choice of **MATERIALS**: Outer Shells, Moisture Barriers, Thermal Liners, Reinforcements, and Reflective Trim.

Your choice of **OPTIONS**: Closures, Pockets, Holders/Clips/Straps, and Harnesses/Loops/Pockets.

**MEN'S SIZES**: Waist, Shape, and Inseam.

**WOMEN'S SIZES**: Waist and Inseam.



Certified to NFPA 1971 (Structural Fire Fighting).

MADE IN THE USA



# A New Dimension in Fit: SHAPE

# Available in G-XTREME® 3.0 and IH™ READY

## RELAXED SHAPE

Many firefighters choose a relaxed shape for maximum mobility. That's one reason why our G-XTREME® 3.0 Pants are so popular—added length in the knee and the seat and added fullness in the seat and thigh give it a less-restrictive, relaxed shape.

## REGULAR SHAPE

Those who are trimmer may appreciate this new, closer-fitting, regular shape with added length in the knee and the seat but with less fullness in the seat and thigh.

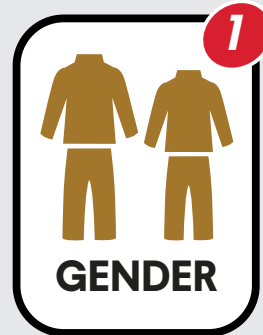


## TAPERED SHAPE

An athletic, tapered shape fits firefighters with a larger chest and shoulders without adding bulk around the middle. Our most popular shape.

## STRAIGHT SHAPE

Those with a broader build or who plan to wear a seat harness or other equipment around their waist under the jacket will appreciate the fuller, straight shape.



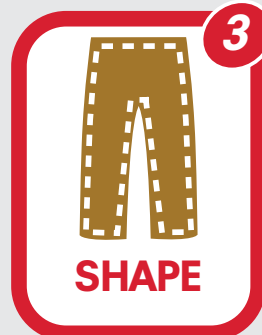
**GENDER**

MEN'S or  
WOMEN'S



**WAIST**

EVEN SIZES



**SHAPE**

MEN'S RELAXED  
OR  
REGULAR



**INSEAM**

EVEN SIZES



**CHEST**

EVEN SIZES



**LENGTH**

MEN'S: 29",  
32", or 35"  
WOMEN'S:  
26", 29"



**SHAPE**

MEN'S STRAIGHT  
OR  
TAPERED



**SLEEVE**

1"  
INCREMENTS

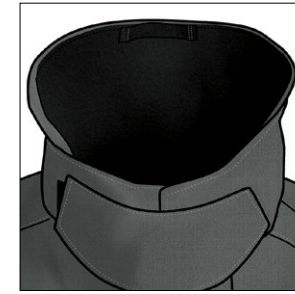
# REACTION<sup>®</sup> JACKET



Shown with optional American flag, radio pocket, and cuff reinforcements made from outer shell fabric.



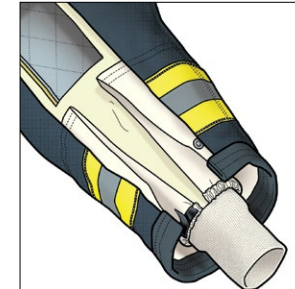
**COLLARBREAK™ ATTACHMENT SYSTEM** with the collar sewn to the liner instead of the outer shell for a completely smooth fit across the neck.



**FREE-HANGING THROAT TAB** stays out of your way when not deployed.



**AXTION<sup>®</sup> SLEEVE** provides extra length when you reach.



**TELESCOPING SLEEVE WELLS** keep water out and add thermal protection.



**YOCO™ DRAG RESCUE DEVICE** is easy to deploy when you need it, out of the way when you don't.



**THERMALLY ENHANCED UPPER BODY** is oversized for more coverage.



**EXTENDED BACK** option allows you to choose to extend the back by 3" or 6" for additional overlap and lettering below the SCBA.



## REACTION<sup>®</sup> JACKET

REACTION<sup>®</sup> combines the latest advances in ergonomic design—like AXTION<sup>®</sup> Sleeves—with customer-favorite features—like COLLARBREAK™—to put it all together for you.

## MORE STANDARD FEATURES

Semi-bellows **CARGO/HANDWARMER POCKETS** lined with KEVLAR<sup>®</sup> fabric inside and NOMEX<sup>®</sup> fleece behind hold a lot but don't bulge out in the front.

**CONTOURED SLEEVES** are ergonomically curved to work with you—not against you.

**AXTION<sup>®</sup> LINER** allows unrestricted movement and easy access between the layers.

**GENEROUS LINER POCKET** is lined with moisture barrier.

**TRIMTRAX<sup>®</sup> THREAD PROTECTION** with patented cording lasts far longer on sewn on trim than conventional stitching.

**DOUBLE-STITCHED SEAMS** with 8–10 stitches per inch for longer service life.

Your choice of **MATERIALS**: Outer Shells, Moisture Barriers, Thermal Liners, Reinforcements, Reflective Trim, and Lettering.

Your choice of **OPTIONS**: Closures, Pockets, Holders/Clips/Straps, Patches, and Sleeve Wells/Wristers.

**MEN'S & WOMEN'S SIZES**: Chest, Length, and Sleeve.



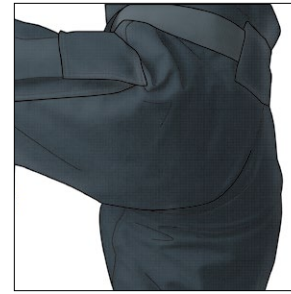
Certified to NFPA 1971 (Structural Fire Fighting).

MADE IN THE USA

# REACTION® PANTS



Shown with optional DRAGONHIDE® reinforcements on knees and cuffs and SILIZONE® knee padding on liner.



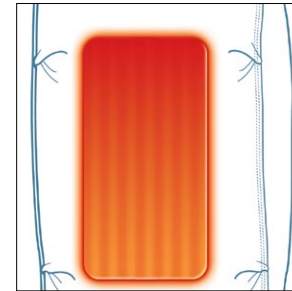
**AXTION® SEAT** adds length in the seat to allow you to bend at the waist and knees freely.



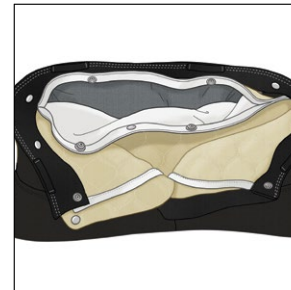
**AXTION® KNEE** adds length over the knee so you can step up, sit down, kneel, or crawl freely.



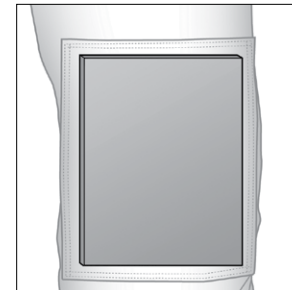
**ADJUSTABLE BELT CLOSURE** transfers weight to your hips and makes the pants fit like a pair of jeans.



**THERMALLY ENHANCED KNEES** add a layer of thermal and moisture barrier to protect this high-compression area.



**LINER ACCESS OPENING** for easy access between the layers.



Optional **SILIZONE® FOAM KNEES** make crawling almost heavenly and don't absorb water.



**XPS™ EXTENSION PANEL SYSTEM** allows you to choose to extend the height by 3" to maintain overlap with shorter jackets.



**PADDED H-BACK RIPCORD SUSPENDERS** attach to horizontal loops so there is no metal hardware to dig in or pull out.

## REACTION® PANTS

When called into action, you need to fight the fire—not your gear. That's when the added length and fullness in the AXTION® Seat and Knee combine to allow you to move unlike any other turnout gear. And with its adjustable belt, REACTION® fits you like you always wanted—like a pair of jeans.

## MORE STANDARD FEATURES

**EXPANSION CARGO POCKETS** with angled flaps for easy access, reinforced with KEVLAR® fabric inside.

**INDEPENDENT STRETCH WAISTBAND** for unrestricted fit and no-gap protection with liner.

**DIAMOND CROTCH GUSSET** distributes stress in both shell and liner for durability.

**REVERSE BOOT CUT** is shorter in the back to avoid premature cuff wear.

**VERTICAL FLY CLOSURE** with hook and loop makes for fast and secure donning.

**TRIMTRAX® THREAD PROTECTION** with patented cording lasts far longer on sewn on trim than conventional stitching.

**DOUBLE-STITCHED SEAMS** with 8–10 stitches per inch for longer service life.

Your choice of **MATERIALS**: Outer Shells, Moisture Barriers, Thermal Liners, Reinforcements, and Reflective Trim.

Your choice of **OPTIONS**: Closures, Pockets, Holders/Clips/Straps, Suspenders, and Harnesses/Loops/Pockets.

**MEN'S & WOMEN'S SIZES**: Waist and Inseam.



Certified to NFPA 1971 (Structural Fire Fighting).

MADE IN THE USA

# G-XCEL® JACKET



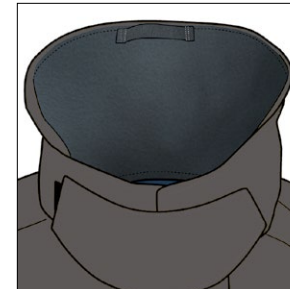
Shown with optional American flag, radio pocket, and cuff reinforcements made from outer shell fabric.



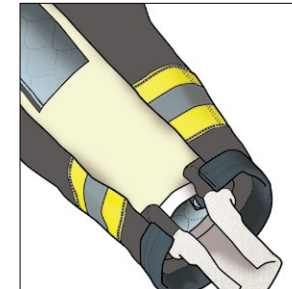
Standard **LONGER BACK** for more overlap coverage and space for lettering below the SCBA.



**AXTION® SLEEVE** provides extra length when you reach.



**FREE-HANGING THROAT TAB** stays out of your way when not deployed.



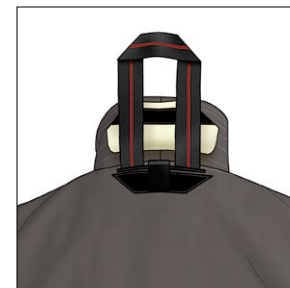
**TELESCOPING SLEEVE BAND** keeps debris and water out.



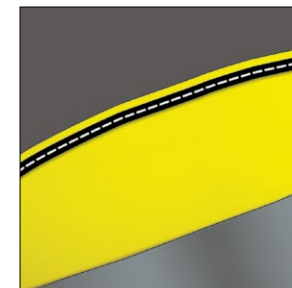
**LINER ACCESS OPENING** is oversized for easy access between the layers.



**CARGO/HANDWARMER POCKETS** lined with KEVLAR® fabric inside and NOMEX® fleece behind.



**YOCO™ DRAG RESCUE DEVICE** is easy to deploy when you need it, out of the way when you don't.



**TRIMTRAX® THREAD PROTECTION** with patented cording lasts far longer on sewn on trim than conventional stitching.

## G-XCEL® JACKET

Being lightweight and flexible are hallmarks of this all-new chassis. With a longer back and shorter front, you get more overlap where you need it with less where you don't. So everything about this contemporary design feels just right.

## MORE STANDARD FEATURES

**CONTOURED SLEEVES** are ergonomically curved to work with you—not against you.

Shorter **CONTOURED COLLAR** for easy interface with helmets.

**GENEROUS LINER POCKET** is lined with moisture barrier.

**DOUBLE-STITCHED SEAMS** with 8–10 stitches per inch for longer service life.

Your choice of **MATERIALS**: Outer Shells, Moisture Barriers, Thermal Liners, Reinforcements, Reflective Trim, and Lettering.

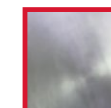
Your choice of **OPTIONS**: Closures, Pockets, Holders/Clips/Straps, Patches, and Sleeve Wells/Wristers.

**MEN'S & WOMEN'S SIZES**: Chest, Length, and Sleeve.



Certified to NFPA 1971 (Structural Fire Fighting).

MADE IN THE USA

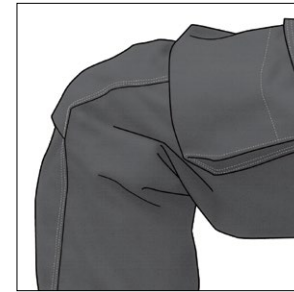


ALSO AVAILABLE IN PROXIMITY

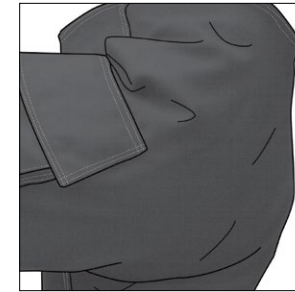
# G-XCEL® PANTS



Shown with optional belt, wide belt loops, DRAGONHIDE® reinforcements on knees and cuffs, and SILIZONE® knee padding on liner.



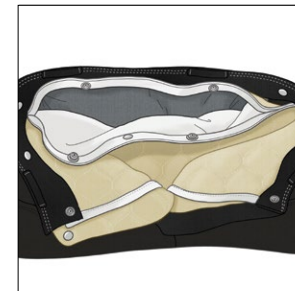
**AXTION® KNEE** adds length over the knee so you can step up, sit down, kneel, or crawl freely.



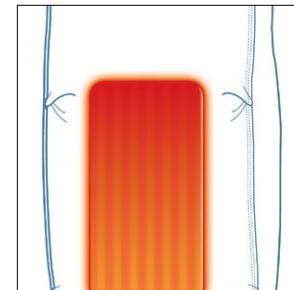
**AXTION® SEAT** adds length in the seat to allow you to bend at the waist and knees freely.



**VERTICAL FLY CLOSURE** with hook and loop and take-up straps or optional belt for fast and secure donning.



**LINER ACCESS OPENING** for easy access between the layers.



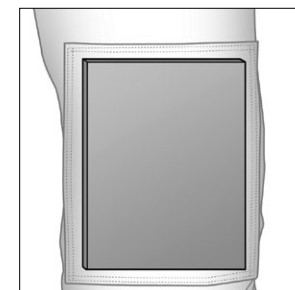
**THERMALLY ENHANCED KNEES** add a layer of thermal and moisture barrier to protect this high-compression area.



**PADDED H-BACK RIPCORD SUSPENDERS** attach to horizontal loops so there is no hardware to dig in or pull out.



**LEFT-HAND OPENING** available (as LH Pant) for left-opening external harnesses with optional harness loops.



Optional **SILIZONE® FOAM KNEES** make crawling almost heavenly and don't absorb water.

## G-XCEL® PANTS

This low-rise style provides a modern fit, and with the added length you need for mobility in the knee and seat to bend, the pants don't ride down. Together with the extended back on the jacket, you can maintain generous overlap even with these lower-rise pants.

## MORE STANDARD FEATURES

**EXPANSION CARGO POCKETS** are reinforced with KEVLAR® fabric inside.

**INDEPENDENT STRETCH WAISTBAND** for unrestricted fit and no-gap protection with liner.

**DIAMOND CROTCH GUSSET** distributes stress in both shell and liner for durability.

**REVERSE BOOT CUT** is shorter in the back to avoid premature cuff wear.

**TRIMTRAX® THREAD PROTECTION** with patented cording lasts far longer on sewn on trim than conventional stitching.

**DOUBLE-STITCHED SEAMS** with 8–10 stitches per inch for longer service life.

Your choice of **MATERIALS**: Outer Shells, Moisture Barriers, Thermal Liners, Reinforcements, and Reflective Trim.

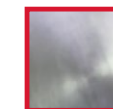
Your choice of **OPTIONS**: Closures, Pockets, Holders/Clips/Straps, Suspenders, and Harnesses/Loops/Pockets.

**MEN'S & WOMEN'S SIZES**: Waist and Inseam.



Certified to NFPA 1971 (Structural Fire Fighting).

MADE IN THE USA



ALSO AVAILABLE IN PROXIMITY

# CLASSIX® JACKET



## CLASSIX® JACKET

Our most affordable turnout gear, CLASSIX® delivers Globe quality at a value price. The drop-shoulder design jacket comes with a long list of standard features to make this far more than basic gear.

### MORE STANDARD FEATURES

**DROP-SHOULDER DESIGN** moves seam beyond the shoulder for improved reach and reduced coat ride up.

**SHORTER COLLAR** for better interface with helmet.

**DOUBLE SLEEVE WELLS** with NOMEX® wristers to keep water out and interface with all glove styles.

**EXTENDED BACK** option allows you to choose to extend the back by 3" or 6" for additional overlap and lettering below the SCBA.

**LINER ACCESS OPENING** for easy access between the layers.

**DOUBLE-STITCHED SEAMS** with 8–10 stitches per inch for longer service life.

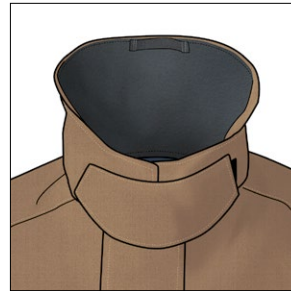
Your choice of **MATERIALS**: Outer Shells, Moisture Barriers, Thermal Liners, Reinforcements, Reflective Trim, and Lettering.

Your choice of **OPTIONS**: Closures, Pockets, Holders/Clips/Straps, Patches, and Sleeve Wells/Wristers.

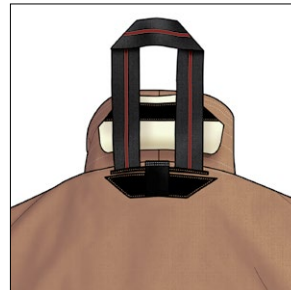
**MEN'S & WOMEN'S SIZES**: Chest, Length, and Sleeve.



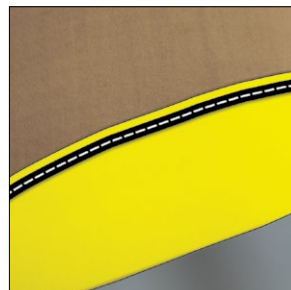
**DUAL-ACTION CARGO POCKETS** with KEVLAR® fabric reinforcement inside.



**FREE-HANGING THROAT TAB** stays out of your way when not deployed.



**YOCCO™ DRAG RESCUE DEVICE** is easy to deploy when you need it, out of the way when you don't.



**TRIMTRAX® THREAD PROTECTION** with patented cording lasts far longer on sewn on trim than conventional stitching.

## CLASSIX® METRO™ JACKET

This metro-inspired option set includes an extended back for additional overlap and lettering below the SCBA, expansion pockets, and telescoping sleeve band with two wristers – one on the outer shell and one on the liner with a thumb loop. And the jacket includes a host of standard CLASSIX® features.

### METRO™ SUGGESTED OPTIONS

**6" EXTENDED BACK** with lower trim band.

**2" x 10" x 6" EXPANSION POCKETS** with KEVLAR® fabric reinforcement pouch inside.

**HOOK AND DEE FRONT CLOSURE** with VELCRO® inside.

**CUFF REINFORCEMENTS** made from outer shell fabric.

**TELESCOPING SLEEVE BAND** with two grey NOMEX® wristers, one on the outer shell and one on the liner with a thumb loop.



Certified to NFPA 1971 (Structural Fire Fighting).

**MADE IN THE USA**



Shown with METRO™ suggested options.

# CLASSIX® PANTS



Shown with optional pockets and grey suede reinforcements on knees.

## CLASSIX® PANTS

Our most affordable turnout gear, CLASSIX® delivers Globe quality at a value price. The roomy, low-rise pants come with a long list of standard features to make this far more than basic gear.

## MORE STANDARD FEATURES

**INDEPENDENT WAISTBAND** for unrestricted fit and no-gap protection with liner.

**REVERSE BOOT CUT** is shorter in the back to avoid premature cuff wear.

**LINER ACCESS OPENING** for easy access between the layers.

**TRIMTRAX® THREAD PROTECTION** with patented cording lasts far longer on sewn on trim than conventional stitching.

**DOUBLE-STITCHED SEAMS** with 8–10 stitches per inch for longer service life.

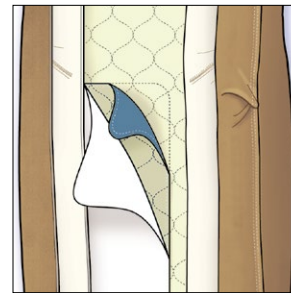
Your choice of **MATERIALS**: Outer Shells, Moisture Barriers, Thermal Liners, Reinforcements, and Reflective Trim.

Your choice of **OPTIONS**: Closures, Pockets, Holders/Clips/Straps, Suspenders, and Harnesses/Loops/Pockets.

**MEN'S & WOMEN'S SIZES**: Waist and Inseam.



**VERTICAL FLY** with hook and dee positive closure and take-up straps or optional belt.



**THERMALLY ENHANCED FLEX LINER KNEES** add mobility and a layer of thermal and moisture barrier to protect this high-compression area.



**DIAMOND CROTCH GUSSET** distributes stress in both shell and liner for durability.



**PADDED H-BACK RIPCORD SUSPENDERS** attach to horizontal loops so there is no hardware to dig in or pull out.

## CLASSIX® METRO™ PANTS

This metro-inspired option set includes expansion pockets, SILIZONE® knee padding, and DRAGONHIDE® reinforcements on the knees and cuffs. And the pants include a host of standard CLASSIX® features.

## METRO™ SUGGESTED OPTIONS

**2" x 10" x 10" EXPANSION POCKETS** with KEVLAR® fabric reinforcement pouch inside.

**TAKE-UP STRAPS** made from outer shell fabric with postman slide buckle.

**DRAGONHIDE® REINFORCEMENTS** on knees and cuffs.

**SILIZONE® KNEE PADDING** on liner.



Certified to NFPA 1971 (Structural Fire Fighting).

MADE IN THE USA



Shown with METRO™ suggested options.

Globe products are manufactured to meet or exceed industry standards. To the best of our knowledge, the information contained herein is accurate at the time of publishing; however, Globe Manufacturing Company, LLC, and its affiliates assume no liability for its accuracy or completeness. Users of Globe products must satisfy themselves by independent investigation that the products and materials they have selected are safe for their intended use. We have described certain hazards, but we cannot guarantee that these are the only hazards that users may encounter. No products, including garments and footwear, protect completely, even when new; their protective performance will decline with wear, tear, abrasion, and other damage associated with use.

DUPONT, NOMEX, KEVLAR, and designs are trademarks or registered trademarks of E.I. du Pont de Nemours and Company or its affiliates.

CROSSTECH, GORE, GORE-SEAM, and designs are trademarks of W.L. Gore & Associates, Inc.

3M and Scotchlite are trademarks of 3M, used under license in Canada.

YOCCO is a trademark of Yocco Enterprises, LLP.

CAIRNS is a registered trademark of the Trustees of the Cairns Trademark Trust.

VIBRAM and designs are registered trademarks of Vibram S.p.A.

PORON, XRD, and designs are trademarks or registered trademarks of Rogers Corporation.

PBI is a registered trademark of PBI Performance Products, Inc.

ARA-SHIELD and KOMBAT are trademarks or registered trademarks of TenCate Protective Fabrics USA.

NFPA and National Fire Protection Association are registered trademarks of the National Fire Protection Association.

UL and the UL logo are trademarks of UL LLC.

GLOBE, GLOBE FIREFIGHTER SUITS, GLOBE FOOTGEAR, ATHLETIX, AXTION, CLASSIX, COLLARBREAK, DRAGONHIDE, EMSRESCUE, G-XCEL, G-XTREME, HEELPORT, IH, METRO, ONYX, PREDATOR, REAXTION, SHADOW, SILIZONE, SUPRALITE, SUPREME, TECHRESCUE, TRIMTRAX, XPS, ZIPPERGRIPPER, and designs are registered trademarks or trademarks of Globe Holding Company, LLC.

Globe Turnout Gear is manufactured by Globe Manufacturing Company, LLC, or Globe Manufacturing Company - OK, LLC, and sold by Globe Manufacturing Company, LLC. Globe Rescue Gear is manufactured and sold by Globe LifeLine, LLC. Globe Boots are manufactured and sold by Globe Footwear, LLC.

© 2017 Globe Holding Company, LLC. Details and specifications are subject to change without notice. Printed in USA. 11/17

## Globe Manufacturing Company

37 Loudon Road  
Pittsfield, NH 03263

Tel: 800-232-8323  
603-435-8323

info@globefiresuits.com  
globeturnoutgear.com

**YOUR GLOBE DEALER**

