

FL500

REVISIONS						
ZONE	REV	CR	DESCRIPTION	BY	DATE	APPR
-	0	800000027815	PRODUCTION RELEASE	WJE	12JUN18	BM
-	1	800000036319	UPDATED APPROVALS / FIRE TYPE FIELD	SWR	28AUG19	SWR
-	2	800000039706	ALARM OUTPUT STANDARD CODE WAS 3	SWR	05MAR20	SWR

Sensitivity
 1 (Std) 100%
 2 75%
 3 50%

Time Delay
 1 2 SECOND DELAY
 2 4 SECOND DELAY
 3 8 SECOND DELAY
 4 (Std) 10 SECOND DELAY

Housing
 1 (Std) STAINLESS STEEL

Cable Entry
 1 (Std) 2x3/4" NPT
 2 2x25mm

Mounting Bracket
 0 Without Bracket
 1 (Std) With Bracket (p/n 71370-1)

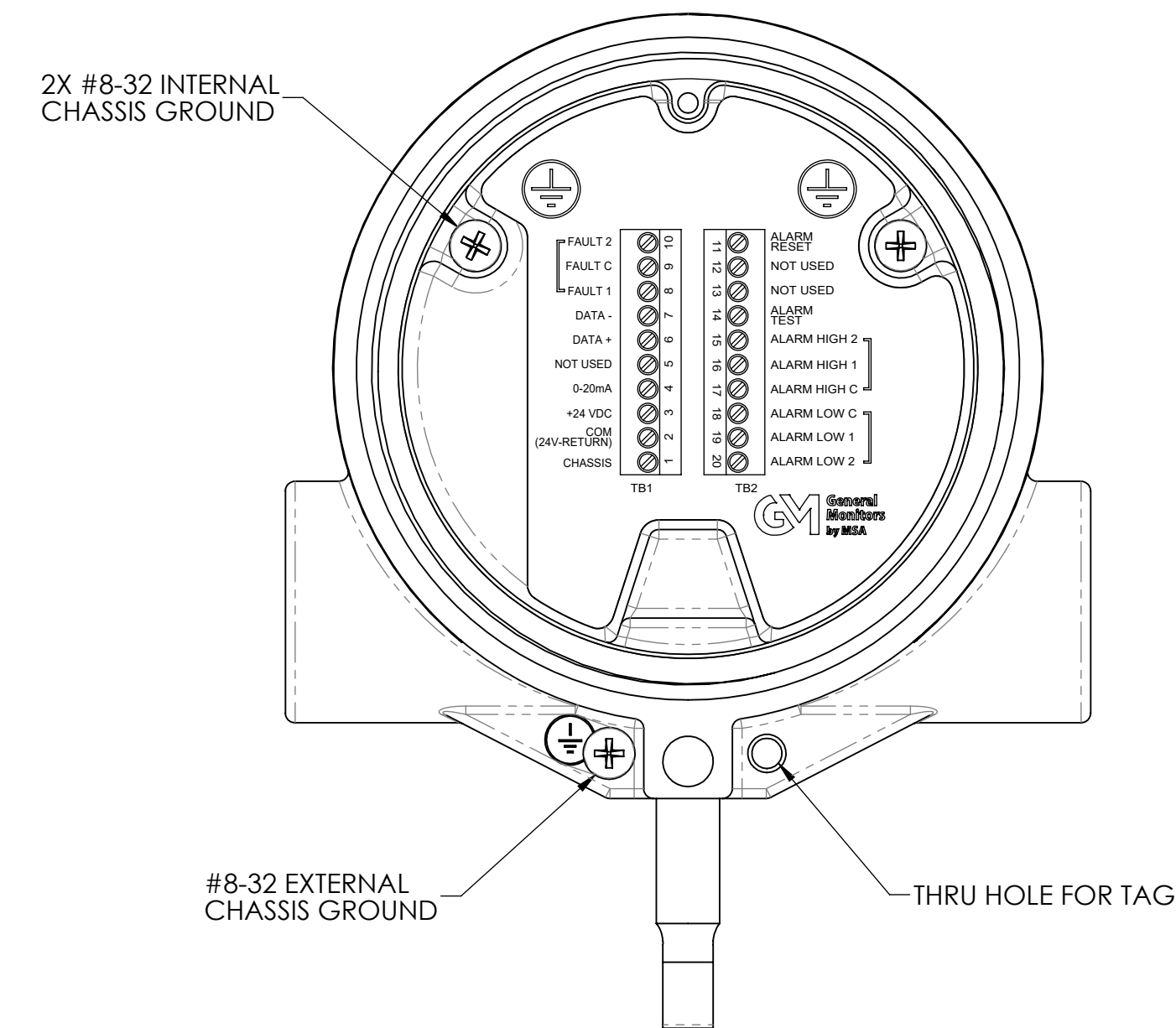
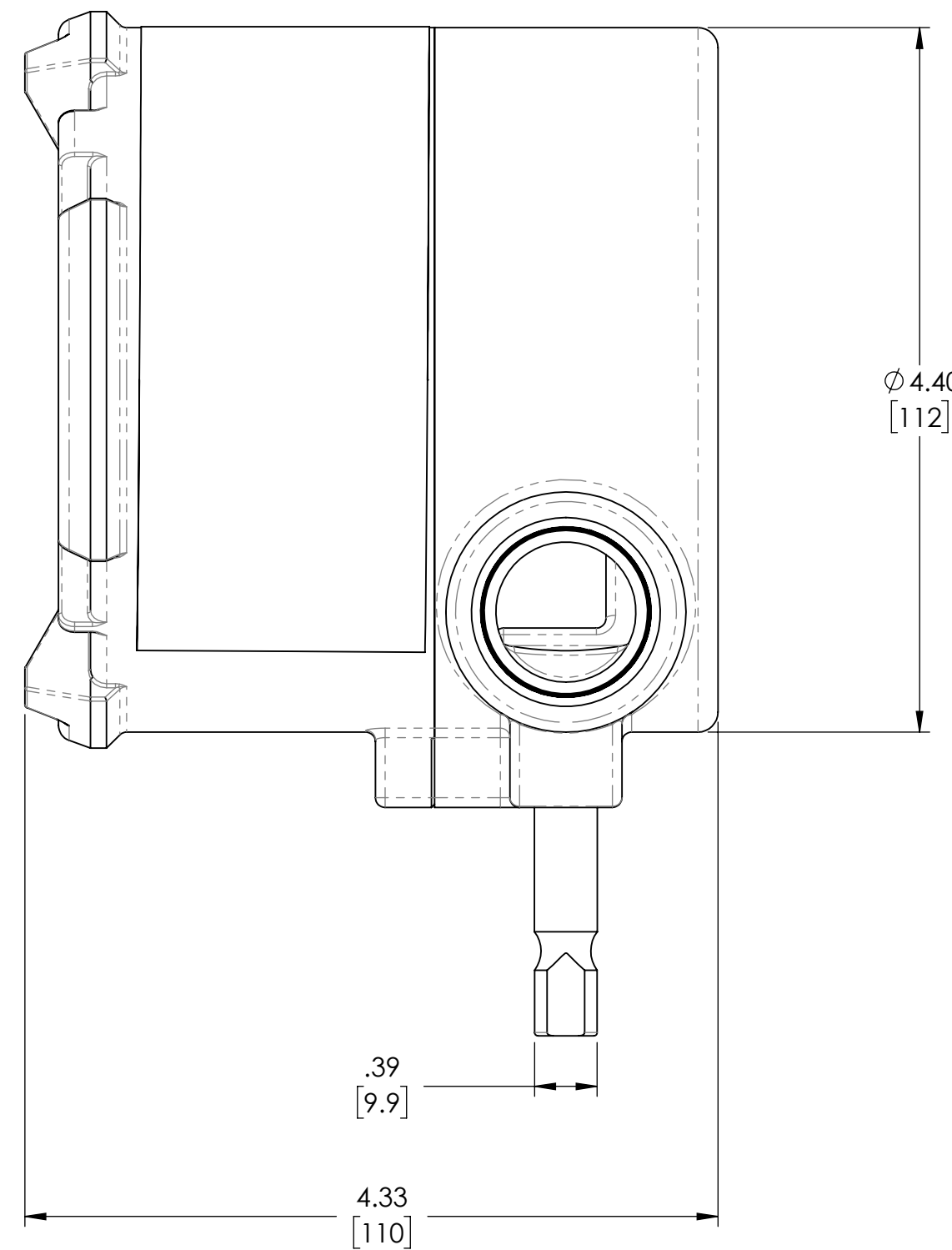
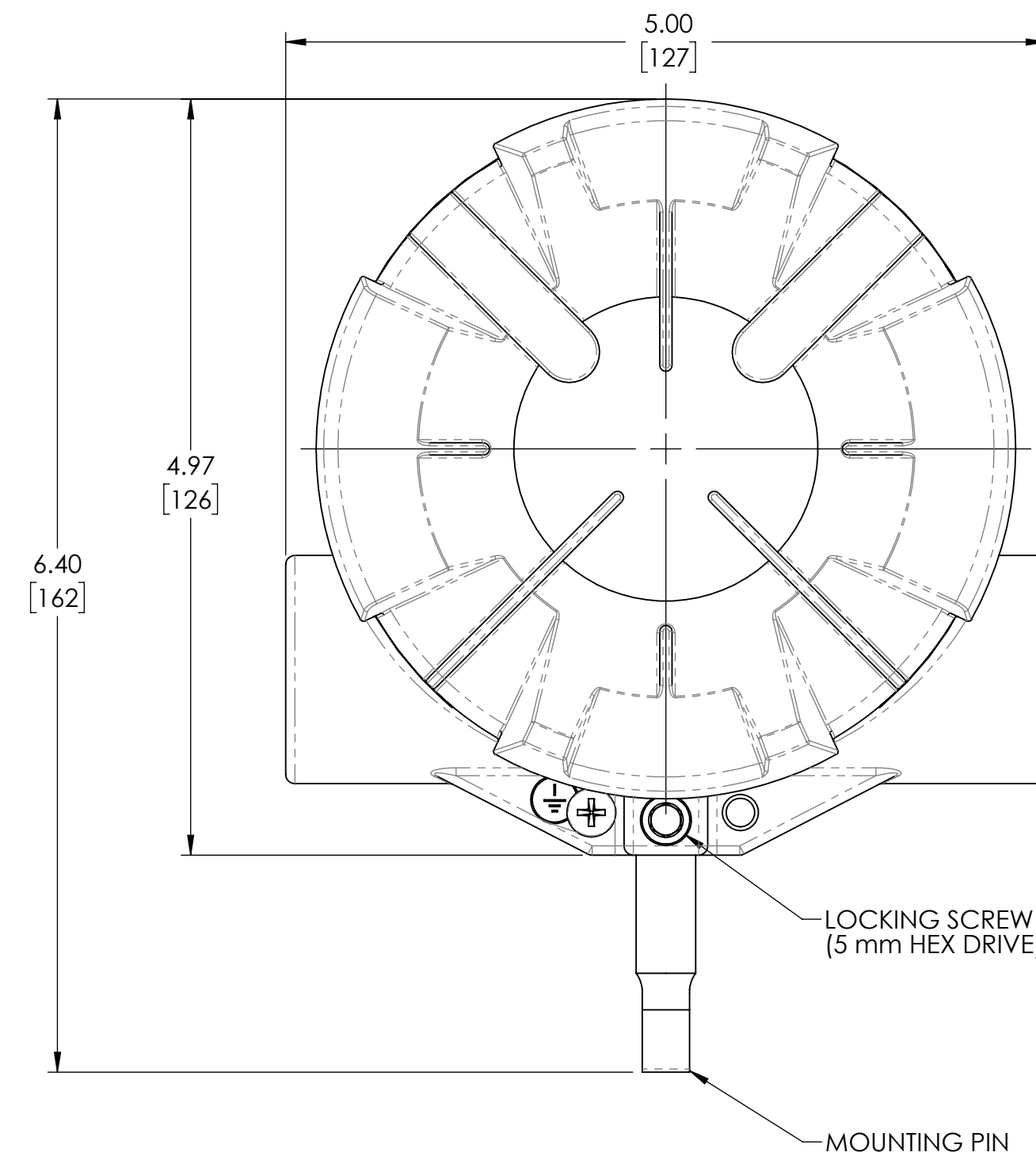
Approvals / Fire Type
 1 (Std) FM/CSA/ATEX/IECEx/INMETRO/JNIOOSH (Japan)
 2 CSA/ATEX/IECEx/JNIOOSH (Japan), HYDROGEN
 3 CCCF (China)

RELAY STATE - NC

- 1 LATCH ALARM/NON-LATCH WARN DE-ENERGIZED NO CHARGE
- 2 LATCH ALARM/NON-LATCH WARN ENERGIZED NO CHARGE
- 3 LATCH ALARM/LATCH WARN DE-ENERGIZED NO CHARGE
- 4 LATCH ALARM/LATCH WARN ENERGIZED NO CHARGE
- 5 (Std) NON-LATCH ALARM/NON-LATCH WARN DE-ENERGIZED NO CHARGE
- 6 NON-LATCH ALARM/NON-LATCH WARN ENERGIZED NO CHARGE
- 7 NON-LATCH ALARM/LATCH WARN DE-ENERGIZED NO CHARGE
- 8 NON-LATCH ALARM/LATCH WARN ENERGIZED

Alarm Output

- 1 4-20mA SOURCE CURRENT, RELAYS, SINGLE MODBUS, HART off
- 2 4-20mA SINK CURRENT, RELAYS, SINGLE MODBUS, HART off
- 3 3.5 mA HART, SOURCE CURRENT, RELAYS, SINGLE MODBUS
- 4 3.5 mA HART, SINK CURRENT, RELAYS, SINGLE MODBUS
- 5 (Std) 1.25 mA HART, SOURCE CURRENT, RELAYS, SINGLE MODBUS
- 6 1.25 mA HART, SINK CURRENT, RELAYS, SINGLE MODBUS



3. ENCLOSURE FINISH:
 - STAINLESS STEEL PASSIVATED, RED POLYESTER (TGIC) POWDER COAT

2. DETECTOR WEIGHT:
 - STAINLESS STEEL ENCLOSURE: 9.4 lb [4.3 kg]

1. DIMENSIONS ARE FOR REFERENCE ONLY.

NOTES: UNLESS OTHERWISE SPECIFIED

UNLESS OTHERWISE SPECIFIED	The information and technical data disclosed by this document may be used and disseminated only for the purposes and to the extent specifically authorized by General Monitors, Inc. in writing. Such information and technical data are proprietary to General Monitors, Inc. and may not be used or disseminated except as provided in the foregoing sentence.		
THIRD ANGLE PROJECTION	DRAWN	WJE	03MAY18
DIMENSIONS INCH[mm]	CHK'D.	L.VLAGEA	02MAY18
	ENGR.	B.MONAHAN	02MAY18

GM General Monitors by MSA LAKE FOREST, CA, USA GALWAY, IRELAND

CUSTOMER _____
 P.O. NO. _____
 GM NO. _____
 LOCATION _____
 TAG NO. _____
 TOTAL NO. OF UNITS _____

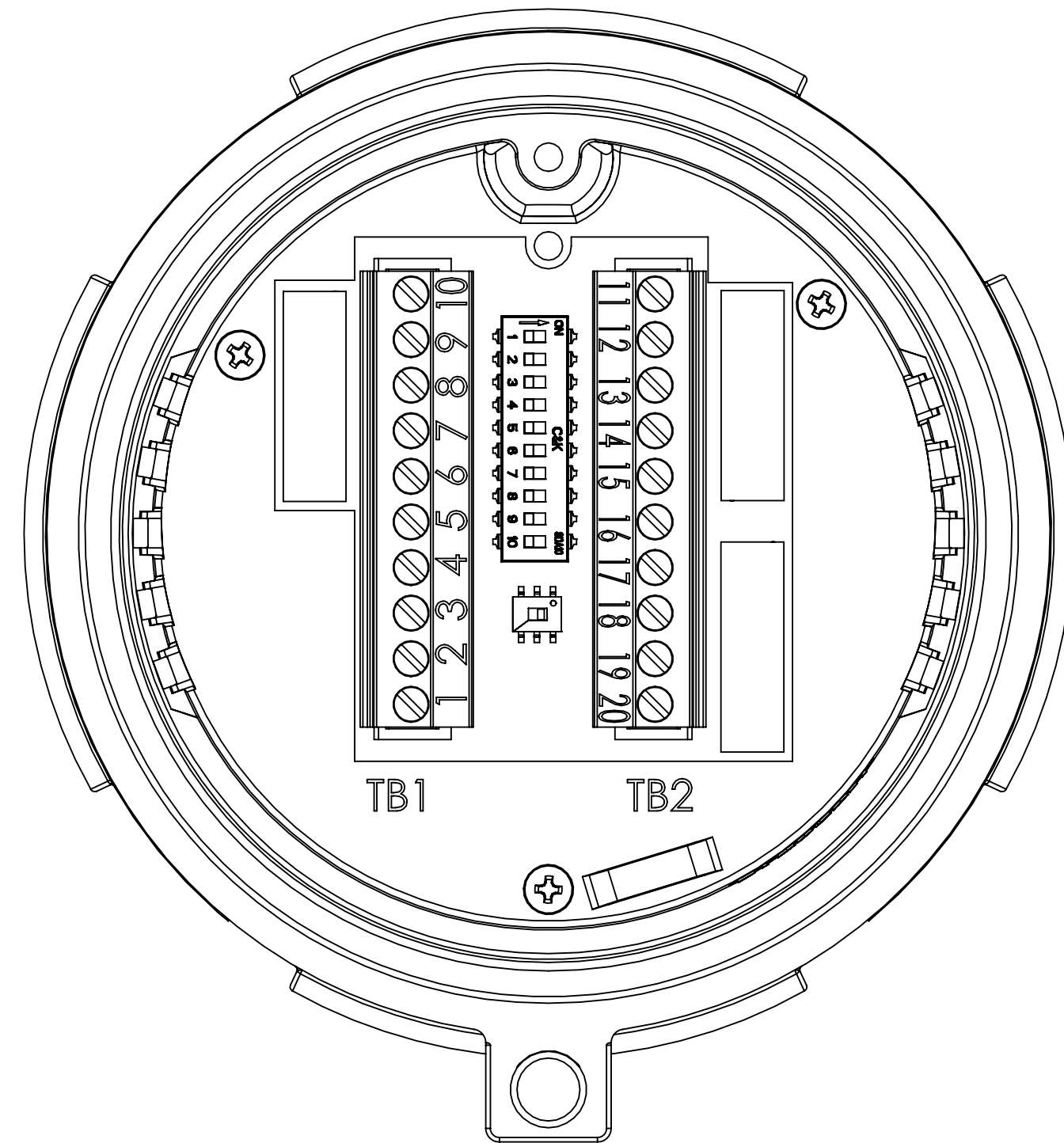
TITLE:
INSTALLATION OUTLINE DRAWING, FL500

DRAWING NO.:	LIFECYCLE STATE:	REV:
712906	Production	2

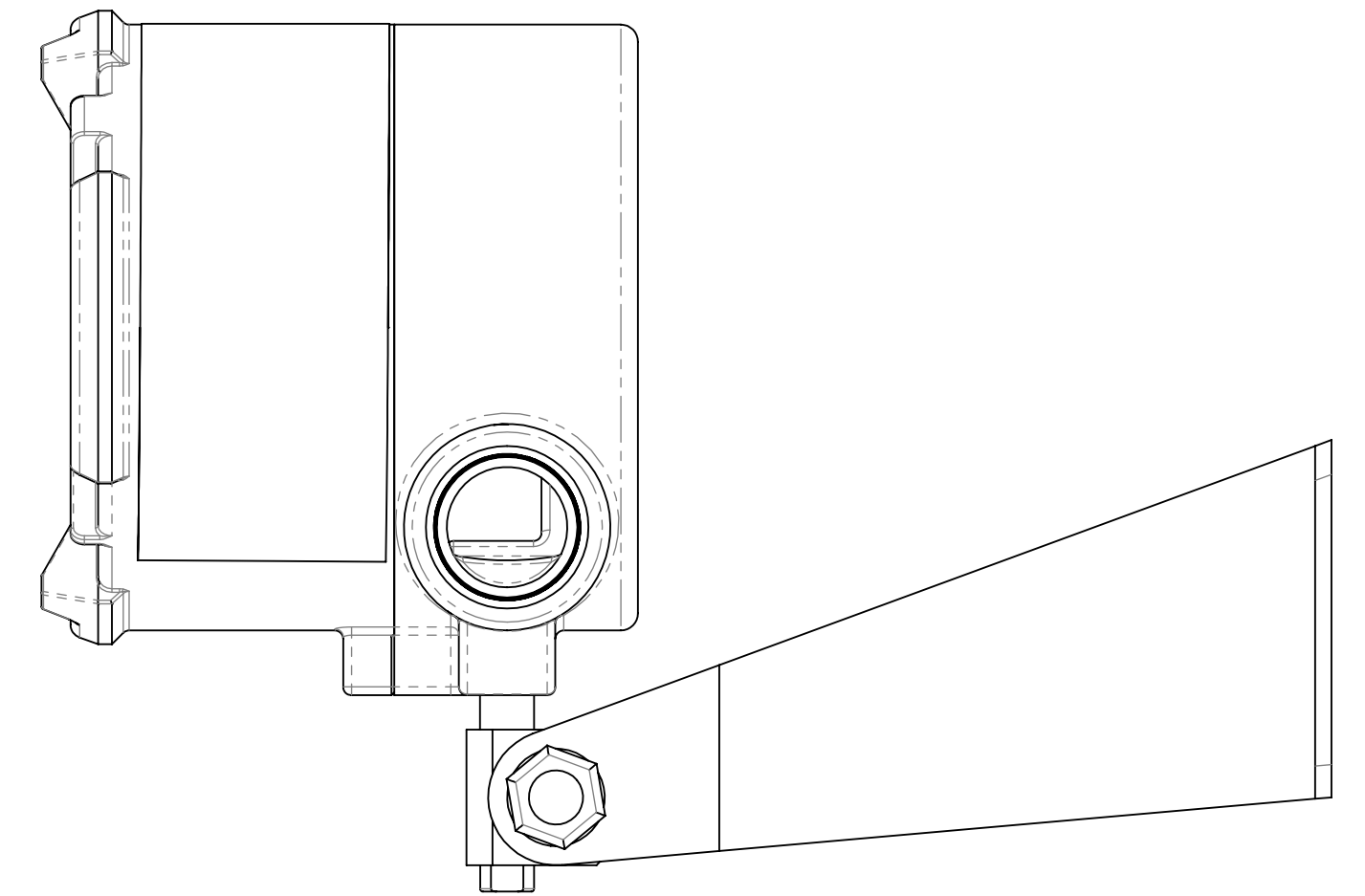
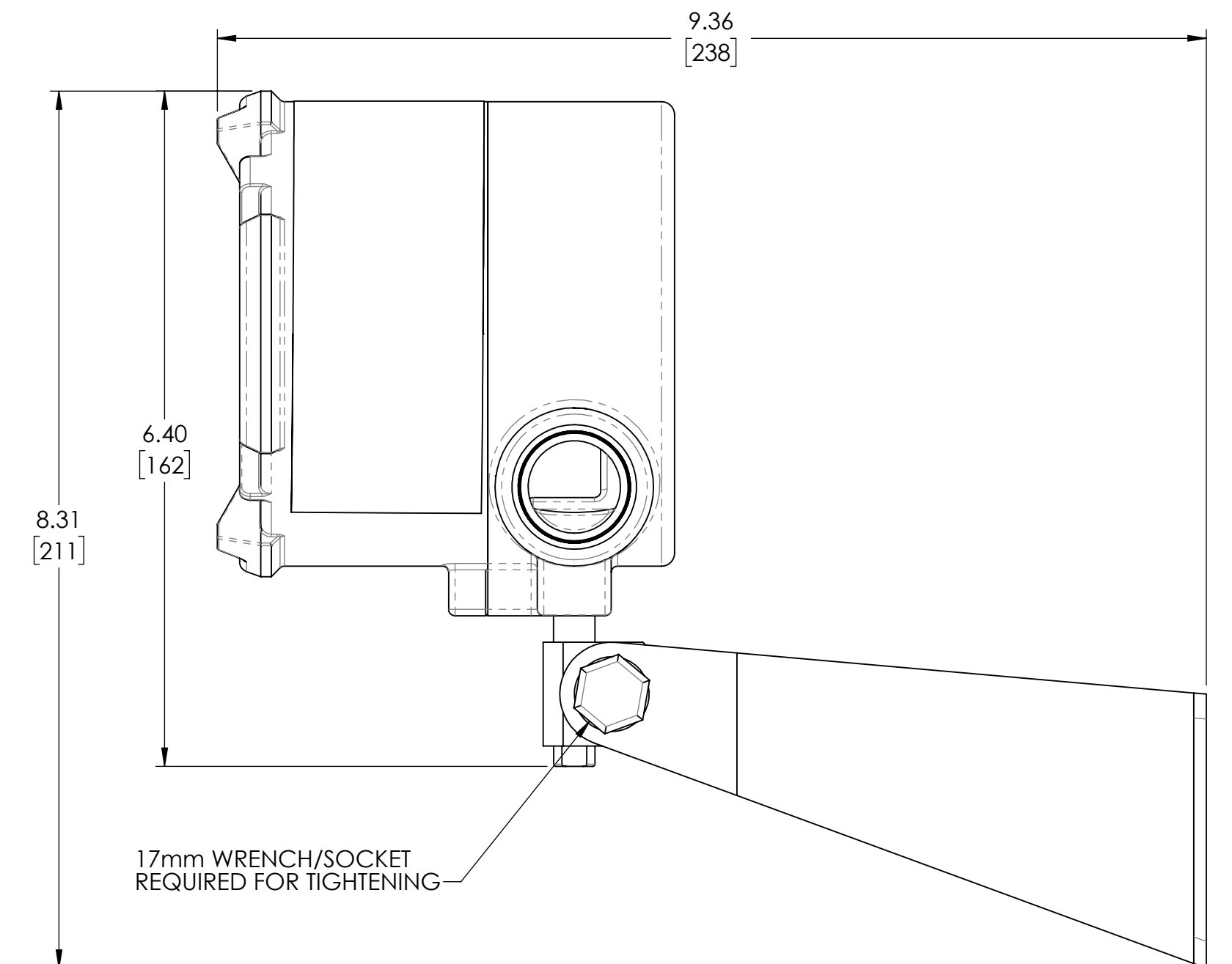
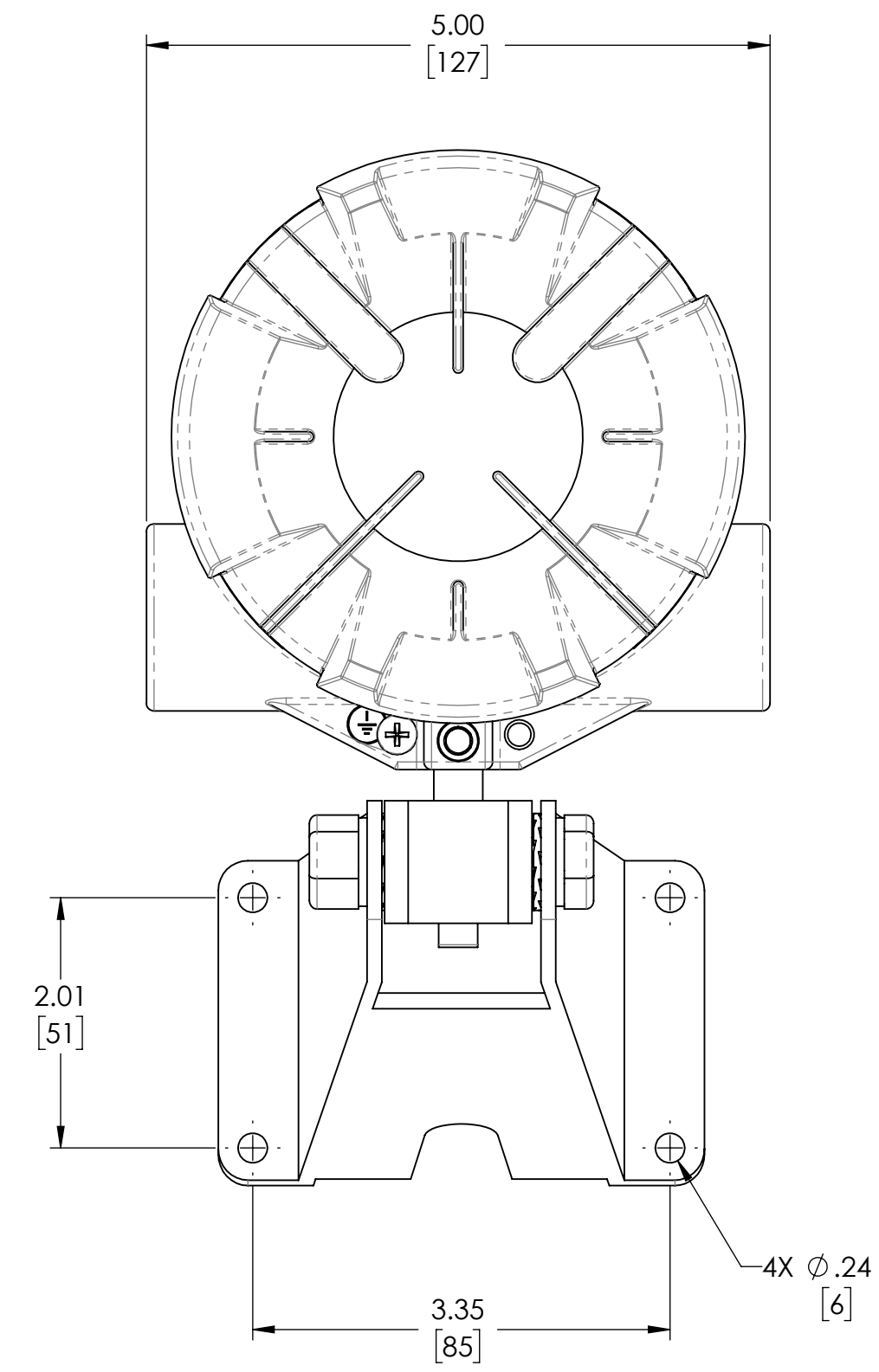
SCALE: NTS MODEL: FL500 SHEET 1 OF 2

NEXT ASSY	USED ON

WIRING			
POSITION	TB1	POSITION	TB2
10	FAULT 2	11	ALARM RESET
9	FAULT C	12	NOT USED
8	FAULT 1	13	NOT USED
7	DATA-	14	ALARM TEST
6	DATA+	15	ALARM HIGH 2
5	NOT USED	16	ALARM HIGH 1
4	0-20 mA	17	ALARM HIGH C
3	+24VDC	18	ALARM LOW C
2	COM (24V-RETURN)	19	ALARM LOW 1
1	CHASSIS	20	ALARM LOW 2



MAXIMUM WIRE LENGTH TO INSTRUMENT FOR A +24 VDC SUPPLY (MAXIMUM 20 OHM LOOP)			
AWG	mm ²	Feet	Meters
14	2.08	6588	2013
16	1.31	4146	1266
18	0.823	2608	796
20	0.519	1642	501
22	0.33	1055	321



GM General Monitors by MSA LAKE FOREST, CA, USA GALWAY, IRELAND

The information and technical data disclosed by this document may be used and disseminated only for the purposes and to the extent specifically authorized by General Monitors, Inc. in writing. Such information and technical data are proprietary to General Monitors, Inc. and may not be used or disseminated except as provided in the foregoing sentence.

DRAWING NO.: 712906	LIFECYCLE STATE: Production	REV: 2
SCALE: NTS	MODEL: FL500	SHEET 2 OF 2