



EVOLUTION® 6000
Thermal Imaging Cameras



*Because every life has a **purpose...***

MSA protects firefighters' lives.

MSA introduced one of the first firefighting thermal imaging cameras over a decade ago. In the years following, we've refined TIC design through innovation and expertise, delivering several successful generations of market-leading TICs. We continue this commitment to the fire service by releasing the **EVOLUTION® 6000 TIC**, a new platform to make TIC use easier, faster, lighter, and more intuitive.

The EVOLUTION 6000 TIC offers many of the same benefits that firefighters have come to expect from MSA, as well as new ones to take user experience to another level. The EVOLUTION 6000 TIC platform comprises three new models to offer the best mix of features, including NFPA compliance, to support the thermal imaging needs of all first responders.

New and enhanced features include best-in-class image quality, light weight, laser pointer and range finder, compass, integrated video and picture capture, and integrated wireless video transmission system. All EVOLUTION 6000 TIC models are built with high resolution 320x240 imaging cores.



NFPA 1801 compliant
third-party certification builds
upon MSA's long experience
with thermal imaging

Nonincendive equipment
(UL Class 1, Div 2)
for additional safety within
combustible environments

Fireground-tough product design
provides waterproof shock resistance

Patent-pending compass
assists in faster operations and
improved situational awareness

Three carabiner attachment points
offer firefighters flexibility
of camera attachment

Patented dual-handle design
for easy handoff and better
ergonomics on the fireground

Field-replaceable germanium lens
saves on repair costs

Laser pointer pinpoints hot spots
to allow fast, specific action

**LED flashlight or patent-pending
laser range finder options** enable
faster, more precise action



Six color palettes for multiple views
of thermal image

2x/4x zoom for a closer look
at areas of interest

Integrated video transmitter
sends video for remote monitoring
and improved decision making

Integrated picture/video capture
saves pictures and video for future
review and training use

Camera configuration application
customizes camera settings to meet
your needs

EVOLUTION® 6000 Thermal Imaging Cameras

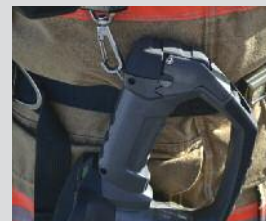
EVOLUTION 6000 Basic TIC

Provides easy to use TIC performance – a simplified fireground tool.

- Economical, durable value to fit your station's budget
- Save on repair costs with rugged, waterproof and shock-resistance product design
- 320X240 high definition image quality provides excellent resolution
- Standard flashlight provides extra visibility for firefighter proximity to enhance safety and situational awareness
- Laser pointer pinpoints hot spots and other areas of interest to allow others to take fast, specific action
- Patented dual-handle design, for easy handoff on the fireground
- Three carabiner attachment points offer flexibility in attaching camera to firefighter



Colourized basic image



Three carabiner attachments



Patented dual-handle design



Field-replaceable germanium lens

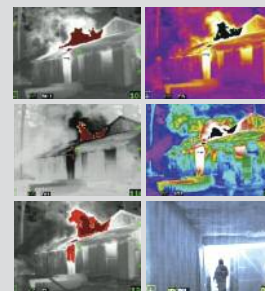


Flashlight/laser pointer

EVOLUTION 6000 Plus TIC

Adds additional tools to aid and improve fireground safety and decision making.

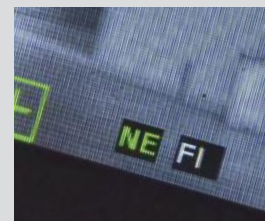
- 2x/4x zoom gets a closer look at areas of interest
- Six user-selectable color palettes provide flexibility to view thermal images
- Compass allows for faster rescues and improved situational awareness by displaying letters or icon for directional information
- Optional integrated video transmitter enables remote monitoring for improved decision making and situational awareness
- Optional integrated range finder offers more usable information as to surroundings to enable faster, more precise action, from 5 to 70 meters (15 to 210 feet) away (replaces flashlight option)



Six color palettes



2x/4x zoom



Compass



Laser range finder

Provides same standard and optional features as EVOLUTION 6000 Plus TIC.

-



Picture capture

Applications

Size up

Ideal for locating the seat of any fire and for pinpointing and isolating hidden fires, as well to locate areas of heat accumulation and possible ventilation points.

Optional real time video broadcast directly from operations scene to incident command control assists firefighters in making strategic decisions and increasing fireground safety.



Search/rescue

Search for victims and downed firefighters, locate missing/ injured persons, search for suspects, or quickly scan areas for heat signatures using available six color palettes.



Operations

Monitor building condition to help avoid collapse, aid in decision-making process of placing firefighters on scene to find fire extensions.



Overhaul

Search for remaining hot spots and areas of building instability. User-selectable colour palettes support code inspections and maintenance.

Model Comparison

	EVOLUTION 6000 Basic TIC	EVOLUTION 6000 Plus TIC	EVOLUTION 6000 Xtreme TIC
HIGH DEFINITION 320X240 THERMAL IMAGING CORE	•	•	•
LASER POINTER	•	•	•
LED FLASHLIGHT *	•	•	•
THREE CARABINER ATTACHMENT POINTS	•	•	•
FIELD-REPLACEABLE GERMANIUM LENS	•	•	•
PATENTED DUAL-HANDLE DESIGN	•	•	•
SIX COLOR PAlettes		•	•
2X/4X ZOOM		•	•
COMPASS		•	•
OPTIONAL INTEGRATED VIDEO TRANSMITTER		•	•
OPTIONAL RANGE FINDER		•	•
INTEGRATED PICTURE CAPTURE			•
INTEGRATED VIDEO CAPTURE			•

* Not available with range finder option

Technical Specifications

CONSTRUCTION	Flame retardant (material passes NFPA direct flame exposure test). IP67 (withstands immersion to 1 meter (3 ft))
APPROXIMATE DIMENSIONS	185 mm x 122 mm x 295 mm (LxWxH) (7.3" x 4.8" x 11.6")
SENSOR	Uncooled VOX microbolometer
ARRAY SIZE	320X240
WEIGHT	1.2 kg (2.65 lbs)
POWER SOURCE	Rechargeable lithium-ion battery
OPERATING TIME	3.5 hours at nominal 22°C (72°F)
FIELD OF VIEW	48° H; 37° V
RANGE FINDER	Maximum range 70 m (210 ft)
INTRINSICALLY SAFE	Nonincendive equipment (UL Class 1, Div 2)

APPROVALS	NFPA 1801 compliant
NET EQUIVALENT TEMPERATURE DIFFERENCE	High Sensitivity 40 mK (0.040°C) (typical), 78 mK (0.078°C) (max) Low Sensitivity 234 mK (0.234°C)
TEMPERATURE MEASUREMENT	± 10°C (18°F) or ± 10 % whichever is greater
IMAGE STORAGE (6000X ONLY)	Number of images stored 1000 minimum Format – JPG
VIDEO STORAGE (6000X ONLY)	Length – 4-hour minimum Format – MPEG 4
ENVIRONMENTAL AMBIENT TEMPERATURE AND OPERATING TIME	80°C (176°F) > 30 minutes 120°C (248°F) > 20 minutes 260°C (500°F) > 6 minutes -30°C (-22°F) > 40 minutes -40°C (-40°F) > 25 minutes

Ordering Information

EVOLUTION 6000 TIC	
10145939	EVOLUTION 6000 Basic TIC, NFPA compliant (includes flashlight, laser pointer, degrees C)
10145955	EVOLUTION 6000 Plus TIC, NFPA compliant (includes laser range finder, meters, degrees C, zoom 2x/4x, colour palettes, compass)
10145963	EVOLUTION 6000 Xtreme TIC, NFPA compliant (includes laser range finder, meters, degrees C, zoom 2x/4x, colour palettes, compass, image capture, video capture)

The EVOLUTION 6000 TIC is configurable to your needs by means of an Assembly To Order (ATO) code. We offer the above mentioned pre-configured TIC's. If you need any other configurations, please contact your local MSA affiliate.

EVOLUTION 6000 Charging KITS	
10147389	EVOLUTION 6000 TIC Station Kit (includes carrying case, 2 rechargeable batteries, desktop / vehicle dual charger, retractable lanyard, carabiner)
10145771	EVOLUTION 6000 TIC Vehicle Kit (Includes 2 rechargeable batteries, vehicle charger, retractable lanyard, carabiner)

ACCESSORIES	
10145859	Multi-use charger (12V) kit
10148136	Vehicle mounted charger system
10147390	Vehicle mounting bracket
10145749	Reflective label ID kit
10120606-SP	Lithium-ion battery
10145748	Tripod adapter
10040005	Carabiner
10127441-SP	Plastic carrying case
10040226	Retractable lanyard
10039515	Shoulder strap
10039516	Wrist strap
10147892	Sun shroud
10148391-SP	Disposable display covers

For video transmission and receiver kits, please contact your local MSA affiliate.

Your direct contact



MSA Indonesia
Jalan Rajawali Selatan Raya,
Blok C5 No. 2,
Komplek Multiguna Kemayoran
No. 1-K
Jakarta Utara 14410
Indonesia
Phone +62 (21) 640 9000
Fax +62 (21) 641 2831
info.id@MSAsafety.com

MSA International
1000 Cranberry Woods Drive
Cranberry Township, PA 16066
USA
Phone +1-724-776-8626
Fax +1-724-741-1559
msa.international@MSAsafety.com

