

MOROCCAN CONCRETE™

COLORBODY™ & GLAZED PORCELAIN FLOOR TILE AND
CERAMIC MOSAIC TILE WITH STEPWISE™ TECHNOLOGY

MARAZZI 

DARE TO BE BOLD™

CONCRETE LOOK



MOROCCAN CONCRETE™

Time worn concrete meets Moroccan style in a wide range of earthy color tones. From Light Moss to Ochre to Terra Cotta, these unique colors blend well with the multiple shapes and patterns offered in this collection. The series is rounded out by Aziza, a Moroccan-inspired 8x8 decorative motif in four colors. Moroccan Concrete features StepWise™ technology, making it an ideal selection for indoor and outdoor spaces.



STEPWISE™

50% MORE
SLIP RESISTANT
THAN ORDINARY TILE†

†When compared to tile meeting ANSI Standards



COVER PHOTO: AZIZA CHARCOAL
ABOVE PHOTO: TERRA COTTA

CONCRETE LOOK

MOROCCAN CONCRETE™

COLORBODY™ & GLAZED PORCELAIN FLOOR TILE AND CERAMIC MOSAIC TILE WITH STEPWISE™ TECHNOLOGY

FINISHES: MATTE

MARAZZI®

DARE TO BE BOLD™

USAGE



MATERIAL



PRICING



SPECIAL FEATURES



CONCRETE LOOK

NOT APPLICABLE FOR ALL PRODUCTS IN THIS SERIES. SEE CHARTS FOR FULL PRODUCT DETAILS.

COLORBODY™ PORCELAIN FLOOR TILE



MC50 Off White



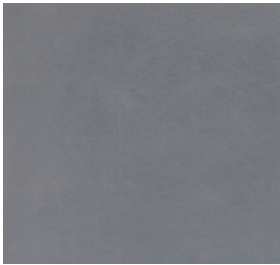
MC51 Taupe



MC52 Gray



MC53 Light Moss



MC54 Blue Gray



MC55 Ochre



MC56 Terra Cotta



MC57 Charcoal

GLAZED PORCELAIN FLOOR TILE - 8 x 8 DECO



MC61 Aziza Gray



MC58 Aziza Blue Gray



MC59 Aziza Terra Cotta



MC60 Aziza Charcoal

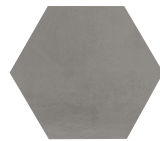
GLAZED PORCELAIN FLOOR TILE - 8" HEXAGON



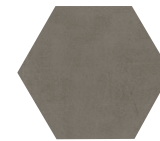
MC50 Off White



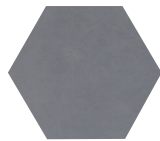
MC51 Taupe



MC52 Gray



MC53 Light Moss



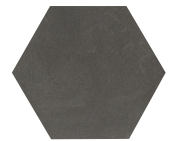
MC54 Blue Gray



MC55 Ochre



MC56 Terra Cotta



MC57 Charcoal

1-1/2" x 1-1/2" CERAMIC HEXAGON MOSAIC | 12 x 10 SHEET



MC50 Off White



MC51 Taupe



MC52 Gray



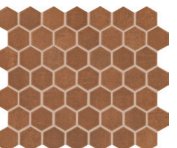
MC53 Light Moss



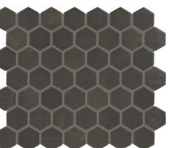
MC54 Blue Gray



MC55 Ochre



MC56 Terra Cotta



MC57 Charcoal



50% MORE
SLIP RESISTANT
THAN ORDINARY TILE*



WATERPROOF



STAINPROOF



DENTPROOF



SCRATCH-RESISTANT



FIRE-RESISTANT



INDOOR/OUTDOOR



SIMPLY CLEAN™

VISIT MARAZZITILE.COM/WHYTILE FOR A COMPLETE LIST OF QUALIFICATIONS AND EXCLUSIONS.

MOROCCAN CONCRETE™

COLORBODY™ & GLAZED PORCELAIN FLOOR TILE AND CERAMIC MOSAIC TILE WITH STEPWISE™ TECHNOLOGY

FINISHES: MATTE

MARAZZI®

DARE TO BE BOLD™

USAGE



MATERIAL



PRICING



SPECIAL FEATURES



CONCRETE LOOK

NOT APPLICABLE FOR ALL PRODUCTS IN THIS SERIES. SEE CHARTS FOR FULL PRODUCT DETAILS.

SIZES

| | | | Thickness | Sq. Ft./ Carton | Pieces/ Carton |
|--|---|--|-----------|-----------------|----------------|
| | 12 x 24 Floor Tile* | 11-5/8" x 23-3/8" (29.56 cm x 59.44 cm) | 5/16" | 17.02 | 9 |
| | 24 x 24 Floor Tile* | 23-3/8" x 23-3/8" (59.44 cm x 59.44 cm) | 5/16" | 15.20 | 4 |
| | 8" Hexagon Floor Tile* | 7-7/8" x 9-1/8" (19.95 cm x 23.04 cm) | 5/16" | 9.37 | 25 |
| | 8 x 8 Deco Tile* | 7-7/8" x 7-7/8" (20.00 cm x 20.00 cm) | 5/16" | 11.00 | 25 |
| | 1-1/2" x 1-1/2" Hexagon Mosaic* (Dot-mounted) | 11-5/8" x 10-1/4" Sheet (29.53 cm x 26.04 cm Sheet) | 1/4" | 9.72 | 12 |

*Colorbody™ Porcelain *Glazed Porcelain *Ceramic

TRIM

| Description | Number | Size | Shape |
|---------------------|----------|--------|-------|
| Floor Bullnose | P43F9 | 3 x 24 | |
| Cove Base | P36C9TB | 6 x 12 | |
| Cove Base Outcorner | PC36C9TB | 6 x 1 | |

Cove base trim is intended to coordinate with floor tile in the standard 90-degree installation position.

APPLICATIONS

| | Target DCOF wet | Suitable |
|--|-----------------|----------|
| Dry & Level – Interior Floor | N/A | ■ |
| Wet & Level – Interior Floor | ≥ 0.42 | ■ |
| Shower Floors - Standard Center Drain (Residential or Light Commercial) | ≥ 0.42 | ■* |
| Shower Floors - Linear Drain | ≥ 0.60 | ■** |
| Exterior Floor Applications (including patios, pool decking & other wet areas with minimal footwear) | ≥ 0.60 | ■ |
| Ramps & Inclines | ≥ 0.65 | ■ |
| Walls/Backsplashes | N/A | ■ |
| Countertops | N/A | ■ |
| Pool Linings | N/A | ■* |

A DCOF value of ≥0.42 is the standard for tiles specified for level interior spaces expected to be walked upon when wet, as stated in ANSI A137.1-A326.3. For more information about DCOF and the DCOF AcuTest™, visit marazziusa.com/DCOF.

APPLICATION NOTES:

Floor tile and 8 x 8 Deco suitable for exterior applications (provided it is noted as suitable in the applications chart above) in freezing and non-freezing climates, when proper installation methods are followed.

Mosaic tile suitable for exterior applications (provided it is noted as suitable in the applications chart above) in freezing and non-freezing climates, when proper installation methods are followed.

* Mosaic tile only.

** 12 x 24 and smaller sizes.

INSTALLATION

| Grout Joint Recommendation | Shade Variation |
|---|------------------|
| Floor Tile (12 x 24 & 24 x 24): 1/8" (3/16" when installing tile with a length 15" or greater in a staggered brick-joint pattern; overlap should not exceed 33%) 8" Hexagon & 8 x 8 Deco: 3/16" Mosaic: 1/8" | Medium Variation |

PERFORMANCE CHARACTERISTICS

| | ASTM# | Floor Result | Floor Hex/Deco Result | Mosaic Result |
|---------------------|-------|--------------|-----------------------|---------------|
| Water Absorption | C373 | < 0.5% | < 0.5% | < 3.0% |
| Breaking Strength | C648 | > 275 lbs | > 275 lbs | > 250 lbs |
| Scratch Hardness | MOHS | 8.0 | 7.0 | 8.0 |
| Chemical Resistance | C650 | Resistant | Resistant | Resistant |

For additional information on test results, visit us at: marazziusa.com/information/TestResults.

DURABILITY

Floor Surface Wear Resistance

| | | | |
|---|-----------------------|---|------------------------------------|
| 1 | Residential Bathrooms | 3 | All Residential / Light Commercial |
| 2 | All Residential Areas | ④ | All Residential / Commercial |

NOTES

Since there are variations in all fired ceramic and natural products, tile and trim supplied for your particular installation may not match samples. Final confirmation should be made from actual tiles and trim prior to installation. Manufactured in accordance with ANSI A137.1 standards.

Not for use on ramps. Water, oil, grease, improper drainage and certain footwear can create slippery conditions. Floor applications expected to be exposed to these conditions require extra caution in product selection.

For additional information refer to "Factors to Consider" at: marazziusa.com/Factors

To achieve optimal results, all tile should be selected from multiple cartons and shading and graphic arrangement planned prior to installation.

Special consideration needs to be given when installing tiles greater than 15 inches. Please refer to marazziusa.com/LargeTiles for more information.

Special care should be taken when grouting with dark pigmented colors. A grout release is recommended to prevent finely powdered pigments from lodging in the pores of the surface. Use of a latex modified thin-set is recommended for installation.

FEATURES

POST-CONSUMER RECYCLED MATERIALS

PRE-CONSUMER RECYCLED MATERIALS

MADE IN THE U.S.A.

REVEAL IMAGING®

CERTIFIED PORCELAIN TILE
100% of this series is made in Italy.



ZEROT®
Healthy Homes | Healthy Planet

All or select items within this series meet the requirements for these qualifications. For more information visit marazziusa.com.