



MARBLE LOOK



SOVRAN™
COLORBODY™ PORCELAIN



 daltile®
IMAGINE WHAT'S POSSIBLE

SOVRAN™

COLORBODY™ PORCELAIN

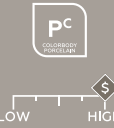
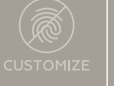
Sovran epitomizes luxury and durability, marrying the opulence of natural marble with the practicality of ColorBody™ Porcelain. Each tile boasts a timeless elegance reminiscent of classic white and black marble. Adorned with intricate veining enhanced with RevealSync3D. Reinvent your space with Sovran's distinguished presence, featuring eight bold Art Deco-inspired patterns that add a touch of grandeur to any setting. The expansive 24 x 48 size with rectified edges creates seamless installations – designed with the discerning connoisseur in mind.



Cover photo features Capri, 24 x 48 on the floor. Above photo features Sovran™ Triangle, 24 x 48 on the floor and ONE Quartz Surfaces® Calacatta Bolt on the countertop.

MARBLE LOOK

USAGE



SPECIAL FEATURES

SEE CHARTS FOR FULL PRODUCT DETAILS.

MARBLE LOOK

SOVRAN™ COLORBODY™ PORCELAIN

SIZES:



FINISHES: SATIN

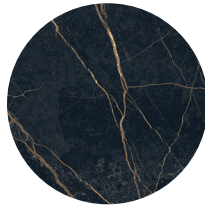
COLOR PALETTE



BIANCA



CAPRI



COLORBODY™ PORCELAIN FLOOR



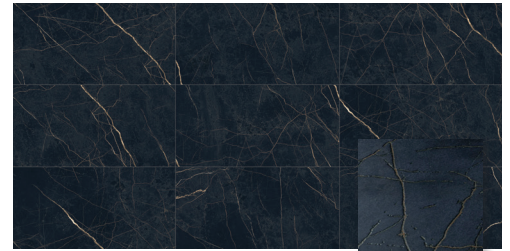
BIANCA SV20 - 9 PIECE SHOWN

CLOSE UP



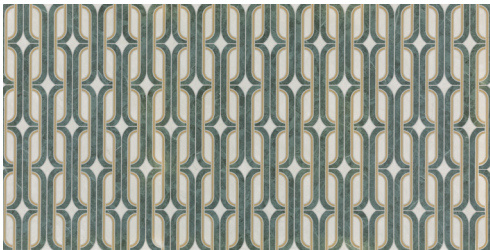
CAPRI SV21 - 9 PIECE SHOWN

CLOSE UP



LAURENT SV22 - 9 PIECE SHOWN

CLOSE UP



WEAVE SV23



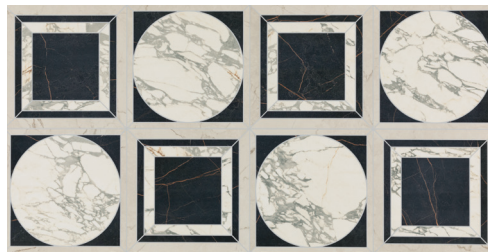
TRIANGLE SV24



KALEIDOSCOPE SV25



PETAL SV26



GEOMETRIC SV27



FRAME SV28



ARROW SV29



LATTICE SV30



WATERPROOF



STAINPROOF



DENTPROOF



FIRE-RESISTANT




CLIMATEPRO™



SIMPLICLEAN™

VISIT THE WHY TILE PAGE AT WWW.DAL TILE.COM FOR A COMPLETE LIST OF QUALIFICATIONS AND EXCLUSIONS.

SIZES

			Thickness	Finish
	24 x 48 Floor Tile	23-7/16" x 47-1/16" (59.60 cm x 119.42 cm)	5/16"	S

S Satin Finish

APPLICATIONS


	Target DCOF wet	Suitable
Dry & Level – Interior Floor	N/A	✓
Wet & Level – Interior Floor	≥ 0.42	✓
Shower Floors – Standard Center Drain	≥ 0.42	
Shower Floors – Linear Drain	≥ 0.42 (Mosaic) ≥ 0.60 (Floor)	
Exterior Floor Applications (including patios, pool decking & other wet areas with minimal footwear)	≥ 0.60	
Ramps & Inclines	≥ 0.65	
Walls/Backsplashes	N/A	✓
Countertops	N/A	✓
Pool Linings	N/A	

A DCOF value of ≥0.42 is the standard for tiles specified for level interior spaces expected to be walked upon when wet, as stated in ANSI A137.1-A326.3. For more information about DCOF and the DCOF AcuTest™, visit daltile.com/DCOF.

APPLICATION NOTES:

Suitable for exterior applications (provided it is noted as suitable in the applications chart above) in freezing and non-freezing climates, when proper installation methods are followed.

INSTALLATION

Grout Joint Recommendation	Shade Variation
1/8" (3/16" when installing tile with a length 15" or greater in a staggered brick-joint pattern; overlap should not exceed 33%.)	 High (V3)

PERFORMANCE CHARACTERISTICS

	ASTM#	Result
Water Absorption	C373	< 0.5%
Breaking Strength	C648	> 275 lbf
Scratch Hardness	C1895	5.0
Chemical Resistance	C650	Resistant

For additional information on test results, visit us at: daltile.com/information/TestResults.

DURABILITY

Floor Surface Wear Resistance

1	Residential Bathrooms (3)	All Residential / Light Commercial
2	All Residential Areas	4 All Residential / Commercial

NOTES

Since there are variations in all fired ceramic and natural products, tile and trim supplied for your particular installation may not match samples. Final confirmation should be made from actual tiles and trim prior to installation. Manufactured in accordance with ANSI A137.1 standards.

To achieve optimal results, all tile should be selected from multiple cartons and shading and graphic arrangement planned prior to installation.

Water, oil, grease, improper drainage and certain footwear can create slippery conditions. Floor applications expected to be exposed to these conditions require extra caution in product selection.

For additional information refer to "Factors to Consider" at: daltile.com/Factors.

Special consideration needs to be given when installing tiles greater than 15 inches. Please refer to daltile.com/LargeTiles for more information.

Special care should be taken when grouting with dark pigmented colors. A grout release is recommended to prevent finely powdered pigments from lodging in the pores of the surface. Use of a white latex modified thin-set is recommended for installation.



All or select items within this series meet the requirements for these qualifications. For more information, visit daltile.com.



7834 C.F. Hawn Freeway,
Dallas, Texas 75217 | 1.800.933.TILE

To view the complete collection of Daltile® products and information, visit our website at daltile.com.



IMAGINE WHAT'S POSSIBLE™

©2025 Daltile (7/25)