

2.0mm | 8 mil & 3.0mm | 20 mil  
**PINES TERRACE™**  
FLEXIBLE GLUE DOWN

**PROSERIES™**  
LUXURY VINYL FLOORING  
dal tile



**SuperGuard™**  
REINFORCED SHIELD


# 2.0mm | 8 mil & 3.0mm | 20 mil PINES TERRACE™ FLEXIBLE GLUE DOWN

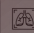
Create a design retreat with the transitional wood look visual in Pines Terrace. Offered in 7-1/4" x 48" planks, with embossed surfaces protected with SuperGuard™ Technology. Pines Terrace is the durable solution your project needs with the timeless style you want. Available in a 2.0 mm thickness and 8 mil wear layer for residential or multifamily unit applications and the commercial grade 3.0 mm thickness and 20 mil wear layer – both offered in five essential colors.

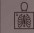
## DESIGN RETREAT

- 7-1/4" x 48" wood look planks
- Five classic colors
- Flexible glue down
- Embossed texture
- 2.0 mm & 3.0 mm thickness options

## Level 1

 Cardiology

 Pulmonology

 Radiology

## SIMPLE SOLUTION

- SuperGuard™ Technology
- 8 mil & 20 mil wear layer for various traffic needs
- 100% Waterproof
- 100% Virgin Vinyl



2.0mm | 8 mil & 3.0mm | 20 mil  
**PINES TERRACE™**  
FLEXIBLE GLUE DOWN

SIZES:



7-1/4 x 48  
Plank

7.25 x 48 WOOD LOOK PLANKS



BIRCH PT71 2 MM / 8 MIL  
PT84 3 MM / 20 MIL



SUGAR PT60 2 MM / 8 MIL  
PT73 3 MM / 20 MIL



GINGER PT65 2 MM / 8 MIL  
PT78 3 MM / 20 MIL

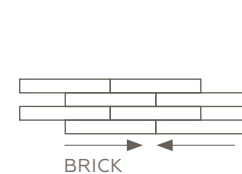


CINNAMON PT66 2 MM / 8 MIL  
PT79 3 MM / 20 MIL



WREATH PT69 2 MM / 8 MIL  
PT82 3 MM / 20 MIL

INSTALLATION OPTIONS



BRICK



HERRINGBONE

2.0mm | 8 mil & 3.0mm | 20 mil  
**PINES TERRACE™**  
 FLEXIBLE GLUE DOWN



NOISE REDUCING



EASY TO CLEAN



100% WATERPROOF



100% VIRGIN VINYL

SPECIFICATIONS	2.0mm   8 mil	3.0mm   20 mil
Product Type:	LVF Dry Back	LVF Dry Back
Installation:	Glue Down	Glue Down
Thickness:	2.0 mm	3.0 mm
Wear Layer:	8 mil (0.2032mm)	20 mil (0.508mm)
Finish:	SuperGuard™ Technology	SuperGuard™ Technology
Size:	7.25" W x 48" L Plank	7.25" W x 48" L Plank
Underlayment:	N/A	N/A
Bevel:	N/A	N/A
Embossing:	Embossed	Embossed
Plank Variation:	5 Unique Planks	5 Unique Planks
Sq. Ft./Carton:	50.82	36.30
Pieces/Carton:	21	15
Weight	1.86lbs per pc/ 39.06 lbs per carton	2.51 lbs per pc/ 37.65 lbs per carton
Warranty:	Limited 20 Year Residential Warranty Limited 3 Year Multifamily Warranty	Limited Lifetime Residential Warranty Limited 15 Multifamily Warranty Limited 15 Year Light Commercial Warranty Limited 15 Year Commercial Warranty
Installation Advisory:	Glue Down LVF must be installed using ProSeries™ Adhesive by Daltile. See <a href="http://daltile.com/LVF">daltile.com/LVF</a> for more recommended installation and adhesive information.	
Stocking Platform:	2 mm   8 mil 3 mm   20 mil	
Special order Platform:	Additional Platforms available on special order. Minimum order quantities apply. Contact your Daltile representative for additional information.	
* Special Order Transitions:	Slim Trim 4-in-1 Transition, Extra Tall Stair Nose, Full Round Stair Tread, Round Stair Nose, Quarter Round, and Slim Cap	

**PERFORMANCE & CHARACTERISTICS**

Construction:	Commercial Grade Luxury Vinyl Flooring; 100% Virgin Vinyl
Classification:	ASTM F1700 - Class III, Type B Embossed
Squareness:	ASTM F2421 - Passes - $\pm 0.010$ " max
Size and Tolerance:	ASTM F2421 - Passes - Plank Length $\geq 48$ in. $\pm 0.080$ in. (2 mm)
Thickness:	ASTM F386 - Passes
Flexibility:	ASTM F137 - Passes - 1" mandrel
Dimensional Stability:	ASTM F2199 - Passes - 0.020 in./lin. Ft (0.51 mm/ 305 mm) maximum
Static Load Limit:	ASTM F970 - Passes
Residual Indentation:	ASTM F1914 - Passes - Average $< 8.0\%$ Max $\leq 10\%$
Resistance To Chemicals:	ASTM F925 - Passes - $\leq 1$ Slight Change
Resistance To Light:	ASTM F1515 - Passes - $\Delta E \leq 8$
Resistance To Heat:	ASTM F1514 - Passes - $\Delta E \leq 8$
Critical Radian Flux:	ASTM E648- Passes -Class 1 ( $> 0.45w/cm^2$ )
Smoke Density:	ASTM E662 Part A - Passes - $< 450$

**NOTES**

See [daltile.com/LVF](http://daltile.com/LVF) for recommended installation and care guidelines.

Six trims and moldings that are designed to coordinate with each of our existing colors within the collection.

**VRDSN:** Round Stair Nose (1-3/4" x 94")

**VQRND:** Quarter Round (3/4" x 94")

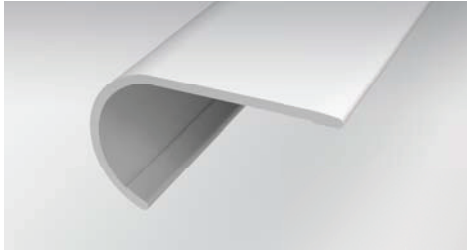
**VSLCAP:** Slim Cap, Low Profile End Cap (1-3/8" x 94")

**EXTSN:** Extra Tall Stair Nose (2" x 94")

**RNDSTRD:** Full Round Stair Tread (12-1/5" x 50")

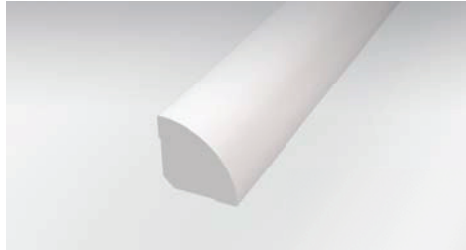
**SLIMIT:** Slim Trim 4-in-1 Transition (2" x 94"), Four unique trims and moldings in one single SKU (T-Molding, Hard Surface Reducer, Carpet Transition, End Cap)

**SPECIAL ORDER ITEMS:**



**Round Stair Nose**

Creates a transition to the edge of the step by overlapping the flooring on the back end. Can also be installed flush on floors with an overall thickness up to 4 mm.\*



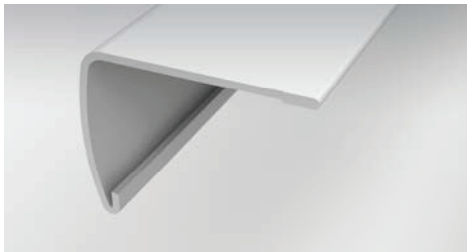
**Quarter Round**

Conceals the expansion space between the wall and the flooring.



**Slim Cap**

Low profile end cap used to transition from flooring to carpet, masonry, sliding doors, and other exterior door jambs.



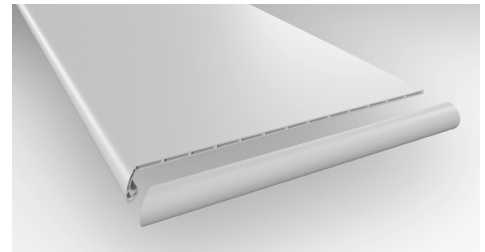
**Extra Tall Stair Nose**

Creates a transition to the edge of the step by overlapping the flooring on the back end. Can also be installed flush on floors with an overall thickness up to 4 mm.\*



**Slim Trim 4-in-1 Transition**

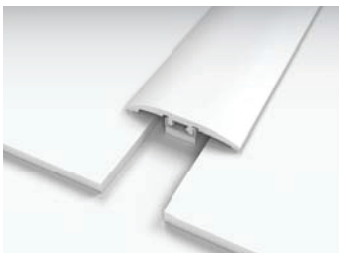
Performance Accessories' exclusive 4-in-1 transition allows you to utilize a single transition for four different applications.



**Full Round Stair Tread**

A vinyl stair tread with pre-attached stair nosing. Can be used on steps with or without nosing.

**EACH OF THE BELOW ARE ACHIEVED VIA THE SLIM TRIM 4-IN-1 TRANSITION (SHOWN ABOVE)**



**T-Molding**

Used to transition between flooring of equal heights and in doorways.



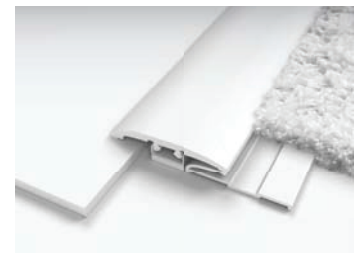
**Hard Surface Reducer**

Connects two floors of different heights.



**End Molding**

Finishing up to a threshold, sliding door, etc.



**Carpet Transition**

Provides a smooth transition between your hard surface floor & carpet. A carpet tap down trim must be used & is sold at your local hardware store.



\*References to flooring thickness refer to the total thickness of all members of the floor installation being laid upon the subfloor. This typically is comprised of the flooring plank, e.g. Vinyl or Laminate, the underlayment, either attached or loose lay and any additional vapor barriers.