

3.0mm | 8 mil

HARPER'S PLACE™

FLEXIBLE GLUE DOWN WITH ACOUSTICAL PAD ATTACHED

PROSERIES™

LUXURY VINYL FLOORING

 daltile



SuperGuard™
REINFORCED SHIELD

3.0mm | 8 mil

HARPER'S PLACE™

FLEXIBLE GLUE DOWN WITH ACOUSTICAL PAD ATTACHED

HARPER'S PLACE™

Designed with the modern metropolitan in mind, Harper's Place™ is fabricated with noise-reducing technology to preserve an atmosphere of tranquility amidst the bustle of city life. This luxury vinyl flooring is available in a wide variety of shades, spanning from cool to warm tones and all offered in a lengthy 7.5" x 48.5" plank. Built with SuperGuard™ to withstand everyday foot traffic, Harper's Place maintains its elegance long-term.

LUXURIOUS DESIGN

- 7.5" x 48.5" wood look planks
- Cool to warm tone color palette
- Flexible Glue Down with acoustical pad attached
- Embossed for realistic look and feel
- Built-in solid IXPE underlayment pad that resists mold and mildew
- 3.0 mm Thickness

PROVEN DURABILITY

- SuperGuard™ Technology
- 8 mil wear layer for heavy foot traffic
- 100% Waterproof
- 100% Virgin Vinyl



Cover photo features Harper's Place™ Tudor 7-1/2 x 48-1/2 plank on the floor and ONE Quartz Surfaces® Monochromatic Look, Woven Wool on the countertop.
Above photo features Harper's Place™ Ranch 7-1/2 x 48-1/2 plank on the floor, Brickwork™ Terrace 4 x 8 tiles on the backsplash, and Natural Stone Granite Bravo Presto on the countertop.

3.0mm | 8 mil

HARPER'S PLACE™

FLEXIBLE GLUE DOWN WITH ACOUSTICAL PAD ATTACHED

SIZES:



7-1/2 x 48-1/2
Plank

7.5 x 48.5 WOOD LOOK PLANKS



COTTAGE
HP40



CRAFTSMAN
HP38*



COLONIAL
HP31*



TOWNHOUSE
HP30*



RANCH
HP32



FRENCH
COUNTRY HP33



RUSTIC
HP34



TUDOR
HP35*



BUNGALOW
HP36



FARMHOUSE
HP37*



VICTORIAN
HP39

* SPECIAL ORDER COLOR

3.0mm | 8 mil

HARPER'S PLACE™

FLEXIBLE GLUE DOWN WITH ACOUSTICAL PAD ATTACHED



NOISE REDUCING



EASY TO CLEAN



100% WATERPROOF



100% VIRGIN VINYL

SPECIFICATIONS

Product Type:	Flexible Glue Down with acoustical pad attached
Installation:	Flexible Glue Down
Thickness:	3.0 mm
Wear Layer:	8 mil (0.2032 mm)
Finish:	SuperGuard™ Technology
Size:	7-1/2" W x 48-1/2" L Plank
Underlayment:	Pad Attached; 1.0 mm IXPE
Bevel:	No Bevel
Embossing:	Embossed
Plank Variation:	5 Unique Planks
Sq. Ft./Carton:	40.64
Pieces/Carton:	16 pcs/carton
Weight	1.89 lbs per pc / 30.24 lbs per carton
Warranty:	Limited 20 Year Residential Warranty Limited 3 Year Multifamily Unit Warranty
Installation Advisory:	Glue Down LVF must be installed using ProSeries by Daltile Adhesive. See daltile.com/LVF for more recommended installation and adhesive information.
* Special Order Transitions:	Extra Tall Stair Nose, Slim Trim 4-in-1 Transition, Full Round Stair Tread, Round Stair Nose, Quarter Round, and Slim Cap
Stocking Platform:	3 mm, 8 mil
Special order Platform:	Additional Platforms available on special order. Minimum quantities apply. Contact your Daltile representative for additional information.

PERFORMANCE & CHARACTERISTICS

Construction:	Commercial Grade Luxury Vinyl Flooring; 100% Virgin Vinyl
Classification:	ASTM F1700-Class III, Type A-Smooth, Type B-Embossed
Squareness:	ASTM F2421 - Passes - ± 0.010 " max
Size and Tolerance:	ASTM F2421 - Passes - Plank Length ≥ 48 in. ± 0.080 in. (2 mm)
Thickness:	ASTM F386 - Passes - ± 0.13 mm
Flexibility:	ASTM F137 - Passes - 1" mandrel
Dimensional Stability:	ASTM F2199 - Passes - 0.020 in./lin ft. (0.51 mm/305 mm) max
Residual Indentation:	ASTM 1914 - Passes - Average < 8.0 %
Resistance To Chemicals:	ASTM F925 - Passes - No more than a slight change
Resistance To Light:	ASTM F1515 - Passes - $\Delta E \leq 8$
Resistance To Heat:	ASTM F1514 - Passes - $\Delta E \leq 8$

NOTES

See daltile.com/LVF for recommended installation and care guidelines.



7834 C.F. Hawn Freeway,
Dallas, Texas 75217 | 1.800.933.TILE

To view the complete collection of
Daltile® products and information,
visit our website at daltile.com/LVF

PROSERIES™
LUXURY VINYL FLOORING



©2024 Dal-Tile, LLC (07/25)

FLEXIBLE GLUE DOWN ACCESSORIES

Six trims and moldings that are designed to coordinate with each of our existing colors within the collection.

VRDSN:	Round Stair Nose (1-3/4" x 94")	EXTSN:	Extra Tall Stair Nose (2" x 94")
VQRND:	Quarter Round (3/4" x 94")	RNDSTRD:	Full Round Stair Tread (12-1/5" x 50")
VSLCAP:	Slim Cap, Low Profile End Cap (1-3/8" x 94")	SLIMIT:	Slim Trim 4-in-1 Transition (2" x 94") , Four unique trims and moldings in one single SKU (T-Molding, Hard Surface Reducer, Carpet Transition, End Cap)

SPECIAL ORDER ITEMS:



Round Stair Nose

Creates a transition to the edge of the step by overlapping the flooring on the back end. Can also be installed flush on floors with an overall thickness up to 4 mm.*



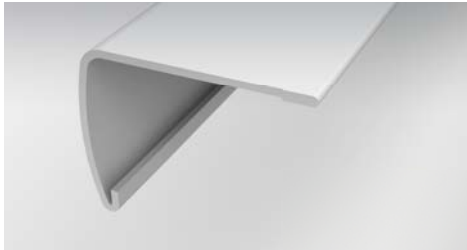
Quarter Round

Conceals the expansion space between the wall and the flooring.



Slim Cap

Low profile end cap used to transition from flooring to carpet, masonry, sliding doors, and other exterior door jambs.



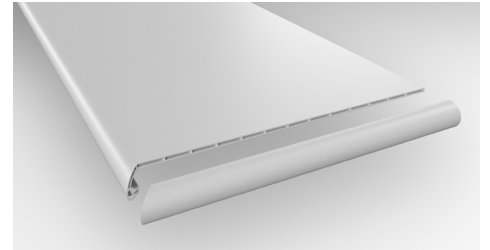
Extra Tall Stair Nose

Creates a transition to the edge of the step by overlapping the flooring on the back end. Can also be installed flush on floors with an overall thickness up to 4 mm.*



Slim Trim 4-in-1 Transition

Performance Accessories' exclusive 4-in-1 transition allows you to utilize a single transition for four different applications.



Full Round Stair Tread

A vinyl stair tread with pre-attached stair nosing. Can be used on steps with or without nosing.

EACH OF THE BELOW ARE ACHIEVED VIA THE SLIM TRIM 4-IN-1 TRANSITION (SHOWN ABOVE)



T-Molding

Used to transition between flooring of equal heights and in doorways.



Hard Surface Reducer

Connects two floors of different heights.



End Molding

Finishing up to a threshold, sliding door, etc.



Carpet Transition

Provides a smooth transition between your hard surface floor & carpet. A carpet tap down trim must be used & is sold at your local hardware store.