

2.0 mm | 12 mil & 5.0 mm | 20 mil

GRANTSHIRE™

FLEXIBLE GLUE DOWN

PROSERIES™

LUXURY VINYL FLOORING

 daltile



SuperGuardX™
REINFORCED SHIELD

2.0 mm | 12 mil & 5.0 mm | 20 mil

GRANTSHIRE™

FLEXIBLE GLUE DOWN

With breathtaking visuals, Grantshire takes inspiration from European marbles while offering the comfort and ease of luxury vinyl flooring. Available in four marble looks and two versatile rectangular sizes - the classic 12 x 24 or the larger 18 x 36. Grantshire offers premium features including a 2.0 mm thickness with 12 mil wear layer, perfect for residential and multifamily homes & a 5.0 mm thickness with 20 mil wear layer for commercial grade projects. Both offered with SuperGuardX™ Technology for lasting durability. Select beauty and function with Grantshire.

TIMELESS LUXURY

- Four Marble Visuals
- Flexible Glue Down
- 12" x 24" & 18" x 36" sizes
- 2.0 mm Thickness with a 12 mil Wear Layer
- 5.0 mm Thickness with a 20 mil Wear Layer
- Micro Beveled

PREMIUM FEATURES

- SuperGuardX™ Technology
- 100% Waterproof
- 100% Virgin Vinyl



Cover photo features Grantshire™ Tuscan Taupe, 18 x 36 on the floor.
Above photo features Grantshire™ Catania Calacatta, 12 x 24 on the floor.

2.0 mm | 12 mil & 5.0 mm | 20 mil

GRANTSHIRE™

FLEXIBLE GLUE DOWN

SIZES:



18 x 36
Floor Tile



12 x 24
Floor Tile

12 x 24 & 18 x 36 MARBLE LOOKS - NINE PIECES SHOWN



CATANIA CALACATTA GR41



SOLARA WHITE GR42



TUSCAN TAUPE GR43



GENOA GRIGIO GR44

2.0 mm | 12 mil & 5.0 mm | 20 mil

GRANTSHIRE™

FLEXIBLE GLUE DOWN



NOISE REDUCING



EASY TO CLEAN



100% WATERPROOF



100% VIRGIN VINYL

SPECIFICATIONS

2.0 mm | 12 mil

Product Type:	LVF Dry Back
Installation:	Glue Down
Thickness:	2.0 mm
Wear Layer:	12 mil (0.3048 mm)
Finish:	SuperGuard X™ Technology
Size:	12" W x 24" L & 18" W x 36" L
Underlayment:	N/A
Bevel:	Micro Bevel
Embossing:	Embossed
Variation:	12" x 24" - 90 sf repeat - 36 Unique Pieces 18" x 36" - 81 sf repeat - 12 Unique Pieces
Sq. Ft./Carton:	67.47 / 59.77
Pieces/Carton:	15 & 30
Weight:	3.57 lbs per pc & 1.59 lbs per pc 53.5 lbs per carton & 47.55 lbs per carton
Warranty:	12 mil: Limited 25 Year Residential Warranty Limited 10 Year Multifamily Warranty Limited 7 Year Light Commercial Warranty

5.0 mm | 20 mil

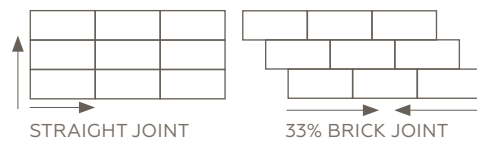
Product Type:	LVF Dry Back
Installation:	Glue Down
Thickness:	5.0 mm
Wear Layer:	20 mil (0.508mm)
Finish:	SuperGuard X™ Technology
Size:	12" W x 24" L & 18" W x 36" L
Underlayment:	N/A
Bevel:	Micro Bevel
Embossing:	Embossed
Variation:	12" x 24" - 90 sf repeat - 36 Unique Pieces 18" x 36" - 81 sf repeat - 12 Unique Pieces
Sq. Ft./Carton:	26.99 / 23.99
Pieces/Carton:	6 & 12
Weight:	8.85 lbs per pc & 3.93 lbs per pc 53.1 lbs per carton & 47.2 lbs per carton
Warranty:	20 mil: Limited Lifetime Residential Warranty Limited 15 Multifamily Warranty Limited 15 Year Light Commercial Warranty Limited 15 Year Commercial Warranty

Installation Advisory:	Glue Down LVF must be installed using ProSeries™ Adhesive by Daltile. See daltile.com/LVF for more information.
Stocking Platform:	2.0 mm 12 mil, 5.0 mm 20 mil
Special Order Platform:	Additional platforms available on special order. Minimum order quantities apply. Contact your Daltile representative for additional information.
Transitions:	Slim Trim 4-in-1 Transition, Extra Tall Stair Nose, Full Round Stair Tread, Round Stair Nose, Quarter Round, and Slim Cap.

PERFORMANCE & CHARACTERISTICS

Construction:	Commercial Grade Luxury Vinyl Flooring; 100% Virgin Vinyl
Classification:	ASTM F1700 - Class III, Type B Embossed
Squareness:	ASTM F2421 - Passes - ± 0.010 " max
Size and Tolerance:	ASTM F2421 - Passes - Plank Length ≥ 0.060 in.
Thickness:	ASTM 386/387 - Passes - ± 0.005 inches (2 mm) / ± 0.008 inches (5 mm) from specified thickness (0.079 in.)
Flexibility:	ASTM F137 - Passes - 1" mandrel, no crack or break
Dimensional Stability:	ASTM F2199 - Passes - Residential & Commercial - Res 0.25% / lin ft. (0.080 in) avg max. Comm 0.20% / lin ft. (0.080 in) avg max
Static Load Limit:	ASTM F970 - Passes - Average ≤ 0.005 inches
Residual Indentation:	ASTM F1914 - Passes - Average $< 8.0\%$ Max $\leq 10\%$
Resistance To Chemicals:	ASTM F925 - Passes - No more than a slight change
Resistance To Light:	ASTM F1515 - Passes - $\Delta E < 8.0$
Resistance To Heat:	ASTM F1514 - Passes - Average $\Delta E < 8.0$
Critical Radiant Flux:	ASTM E648 - Passes - Class 1 ($> 0.45w/cm2$)
Smoke Density:	ASTM E662 - Part A - Passes - < 450

INSTALLATION OPTIONS



NOTES

See daltile.com/LVF for recommended installation and care guidelines.

Please note that shade variations may occur in the same colors of Grantshire™ between the different product platforms: including rigid click and flexible glue down, as well as between the different wear layers: 12 mil and 20 mil. These variations are a natural result of the manufacturing process and do not affect the quality or performance of the product. Color selections need to be made with samples of the exact platform and wear layer.



7834 C.F. Hawn Freeway,
Dallas, Texas 75217 | 1.800.933.TILE

To view the complete collection of
Daltile® products and information,
visit our website at daltile.com/LVF

PROSERIES™
LUXURY VINYL FLOORING

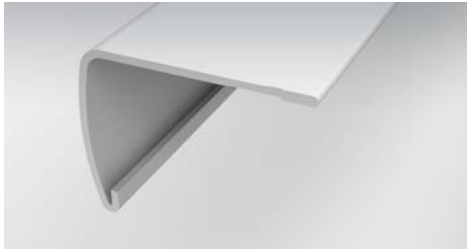


©2024 Dal-Tile, LLC (12/24)

Six trims and moldings that are designed to coordinate with each of our existing colors within the collection.

- | | |
|---|--|
| VRDSN: Round Stair Nose (1-3/4" x 94") | EXTSN: Extra Tall Stair Nose (2" x 94") |
| VQRND: Quarter Round (3/4" x 94") | RNDSTRD: Full Round Stair Tread (12-1/5" x 50") |
| VSLCAP: Slim Cap, Low Profile End Cap (1-3/8" x 94") | SLIMT: Slim Trim 4-in-1 Transition (2" x 94"), Four unique trims and moldings in one single SKU (T-Molding, Hard Surface Reducer, Carpet Transition, End Cap) |

STOCKING ITEMS



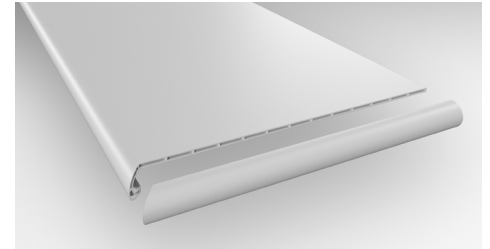
Extra Tall Stair Nose

Creates a transition to the edge of the step by overlapping the flooring on the back end. Can also be installed flush on floors with an overall thickness up to 4 mm.*



Slim Trim 4-in-1 Transition

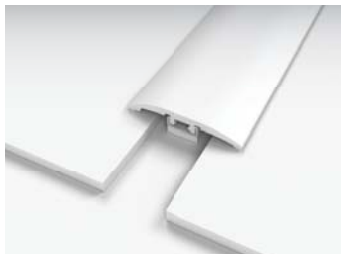
Performance Accessories' exclusive 4-in-1 transition allows you to utilize a single transition for four different applications.



Full Round Stair Tread

A vinyl stair tread with pre-attached stair nosing. Can be used on steps with or without nosing.

EACH OF THE BELOW ARE ACHIEVED VIA THE SLIM TRIM 4-IN-1 TRANSITION (SHOWN ABOVE)



T-Molding

Used to transition between flooring of equal heights and in doorways.



Hard Surface Reducer

Connects two floors of different heights.



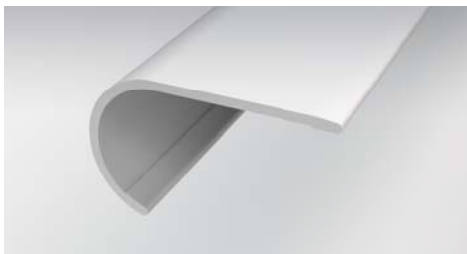
End Molding

Finishing up to a threshold, sliding door, etc.



Carpet Transition

Provides a smooth transition between your hard surface floor & carpet. A carpet tap down trim must be used & is sold at your local hardware store.



Round Stair Nose

Creates a transition to the edge of the step by overlapping the flooring on the back end. Can also be installed flush on floors with an overall thickness up to 4 mm.*



Quarter Round

Conceals the expansion space between the wall and the flooring.



Slim Cap

Low profile end cap used to transition from flooring to carpet, masonry, sliding doors, and other exterior door jambs.



*References to flooring thickness refer to the total thickness of all members of the floor installation being laid upon the subfloor. This typically is comprised of the flooring plank, e.g. Vinyl or Laminated, the underlayment, either attached or loose lay and any additional vapor barriers.

