

2.5 mm | 20 mil  
**ELIXEN™**  
FLEXIBLE GLUE DOWN

**PROSERIES™**  
LUXURY VINYL FLOORING  
daltille



  
**SuperGuardX™**  
REINFORCED SHIELD

  
**MADE IN  
THE U.S.A.**

SIZES:



## 7 x 47 WOOD LOOK PLANKS



SONOMA OAK EX30



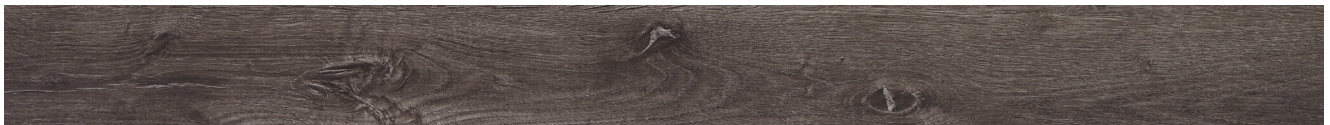
WHITE OAK EX31



VINTAGE PINE EX32



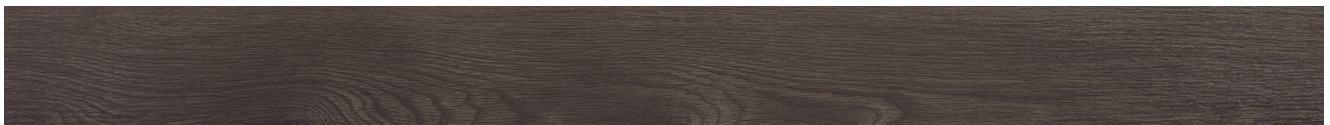
ASHWOOD EX33



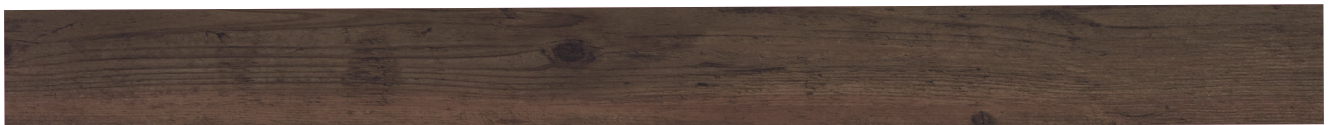
DRIFTWOOD EX34



EXOTIC TEAK EX35



BLACK WALNUT EX36



RUSTIC JAVA EX37



ROSEWOOD EX38

2.5 mm | 20 mil  
**ELIXEN™**  
FLEXIBLE GLUE DOWN



NOISE REDUCING



EASY TO CLEAN



100% WATERPROOF



100% VIRGIN VINYL

## SPECIFICATIONS

Product Type:	LVF Dry Back
Installation:	Glue Down
Thickness:	2.5 mm
Wear Layer:	20 mil (0.508 mm)
Finish:	SuperGuardX™ Technology
Size:	7" W x 47" L Plank
Underlayment:	N/A
Bevel:	No Bevel
Embossing:	Embossed
Plank Variation:	6 Unique Planks
Sq. Ft./Carton:	34.88
Pieces/Carton:	15
Weight:	1.94 lbs per piece   30.2 lbs per carton
Warranty:	Limited Lifetime Residential Warranty Limited 15 Year Multifamily Warranty Limited 15 Year Light Commercial Warranty Limited 15 Year Commercial Warranty
Installation & Adhesive:	Glue down and install using ProSeries by Daltile Adhesive; see <a href="https://daltile.com/LVF">daltile.com/LVF</a> for more recommended installation and adhesive information

\* Special Order Transitions: Slim Trim 4-in-1 Transition, Extra Tall Stair Nose, Full Round Stair Tread, Round Stair Nose, Quarter Round, and Slim Cap

## PERFORMANCE & CHARACTERISTICS

Construction:	Commercial Grade Luxury Vinyl Flooring; 100% Virgin
Classification:	ASTM F1700 - Class III, Type A - Smooth, Type B - Embossed
Squareness:	ASTM F2421 - Passes - $\pm 0.010$ " max
Size and Tolerance:	ASTM F2421 - Passes - $\pm 0.016$ in. / linear foot
Thickness:	ASTM F386 - Passes - as specified $\pm 0.005$ in
Flexibility:	ASTM F137 - Passes - 1" mandrel
Dimensional Stability:	ASTM F2199 - Passes - 0.020 in. / linear foot max
Static Load Limit:	ASTM F970 - Passes, modified at 250 psi
Residual Indentation:	ASTM F1914 - Passes - Average less than 8% max. single reading 10%
Resistance To Chemicals:	ASTM F925 - Passes - No more than a slight change
Resistance To Light:	ASTM F1515 - Passes - $\Delta E \leq 8$
Resistance To Heat:	ASTM F1514 - Passes - $\Delta E \leq 8$
Critical Radiant Flux:	ASTM E648 - Passes - Class 1 ( $> 0.45$ W/cm <sup>2</sup> )
Smoke Density:	ASTM E662 - Passes - $< 450$



Cover Photo features Elixen™ Sonoma Oak 7 x 47 on the floor.

7834 C.F. Hawn Freeway,  
Dallas, Texas 75217 | 1.800.933.TILE

To view the complete collection of  
Daltile® products and information,  
visit our website at [daltile.com/LVF](https://daltile.com/LVF)



©2024 Dal-Tile, LLC (10/24)

Six trims and moldings that are designed to coordinate with each of our existing colors within the collection.

- |   |  |
|---|--|
| <b>VRDSN:</b> Round Stair Nose (1-3/4" x 94")               | <b>EXTSN:</b> Extra Tall Stair Nose (2" x 94")   |
| <b>VQRND:</b> Quarter Round (3/4" x 94")                    | <b>RNDSTRD:</b> Full Round Stair Tread (12-1/5" x 50")   |
| <b>VSLCAP:</b> Slim Cap, Low Profile End Cap (1-3/8" x 94") | <b>SLIMIT:</b> Slim Trim 4-in-1 Transition (2" x 94") , Four unique trims and moldings in one single SKU (T-Molding, Hard Surface Reducer, Carpet Transition, End Cap) |

**SPECIAL ORDER ITEMS:**



**Round Stair Nose**

Creates a transition to the edge of the step by overlapping the flooring on the back end. Can also be installed flush on floors with an overall thickness up to 4 mm.\*



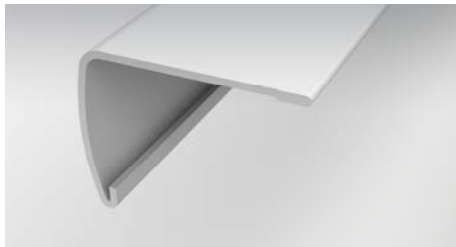
**Quarter Round**

Conceals the expansion space between the wall and the flooring.



**Slim Cap**

Low profile end cap used to transition from flooring to carpet, masonry, sliding doors, and other exterior door jambs.



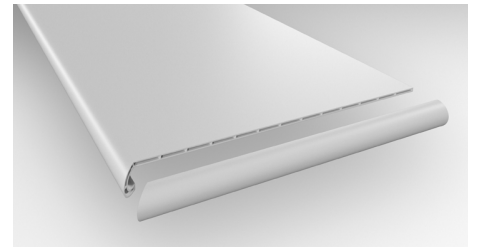
**Extra Tall Stair Nose**

Creates a transition to the edge of the step by overlapping the flooring on the back end. Can also be installed flush on floors with an overall thickness up to 4 mm.\*



**Slim Trim 4-in-1 Transition**

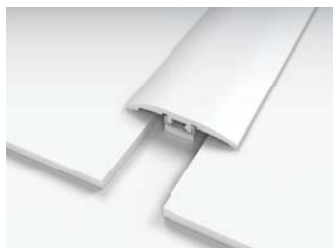
Performance Accessories' exclusive 4-in-1 transition allows you to utilize a single transition for four different applications.



**Full Round Stair Tread**

A vinyl stair tread with pre-attached stair nosing. Can be used on steps with or without nosing.

**EACH OF THE BELOW ARE ACHIEVED VIA THE SLIM TRIM 4-IN-1 TRANSITION (SHOWN ABOVE)**



**T-Molding**

Used to transition between flooring of equal heights and in doorways.



**Hard Surface Reducer**

Connects two floors of different heights.



**End Molding**

Finishing up to a threshold, sliding door, etc.



**Carpet Transition**

Provides a smooth transition between your hard surface floor & carpet. A carpet tap down trim must be used & is sold at your local hardware store.



\*References to flooring thickness refer to the total thickness of all members of the floor installation being laid upon the subfloor. This typically is comprised of the flooring plank, e.g. Vinyl or Laminate, the underlayment, either attached or loose lay and any additional vapor barriers.