



WALL

# REVALIA™ REMIX

GLAZED CERAMIC WALL AND MOSAIC TILE





# REVALIA™ REMIX

GLAZED CERAMIC WALL AND MOSAIC TILE

Play with the whimsical shapes and expressive colors of Revalia Remix. This ceramic mosaic and wall tile collection celebrates geometry and color with a lively, artistic spirit. Choose vibrant hues to make a bold statement or soft neutrals for a more refined touch. Revalia Remix brings structural dimension and visual charm to any space; from bathrooms and kitchens to bar fronts and hotel lobbies.

## WALL

## USAGE



FLOOR



WALL



COUNTERTOP



SHOWER FLOOR



EXTERIOR FLOOR



STEPWISE™



TRU-EDGE™



REVEAL SYNC3D™



MADE IN THE U.S.A.



LARGE FORMAT



MOSAIC/DECO



ENCAUSTIC



TERRAZZO



PAVER



CUSTOMIZE



CERAMIC



LOW HIGH

## SPECIAL FEATURES

SEE CHARTS FOR FULL PRODUCT DETAILS



Cover photo features White and Gray, 6 x 6 kaleidoscope mosaic on the wall.  
Above photo features Charming Peach 3" Fan Mosaic on the wall.

## SIZES:



2 x 8  
Ripple  
Wall Tile



2 x 6  
Bevel  
Mosaic



1 x 4  
Picket  
Mosaic



6 x 6  
Kaleidoscope  
Mosaic



3 x 4  
Structural  
Mosaic



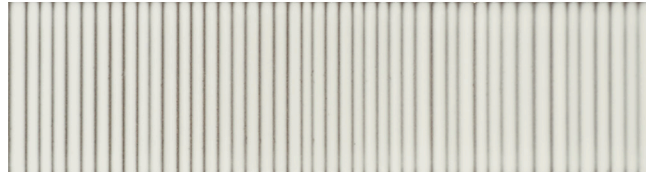
3" Fan  
Mosaic

FINISHES: MATTE | GLOSSY

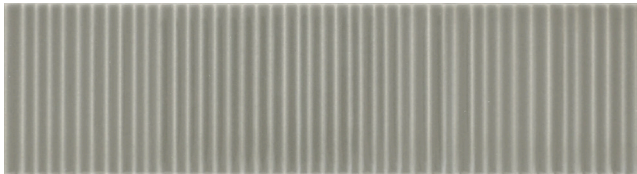
## 2 x 8 RIPPLE WALL TILE



WHITE RV05 – MATTE



CREAM RV06 – GLOSSY



GRAY RV07 – GLOSSY

## 2 x 6 BEVEL CRACKLE MOSAIC



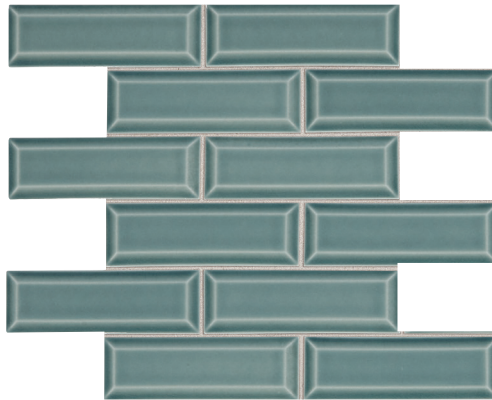
CENTENNIAL WHITE RV08 – GLOSSY



JUBILEE BEIGE RV10 – GLOSSY



FESTIVE GRAY RV09 – GLOSSY



CELEBRATION TEAL RV11 – GLOSSY



STAINPROOF



DENTPROOF



SCRATCH-RESISTANT<sup>\*</sup>  
\*Applicable to products with Matte and Textured Finishes



FIRE-RESISTANT<sup>\*</sup>  
\*Not Applicable to Mesh-Mounted Mosaics



SIMPLICLEAN™

VISIT THE WHY TILE PAGE AT [WWW.DAL TILE.COM](http://WWW.DAL TILE.COM) FOR A COMPLETE LIST OF QUALIFICATIONS AND EXCLUSIONS.

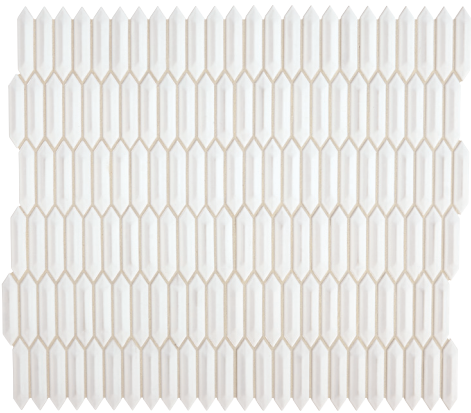


# REVALIA™ REMIX

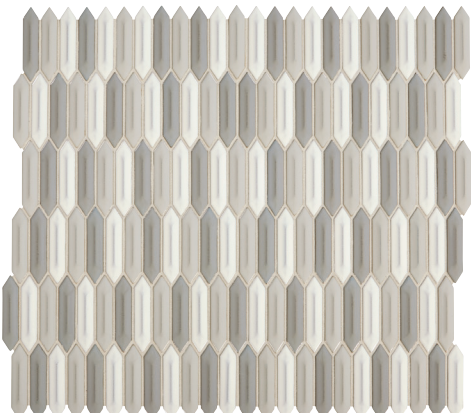
GLAZED CERAMIC WALL AND MOSAIC TILE

WALL

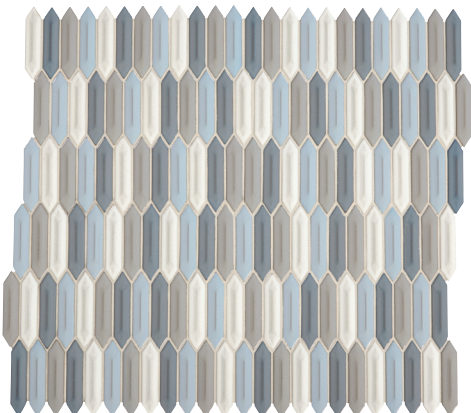
## 1 x 4 PICKET MOSAIC



CALMING WHITE RV13 – GLOSSY

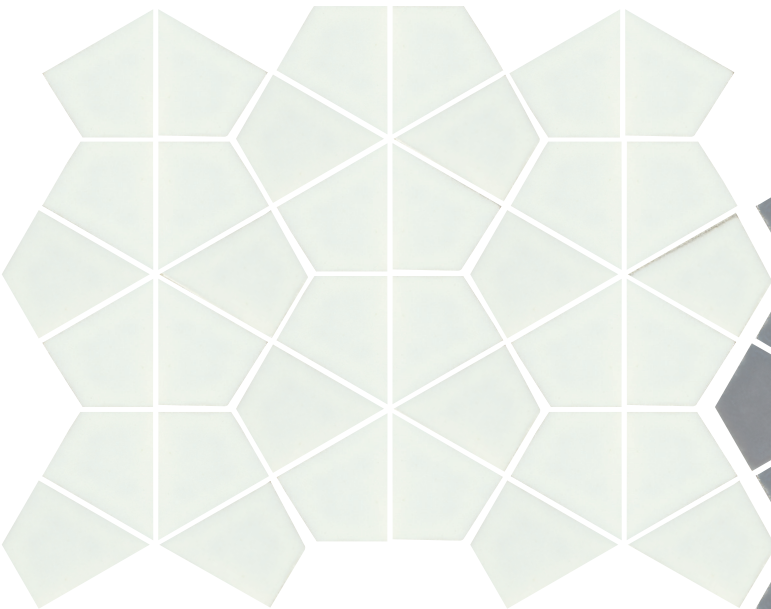


PEACEFUL BLEND RV14 – GLOSSY

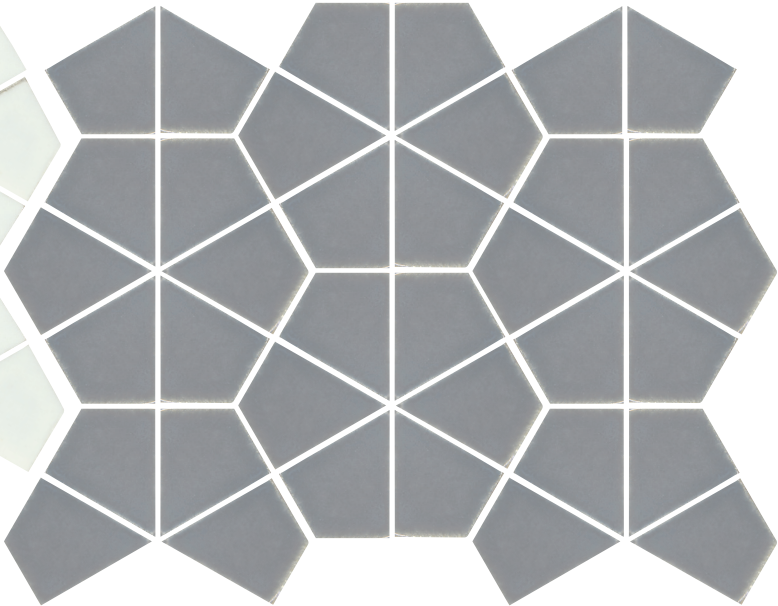


HOT SPRING BLEND RV15 – GLOSSY

## 6 x 6 KALEIDOSCOPE MOSAIC



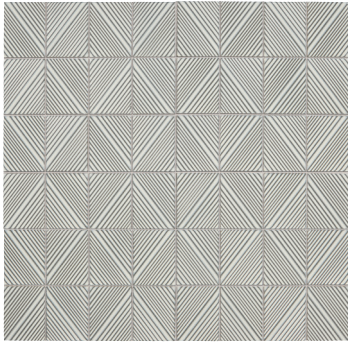
WHITE RV16 – GLOSSY



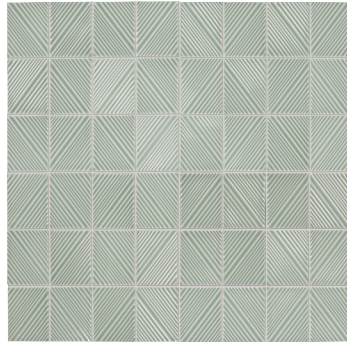
GRAY RV17 – GLOSSY



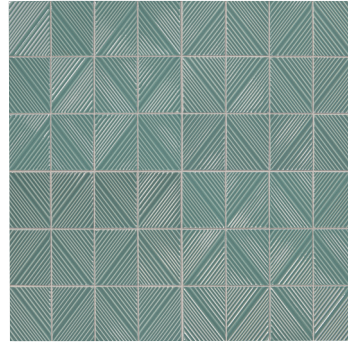
3 x 4 STRUCTURAL MOSAIC



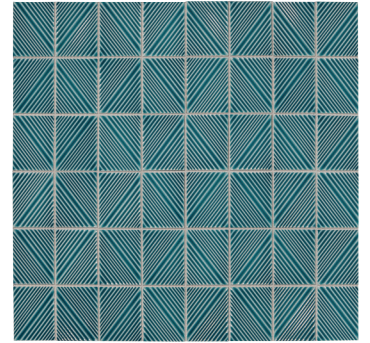
WHITE RV18 – MATTE



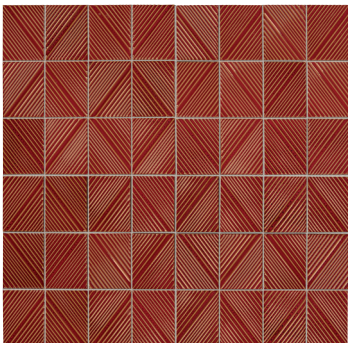
MOSS RV19 – GLOSSY



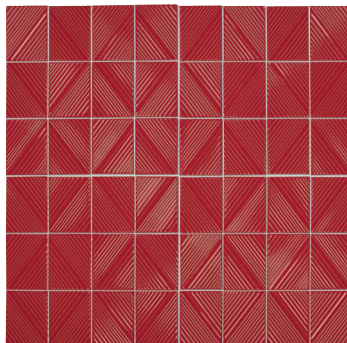
SAGE GREEN RV20 – GLOSSY



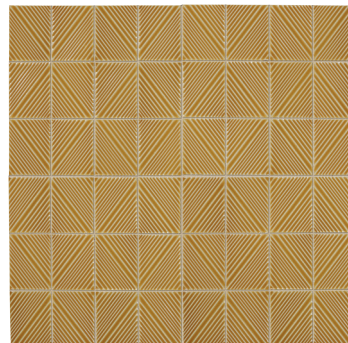
BRILLIANT BLUE RV21 – GLOSSY



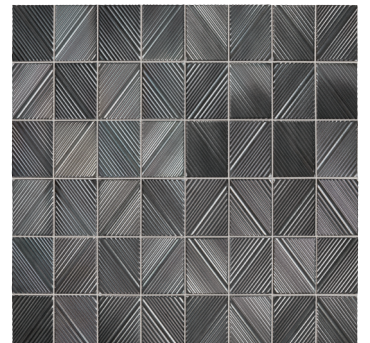
SPICE RV22 – GLOSSY



RED RV23 – GLOSSY

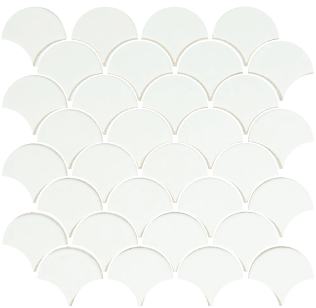


MUSTARD RV24 – GLOSSY

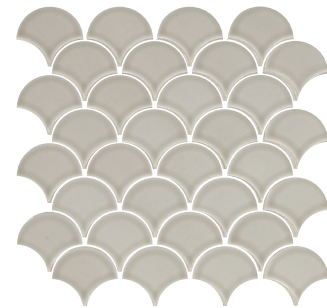


METALLIC GRAY RV25 – GLOSSY

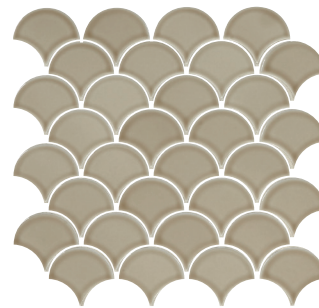
3" FAN MOSAIC



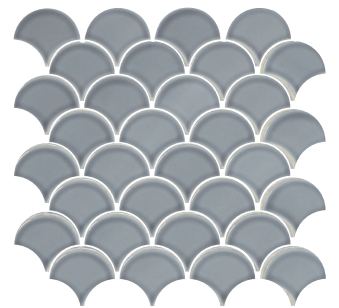
FELICITY WHITE RV26 – GLOSSY



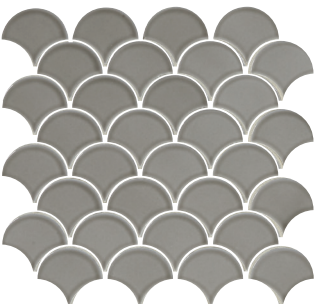
GRACEFUL GREIGE RV27 – GLOSSY



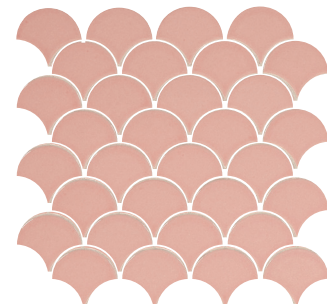
DELIGHTFUL TAN RV28 – GLOSSY



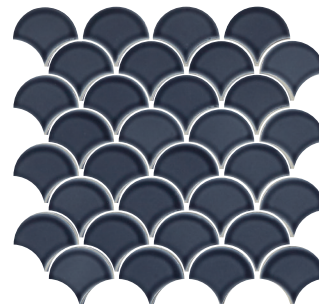
EXQUISITE SKY RV29 – GLOSSY



SUBLIME GRAY RV30 – GLOSSY



CHARMING PEACH RV31 – GLOSSY



RADIANT BLUE RV33 – GLOSSY

SIZES

			Thickness	Finish
	2 x 8 Ripple Wall Tile	2-1/8" x 8-9/16" (5.45 cm x 21.82 cm)	5/16"	<div><div>M</div><div>G</div></div>
	2 x 6 Bevel Mosaic	15" x 12-1/2" Sheet (38.10 cm x 31.75cm Sheet) Mesh-mounted	3/8"	<div><div>G</div></div>
	1 x 4 Picket Mosaic	12-1/2" x 11-1/2" Sheet (31.75 cm x 29.21 cm Sheet) Mesh-mounted	3/8"	<div><div>G</div></div>
	6 x 6 Kaleidoscope Mosaic	12" x 15" Sheet (30.48 cm x 38.10 cm Sheet) Mesh-mounted	1/4"	<div><div>G</div></div>
	3 x 4 Structural Mosaic	15-5/8" x 11-3/4" Sheet (39.67 cm x 29.84 cm Sheet) Mesh-mounted	5/16"	<div><div>M</div><div>G</div></div>
	3" Fan Mosaic	12-3/4" x 13-1/2" Sheet (32.38 cm x 33.65 cm Sheet) Mesh-mounted	1/4"	<div><div>G</div></div>

M

 Matte Finish

G

 Glossy Finish

APPLICATIONS

	Target DCOF wet	Suitable
Dry & Level – Interior Floor	N/A	
Wet & Level – Interior Floor	≥ 0.42	
Shower Floors – Standard Center Drain	≥ 0.42	
Shower Floors – Linear Drain	≥ 0.42 (Mosaic)	
	≥ 0.60 (Floor)	
Exterior Floor Applications (including patios, pool decking & other wet areas with minimal footwear)	≥ 0.60	
Ramps & Inclines	≥ 0.65	
Walls/Backsplashes	N/A	✓
Countertops	N/A	
Pool Linings	N/A	✓*

A DCOF value of ≥0.42 is the standard for tiles specified for level interior spaces expected to be walked upon when wet, as stated in ANSI A137.1-A326.3. For more information about DCOF and the DCOF AcuTest™, visit [daltille.com/DCOF](https://daltille.com/DCOF).

APPLICATION NOTES:

Picket, Ripple, Kaleidoscope and Fan suitable for exterior applications in non-freezing climates only when proper installation methods are followed.

Bevel and Structural not recommended for exterior applications.

\* Kaleidoscope and Fan mosaic tile only

PERFORMANCE CHARACTERISTICS

	ASTM#	2 x 8 Ripple Wall Tile Result	2 x 6 Bevel Mosaic Result	1 x 4 Picket Mosaic Result	6 x 6 Kaleidoscope Mosaic Result	3 x 4 Structural Mosaic Result	3" Fan Mosaic Result
Water Absorption	C373	< 20%	< 20%	< 3.0%	< 3.0%	< 3.0%	< 3.0%
Breaking Strength	C648	120 - 230 lbf	120 - 230 lbf	> 250 lbf	> 250 lbf	> 250 lbf	> 250 lbf
Scratch Hardness	C1895	4.0 - 6.0	4.0 - 6.0	4.0 - 6.0	4.0 - 6.0	4.0 - 6.0	4.0 - 6.0
Chemical Resistance	C650	Resistant	Resistant	Resistant	Resistant	Resistant	Resistant

For additional information on test results, visit us at: [daltille.com/information/TestResults](https://daltille.com/information/TestResults).

INSTALLATION

Grout Joint Recommendation	Shade Variation
<b>2 x 8 Wall Tile:</b> 1/16" (when rectangular size is used in a staggered brick-joint pattern, overlap should not exceed 33%. Features a lugged edge that creates an automatic 1/16" grout joint.)	<div><div></div> Medium (V2) Picket (Solids) Kaleidoscope Structural Fan</div>
<b>Mosaic Tile:</b> 1/8"	<div><div></div> High (V3) Ripple Bevel</div>
<b>3" Fan Mosaic:</b> 1/16"	<div><div></div> Random (V4) Picket (Blends)</div>

NOTES

Since there are variations in all fired ceramic and natural products, tile and trim supplied for your particular installation may not match samples. Final confirmation should be made from actual tiles and trim prior to installation. Manufactured in accordance with ANSI A137.1 standards.

For additional information refer to "Factors to Consider" at: [daltille.com/Factors](https://daltille.com/Factors).

Random visuals enhance the natural beauty of this product. To achieve optimal results, all tile should be selected from multiple cartons and shading and graphic arrangement planned prior to installation.

Special care should be taken when grouting with dark pigmented colors. A grout release is recommended to prevent finely powdered pigments from lodging in the pores of the surface. Use of a latex modified thin-set is recommended for installation.

For 2 x 6 Bevel Crackle Only:

CAUTION

- Crackle tiles must be sealed with a penetrating sealer prior to grouting.
- Periodic resealing of crackle tile is required.
- Wall installation only where tile will not come into contact with staining agents including food.
- Not recommended for wet areas, countertops or floors.



ZEROTOX

7834 C.F. Hawn Freeway,  
Dallas, Texas 75217 | 1.800.933.TILE

To view the complete collection of Daltille® products and information, visit our website at [daltille.com](https://daltille.com).

 **daltille®**  
IMAGINE WHAT'S POSSIBLE™  
©2025 Daltille (10/25)