

RUBBER WALL & SCULPTURED BASE

PROSERIES™
daltile



RUBBER WALL & SCULPTURED BASE

A monochromatic, large-format rubber wall and sculptured base designed to elevate any commercial space. It delivers a seamless, refined transition from wall to floor, combining exceptional flexibility with superior resistance to scratches and scuffs. Available in six in-stock colors and six special-order options, ensuring the perfect match for every wall.

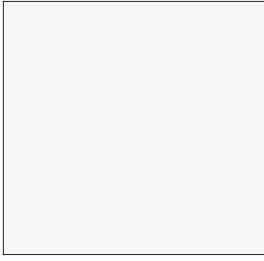


Cover photo features Rubber Wall and Sculptured Base, Tiramisu, 6 x 96 on the base of the wall and Loften™ Smoke Limestone, 12 x 24 on the floor.

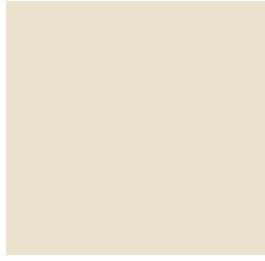
Above photo features Rubber Wall and Sculptured Base, S'more Mousse, 6 x 96 on the base of the wall and Loften™ Smoke Limestone, 12 x 24 on the floor.

RUBBER WALL & SCULPTURED BASE

STOCKING COLORS



VANILLA BEAN
RB41
SU41



SUGAR COOKIE
RB42
SU42



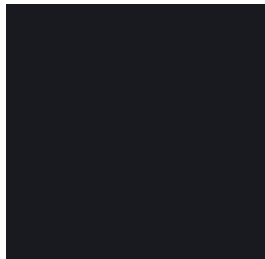
TIRAMISU
RB37
SU37



S'MORE MOUSSE
RB40
SU40



LICORICE
RB36
SU36



TRIFLE
RB39
SU39

SPECIAL ORDER COLORS



CREAM PUFF
RB31
SU31



FLAMBÉ
RB32
SU32



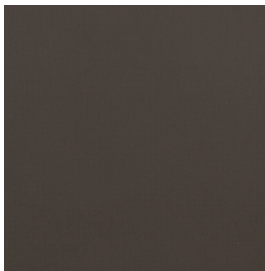
MACAROON
RB33
SU33



JAVA CHIP
RB38
SU38



TOFFEE
RB34
SU34



MOLTEN SOUFFLÉ
RB35
SU35

MOQ APPLIES AS FOLLOWING TO THE SPECIAL ORDER ITEMS:

WALL BASE:	2.5"	4"	6"
MOQ -ROLLS	64 CTNS	64 CTNS	40 CTNS
MOQ LENGTHS	104 CTNS	72 CTNS	48 CTNS

SCULPTURED BASE
2,400 IF = 50 CTNS

Notes:
RBXX is Rubber Base
SUXX is Sculptured Base

RUBBER WALL & SCULPTURED BASE

RUBBER BASE ROLL FORMAT - 4" x 120'



VANILLA BEAN
RB41
SU41

SUGAR COOKIE
RB42
SU42

TIRAMISU
RB37
SU37

S'MORE MOUSSE
RB40
SU40

TRIFLE
RB39
SU39

LICORICE
RB36
SU36

RUBBER BASE ROLL FORMAT - 6" x 96'



VANILLA BEAN
RB41
SU41

SUGAR COOKIE
RB42
SU42

TIRAMISU
RB37
SU37

S'MORE MOUSSE
RB40
SU40

TRIFLE
RB39
SU39

LICORICE
RB36
SU36

SCULPTURED BASE PILLAR FORMAT - 4-1/2" x 96"



VANILLA BEAN
RB41
SU41

SUGAR COOKIE
RB42
SU42

TIRAMISU
RB37
SU37

S'MORE MOUSSE
RB40
SU40

TRIFLE
RB39
SU39

LICORICE
RB36
SU36

SCULPTURED BASE INLET FORMAT - 4-1/2" x 96"



VANILLA BEAN
RB41
SU41

SUGAR COOKIE
RB42
SU42

TIRAMISU
RB37
SU37

S'MORE MOUSSE
RB40
SU40

TRIFLE
RB39
SU39

LICORICE
RB36
SU36

SCULPTURED BASE INLET FORMAT - 6" x 96"



VANILLA BEAN
RB41
SU41

SUGAR COOKIE
RB42
SU42

TIRAMISU
RB37
SU37

S'MORE MOUSSE
RB40
SU40

TRIFLE
RB39
SU39

LICORICE
RB36
SU36

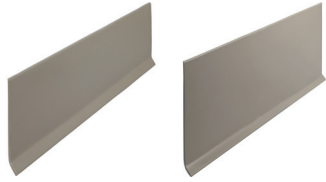
Notes:
RBXX is Rubber Base
SUXX is Sculptured Base

Please refer to actual samples for color accuracy.

RUBBER WALL & SCULPTURED BASE

RUBBER BASE ROLL FORMAT

STOCKED PROFILES*

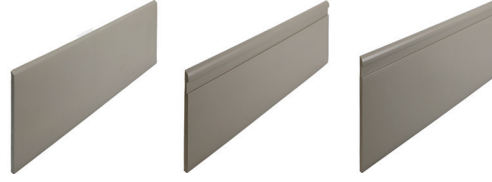


4" RUBBER WALL BASE ROLL4

6" RUBBER WALL BASE ROLL6

SCULPTURED BASE FORMAT

STOCKED PROFILES*



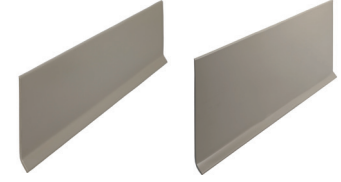
PILLAR PILL45

INLET INLET45

INLET INLET6

RUBBER BASE STICK FORMAT

SPECIAL ORDER PROFILES*



4" STICK STCK4

6" STICK STCK6

AVAILABLE FORMATS

STOCKING ORDER

Rubber Base Roll Format	4" Rubber Wall Base (4" x 120' x 1/8")
	6" Rubber Wall Base (6" x 96' x 1/8")
Sculptured Base Format	4.5" Pillar (4-1/2" x 96" x 1/4")
	4.5" Inlet (4-1/2" x 96" x 1/4")
	6" Inlet (6" x 96" x 1/4")

SPECIAL ORDER

Rubber Base Stick Format	4" Stick (4" x 48" x 1/8")
	6" Stick (6" x 48" x 1/8")

PERFORMANCE & CHARACTERISTICS

Construction:	High-grade resin, thermoplastic binders, fillers and pigments.
Gauge:	Varies by profile
Standard Specification for Resilient Wall Base:	ASTM F 1861 – Conforms
Flame Resistance:	<2.0
Smoke Density:	ASTM E 662 – <450
Critical Radiant Flux:	ASTM E648 or NFPA 253 Class I (>0.45 W/cm ²)
Heat Stability:	ASTM F1514 (300 hours) – ΔE* <8
Light Stability:	ASTM F1515 (300 hours) – ΔE* <8
Chemical Resistance:	ASTM F925 – Very Good/No more than slight change
Indoor Air Quality:	FloorScore Certified, TVOC <=0.5mg/m ³
Warranty:	10 years

Only install using recommended wall base adhesive.

7834 C.F. Hawn Freeway,
Dallas, Texas 75217 | 1.800.933.TILE

To view the complete collection of
Daltile® products and information,
visit our website at daltile.com/LVF

PROSERIES™
LUXURY VINYL FLOORING

daltile

©2026 Dal-Tile, LLC (04/26)