

2.0 mm | 12 mil  
**CYROSE™**  
GLUE DOWN

**PROSERIES™**  
LUXURY VINYL FLOORING  
daltile



**SuperGuardX™**  
REINFORCED SHIELD



SIZES:



6 x 48  
Plank

## 6 x 48 WOOD LOOK PLANKS



WHITE ASH CY30



COASTAL GREY CY31



BARNWOOD CY34



HONEY MAPLE CY32



EARLY AMERICAN CY33

2.0 mm | 12 mil  
**CYROSE™**  
GLUE DOWN



NOISE **REDUCING**



**EASY TO CLEAN**



**100% WATERPROOF**



**100% VIRGIN VINYL**

**DESIGN & SIZE**

Product Type:	LVF Dry Back
Installation:	Glue Down
Thickness:	2.0 mm
Wear Layer:	12 mil (0.3048 mm)
Finish:	Enhanced Urethane
Size:	6" W x 48" L Plank
Underlayment:	N/A
Bevel:	No Bevel
Embossing:	Embossed
Plank Variation:	6
Sq. Ft./Carton:	54
Pieces/Carton:	27
Weight:	1.35 lbs per piece   37.7 lbs per carton
Installation & Adhesive:	Glue down and install using ProSeries by Daltile Adhesive; see daltile.com/LVF for more recommended installation and adhesive information
Warranty:	Limited 25 Year Residential Warranty Limited 10 Year Multifamily Warranty Limited 7 Year Light Commercial Warranty
Special Order Platform:	Additional Platforms available on special order. Minimum order quantities apply. Contact your Daltile representative for additional information.
*Special Order Transitions:	Slim Trim 4-in-1 Transition, Extra Tall Stair Nose, Full Round Stair Tread, Round Stair Nose, Quarter Round, and Slim Cap.

**PERFORMANCE & CHARACTERISTICS**

Construction:	Commercial Grade Luxury Vinyl Flooring; 100% Virgin
Classification:	ASTM F1700 - Class III, Type A - Smooth, Type B - Embossed
Squareness:	ASTM F2055 - Passes - $\pm 0.010$ " max
Size and Tolerance:	ASTM F2055 - Passes - $\pm 0.064$ in. / linear foot
Thickness:	ASTM F386 - Passes - as specified $\pm 0.008$ in
Flexibility:	ASTM F137 - Passes - 1" mandrel
Dimensional Stability:	ASTM F2199-Passes Residential & Commercial- Res 0.25% / lin ft. (305 mm) avg max Comm 0.20% / lin ft. (305 mm) avg max
Static Load Limit:	ASTM F970 - Passes, Average $\leq 0.005$ in.
Residual Indentation:	ASTM F1914 - Passes - $\leq 8\%$
Resistance To Chemicals:	ASTM F925 - Passes - No more than a slight change
Resistance To Light:	ASTM F1515 - Passes - $\Delta E \leq 8$
Resistance To Heat:	ASTM F1514 - Passes - Average $\Delta E < 8.0$
Critical Radiant Flux:	ASTM E648 - Passes - Class 1 ( $> 0.45$ W/cm <sup>2</sup> )
Smoke Density:	ASTM E662 Part A - Passes - $< 450$



7834 C.F. Hawn Freeway,  
Dallas, Texas 75217 | 1.800.933.TILE

To view the complete collection of  
Daltile® products and information,  
visit our website at [daltile.com/LVF](https://daltile.com/LVF)

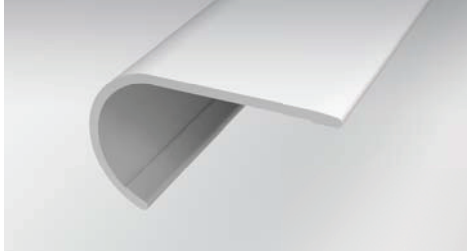
**PROSERIES™**  
LUXURY VINYL FLOORING  


©2024 Dal-Tile, LLC (4/24)

Six trims and moldings that are designed to coordinate with each of our existing colors within the collection.

<b>VRDSN:</b>	Round Stair Nose (1-3/4" x 94")	<b>EXTSN:</b>	Extra Tall Stair Nose (2" x 94")
<b>VQRND:</b>	Quarter Round (3/4" x 94")	<b>RNDSTRD:</b>	Full Round Stair Tread (12-1/5" x 50")
<b>VSLCAP:</b>	Slim Cap, Low Profile End Cap (1-3/8" x 94")	<b>SLIMIT:</b>	Slim Trim 4-in-1 Transition (2" x 94") , Four unique trims and moldings in one single SKU (T-Molding, Hard Surface Reducer, Carpet Transition, End Cap)

### SPECIAL ORDER ITEMS:



#### Round Stair Nose

Creates a transition to the edge of the step by overlapping the flooring on the back end. Can also be installed flush on floors with an overall thickness up to 4 mm.\*



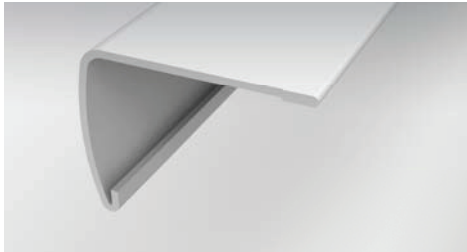
#### Quarter Round

Conceals the expansion space between the wall and the flooring.



#### Slim Cap

Low profile end cap used to transition from flooring to carpet, masonry, sliding doors, and other exterior door jambs.



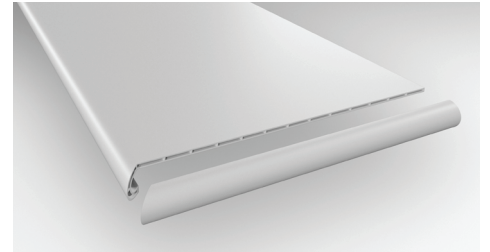
#### Extra Tall Stair Nose

Creates a transition to the edge of the step by overlapping the flooring on the back end. Can also be installed flush on floors with an overall thickness up to 4 mm.\*



#### Slim Trim 4-in-1 Transition

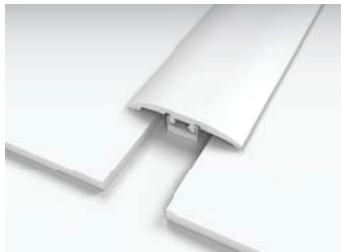
Performance Accessories' exclusive 4-in-1 transition allows you to utilize a single transition for four different applications.



#### Full Round Stair Tread

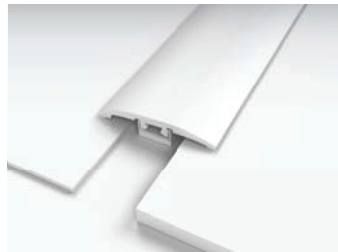
A vinyl stair tread with pre-attached stair nosing. Can be used on steps with or without nosing.

### EACH OF THE BELOW ARE ACHIEVED VIA THE SLIM TRIM 4-IN-1 TRANSITION (SHOWN ABOVE)



#### T-Molding

Used to transition between flooring of equal heights and in doorways.



#### Hard Surface Reducer

Connects two floors of different heights.



#### End Molding

Finishing up to a threshold, sliding door, etc.



#### Carpet Transition

Provides a smooth transition between your hard surface floor & carpet. A carpet tap down trim must be used & is sold at your local hardware store.