



CONCRETE LOOK

FLOOR

PORTFOLIO VIVID™

COLORBODY™ PORCELAIN



 **daltile**®
IMAGINE WHAT'S POSSIBLE™

FLOOR

PORTFOLIO VIVID™

COLORBODY™ PORCELAIN

Celebrate with Color

Create a vibrant space with the concrete-look of Portfolio Vivid™. This collection is perfect for lively commercial settings like schools and entertainment venues. Add color to your design schemes with Portfolio Vivid™.

- **COORDINATING COLORS**

- Generation Z Yellow, Emerald Green, Electric Blue, and Crimson Red coordinate with Portfolio Confetti™
- Offered in 12 x 24 size and 3 x 12 bullnose for finishing trim

- **VIVACIOUS VIBES**

- Crafted for commercial designs
- Made in the USA

CONCRETE LOOK

USAGE



FLOOR



WALL



COUNTERTOP



SHOWER
FLOOR



EXTERIOR
FLOOR



STEPWISE™



TRU-EDGE™



MADE IN
THE U.S.A.



LARGE
FORMAT



MOSAIC/
DECO



ENCAUSTIC



TERRAZZO



PAVER



CUSTOMIZE



FLEXFIT™



LOW HIGH

SEE CHARTS FOR FULL
PRODUCT DETAILS

SPECIAL FEATURES

Photo features Portfolio Vivid™ Ocean Blue 12 x 24 and Portfolio Confetti™ Dove Grey 12 x 24 on the floor.

CONCRETE LOOK

FLOOR
PORTFOLIO VIVID™
COLORBODY™ PORCELAIN

SIZES:

12 x 24
Floor Tile

FINISHES: MATTE

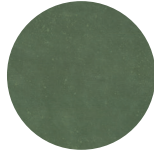
COLOR PALETTE



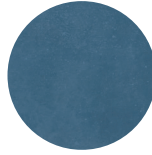
GENERATION Z
YELLOW



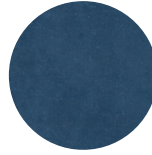
ORANGE
BURST



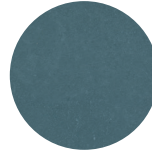
EMERALD
GREEN



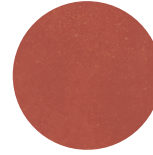
ELECTRIC
BLUE



SEA
BREEZE



OCEAN
BLUE



CRIMSON
RED



PLUM
CRAZY

COLORBODY™ PORCELAIN FLOOR TILE



GENERATION Z YELLOW PF22



ORANGE BURST PF23



EMERALD GREEN PF24



ELECTRIC BLUE PF25



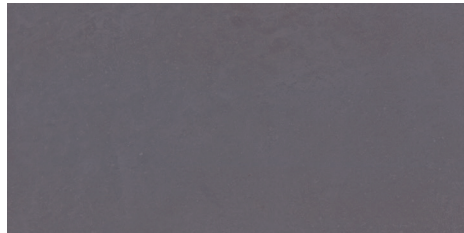
SEA BREEZE PF26



OCEAN BLUE PF27



CRIMSON RED PF28



PLUM CRAZY PF29



SLIP RESISTANT



WATERPROOF



STAINPROOF



DENTPROOF



SCRATCH-RESISTANT¹
¹Applicable to products with Matte and Textured Finishes



FIRE-RESISTANT²
²Not Applicable to Mesh-Mounted Mosaics




CLIMATEPRO™



SIMPLICLEAN™

VISIT THE WHY TILE PAGE AT WWW.DAL TILE.COM FOR A COMPLETE LIST OF QUALIFICATIONS AND EXCLUSIONS.

SIZES

			Thickness	Sq. Ft./ Carton	Pieces/ Carton
	12 x 24 Floor Tile	(11-5/8" x 23-3/8") (29.56 cm x 59.44 cm)	5/16"	15.12	8

APPLICATIONS

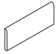
	Target DCOF wet	Suitable
Dry & Level – Interior Floor	N/A	✓
Wet & Level – Interior Floor	≥ 0.42	✓
Shower Floors (Residential or Light Commercial)	≥ 0.42	
Exterior Floor Applications (including pool decking & other wet areas with minimal footwear)	≥ 0.60	
Ramps & Inclines	≥ 0.65	
Walls/Backsplashes	N/A	✓
Countertops	N/A	✓
Pool Linings	N/A	

A DCOF value of ≥0.42 is the standard for tiles specified for level interior spaces expected to be walked upon when wet, as stated in ANSI A137.1-A326.3. For more information about DCOF and the DCOF AcuTest™, visit daltille.com/DCOF.


APPLICATION NOTES:

Suitable for exterior applications in freezing and non-freezing climates, when proper installation methods are followed.

TRIM

Type	Number	Size	Pieces per Carton
 Bullnose	P-43C9	3 x 12	30

INSTALLATION

Grout Joint Recommendation	Shade Variation
Floor: 1/8" (3/16" when multiple sizes are installed in a modular pattern, and/or when installing tile with a length 15" or greater in a staggered brick-joint pattern; overlap should not exceed 33%)	 Medium (V2)

PERFORMANCE CHARACTERISTICS

	ASTM#	Result
Water Absorption	C373	< 0.5%
Breaking Strength	C648	> 275 lbs
Scratch Hardness	MOHS	8.0
Chemical Resistance	C650	Resistant
Abrasion Resistance	C1027	N/A

For additional information on test results, visit us at: daltille.com/information/TestResults.

NOTES

Since there are variations in all fired ceramic and natural products, tile and trim supplied for your particular installation may not match samples. Final confirmation should be made from actual tiles and trim prior to installation. Manufactured in accordance with ANSI A137.1 standards.

Not for use on ramps. Water, oil, grease, improper drainage and certain footwear can create slippery conditions. Floor applications expected to be exposed to these conditions require extra caution in product selection.

For additional information refer to "Factors to Consider" at: daltille.com/Factors.

Special consideration needs to be given when installing tiles greater than 15 inches. Please refer to daltille.com/LargeTiles for more information.

Special care should be taken when grouting with dark pigmented colors. A grout release is recommended to prevent finely powdered pigments from lodging in the pores of the surface. Use of a latex modified thin-set is recommended for installation.



All or select items within this series meet the requirements for these qualifications. For more information, visit daltille.com.