



MONOCHROMATIC
LOOK

HARMONIST™
COLORBODY™ PORCELAIN

HARMONIST™

COLORBODY™ PORCELAIN

Powerful Performance With The Look of Luxury

Serenely beautiful, yet tremendously strong and durable, Harmonist™ is a study in contrasts. With its fashionably luxurious look, you would never guess that it can withstand the toughest stains and even frost. Evenly colored throughout its porcelain body, Harmonist will retain its magnificence for years. Available in a range of colors and a matte surface finish.

Cover photo features Harmonist™ Aura, 12 x 24 on the floor.
Above photo features Harmonist™ Composure, 12 x 12 on the floor.



MONOCHROMATIC LOOK

USAGE



WALL



COUNTERTOP



SHOWER FLOOR



EXTERIOR FLOOR



STEPWISE™



TRU-EDGE™



MADE IN THE U.S.A.



LARGE FORMAT



MOSAIC/DECO



ENCAUSTIC



TERRAZZO



PAVER



CUSTOMIZE



FLEXFIT™



PC

LOW HIGH

SPECIAL FEATURES

NOT APPLICABLE FOR ALL PRODUCTS IN THIS SERIES. SEE CHARTS FOR FULL PRODUCT DETAILS.

SIZES:



FINISHES: MATTE | TEXTURED | TREAD

SOLID FLOOR TILE



SERENE HM20 (1)



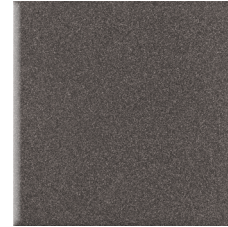
TRANQUIL HM21 (1)



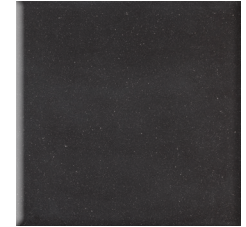
BLISS HM22 (1)



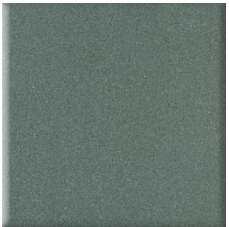
COMPOSURE HM23 (1)



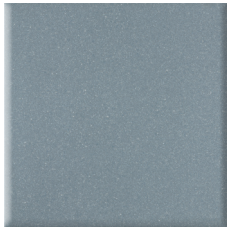
AMBIANCE HM24 (1)



AURA HM25 (1)



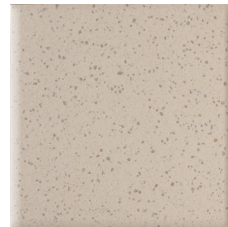
DESTINY HM26 (1)



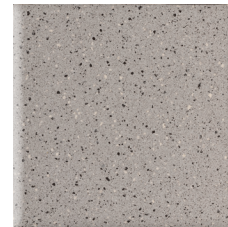
PROMISE HM27 (1)



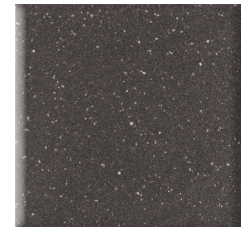
HAVEN HM28 (1)



POISE HM29 (2)



CELESTIA HM30 (2)



RHYTHM HM31 (2)



AMITY HM32 (3)



SERENADE HM33 (3)



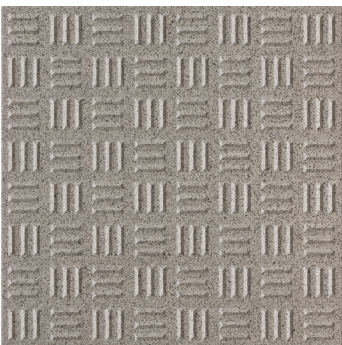
PEACE HM34 (3)



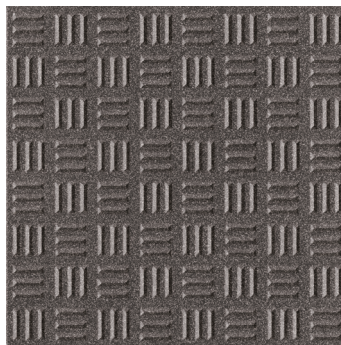
REPOSE HM35 (3)

TREAD FLOOR TILE*

(Available in 8.4mm & 12.0mm Thickness)



COMPOSURE HM23 (1)



AMBIANCE HM24 (2)

TEXTURED FLOOR TILE*

(Available in 8.4mm & 12.0mm Thickness)



COMPOSURE HM23 (1)



AMBIANCE HM24 (2)

*See size availability chart.



SLIP RESISTANT



WATERPROOF



STAINPROOF



DENTPROOF



SCRATCH-RESISTANT™
*Applicable to products with Matte and Textured Finishes



FIRE-RESISTANT™
*Not Applicable to Mesh-Mounted Tiles



CLIMATEPRO™









SIMPLICLEAN™

HARMONIST™

COLORBODY™ PORCELAIN

MONOCHROMATIC LOOK

SIZES

			Thickness	Sq. Ft./ Carton	Pieces/ Carton
	12 x 24 Floor Tile	(11-13/16" x 23-5/8") (30.00 cm x 60.00 cm)	3/8"	11.64	6
	12 x 12 Floor Tile	(11-13/16" x 11-13/16") (30.00 cm x 30.00 cm)	5/16"	14.55	15
	12 x 12 Floor Tile Textured Structure*	(11-13/16" x 11-13/16") (30.00 cm x 30.00 cm)	5/16"	14.55	15
	12 x 12 Floor Tile Textured Structure*	(11-13/16" x 11-13/16") (30.00 cm x 30.00 cm)	7/16"	14.55	15
	8 x 8 Floor Tile Tread & Textured Structure**	(7-7/8" x 7-7/8") (20.00 cm x 20.00 cm)	5/16"	12.92	30
	8 x 8 Floor Tile Tread & Textured Structure*	(7-7/8" x 7-7/8") (20.00 cm x 20.00 cm)	7/16"	12.92	30

* Available in HM23 & HM24 only.
 ** Available via special order only.

APPLICATIONS

	Target DCOF wet	Suitable
Dry & Level – Interior Floor	N/A	✓
Wet & Level – Interior Floor	≥ 0.42	✓
Shower Floors - Standard Center Drain (Residential or Commercial)	≥ 0.42	
Shower Floors - Linear Drain	≥ 0.60	✓
Exterior Floor Applications (including patios, pool decking & other wet areas with minimal footwear)	≥ 0.60	✓*
Ramps & Inclines	≥ 0.65	
Walls/Backsplashes	N/A	✓
Countertops	N/A	✓
Pool Linings	N/A	

A DCOF value of ≥0.42 is the standard for tiles specified for level interior spaces expected to be walked upon when wet, as stated in ANSI A137.1-A326.3. For more information about DCOF and the DCOF AcuTest™, visit daltile.com/DCOF.

APPLICATION NOTES:


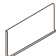

Suitable for exterior applications (provided it is noted as suitable in the applications chart above) in freezing and non-freezing climates, when proper installation methods are followed.

* Tread and Textured Structures only.

TREAD & TEXTURED AVAILABILITY

Size	Thickness	Finish	HM23	HM24
12 x 12	5/16"	Tread	N/A	N/A
12 x 12	5/16"	Textured	Special Order	Special Order
12 x 12	7/16"	Tread	N/A	N/A
12 x 12	7/16"	Textured	Stock	Stock
8 x 8	5/16"	Tread	Special Order	Special Order
8 x 8	5/16"	Textured	Special Order	Special Order
8 x 8	7/16"	Tread	Stock	Stock
8 x 8	7/16"	Textured	Stock	Stock

TRIM

	Type	Number	Size	Pieces/ Carton
	Bullnose	44C9	4 x 12	38
	Cove Base	36C9TP	6 x 12	28
	Cove Base Outcorner	36C9TP	1 x 6	10

Cove base trim is intended to coordinate with floor tile in the standard 90-degree installation position.

INSTALLATION

Grout Joint Recommendation

Shade Variation

Floor: 3/16" (Overlap should not exceed 33% when installing tile with a length 15" or greater in a staggered brick-joint pattern. When multiple sizes are installed in a modular pattern, please specify same size caliber at time of order.)



PERFORMANCE CHARACTERISTICS

	ASTM#	Result
Water Absorption	C373	< 0.5%
Breaking Strength	C648	> 275 lbs
Scratch Hardness	MOHS	8.0
Chemical Resistance	C650	Resistant

For additional information on test results, visit us at: daltile.com/information/TestResults.

DURABILITY

Floor Surface Wear Resistance

1	Residential Bathrooms	3	All Residential / Light Commercial
2	All Residential Areas	④	All Residential / Commercial

NOTES

Since there are variations in all fired ceramic and natural products, tile and trim supplied for your particular installation may not match samples. Final confirmation should be made from actual tiles and trim prior to installation. Manufactured in accordance with ANSI A137.1 standards.

Not for use on ramps. Water, oil, grease, improper drainage and certain footwear can create slippery conditions. Floor applications expected to be exposed to these conditions require extra caution in product selection.

Special consideration needs to be given when installing tiles greater than 15 inches. Please refer to daltile.com/LargeTiles for more information.

Special care should be taken when grouting with dark pigmented colors. A grout release is recommended to prevent finely powdered pigments from lodging in the pores of the surface. Use of a latex modified thin-set is recommended for installation.

For additional information refer to "Factors to Consider" at: daltile.com/Factors.



7834 C.F. Hawn Freeway,
Dallas, Texas 75217 | 1.800.933.TILE

To view the complete collection of Daltile® products and information, visit our website at daltile.com.

