



CONCRETE LOOK

COHESION™
COLORBODY™ PORCELAIN

COHESION™

COLORBODY™ PORCELAIN

Cohesion delivers a sophisticated blend of outstanding durability and style in seven contemporary, on-trend colors. The ColorBody™ porcelain tile offers peak performance, and the rectified edge provides a seamless, unified look in large areas. Select from the significant size offering with our popular 12 x 24, available in matte, polished and textured. Take on more ground with our large format 24 x 24 or the extra-large 24 x 48, both available in matte and polished. Cohesion provides style that's built to last.

CONCRETE LOOK

USAGE



FLOOR



WALL



COUNTERTOP



SHOWER FLOOR



EXTERIOR FLOOR



STEPWISE™



TRU-EDGE™



MADE IN THE U.S.A.



LARGE FORMAT



MOSAIC/DECO



ENCAUSTIC



TERRAZZO



PAVER



CUSTOMIZE



FLEXFIT™



COHESION PORCELAIN

SPECIAL FEATURES



NOT APPLICABLE FOR ALL PRODUCTS IN THIS SERIES. SEE CHARTS FOR FULL PRODUCT DETAILS.

Cover photo features Cohesion™ White 24 x 24 textured on the wall, Taupe 24 x 48 matte on the floor and Panoramic Porcelain Surfaces™, Elemental Selection, Gypsum Calacatta 12mm on the front desk.

Above photo features Cohesion™ Light Grey 12 x 24 matte on the floor, Natural Quartzite Stone Slab, Lamberti Bianco, 3cm on the counter and Pietra Divina™ Namaste Gold Blend spectrum mosaic on the column.

SIZES:

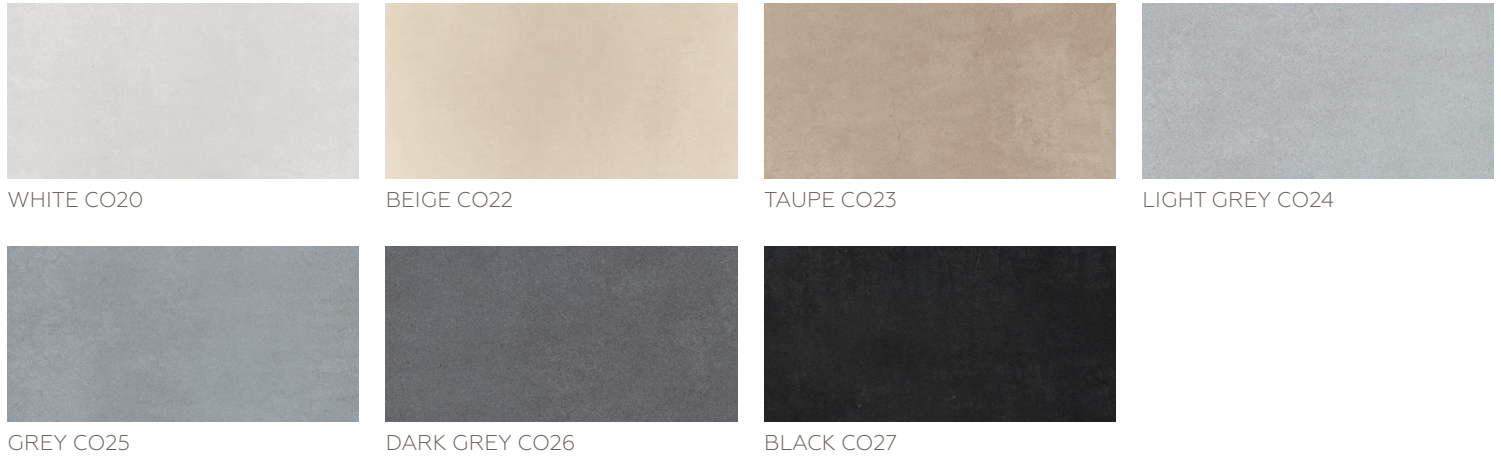


FINISHES: MATTE | POLISHED | TEXTURED

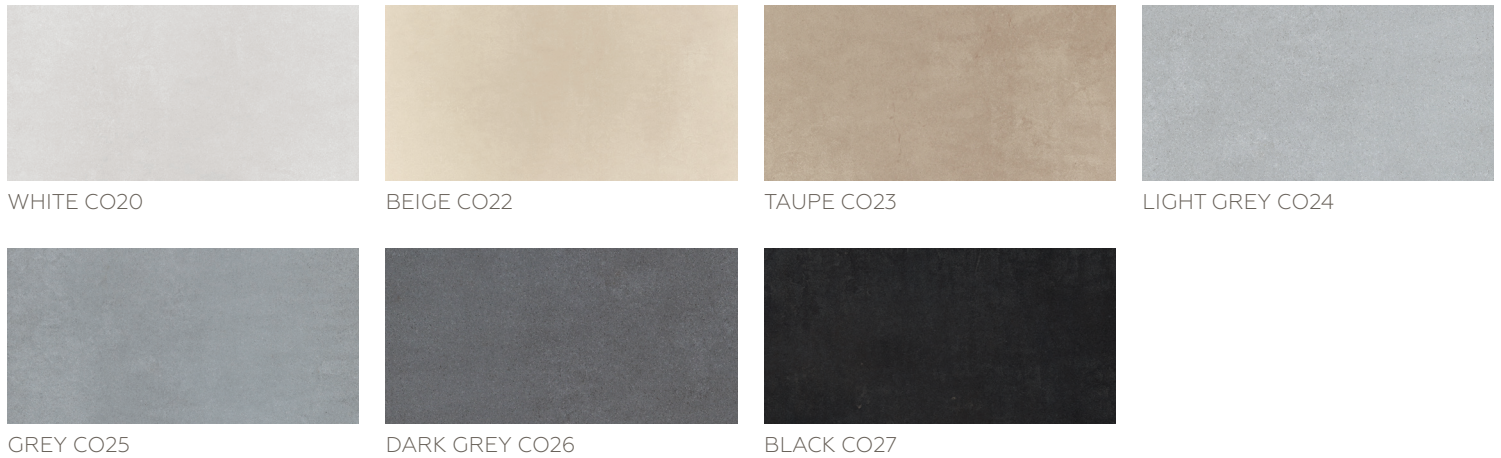
COLOR PALETTE



MATTE FIELD TILE



POLISHED FIELD TILE



- 
SLIP RESISTANT
- 
WATERPROOF
- 
STAINPROOF
- 
DENTPROOF
- 
SCRATCH-RESISTANT*
*Applicable to products with Matte and Textured Finishes
- 
FIRE-RESISTANT
- 
CLIMATEPRO™
- 
SIMPLICLEAN™

VISIT THE WHY TILE PAGE AT WWW.DAL TILE.COM FOR A COMPLETE LIST OF QUALIFICATIONS AND EXCLUSIONS.

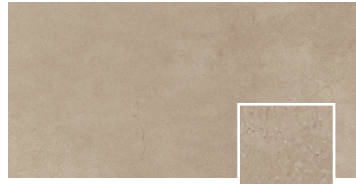
TEXTURE FIELD TILE



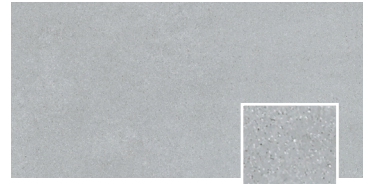
WHITE CO20



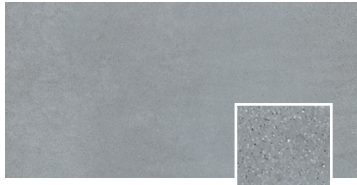
BEIGE CO22



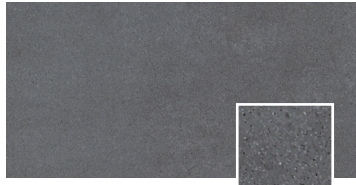
TAUPE CO23



LIGHT GREY CO24



GREY CO25



DARK GREY CO26



BLACK CO27

SIZES

			Thickness	Sq. Ft./ Carton	Pieces/ Carton
	24 x 48 Floor Tile (Matte & Polished)	(23-1/2" x 47-1/16") (59.70 cm x 119.60 cm)	3/8"	15.37	2
	24 x 24 Floor Tile (Matte, Polished & Textured*)	(23-1/2" x 23-1/2") (59.70 cm x 59.70 cm)	3/8"	11.51	3
	12 x 24 Floor Tile (Matte, Polished & Textured)	(11-11/16" x 23-1/2") (29.75 cm x 59.70 cm)	3/8"	9.56	5

* 24 x 24 Textured available via special order only

APPLICATIONS

	Target DCOF wet	Suitable
Dry & Level – Interior Floor	N/A	✓
Wet & Level – Interior Floor	≥ 0.42	✓*
Shower Floors (Residential or Light Commercial)	≥ 0.42	
Exterior Floor Applications, (including patios, pool decking & other wet areas with minimal footwear)	≥ 0.60	✓**
Ramps & Inclines	≥ 0.65	
Walls/Backsplashes	N/A	✓
Countertops	N/A	✓
Pool Linings	N/A	

A DCOF value of ≥0.42 is the standard for tiles specified for level interior spaces expected to be walked upon when wet, as stated in ANSI A137.1-A326.3. For more information about DCOF and the DCOF AcuTest™, visit daltile.com/DCOF.

APPLICATION NOTES:

Suitable for exterior applications (provided it is noted as suitable in the applications chart above.) in freezing and non-freezing climates, when proper installation methods are followed.

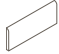


- * Matte and Textured surfaces only
- ** Textured surface only

PERFORMANCE CHARACTERISTICS

	ASTM#	Result
Water Absorption	C373	< 0.5%
Breaking Strength	C648	> 275 lbs
Scratch Hardness	MOHS	8.0
Chemical Resistance	C650	Resistant


For additional information on test results, visit us at: daltile.com/information/TestResults.

TRIM

	Type	Number	Size	Pieces/ Carton
	Bullnose (Matte and Polished)	S43F9	3 x 24	13
	Cove Base	S36C9TA	6 x 12	20
	Cove Base Outcorner	SC36C9TA	1 x 6	10

Cove base trim is intended to coordinate with floor tile in the standard 90-degree installation position.

INSTALLATION

Grout Joint Recommendation	Shade Variation
1/8" (3/16" when multiple sizes are installed in a modular pattern, and when installed in a staggered brick-joint pattern; overlap should not exceed 33%)	 Medium (V2)

DURABILITY

Floor Surface Wear Resistance

1 Residential Bathrooms	3	All Residential / Light Commercial
2 All Residential Areas	④	All Residential / Commercial

NOTES

Since there are variations in all fired ceramic and natural products, tile and trim supplied for your particular installation may not match samples. Final confirmation should be made from actual tiles and trim prior to installation. Manufactured in accordance with ANSI A137.1 standards.

Not for use on ramps. Water, oil, grease, improper drainage and certain footwear can create slippery conditions. Floor applications expected to be exposed to these conditions require extra caution in product selection.

For additional information refer to "Factors to Consider" at: daltile.com/Factors.

Random visuals enhance the natural beauty of this product. To achieve optimal results, all tile should be selected from multiple cartons and shading and graphic arrangement planned prior to installation.

Special consideration needs to be given when installing tiles greater than 15 inches. Please refer to daltile.com/LargeTiles for more information.

Special care should be taken when grouting with dark pigmented colors. A grout release is recommended to prevent finely powdered pigments from lodging in the pores of the surface. Use of a latex modified thin-set is recommended for installation.

 **PRE-CONSUMER RECYCLED MATERIALS**

All or select items within this series meet the requirements for these qualifications. For more information, visit daltile.com.