

# SUBTLE STRANDS™

COLORBODY™ PORCELAIN

AMERICAN OLEAN®



CONCRETE LOOK



AMERICAN OLEAN®  
PROVEN IN TILE™



# SUBTLE STRANDS™

Soft, woven movements mark this minimalist concrete-look tile. Ready to withstand heavy foot traffic, Subtle Strands is a ColorBody™ porcelain tile available in a variety of neutral shades and most popular sizes. An understated textured surface adds interest and depth while the calming color selection creates a unified space. Your design project is complete with Subtle Strands.



Cover photo features Subtle Strands™ Chalk, 12 x 24 on the floor. Above photo features Subtle Strands™ Breeze, 24 x 24 on the floor and Dune, 3 x 3 mosaic on the wall.



# SUBTLE STRANDS™

COLORBODY™ PORCELAIN

AMERICAN OLEAN®

FINISHES: MATTE

## USAGE



## MATERIAL



## PRICING



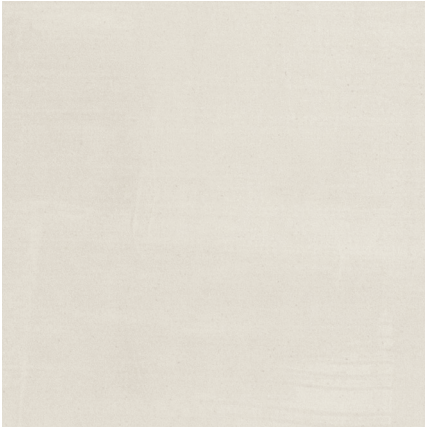
## SPECIAL FEATURES



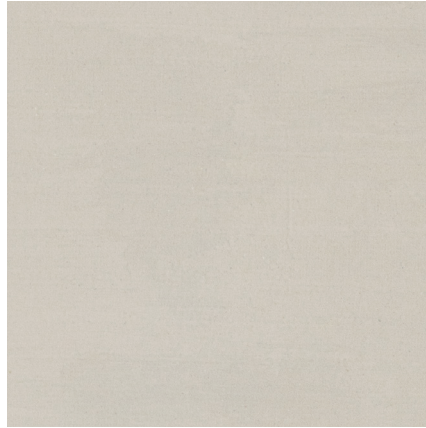
NOT APPLICABLE FOR ALL PRODUCTS IN THIS SERIES. SEE CHARTS FOR FULL PRODUCT DETAILS.

CONCRETE LOOK

## FLOOR TILE



CHALK SS35



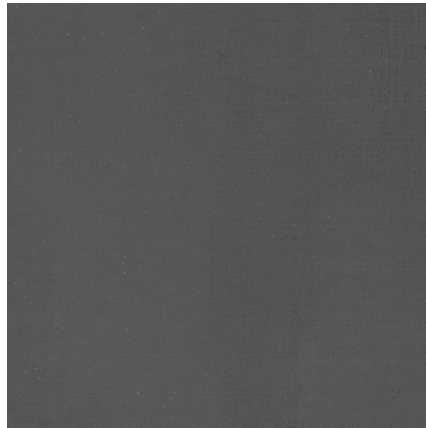
DUNE SS36



BREEZE SS37

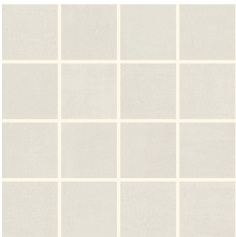


STONE SS38

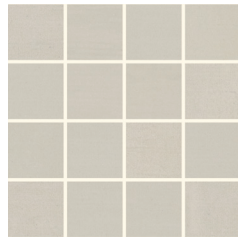


CHARCOAL SS39

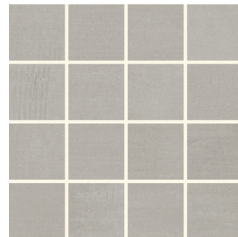
## 3 x 3 MOSAIC - 12 x 12 SHEET



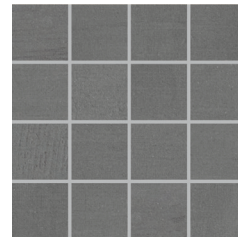
CHALK SS35



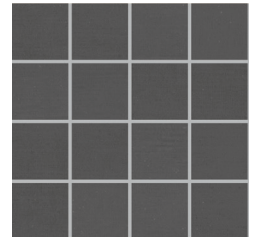
DUNE SS36



BREEZE SS37



STONE SS38



CHARCOAL SS39



VISIT [AMERICANOLEAN.COM/WHYTILE](http://AMERICANOLEAN.COM/WHYTILE) FOR A COMPLETE LIST OF QUALIFICATIONS AND EXCLUSIONS.

# SUBTLE STRANDS™

COLORBODY™ PORCELAIN

AMERICAN OLEAN®

FINISHES: MATTE

## USAGE



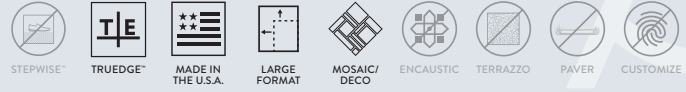
## MATERIAL



## PRICING



## SPECIAL FEATURES



NOT APPLICABLE FOR ALL PRODUCTS IN THIS SERIES. SEE CHARTS FOR FULL PRODUCT DETAILS.

## CONCRETE LOOK

## SIZES

			THICKNESS	SQ. FT./ CARTON	PIECES/ CARTON
	24 x 24 Floor Tile	23-3/8" x 23-3/8" (59.44 cm x 59.44 cm)	5/16"	15.21	4
	12 x 24 Floor Tile	11-5/8" x 23-3/8" (29.56 cm x 59.44 cm)	5/16"	17.02	9
	3 x 3 Mosaic (Mesh-mounted)	12" x 12" Sheet (30.48 cm x 30.48 cm Sheet)	5/16"	7.00	7

## APPLICATIONS

	TARGET DCOF WET	SUITABLE
Dry & Level – Interior Floor	N/A	●
Wet & Level – Interior Floor	≥ 0.42	●
Shower Floors – Standard Center Drain (Residential or Commercial)	≥ 0.42	●*
Shower Floors – Linear Drain	≥ 0.42	●*
Exterior Floor Applications (including patios, pool decking & other wet areas with minimal footwear)	≥ 0.60	
Ramps & Inclines	≥ 0.65	
Walls/Backsplashes	N/A	●
Countertops	N/A	●
Pool Linings	N/A	●*

A DCOF value of ≥ 0.42 is the standard for level interior spaces expected to be walked upon when wet, as stated in ANSI A137.1-A326.3. For more information about DCOF and the DCOF AcuTest™, visit [americanolean.com/DCOF](http://americanolean.com/DCOF).

### APPLICATION NOTES:

Suitable for exterior applications (provided it is noted as suitable in the applications chart above) in freezing and non-freezing climates, when proper installation methods are followed.

\* 3 x 3 Mosaic tile only.

## FEATURES



All or select items within this series meet the requirements for these qualifications. For more information visit [americanolean.com](http://americanolean.com).

## TRIM

			NUMBER	PIECES/ CARTON
	Floor Bullnose	3 x 24	P43F9	10
	Cove Base	6 x 12	P36C9	22
	Cove Base Outcorner	1 x 6	PC36C9	15

Cove base trim is intended to coordinate with floor tile in the standard 90-degree installation position.

## INSTALLATION

Grout Joint Recommendation	Shade Variation
<p><b>Floor:</b> 1/8" (3/16" when multiple sizes are installed in a modular pattern, and/or when installing tile with a length 15" or greater in a staggered brick-joint pattern; overlap should not exceed 33%.)</p> <p><b>Mosaic:</b> 1/8"</p>	<p>MEDIUM (V2)</p>

## PERFORMANCE CHARACTERISTICS

	ASTM#	RESULTS
Water Absorption	C373	< 0.5%
Breaking Strength	C648	> 275 lbs.
Scratch Hardness	MOHS	8.0
Chemical Resistance	C650	Resistant

For additional information on test results, visit us at: [americanolean.com/information/TestResults](http://americanolean.com/information/TestResults).

## DURABILITY

### Floor Surface Wear Resistance

1 Residential Bathrooms	3 All Residential / Light Commercial
2 All Residential Areas	④ All Residential / Commercial

## NOTES

Since there are variations in all fired ceramic and natural products, tile and trim supplied for your particular installation may not match samples. Final confirmation should be made from actual tiles and trim prior to installation. Manufactured in accordance with ANSI A137.1 standards.

Not for use on ramps. Water, oil, grease, improper drainage and certain footwear can create slippery conditions. Floor applications expected to be exposed to these conditions require extra caution in product selection.

For additional information refer to "Factors to Consider" at: [americanolean.com/Factors](http://americanolean.com/Factors).

To achieve optimal results, all tile should be selected from multiple cartons and shading and graphic arrangement planned prior to installation.

Special consideration needs to be given when installing tiles greater than 15 inches. Please refer to [americanolean.com/LargeTiles](http://americanolean.com/LargeTiles) for more information.

Special care should be taken when grouting with dark pigmented colors. A grout release is recommended to prevent finely powdered pigments from lodging in the pores of the surface. Use of latex modified thin-set is recommended for installation.

888.AOT.TILE



AMERICAN OLEAN®  
PROVEN IN TILE™

AMERICANOLEAN.COM

©2024 AMERICAN OLEAN (10/24)