

STUDIO HAVEN™

GLAZED CERAMIC WALL AND MOSAIC

AMERICAN OLEAN®



WALL



AMERICAN OLEAN®
PROVEN IN TILE™

STUDIO HAVEN™

Inspired by the popular hand crafted look, Studio Haven offers a beautiful variety of colors and versatile sizes. Create dynamic, modular patterns with the 4 x 4 and 4 x 12 sizes, add depth with a glossy picket mosaic, or opt for a matte hexagon mosaic, ideal for the shower floor. This series showcases distinct variations in tone and shade, offering something new to look at whenever you enter the room. Elevate your space with Studio Haven — where the charm of traditional craftsmanship meets modern elegance.



Cover photo features Espresso, 4 x 4 on the wall and island.
Above photo features Shea 4 x 4 on the walls and 1-1/2 hexagon mosaic on the floor.

USAGE



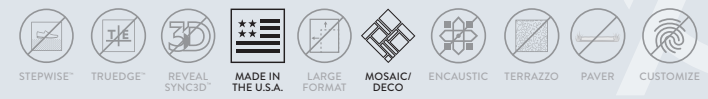
MATERIAL



PRICING



SPECIAL FEATURES



NOT APPLICABLE FOR ALL PRODUCTS IN THIS SERIES. SEE CHARTS FOR FULL PRODUCT DETAILS.

WALL

4 X 12 HAND CRAFTED WALL TILE



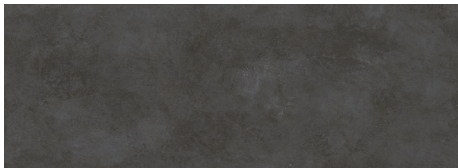
PLUME SN70



SHEA SN71



ALMOND SN72



FOG SN73



HONEY SN74



ESPRESSO SN75

4 X 4 HAND CRAFTED WALL TILE



PLUME SN70



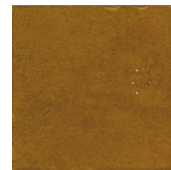
SHEA SN71



ALMOND SN72



FOG SN73



HONEY SN74



ESPRESSO SN75

2 X 5 HAND CRAFTED PICKET MOSAIC TILE



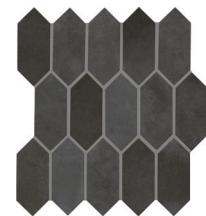
PLUME SN70



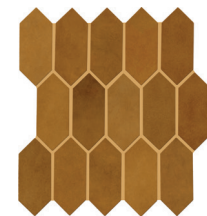
SHEA SN71



ALMOND SN72



FOG SN73



HONEY SN74

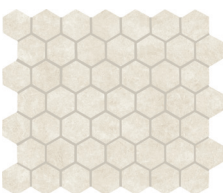


ESPRESSO SN75

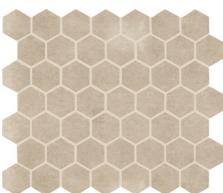
1.5 HAND CRAFTED HEXAGON MOSAIC TILE



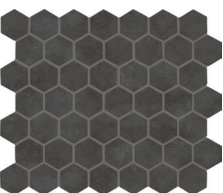
PLUME SN76



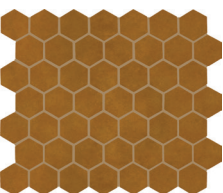
SHEA SN77



ALMOND SN78



FOG SN79



HONEY SN82



ESPRESSO SN83



SLIP RESISTANT



STAINPROOF



DENTPROOF



SCRATCH-RESISTANT
Applicable to products with Matte and Textured Finishes



FIRE-RESISTANT



SIMPLICLEAN™

VISIT AMERICANOLEAN.COM/WHYTILE FOR A COMPLETE LIST OF QUALIFICATIONS AND EXCLUSIONS.

FINISHES: GLOSSY | MATTE

USAGE



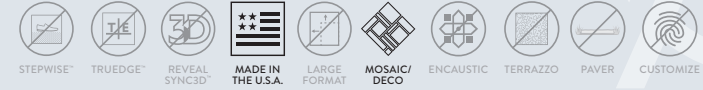
MATERIAL



PRICING



SPECIAL FEATURES



NOT APPLICABLE FOR ALL PRODUCTS IN THIS SERIES. SEE CHARTS FOR FULL PRODUCT DETAILS.

SIZES

			THICKNESS	FINISH	MADE IN U.S.A.
	4 x 12 Wall Tile	19-3/4" x 19-3/4" (50.20 cm x 50.20 cm)	5/16"	G	
	4 x 4 Wall Tile	11-13/16" x 23-13/16" (30.00 cm x 60.48 cm)	5/16"	G	
	2 x 5 Picket Mosaic Tile (Dot-mounted)	12-1/4" X 11-1/8" Sheet (31.11 cm X 28.25 cm Sheet)	1/4"	G	
	1.5" Hex Mosaic Tile (Dot-mounted)	11-3/8" x 10-1/4" Sheet (28.89 cm x 26.04 cm Sheet)	1/4"	M	

G Glossy Finish M Matte Finish

APPLICATIONS

	TARGET DCOF WET	SUITABLE
Dry & Level – Interior Floor	N/A	●*
Wet & Level – Interior Floor	≥ 0.42	●*
Shower Floors - Standard Center Drain	≥ 0.42	●*
Shower Floors - Linear Drain	≥ 0.42 (Mosaic) ≥ 0.60 (Floor)	●*
Exterior Floor Applications (including patios, pool decking & other wet areas with minimal footwear)	≥ 0.60	
Ramps & Inclines	≥ 0.65	
Walls/Backsplashes	N/A	●
Countertops	N/A	●*
Pool Linings	N/A	●**

A DCOF value of ≥ 0.42 is the standard for tiles specified for level interior spaces expected to be walked upon when wet, as stated in ANSI A137.1-A326.3. For more information about DCOF and the DCOF AcuTest™, visit americanolean.com/DCOF.

APPLICATION NOTES:

Wall and mosaic tile suitable for exterior applications (provided it is noted as suitable in the applications chart above) in non-freezing climates, when proper installation methods are followed.

* Matte hexagon mosaic tile only.

** Mosaic and 4 x 4 tiles only.

FEATURES



POST-CONSUMER RECYCLED MATERIALS



PRE-CONSUMER RECYCLED MATERIALS



REVEAL IMAGING®



ZEROTOX

All or select items within this series meet the requirements for these qualifications. For more information visit americanolean.com.

WALL

TRIM

			NUMBER	FINISH
	Jolly	1/2 x 12	SI/212J	G

G Glossy Finish

INSTALLATION

Grout Joint Recommendation	Shade Variation
4 x 4 Wall Tile: 1/16"	High* (V3)
4 x 12 Wall Tile: 1/16" (When rectangular size is installed in a staggered brick-joint pattern, overlap should not exceed 33%).	Random (V4)
Mosaic Tile: 1/8"	

* SN70 & SN76 only.

PERFORMANCE CHARACTERISTICS

	ASTM#	WALL RESULT	MOSAIC RESULT	GLOSSY MOSAIC RESULT
Water Absorption	C373	<20.0%	<3.0%	<3.0%
Breaking Strength	C648	120 - 230 lbf	>250 lbf	>250 lbf
Scratch Hardness	C1895	4.0 - 6.0	4.0 - 8.0	4.0 - 6.0
Chemical Resistance	C650	Resistant	Resistant	Resistant

For additional information on test results, visit us at: americanolean.com/information/TestResults.

DURABILITY

Floor Surface Wear Resistance

1	Residential Bathrooms	3*	All Residential / Light Commercial
2	All Residential Areas	4	All Residential / Commercial

*Matte hexagon mosaic tile only.

NOTES

Since there are variations in all fired ceramic and natural products, tile and trim supplied for your particular installation may not match samples. Final confirmation should be made from actual tiles and trim prior to installation. Manufactured in accordance with ANSI A137.1 standards.

To achieve optimal results, all tile should be selected from multiple cartons and shading and graphic arrangement planned prior to installation.

For additional information refer to "Factors to Consider" at: americanolean.com/Factors.

