

STITCHMARK™

COLORBODY™ PORCELAIN FLOOR TILE AND GLAZED CERAMIC MOSAIC TILE

AMERICAN OLEAN®



FABRIC LOOK



AMERICAN OLEAN®

STITCHMARK™

Stitchmark invites you to a tactile experience inspired by rich fabric textures. With a foundation built on a concrete aesthetic, this series is perfect for modern, layered styles that feel both warm and architecturally refined. A curated palette of neutral tones, a coordinating mosaic, and subtly textured surfaces create a strong foundation for cohesive, sophisticated spaces. The durability of Colorbody™ Porcelain balances with sleek, modern styling in Stitchmark, for a dimensional, visually rich, and versatile contemporary series.



Cover photo features Boucle Cream, 24 x 24 on the floor, 12 x 24 on the right wall, 12 x 24 Woven on the shower wall, and 3 x 3 mosaic on the shower floor. Above photo features Cashmere Tan, 24 x 24 on the floor.

FINISHES: MATTE | TEXTURED

USAGE



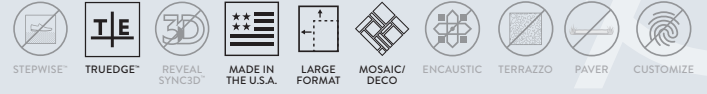
MATERIAL



PRICING



SPECIAL FEATURES



NOT APPLICABLE FOR ALL PRODUCTS IN THIS SERIES. SEE CHARTS FOR FULL PRODUCT DETAILS.

FABRIC LOOK

24 x 24 COLORBODY™ PORCELAIN FLOOR TILE



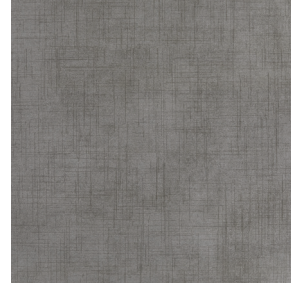
CALICO WHITE S170



BOUCLE CREAM S171



CASHMERE TAN S172

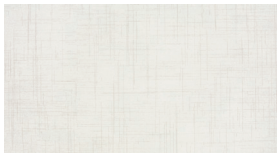


JERSEY GRAY S173

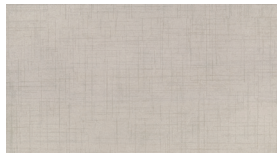


TWEED TAUPE S174

12 x 24 COLORBODY™ PORCELAIN FLOOR TILE



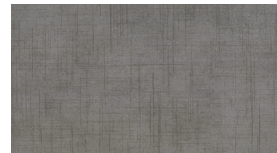
CALICO WHITE S170



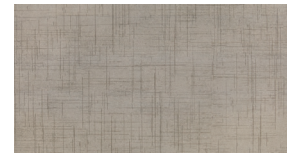
BOUCLE CREAM S171



CASHMERE TAN S172



JERSEY GRAY S173



TWEED TAUPE S174

12 x 24 COLORBODY™ PORCELAIN WOVEN FLOOR TILE



CALICO WHITE S170



BOUCLE CREAM S171



CASHMERE TAN S172



JERSEY GRAY S173



TWEED TAUPE S174

3 x 3 GLAZED CERAMIC MOSAIC TILE



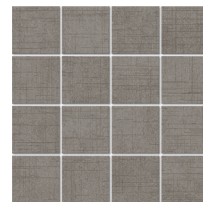
CALICO WHITE S170



BOUCLE CREAM S171



CASHMERE TAN S172



JERSEY GRAY S173



TWEED TAUPE S174



SLIP RESISTANT



WATERPROOF



STAINPROOF



DENTPROOF



SCRATCH-RESISTANT



FIRE-RESISTANT



CLIMATEPRO™



SIMPLECLEAN™

VISIT AMERICANOLEAN.COM/WHYTILE FOR A COMPLETE LIST OF QUALIFICATIONS AND EXCLUSIONS.

STITCHMARK™

COLORBODY™ PORCELAIN FLOOR TILE AND GLAZED CERAMIC MOSAIC TILE

AMERICAN OLEAN®

FINISHES: MATTE | TEXTURED

USAGE



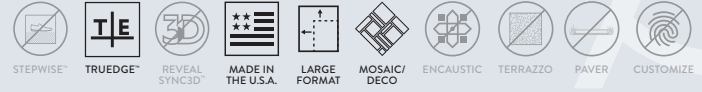
MATERIAL



PRICING



SPECIAL FEATURES



NOT APPLICABLE FOR ALL PRODUCTS IN THIS SERIES. SEE CHARTS FOR FULL PRODUCT DETAILS.

SIZES

			THICKNESS	FINISH	MADE IN U.S.A
	24 x 24 Floor Tile	23-3/8" x 23-3/8" (59.44 cm x 59.44 cm)	5/16"	M	
	12 x 24 Floor Tile	11-5/8" x 23-3/8" (29.56 cm x 59.44 cm)	5/16"	M	
	12 x 24 Woven Floor Tile	11-5/8" x 23-3/8" (29.56 cm x 59.44 cm)	5/16"	T	
	3 x 3 Straight-Joint Mosaic Tile (Dot-mounted)	12" x 12" Sheet (30.48 cm x 30.48 cm Sheet)	1/4"	M	

Made in the U.S.A. designation is subject to change. Please visit daltile.com for the most current manufacturing information.

M Matte Finish T Textured Finish

APPLICATIONS

	TARGET DCOF WET	SUITABLE
Dry & Level – Interior Floor	N/A	●
Wet & Level – Interior Floor	≥ 0.42	●
Shower Floors - Standard Center Drain	≥ 0.42	●*
Shower Floors - Linear Drain	≥ 0.42 (Mosaic) ≥ 0.60 (Floor)	●*
Exterior Floor Applications (including patios, pool decking & other wet areas with minimal footwear)	≥ 0.60	●
Ramps & Inclines	≥ 0.65	●
Walls/Backsplashes	N/A	●
Countertops	N/A	●
Pool Linings	N/A	●*

A DCOF value of ≥ 0.42 is the standard for tiles specified for level interior spaces expected to be walked upon when wet, as stated in ANSI A137.1-A326.3. For more information about DCOF and the DCOF AcuTest™, visit americanolean.com/DCOF.

APPLICATION NOTES:

Floor tile is suitable for exterior applications (provided it is noted as suitable in the applications chart above) in freezing and non-freezing climates, when proper installation methods are followed.

Mosaic tile is suitable for exterior applications (provided it is noted as suitable in the applications chart above) in non-freezing climates, when proper installation methods are followed.

* Mosaic tile only

FEATURES



ZEROTOX

All or select items within this series meet the requirements for these qualifications. For more information visit americanolean.com.

FABRIC LOOK

TRIM

			NUMBER	FINISH
	Bullnose	3 x 24	P43F9	M
	Cove Base	6 x 12	P36C9	M
	Cove Base Outcorner	1 x 6	PC36C9	M

M Matte Finish

Cove base trim is intended to coordinate with floor tile in the standard 90-degree installation position. Cove base and cove corner trim are suitable for non-freezing climates only.

INSTALLATION

Grout Joint Recommendation

Floor Tile: 1/8" (3/16" when multiple sizes are installed in a modular pattern, and/or when installing tile with a length 15" or greater in a staggered brick-joint pattern; overlap should not exceed 33%.)

Mosaic Tile: 1/8"

Shade Variation



PERFORMANCE CHARACTERISTICS

	ASTM#	FLOOR RESULT	MOSAIC RESULT
Water Absorption	C373	< 0.5%	<3.0%
Breaking Strength	C648	≥ 275 lbf	≥ 250 lbf
Scratch Hardness	C1895	8.0	4.0 - 8.0
Chemical Resistance	C650	Resistant	Resistant

For additional information on test results, visit us at: americanolean.com/information/TestResults.

DURABILITY

Floor Surface Wear Resistance

1 Residential Bathrooms	3 All Residential / Light Commercial
2 All Residential Areas	4 All Residential / Commercial

NOTES

Since there are variations in all fired ceramic and natural products, tile and trim supplied for your particular installation may not match samples. Final confirmation should be made from actual tiles and trim prior to installation. Manufactured in accordance with ANSI A137.1 standards.

Not for use on ramps. Water, oil, grease, improper drainage and certain footwear can create slippery conditions. Floor applications expected to be exposed to these conditions require extra caution in product selection.

For additional information refer to "Factors to Consider" at: americanolean.com/Factors.

Water, oil, grease, improper drainage and certain footwear can create slippery conditions. Floor applications expected to be exposed to these conditions require extra caution in product selection.

Special consideration needs to be given when installing tiles greater than 15 inches. Please refer to americanolean.com/LargeTiles for more information.

Special care should be taken when grouting with dark pigmented colors. A grout release is recommended to prevent finely powdered pigments from lodging in the pores of the surface. Use of a latex modified thin-set is recommended for installation.

888.AOT.TILE



AMERICAN OLEAN®

AMERICANOLEAN.COM

©2026 AMERICAN OLEAN (05/26)