

# QUARRY NATURALS™

QUARRY

AMERICAN OLEAN®



QUARRY



AMERICAN OLEAN®  
PROVEN IN TILE™

# QUARRY NATURALS™

Quarry Naturals lets you choose from a group of solid colors or slightly-striated, visually-textured "flash" surfaces, all with a natural, hand-crafted look. Durable and long-wearing, Quarry Naturals' slip-resistant cushioned edge and unglazed surface make it eminently suitable for outdoor patio and pool areas as well as floors and walls.



Cover and above photos feature Quarry Naturals Lava Red 8 x 8 on the floor.

FINISHES: MATTE | TEXTURED

USAGE



MATERIAL



PRICING



SPECIAL FEATURES

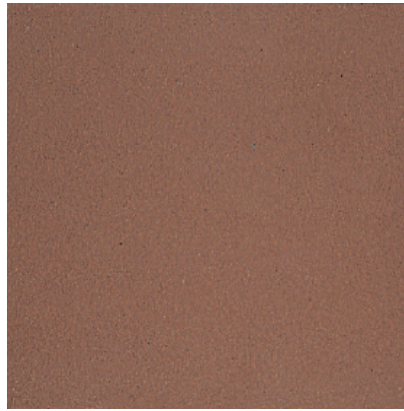


QUARRY

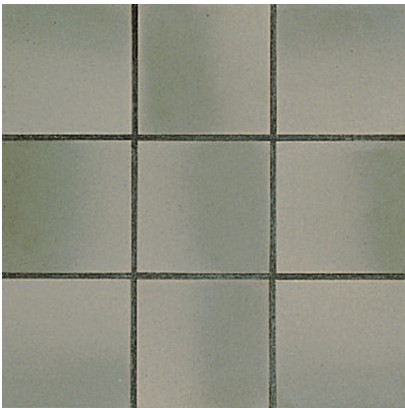
FLOOR TILE



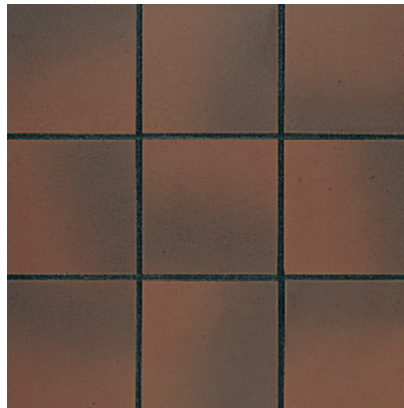
SHADOW GRAY N46 \* (2)



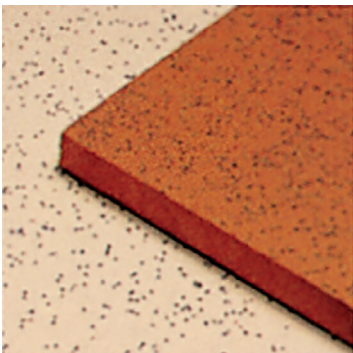
LAVA RED N01 \*(1)



SHADOW FLASH N56 (2)



FIRE FLASH N02 (1)



ABRASIVE GRAIN

\* SPECIAL SURFACES:

Abrasive grain available in N01 and N46 in 6x6 and 8x8 sizes. Abrasive grain particles added to Quarry Naturals give improved slip resistance for many types of footwear, depending on maintenance conditions.

(1) & (2) notations indicate price group, (1) being the least expensive.



VISIT [AMERICANOLEAN.COM/WHYTILE](http://AMERICANOLEAN.COM/WHYTILE) FOR A COMPLETE LIST OF QUALIFICATIONS AND EXCLUSIONS.

FINISHES: MATTE | TEXTURED

### USAGE



### MATERIAL



### PRICING



### SPECIAL FEATURES



## QUARRY

### SIZES

			THICKNESS	SQ. FT./ CARTON	PIECES/ CARTON
	8 x 8 Floor Tile	8 x 8" (20.30 cm x 20.30 cm)	1/2"	11.11	25
	6 x 6 Floor Tile	6" x 6" (15.20 cm x 15.20 cm)	1/2"	11.00	44

### APPLICATIONS

	TARGET DCOF WET	SUITABLE
Dry & Level – Interior Floor	N/A	●
Wet & Level – Interior Floor	≥ 0.42	●
Shower Floors (Residential or Light Commercial)	≥ 0.42	●**
Exterior Floor Applications (including patios, pool decking & other wet areas with minimal footwear)	≥ 0.60	●
Ramps & Inclines	≥ 0.65	●*
Walls/Backsplashes	N/A	●
Countertops	N/A	●
Pool Linings	N/A	●**

A DCOF value of ≥ 0.42 is the standard for tiles specified for level interior spaces expected to be walked upon when wet, as stated in ANSI A137.1-A326.3. For more information about DCOF and the DCOF AcuTest™, visit [americanolean.com/DCOF](http://americanolean.com/DCOF).

#### APPLICATION NOTES:

Suitable for exterior applications in freezing and non-freezing climates, when proper installation methods are followed.

Suitable for industrial installations requiring high compressive strength.

Subject to Oils: Absorbs oils, grease and other liquids to keep floors slip-resistant, yet does not contaminate the surface. Proper cleaning methods easily remove any contaminants that do get absorbed into the tile.

\* Abrasive surface only

\*\* 6 x 6 floor tile only

### DURABILITY

#### Floor Surface Wear Resistance

1 Residential Bathrooms	3 All Residential / Light Commercial
2 All Residential Areas	④ All Residential / Commercial

### FEATURES



PRE-CONSUMER  
RECYCLED MATERIALS



MADE IN THE U.S.A.



**ZEROTOX**  
Healthy Homes | Healthy Planet

All or select items within this series meet the requirements for these qualifications. For more information visit [americanolean.com](http://americanolean.com).

### TRIM

			NUMBER	PIECES/ CARTON
	Floor Bullnose	6 x 6	Q1665U	44
	Floor Bullnose Corner	6 x 6	QCRL1665U	44
	Floor Bullnose	8 x 8	Q1885U	25
	Floor Bullnose Corner	8 x 8	QCRL1885U	25
	Cove Base*	5 x 8	Q3585U	24
	Cove Base*	5 x 6	Q3565U	44
	Cove Base Outcorner Right*	5 x 6	QCR3565U	20
	Cove Base Outcorner Left*	5 x 6	QCL3565U	20
	Cove Base Incorner*	5 x 1	QB3565U	25

Cove base trim is intended to coordinate with floor tile in the standard 90-degree installation position.

\* Not available in Flash colors; use coordinating solid color

### INSTALLATION

Grout Joint Recommendation	Shade Variation
3/8"	<p>HIGH (V3) - non-Flash colors</p> <p>RANDOM (V4) - Flash colors</p>

### PERFORMANCE CHARACTERISTICS

	ASTM#	FLOOR RESULT
Water Absorption	C373	< 3.0%
Breaking Strength	C648	> 350 lbs
Scratch Hardness	MOHS	7.0
Chemical Resistance	C650	Resistant

For additional information on test results, visit us at: [americanolean.com/information/TestResults](http://americanolean.com/information/TestResults).

### NOTES

Strong random shading enhances the natural beauty of this product. To achieve optimal results, tile should be selected from multiple cartons and shading arrangement planned prior to installation.

Since there are variations in all fired ceramic and natural products, tile and trim supplied for your particular installation may not match samples. Final confirmation should be made from actual tiles and trim prior to installation. Manufactured in accordance with ANSI A137.1 standards.

Water, oil, grease, etc. create slippery conditions. Floor applications with exposure to these conditions require extra caution in product selection. Abrasive surface suitable for use on ramps.

For additional information refer to "Factors to Consider" at: [americanolean.com/Factors](http://americanolean.com/Factors).

Special care should be taken when grouting; a grout release is recommended to prevent finely powdered pigments from lodging in the pores of the tile surface.

It is necessary to follow the proper procedures and recommendations for the grout and maintenance products' manufactures.