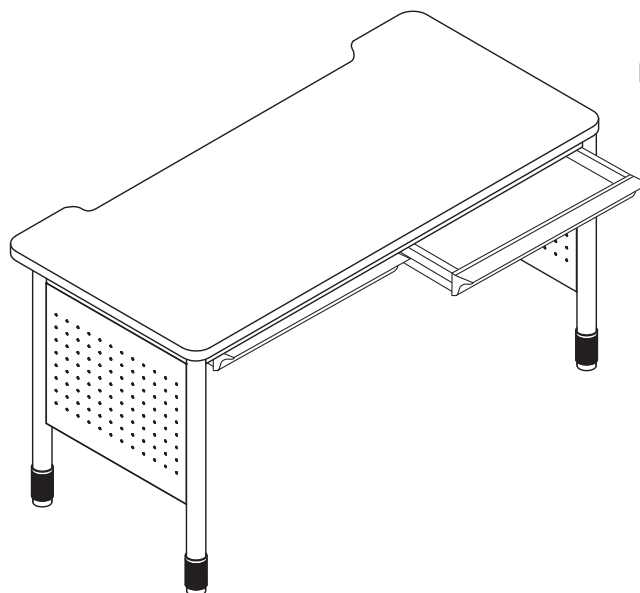
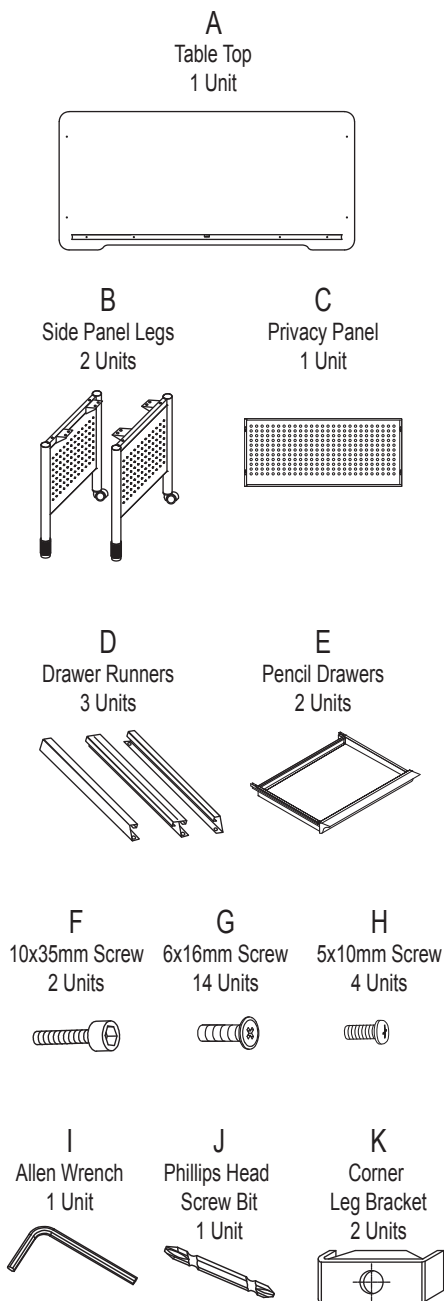


Model 66120 / 66140 / 66150 Mesa Series Training Table with Drawers

Parts Listing

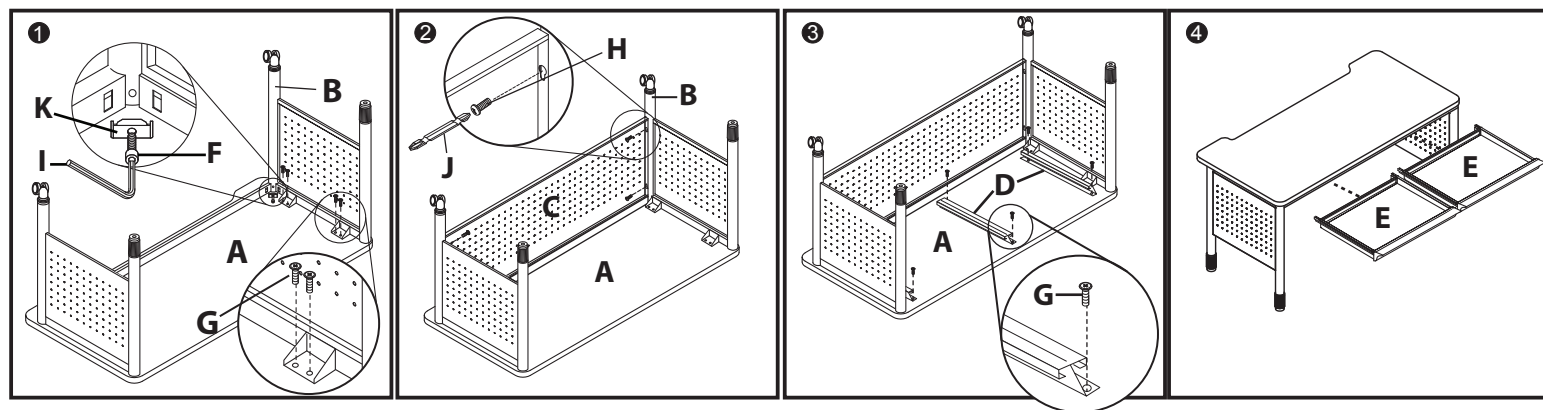


Assembly Instructions



Tools Needed: Phillips Head Screwdriver
Please read all instructions before assembly.
Assembly will require 2 people.

- Step 1:** Align Side Panel Legs (B) with the support rail on the underside of the Table Top (A). Place Corner Leg Bracket (K) in holes on support rail, and insert 10x35mm Screw (F) through bracket and into legs. Tighten using Allen Wrench (I). Align holes on Side Panel Leg (B) bracket with holes on the underside of the Table Top (A). Insert 6x16mm Screws (G) through bracket and into top, and secure using Phillips Head Screw Bit (J).
- Step 2:** Attach Privacy Panel (C) to Side Panel Legs (B) by inserting 5x10mm Screws (H) through sides of Privacy Panel (C) and into side of Side Panel Legs (B).
- Step 3:** Attach Drawer Runners (D) to underside of Table Top (A), as shown. Make sure double-sided runner is placed in the middle with screw holes on the right side, as shown. Secure with 6x16mm Screws (G) and tighten using Phillips Head Screw Bit (J).
- Step 4:** Flip the desk right side up using at least two people. Insert the Pencil Drawers (E) backwards, as shown, aligning them with the Drawer Runners (D). Push Pencil Drawers (E) all the way in to secure.



Assembly Notes:

During assembly, hand tighten screws only. When all screws are in place, you may then tighten all screws completely.

CAUTION:

1. Do not use this table as a step ladder.
2. Check for loose screws and tighten them every 6 months.

ofm
Furniture For The Real Office™

161 Tradition Trail Holly Springs, NC, 27540
800-520-7471 (voice) 919-362-4765 (fax)
919-303-6389 (voice) www.ofminc.com
support@ofminc.com