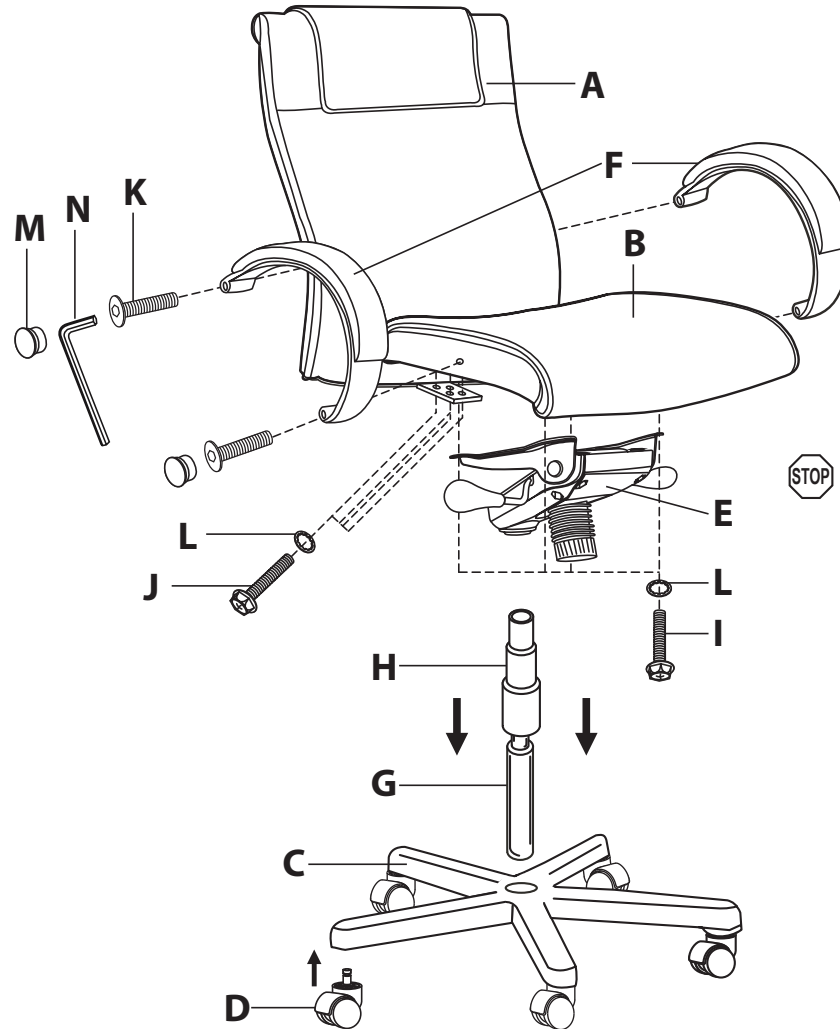
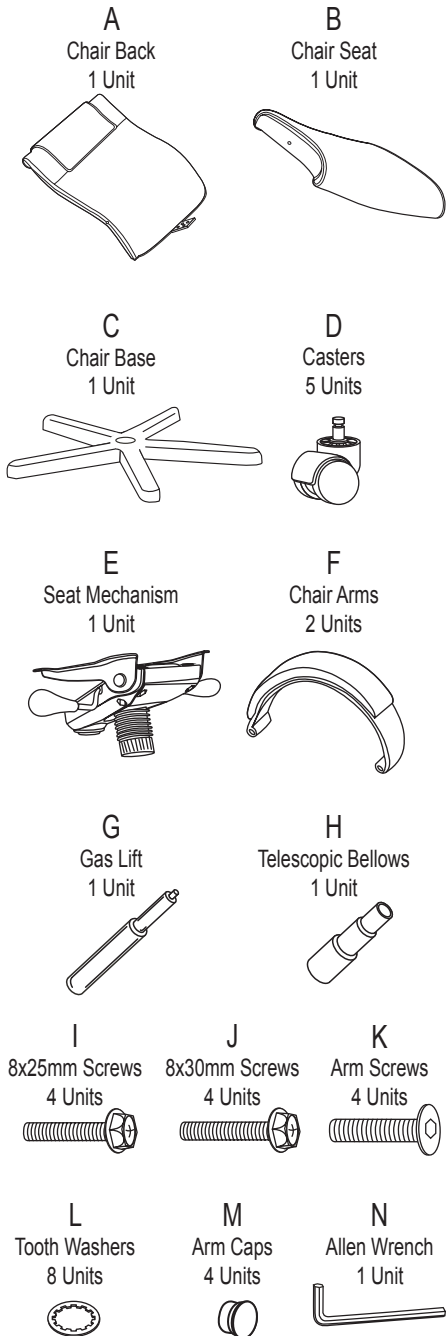


Model 560-L / 561-L Executive Leather Chair

Parts Listing



WEIGHT CAPACITY: 250 lbs.

Assembly Notes:

During assembly, hand tighten screw only when all screws are in place, you may then tighten all screws completely.

CAUTION:

1. Do not use this chair as a step ladder.
2. Check for loose screws and tighten them every 6 months.

Assembly Instructions



Tools Needed: Phillips Head Screwdriver
Please read all instructions before assembly.

- Step 1:** Insert Casters (D) into Chair Base (C). Insert Gas Lift (G) into Chair Base (C) and cover with Telescopic Bellows (H).
- Step 2:** Attach Seat Mechanism (E) to the Chair Seat (B) with 8x25mm Screws (I) and Washers (L), using a screwdriver.
- Step 3:** Attach mounting plate on Chair Back (A) to Chair Seat (B) with 8x30mm Screws (J) and Washers (L), using a screwdriver.
- Step 4:** Attach Chair Arms (F) to Chair Back (A) and Chair Seat (B) using Arm Screws (K) and Allen Wrench (N). Cover screw holes with Arm Caps (M).
- Step 5:** Take entire chair frame and place Seat Mechanism (E) onto Gas Lift (G), and press down firmly to secure.
- Step 6:** Carefully sit on Chair Seat (B) to ensure that the chair is secure and working properly.

ofm
Furniture For The Real Office™

161 Tradition Trail Holly Springs, NC, 27540
800-520-7471 (voice) 919-362-4765 (fax)
919-303-6389 (voice) www.ofminc.com
support@ofminc.com