

Multi-Use Stack Chairs



310-F
Multi-Use Stack Chair
with Fabric Seat & Back



310-FA
Multi-Use Stack Chair
with Fabric Seat & Back with Arms



310-P
Multi-Use Stack Chair
with Plastic Seat & Back



310-PA
Multi-Use Stack Chair
with Plastic Seat & Back with Arms



310-VAM
Multi-Use Stack Chair
with Anti-Microbial/Anti-Bacterial
Vinyl Seat & Back



310-VAM-A
Multi-Use Stack Chair
with Anti-Microbial/Anti-Bacterial
Vinyl Seat & Back with Arms

310 Multi-Use Stack Chair

- Sled base
- Chrome-plated 16-gauge tubular steel frame
- Built-in ganging brackets
- Arms included with Models 310-FA, 310-PA and 310-VAM-A only; models with arms do not stack
- Optional tablet available—specify right or left-handed
- 250 lbs. weight capacity
- See following page for dimensions

Models 310-F & 310-FA:

- Stacks 16-20 high on optional dolly (w/o arms)
- Stacks 6-8 high without dolly (w/o arms)
- Covered with stain-resistant fabrics

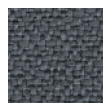
Models 310-P & 310-PA:

- Stacks 20 high on optional dolly (w/o arms)
- Stacks 12 high without dolly (w/o arms)

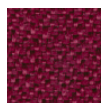
Models 310-VAM & 310-VAM-A:

- Stacks 16 high on optional dolly (w/o arms)
- Stacks 12 high without dolly (w/o arms)
- Covered with anti-microbial/anti-bacterial vinyls (VAM)

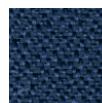
Fabric Colors



801-Gray



803-Wine



804-Navy



805-Black

Plastic Colors



A01-Gray



A02-Black



A10-Wine

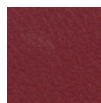


A11-Navy

Vinyl Colors



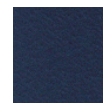
602-Teal



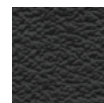
603-Wine



604-Charcoal



605-Navy



606-Black



310-TABLET



310-DOLLY

Multi-Use Stack Chairs



310 Series

Seat Size: 18.50" W x 17.50" D
 Back Size: 18.75" W x 16" H
 Seat Height: 18.25 (310-P, 310-PA) or
 18.75" (310-F, 310-FA, 310-VAM, 310-VAM-A)
 Arm Height: 27.25"
 Int. Arm Width: 19.50"
 Ext. Arm Width: 23.75"
 Overall Height: 33.25"
 Overall Width: 21.50" (w/o arms) or 23.75" (w/ arms)
 Overall Depth: 23"

