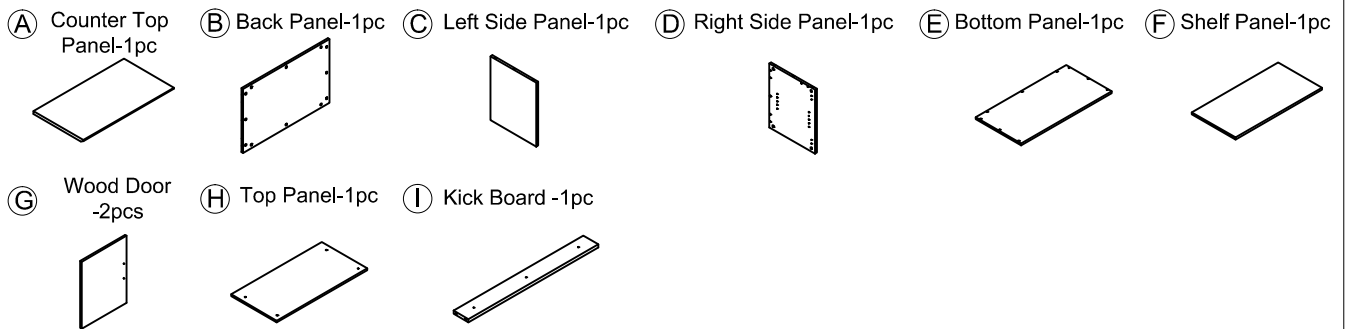
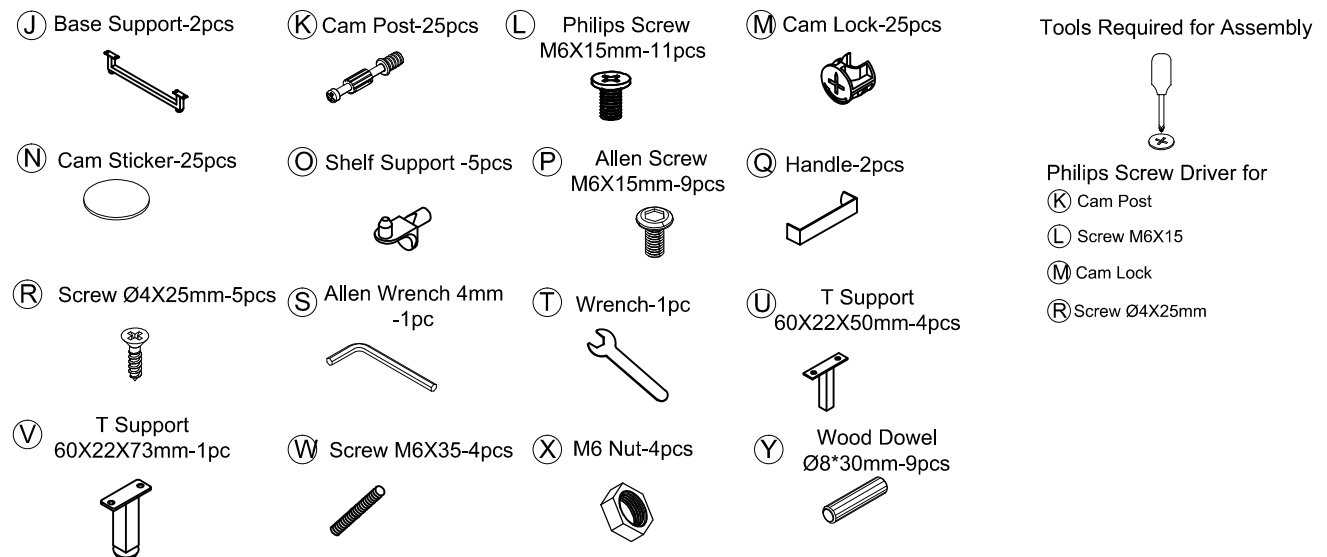


COMPONENTS

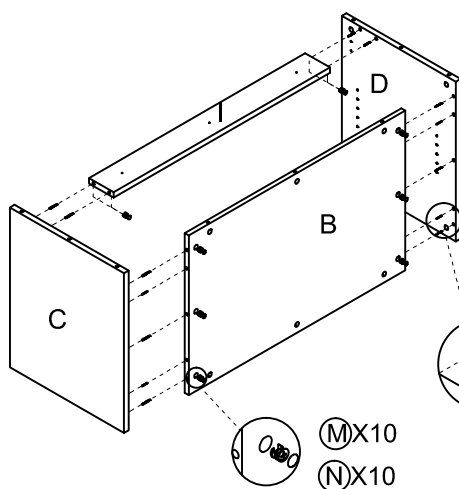


HARDWARE & TOOLS

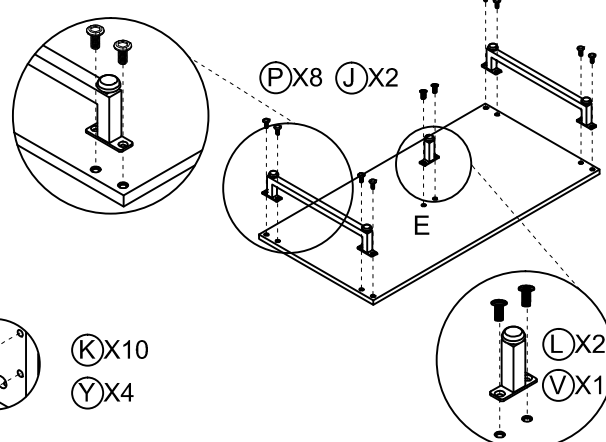


INSTRUCTIONS - Do not use power tools to assemble

STEP 1

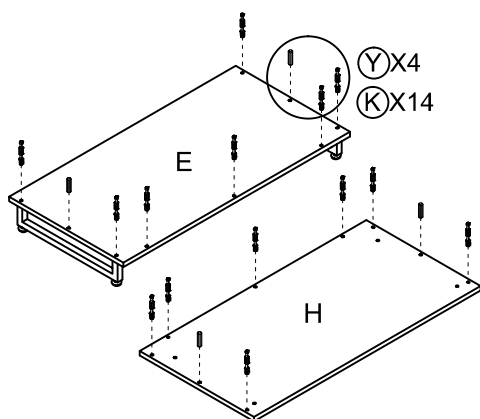


STEP 2

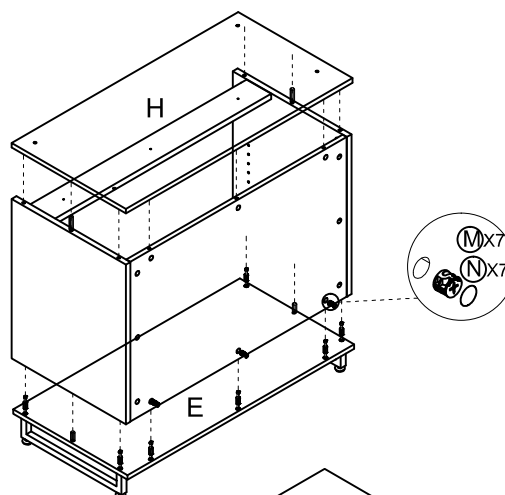


INSTRUCTIONS

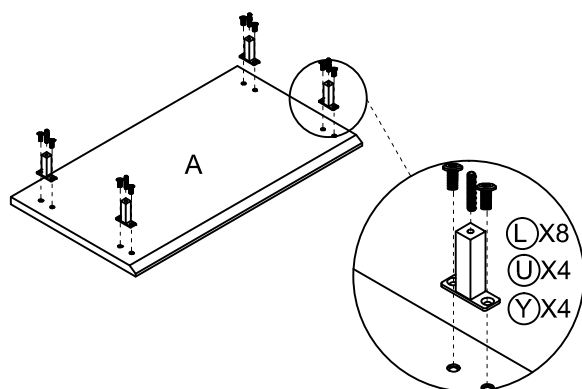
STEP 3



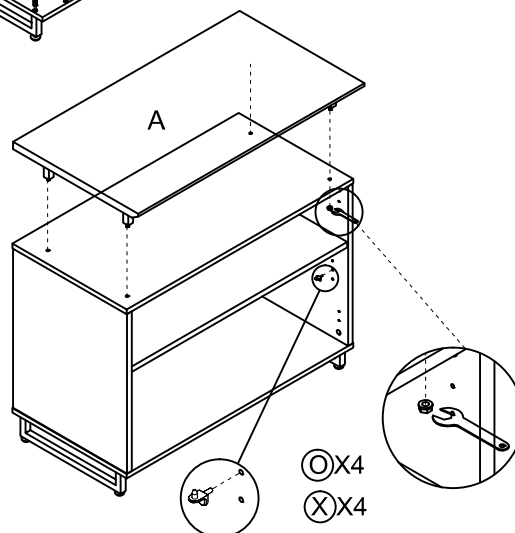
STEP 4



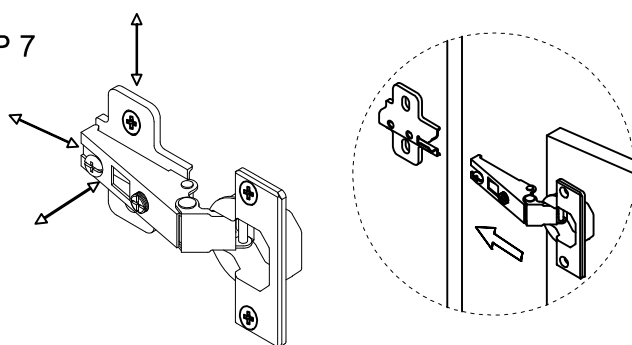
STEP 5



STEP 6



STEP 7



Note:
Adjust door alignment as necessary
by using the adjustment screws on
the hinges.

