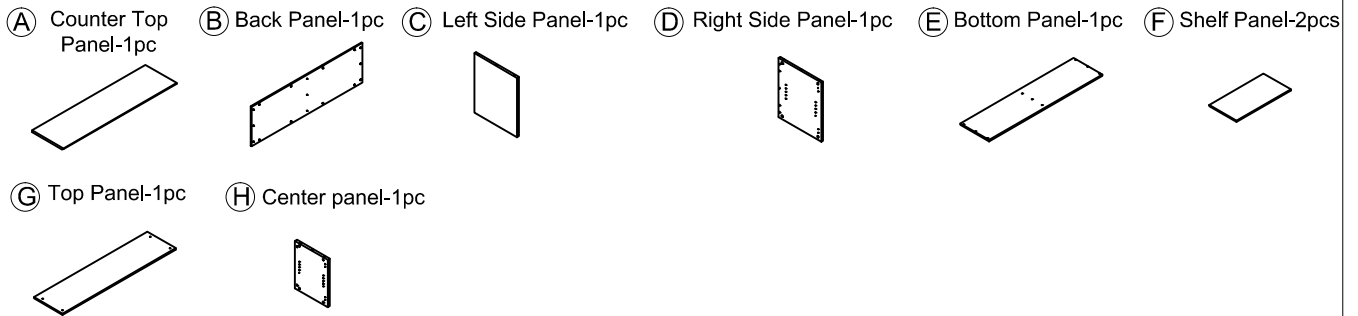
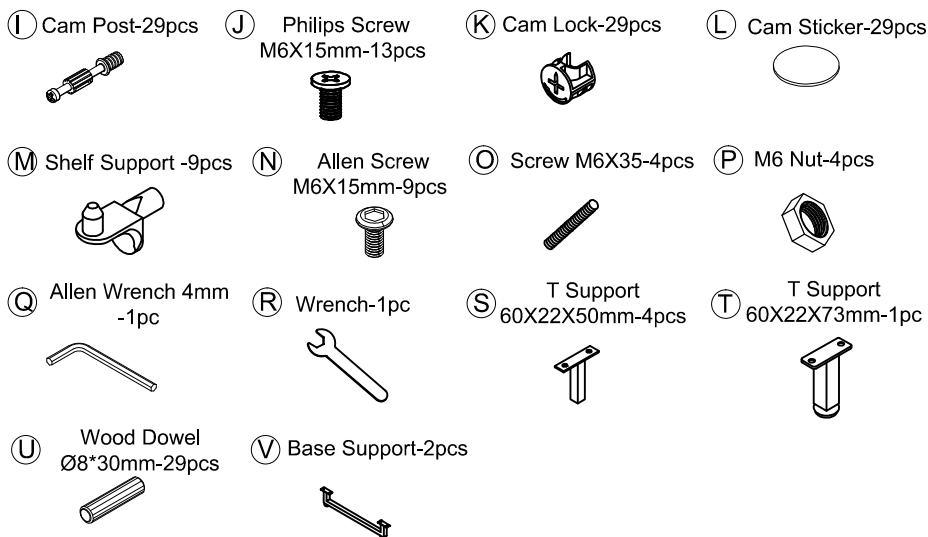


Low Wall Cabinet ASSEMBLY INSTRUCTIONS

COMPONENTS



HARDWARE & TOOLS



Tools Required for Assembly

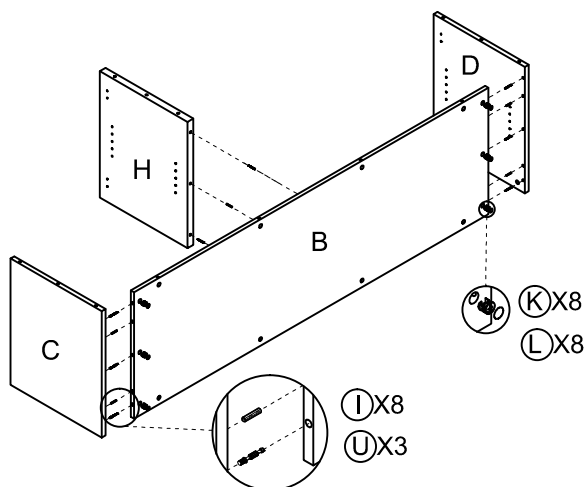


Philips Screw Driver for

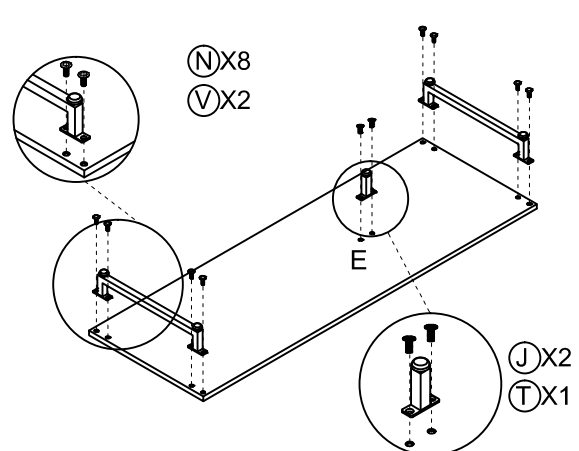
- (I) Cam Post
- (K) Cam Lock
- (J) Screw M6X15mm

INSTRUCTIONS - Do not use power tools to assemble

STEP 1

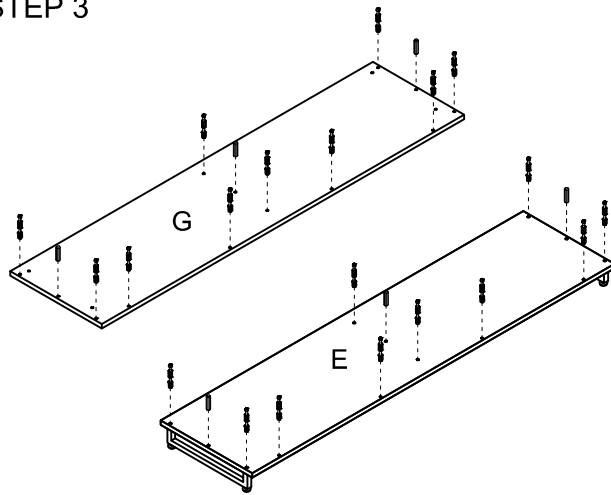


STEP 2

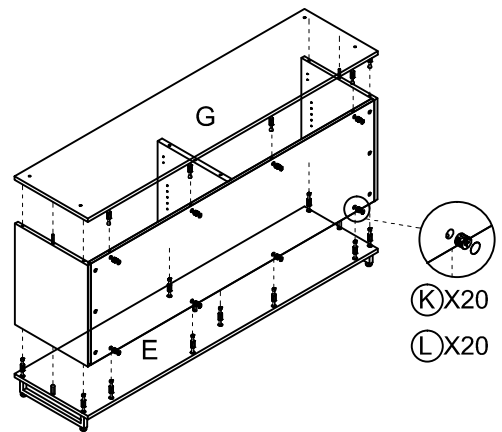


INSTRUCTIONS

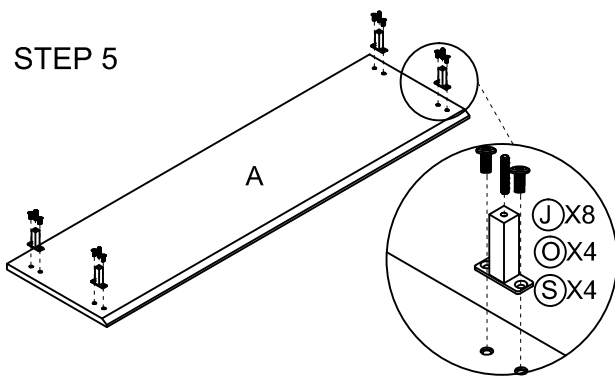
STEP 3



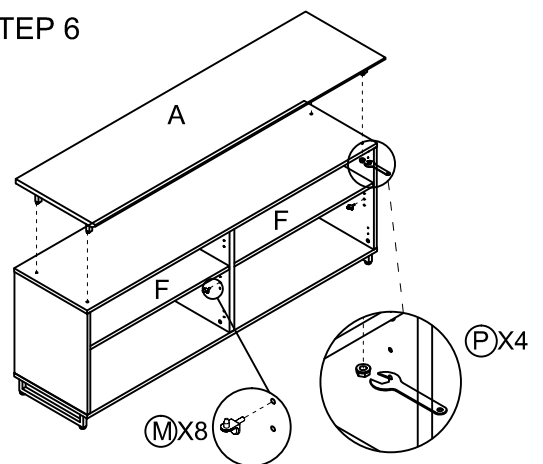
STEP 4



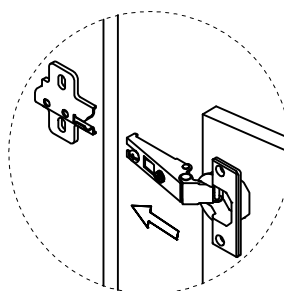
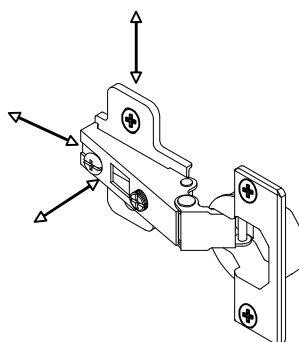
STEP 5



STEP 6



STEP 7



Note:
Adjust door alignment as necessary
by using the adjustment screws on the
hinges.

INSTRUCTIONS

You can install 4 wood, 4 glass or 2 wood and 2 glass doors on any side you choose.

